

Product datasheet for **RC224414**

C20orf30 (TMEM230) (NM_001009925) Human Tagged ORF Clone

Product data:

Product Type: Expression Plasmids
Product Name: C20orf30 (TMEM230) (NM_001009925) Human Tagged ORF Clone
Tag: Myc-DDK
Symbol: C20orf30
Synonyms: C20orf30; dj1116H23.2.1; HSPC274
Mammalian Cell Selection: Neomycin
Vector: pCMV6-Entry (PS100001)
E. coli Selection: Kanamycin (25 ug/mL)
ORF Nucleotide Sequence: >RC224414 ORF sequence
Red=Cloning site Blue=ORF Green=Tags(s)

TTTTGTAATACGACTCACTATAGGGCGGCCGGAATTCGTCGACTGGATCCGGTACCGAGGAGATCTGCC
GCC**CGATCGCC**

ATGATGCCGTCCCGTACCAACCTGGCTACTGGAATCCCCAGTAGTAAAGTGAAATATTCAAGGCTCTCCA
GCACAGACGATGGCTACATTGACCTTCAGTTTAAGAAAACCCCTCCTAAGATCCCTTATAAGGCCATCGC
ACTTGCCACTGTGCTGTTTTGATTGGCGCCTTCTCATTATTATAGGCTCCCTCCTGCTGTCAGGCTAC
ATCAGCAAAGGGGGGCGAGACCGGGCCGTTCCAGTGTGATCATTGGCATTCTGGTGTCTCCTACCCGGAT
TTTACCACCTGCGCATCGCTTACTATGCATCAAAGGCTACCGTGCTTACTCCTATGATGACATTCCAGA
CTTTGATGAC

ACGCGTACGCGGCCGCTCGAGCAGAAACTCATCTCAGAAGAGGATCTGGCAGCAAATGATATCCTGGATT
ACAAGGATGACGACGATAAGGTTTAA

Protein Sequence: >RC224414 protein sequence
Red=Cloning site Green=Tags(s)
MMPSTRNLATGIPSSKVYKYSRLSSTDDGYIDLQFKKTPPKIPYKAIALATVLFLLIGAFLLIIIGSLLLSGY
ISKGGADRAVPVLIIGILVFLPGFYHLRIAYYASKGYRAYSYDDIPDFDD

TRTRPLEQKLISEEDLAANDILDYKDDDDKV

Chromatograms: https://cdn.origene.com/chromatograms/mk6305_f08.zip

Restriction Sites: SgfI-MluI



[View online »](#)

Cloning Scheme:


ACCN: NM_001009925

ORF Size: 360 bp

OTI Disclaimer: Due to the inherent nature of this plasmid, standard methods to replicate additional amounts of DNA in E. coli are highly likely to result in mutations and/or rearrangements. Therefore, OriGene does not guarantee the capability to replicate this plasmid DNA. Additional amounts of DNA can be purchased from OriGene with batch-specific, full-sequence verification at a reduced cost. Please contact our customer care team at custsupport@origene.com or by calling 301.340.3188 option 3 for pricing and delivery.

The molecular sequence of this clone aligns with the gene accession number as a point of reference only. However, individual transcript sequences of the same gene can differ through naturally occurring variations (e.g. polymorphisms), each with its own valid existence. This clone is substantially in agreement with the reference, but a complete review of all prevailing variants is recommended prior to use. [More info](#)

OTI Annotation: This clone was engineered to express the complete ORF with an expression tag. Expression varies depending on the nature of the gene.

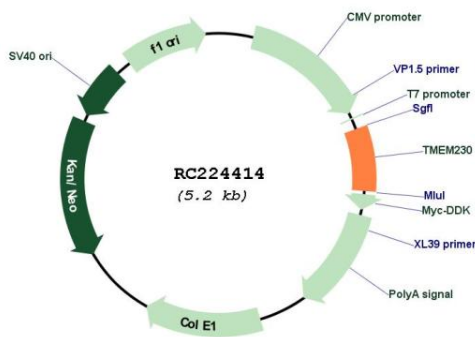
Components: The ORF clone is ion-exchange column purified and shipped in a 2D barcoded Matrix tube containing 10ug of transfection-ready, dried plasmid DNA (reconstitute with 100 ul of water).

- Reconstitution Method:**
1. Centrifuge at 5,000xg for 5min.
 2. Carefully open the tube and add 100ul of sterile water to dissolve the DNA.
 3. Close the tube and incubate for 10 minutes at room temperature.
 4. Briefly vortex the tube and then do a quick spin (less than 5000xg) to concentrate the liquid at the bottom.
 5. Store the suspended plasmid at -20°C. The DNA is stable for at least one year from date of shipping when stored at -20°C.

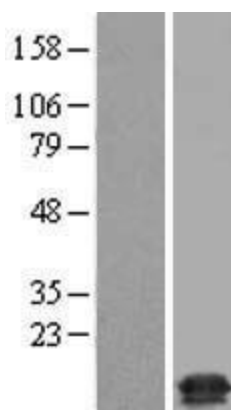
RefSeq: [NM_001009925.1](#), [NP_001009925.1](#)
RefSeq Size: 1468 bp
RefSeq ORF: 363 bp
Locus ID: 29058
UniProt ID: [Q96A57](#)
Cytogenetics: 20p13-p12.3
Protein Families: Transmembrane
MW: 13.2 kDa
Gene Summary:

This gene encodes a multi-pass transmembrane protein that belongs to the TMEM134/TMEM230 protein family. The encoded protein localizes to secretory and recycling vesicle in the neuron and may be involved in synaptic vesicles trafficking and recycling. Mutations in this gene may be linked to familial Parkinson's disease. [provided by RefSeq, Mar 2017]

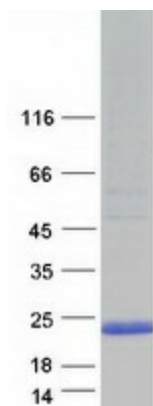
Product images:



Circular map for RC224414



Western blot validation of overexpression lysate (Cat# [LY423153]) using anti-DDK antibody (Cat# [TA50011-100]). Left: Cell lysates from untransfected HEK293T cells; Right: Cell lysates from HEK293T cells transfected with RC224414 using transfection reagent MegaTran 2.0 (Cat# [TT210002]).



Coomassie blue staining of purified TMEM230 protein (Cat# [TP324414]). The protein was produced from HEK293T cells transfected with TMEM230 cDNA clone (Cat# RC224414) using MegaTran 2.0 (Cat# [TT210002]).