

## Product datasheet for **RC224412**

### **BLOC1S1 (NM\_001487) Human Tagged ORF Clone**

#### Product data:

**Product Type:** Expression Plasmids  
**Product Name:** BLOC1S1 (NM\_001487) Human Tagged ORF Clone  
**Tag:** Myc-DDK  
**Symbol:** BLOC1S1  
**Synonyms:** BLOS1; BORCS1; GCN5L1; MICoA; RT14  
**Mammalian Cell Selection:** Neomycin  
**Vector:** pCMV6-Entry (PS100001)  
**E. coli Selection:** Kanamycin (25 ug/mL)  
**ORF Nucleotide Sequence:** >RC224412 ORF sequence  
**Red=Cloning site Blue=ORF Green=Tags(s)**

TTTTGTAATACGACTCACTATAGGGCGGCCGGAATTCGTCGACTGGATCCGGTACCGAGGAGATCTGCC  
GCC**CGATCGCC**

ATGCTGTCCCGCCTCTAAAAGAACCAGGCCAAGCAGAATGAACGCAAGGAGCTGCAGGAAAAGAGGA  
GGCGAGAGGCTATCACTGCAGCGACCTGCCTGACAGAAGCTTTGGTGGATCACCTCAATGTGGGTGTGGC  
CCAGGCCATACATGAACCAGAGAAAGCTGGACCATGAGGTGAAGACCCTACAGGTCCAGGCTGCCAATTT  
GCCAAGCAGACAGGCCAGTGGATCGGAATGGTGGAGAATTCAACCAGGCACTCAAGGAAATTGGGGATG  
TGGAGAACTGGGCTCGGAGCATCGAGCTGGACATGCGCACCATTGCCACTGCACTGGAATATGTCTACAA  
AGGGCAGCTGCAGTCTGCCCTTCC

**ACGCGT**ACGCGGCCGCTCGAGCAGAACTCATCTCAGAAGAGGATCTGGCAGCAAATGATATCCTGGATT  
ACAAGGATGACGACGATAAGGTTTAA

**Protein Sequence:** >RC224412 protein sequence  
**Red=Cloning site Green=Tags(s)**  
MLSRLLEKHQAKQNERKELQEKRRREAITAATCLTEALVDHLNVGVAQAYMNQRKLDHEVKTLQVQAAQF  
AKQTGWQWIGMVENFNQALKEIGDVENWARSIELDMRTIATALEYVYKGLQSAPS

**TRTRPLEQKLISEEDLAANDILDYKDDDDKV**

**Chromatograms:** [https://cdn.origene.com/chromatograms/mk6469\\_e08.zip](https://cdn.origene.com/chromatograms/mk6469_e08.zip)

**Restriction Sites:** SgfI-MluI

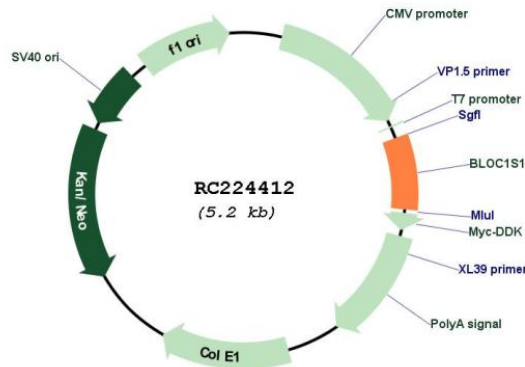


[View online »](#)

**Cloning Scheme:**



**Plasmid Map:**



**ACCN:** NM\_001487

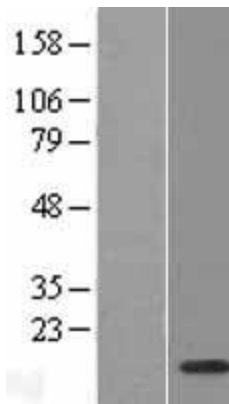
**ORF Size:** 375 bp

**OTI Disclaimer:** The molecular sequence of this clone aligns with the gene accession number as a point of reference only. However, individual transcript sequences of the same gene can differ through naturally occurring variations (e.g. polymorphisms), each with its own valid existence. This clone is substantially in agreement with the reference, but a complete review of all prevailing variants is recommended prior to use. [More info](#)

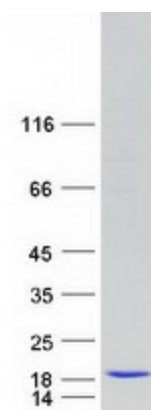
**OTI Annotation:** This clone was engineered to express the complete ORF with an expression tag. Expression varies depending on the nature of the gene.

<b>Components:</b>	The ORF clone is ion-exchange column purified and shipped in a 2D barcoded Matrix tube containing 10ug of transfection-ready, dried plasmid DNA (reconstitute with 100 ul of water).
<b>Reconstitution Method:</b>	<ol style="list-style-type: none"><li>1. Centrifuge at 5,000xg for 5min.</li><li>2. Carefully open the tube and add 100ul of sterile water to dissolve the DNA.</li><li>3. Close the tube and incubate for 10 minutes at room temperature.</li><li>4. Briefly vortex the tube and then do a quick spin (less than 5000xg) to concentrate the liquid at the bottom.</li><li>5. Store the suspended plasmid at -20°C. The DNA is stable for at least one year from date of shipping when stored at -20°C.</li></ol>
<b>RefSeq:</b>	<a href="#">NM_001487.2</a>
<b>RefSeq Size:</b>	590 bp
<b>RefSeq ORF:</b>	462 bp
<b>Locus ID:</b>	2647
<b>UniProt ID:</b>	<a href="#">P78537</a>
<b>Cytogenetics:</b>	12q13.2
<b>MW:</b>	14.3 kDa
<b>Gene Summary:</b>	BLOC1S1 is a component of the ubiquitously expressed BLOC1 multisubunit protein complex. BLOC1 is required for normal biogenesis of specialized organelles of the endosomal-lysosomal system, such as melanosomes and platelet dense granules (Starcevic and Dell'Angelica, 2004 [PubMed 15102850]).[supplied by OMIM, Mar 2008]

### Product images:



Western blot validation of overexpression lysate (Cat# [LY419897]) using anti-DDK antibody (Cat# [TA50011-100]). Left: Cell lysates from untransfected HEK293T cells; Right: Cell lysates from HEK293T cells transfected with RC224412 using transfection reagent MegaTran 2.0 (Cat# [TT210002]).



Coomassie blue staining of purified BLOC1S1 protein (Cat# [TP324412]). The protein was produced from HEK293T cells transfected with BLOC1S1 cDNA clone (Cat# RC224412) using MegaTran 2.0 (Cat# [TT210002]).