

## Product datasheet for **RC224409**

### **GK5 (NM\_001039547) Human Tagged ORF Clone**

#### **Product data:**

Product Type:	Expression Plasmids
Product Name:	GK5 (NM_001039547) Human Tagged ORF Clone
Tag:	Myc-DDK
Symbol:	GK5
Mammalian Cell Selection:	Neomycin
Vector:	pCMV6-Entry (PS100001)
E. coli Selection:	Kanamycin (25 ug/mL)



[View online »](#)

**ORF Nucleotide Sequence:**

>RC224409 representing NM\_001039547  
 Red=Cloning site Blue=ORF Green=Tags(s)

TTTTGTAATACGACTCACTATAGGGCGGCCGGAATTCGTCGACTGGATCCGGTACCGAGGAGATCTGCC  
 GCC**CGATCGCC**

ATGTCGGGGCTGCTCACGGACCCGAGCAGAGAGCGCAGGAGCCGCGGTACCCCGCTTCGTGCTGGGGC  
 TGGATGTGGGCAGTTCTGTGATCCGCTGCCACGTCTATGACCGGGCGGCCGCGGTCTGCGCTCCAGCGT  
 GCAGAAGGTAGAAAATCTTTATCCTCAAATTTGGCTGGGTAGAAATTGATCCTGATGTTCTTTGGATTCAA  
 TTTGTTGCCGTAATAAAGAAGCAGTCAAAGCTGCAGGAATACAGATGAATCAAATTGTTGGTCTTGGCA  
 TTTCAACACAGAGAGCAACTTTTATTACGTGGAACAAGAAAACAGGAAATCATTTTCACAACCTTTATAAG  
 TTGGCAAGACTTAAGAGCTGTTGAACTTGTAAATCTTGAATAATTCTCTTCTTATGAAGATATTTAC  
 AGTTCTTGCCGAGTGCTCACTTTTTCACTAGAAGTAAACGACTTTTTACAGCCAGTTTGTTCACCTTTCA  
 CAACCCAGCAGACTTCTTTGAGATTGGTCTGGATTTTACAGAACTGACTGAGGTGCAAAAGGCAGTTGA  
 AGAAGAAAATTGTGCTTTGGGACTATTGATACCTGGTGTATATAAGCTCACAAAAGGTTCTGTATAT  
 GCCACAGATTTTTCAAATGCTAGTACAACCTGGACTTTTTGACCCATATAAGATGTGTTGGAGTGGGATGA  
 TTACCTCTCTAATTTGATACCACTTTCTCTCCTACCTCCTGTGAGGGACACAAGCCACAATTTGGATC  
 AGTGGATGAAGAGATATTTGGTGTGCCTATACCAATAGTTGCCTTGGTGTGCTGACCAGCAATCAGCCATG  
 TTTGGAGAGTGCTGCTTCCAGACAGGTGATGTGAAATTAACCATGGGAAGTGGGACATTTTGGATTA  
 ACCTGGAATAGCCTTCAACAGACTACTGGAGGCTTTTATCCATTAATTGGGTGGAAGATTGGGCAAGA  
 AGTCGATGCTTAGCTGAAAGCAATGCAGGAGACTGGTACTGCCATAAAATGGGCTCAGCAGTTAGAC  
 CTTTTACAGATGCTGCTGAGACTGAAAAAATGGCCAAAAGTTTGGAGGATTCTGAAGGAGTTTGTGTTG  
 TTCCATCTTTAGTGGATTACAGGCTCCATTAATGACCCCTGGGCATGTGCCTCTTTATGGGTTGAA  
 GCCTTCTACCAAGTAAATACCATCTTGTACGAGCAATATTGGAGTCAATAGCTTTTCAGAAAACAACAGTTA  
 TATGAGATGATGAAGAAAAGATTATCTCTGTAAGAAAAATCCGGGCAGATGGAGGAGTTTGTAAAGA  
 ATGGTTTTGTCATGCAGATGACTTCAGACCTGATTAATGAGAATATAGACAGACCTGCCGACATTGACAT  
 GTCATGCCTGGGTGCAGCTTCTCTAGCTGGCCTTGTGTTGGGTTTTGGACTGACAAGGAGGAACTAAAG  
 AAAGTGAACAAGTGAAGTGGTTTTCAAGCCACAGAAGAAATGTCAAGAATATGAAATGAGTCTGGAAA  
 ACTGGGCCAAAGCAGTGAACGCTCCATGAATTGGTATAACAAGACA

**ACGCGT**ACGCGGCCGCTCGAGCAGAACTCATCTCAGAAGAGGATCTGGCAGCAAATGATATCCTGGATT  
 ACAAGGATGACGACGATAAGGTTTAA

**Protein Sequence:**

>RC224409 representing NM\_001039547  
 Red=Cloning site Green=Tags(s)

MSGLLTDPEQRAQEPYRPGFVLGLDVGSSVIRCHVYDRAARVCGSSVQKVENLYPQIGWVEIDPDVLIQ  
 FVAVIKEAVKAAGIQMNQIVGLISTQRATFITWNKKTGNHFHNFISWQDLRAVELVKSWNNSLLMKIFH  
 SSCRVLHFFTRSKRLFTASLFTFTTQOTSLRLVWILQNLTEVQKAVEEENCCFGTIDTWLLYKLTGKSVY  
 ATDFSNASTTGLFDPYKMCWSGMITSLISIPLSLLPPVRDTSNFGSVDEEIFGVPIPIVALVADQQSAM  
 FGECFFQTGDVCLTMGTGFLDINTGNSLQQTGGFYPLIGWKIQEVVCLAESNAGDTGTAIKWAQQLD  
 LFTDAAETEKMAKSLEDSEGVCVPSFSGLQAPLNDPWACASFMGLKPSTSKYHLVRAILESIAFRNKQL  
 YEMMKKEIHIPVRKIRADGGVCKNGFVMQMTSDLINENIDRPADIDMSCLGAASLAGLAVGFWDKKEELK  
 KLRQSEVVFKPQKCKQEYEMSLNWKAVKRSMNWYNK

**TRTRPLEQKLI**SEEDLAANDILDYKDDDDKV

**Chromatograms:**

[https://cdn.origene.com/chromatograms/mk8043\\_h08.zip](https://cdn.origene.com/chromatograms/mk8043_h08.zip)

**Restriction Sites:**

Sgfl-Mlul

**Cloning Scheme:**


**ACCN:** NM\_001039547

**ORF Size:** 1587 bp

**OTI Disclaimer:** The molecular sequence of this clone aligns with the gene accession number as a point of reference only. However, individual transcript sequences of the same gene can differ through naturally occurring variations (e.g. polymorphisms), each with its own valid existence. This clone is substantially in agreement with the reference, but a complete review of all prevailing variants is recommended prior to use. [More info](#)

**OTI Annotation:** This clone was engineered to express the complete ORF with an expression tag. Expression varies depending on the nature of the gene.

**Components:** The ORF clone is ion-exchange column purified and shipped in a 2D barcoded Matrix tube containing 10ug of transfection-ready, dried plasmid DNA (reconstitute with 100 ul of water).

- Reconstitution Method:**
1. Centrifuge at 5,000xg for 5min.
  2. Carefully open the tube and add 100ul of sterile water to dissolve the DNA.
  3. Close the tube and incubate for 10 minutes at room temperature.
  4. Briefly vortex the tube and then do a quick spin (less than 5000xg) to concentrate the liquid at the bottom.
  5. Store the suspended plasmid at -20°C. The DNA is stable for at least one year from date of shipping when stored at -20°C.

**RefSeq:** [NM\\_001039547.3](#)

**RefSeq Size:** 9834 bp

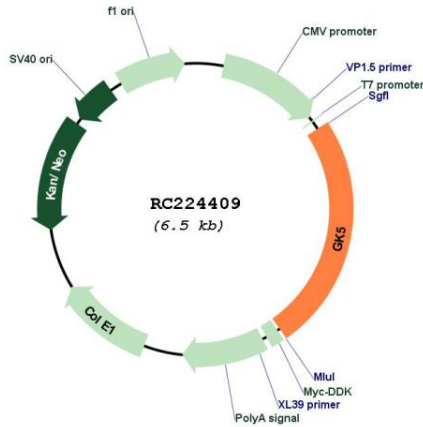
**RefSeq ORF:** 1590 bp

**Locus ID:** 256356

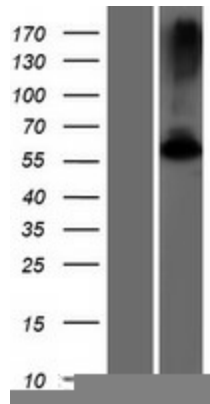
**UniProt ID:** [Q6ZS86](#)

**Cytogenetics:** 3q23  
**Protein Families:** Druggable Genome  
**MW:** 59 kDa

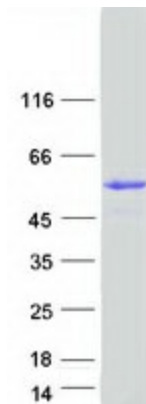
**Product images:**



Circular map for RC224409



Western blot validation of overexpression lysate (Cat# [LY422068]) using anti-DDK antibody (Cat# [TA50011-100]). Left: Cell lysates from untransfected HEK293T cells; Right: Cell lysates from HEK293T cells transfected with RC224409 using transfection reagent MegaTran 2.0 (Cat# [TT210002]).



Coomassie blue staining of purified GK5 protein (Cat# [TP324409]). The protein was produced from HEK293T cells transfected with GK5 cDNA clone (Cat# RC224409) using MegaTran 2.0 (Cat# [TT210002]).