

Product datasheet for **RC224405**

ZNF749 (NM_001023561) Human Tagged ORF Clone

Product data:

Product Type:	Expression Plasmids
Product Name:	ZNF749 (NM_001023561) Human Tagged ORF Clone
Tag:	Myc-DDK
Symbol:	ZNF749
Mammalian Cell Selection:	Neomycin
Vector:	pCMV6-Entry (PS100001)
E. coli Selection:	Kanamycin (25 ug/mL)



[View online »](#)

ORF Nucleotide
Sequence:

>RC224405 representing NM_001023561
Red=Cloning site Blue=ORF Green=Tags(s)

TTTTGTAATACGACTCACTATAGGGCGGCCGGGAATTCGTGACTGGATCCGGTACCGAGGAGATCTGCC
GCC**CGCATCGCC**

ATGAACCTGACCGAGGATTGTATGGTCTTTGAGGATGTGGCCATATATTTCTCCCAAGAGGAATGGGGGA
TCCTTAATGATGCTCAGAGACACCTGCACAGCAATGTGATGTTGGAGAACTTGCGCTTTTGTTCATCAGT
AGGTTGTTGGCATGGAGCCAAGGATGAGGAGGTACCTTCCAAGCAGTGTGTTTCTGTAAGAGTGTACAG
GTCACAATTCCAAAGCCAGCTTTGTCCACCCTGAAGGCCAGCCCTGCAAGATGTGTAGCTCAATTCTGA
AGGACATTCTGCACCTGGCTGAGCACGATGGAACACACCCTGAGCAAGGGCTGTACACATGTGCAGCAGA
GCATGACCTGCACAAAAGGAGCAGATTAGAGAGAAGCTCACCAGAAGTGTAGTGGAGGCCTTCATTT
GTGAACCACAGTCTCACGTGGGAGAGAGGAACCTCACATGCACGCAGGGTGGCAAGGATTTTACTGCCA
GCTCAGACCTTCCAGCAACAGGTCTTAAACAGTGGGTGGAAGCTGTACAGGGATACCCAGGATGGGGA
AGCCTTTCAAGGTGAACAGAATGATTTCAACTCCAGCCAAGGTGGGAAAGACTTTTGCCACCAACATGGG
CTGTTTGAACACAAAACCCATAATGGGGAGAGGCCTTATGAGTTCAGTGAATGTGGGAAATGTTTA
GGTACAACCTCAACCTTATTAATATCAGCAAAATCATGCTGGAGAAAAGGCCTTATGAGGGCACTGAATA
TGGAAAGACCTTTATTAGAAAAGTCCAACCTAGTTCAGCACCAGAAAATTCACAGTGAAGGCCTTTCTTTCA
AAAAGGTCTGACCCCATTTGAACATCAGGAGATTCTCAGTAGACCAACACCTTATGAATGCACCCAGTGTG
GGAAGGCCTTTCTTACACAGGCTCATCTGGTGGTCACCAGAAAACCCATACTGGAGAACAGCCCTATGA
ATGCAACAAGTGTGGGAAGTTTTTATGTATAACTCCAACTCATCAGACATCAGAAAAGTTCACACTGGG
GAGAGGCGTTACGAGTGCAGTGAATGTGGGAAATGTTTTATGGACAGCTTCACACTCGGTAGACATCAGA
GAGTTTCATACTGGAGAAAAGGCCTTTTGAATGCAGCATATGTGGAAAATTTCTTATGTCACCCGCTCCACT
CAATATGCACCAGAGAGTTCATGCTGGCAAAGGCCTTTATAAGTGTAGCGAATGTGGGAAAAGCCTTTAGC
CTCAAACATAATGTTGTTGAGCATCTGAAAATTCATACTGGAGAACGGCCTTATGAGTGCAGTGAATGTG
AGAAGGCCTTTGTAGAAAAGTCCCACCTAGTTCAGCACCAGAAAATCCCACTGATGCATTTTCAAAAAG
GTCTGACCTCATTCAACACAAGAGGATTGACATTAGGCCAAGGCCTTATACATGCAGTGAATGTGGGAAG
GCCTTCTTACACAGGCTCATCTGGTGGTCACCAGAAAATCCATACTGGAGAACGGCCTTATGAATGCA
CTCAATGTGCGAAGGCCTTTGTTAGAAAAGTCCCACCTAGTTCAGCATGAGAAAATCCCACTGATGCATT
TTCAAAAAGGTCTGACCTCATTCAACACAAGAGGATTGACCTCAGGCCAAGGCCTTATGTGTGTAGTGAA
TGTGGGAAGGCCTTCCTTACACAGGCTCATCTAGATGGTCACCAGAAAATCCAGACTGGAGAACGGCGTT
ATGAATGCAATGAATGTGGGAAATTCCTTTTGGACAGCTACAACTTGTATTTCATCAGAGAATTCACAC
TGGAGAAAAGCCTTATAATGCAGCAAATGTGGGAAATTCCTTAGATATCGCTGTACACTGAGTAGACAT
CAGAAAAGTTCACACTGGAGAAAAGACCTTATGAGTGTAGTGAATGTGGGAAATTTTTTAGAGATAGCTACA
AACTCATTATTCATCAGAGAGTTCATACTGGAGAAAAGCCTTATGAATGCAGCAACTGTGGGAAGTTTCT
TAGATACCGCTCTACATTCATTAACATCATAAAGTTTGCAGTGGGAGAAAGCCTCATGAGTGCAGTAAA
TGTAGGGAATGTTTAGGACTAAATCGAGCCTTATATACATCAGCAGTCTCACACTGGAGAAAAGTCCTT
TTAAGTTAAGGGAATGTGGGAAAGACTTCAACAAAATGTAATACTGGTCAGCGCAAAAAACTCACACTGG
AGAAAAGTCTTATGAGTGTGGTGAATCCAGCAAAGTGTTTAAATACAACCTCCAGCCTCATTAAACATCAG
ATAATTCATACTGGAAAAGGCCT

ACGCGTACGCGGCCGCTCGAGCAGAAACTCATCTCAGAAGAGGATCTGGCAGCAAATGATATCCTGGATT
ACAAGGATGACGACGATAAGGTTTAA

Protein Sequence: >RC224405 representing NM_001023561
Red=Cloning site Green=Tags(s)

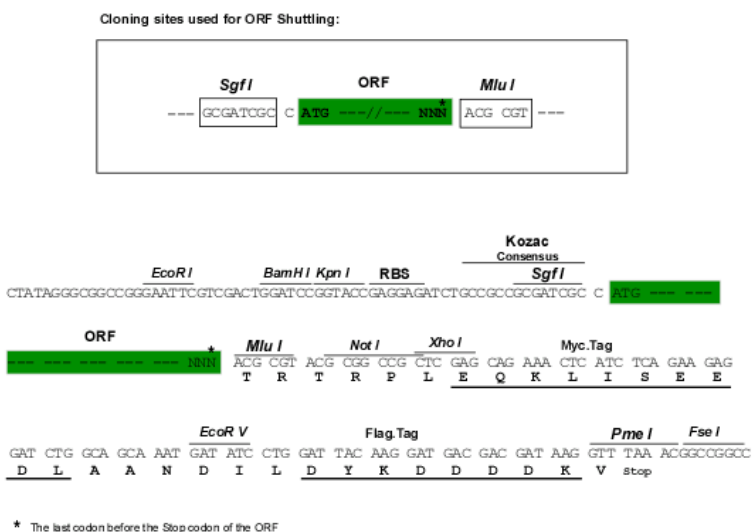
MNLTEDCMVFEDVAIYFSQE EWGILNDAQRHLHSNVMLLENFALLSSVGCWHGAKDEEVPSKQCVSVRVLQ
VTIPKPALSTLKAQPCKMCSSILKDILHLAEHDGTHPEQGLYTCAA EHDHLHQEQIREKL TRSDEWRPSF
VNHSAHVGERNF TCTQGGKDF TASSDLLQQV LNSGWKLYRDTQDGEAFQGEQNDFNSSQGGKDFCHQHG
LFEHQKTHNGERP YEFSECGELFRYNSNL IKYQQNHAGERPYEGTEYGKTFIRKSNLVQH QKIHSEGFSL
KRSDPIEHQEILSRPTPYECTQCGKAFLTQAHLVGHQKTH TGEQPYECNKCGKFFMYNSKLIRHQKVHTG
ERRYECSECGKLFMSFTLGRHQRVHTGERPFEC S ICGKFFSHRSTLNMHQRVHAGKRLYKCSECGKAFS
LKHNVVQHLKIHTGERPYECTECEKAFVRKSHLVQH QKIHTDAFSKRSDLIQHKRIDLRPRPYTCSECGK
AFLTQAHLVGHQKIHTGERPYECTQCAKAFVRKSHLVQHEKIHTDAFSKRSDLIQHKRIDLRPRPYVCE
CGKAFLTQAHLDGHQKIQTGERRYECNECGKFFLDSYKLV IHQRIHTGEKPYKCSKCGKFFRYRCTL SRH
QKVHTGERPYECSECGKFFRDSYKLI IHQRVHTGEKPYEC S NCGKFLRYRSTFIKHHKVCTGKPHCESK
CRELFRTKSSLIIHQQSHTGESPFK LRECGKDFNK CNTGQRQKTH T GERSYECGESSKVFKYNSSLIKHQ
IIHTGKRP

TRTRPLEQKLI SEEDLAANDILDYKDDDDKV

Chromatograms: https://cdn.origene.com/chromatograms/mk8043_g08.zip

Restriction Sites: Sgfl-Mlul

Cloning Scheme:



ACCN: NM_001023561

ORF Size: 2334 bp

OTI Disclaimer: The molecular sequence of this clone aligns with the gene accession number as a point of reference only. However, individual transcript sequences of the same gene can differ through naturally occurring variations (e.g. polymorphisms), each with its own valid existence. This clone is substantially in agreement with the reference, but a complete review of all prevailing variants is recommended prior to use. [More info](#)

OTI Annotation: This clone was engineered to express the complete ORF with an expression tag. Expression varies depending on the nature of the gene.

Components: The ORF clone is ion-exchange column purified and shipped in a 2D barcoded Matrix tube containing 10ug of transfection-ready, dried plasmid DNA (reconstitute with 100 ul of water).

Reconstitution Method:

1. Centrifuge at 5,000xg for 5min.
2. Carefully open the tube and add 100ul of sterile water to dissolve the DNA.
3. Close the tube and incubate for 10 minutes at room temperature.
4. Briefly vortex the tube and then do a quick spin (less than 5000xg) to concentrate the liquid at the bottom.
5. Store the suspended plasmid at -20°C. The DNA is stable for at least one year from date of shipping when stored at -20°C.

RefSeq: [NM_001023561.4](#)

RefSeq Size: 2929 bp

RefSeq ORF: 2337 bp

Locus ID: 388567

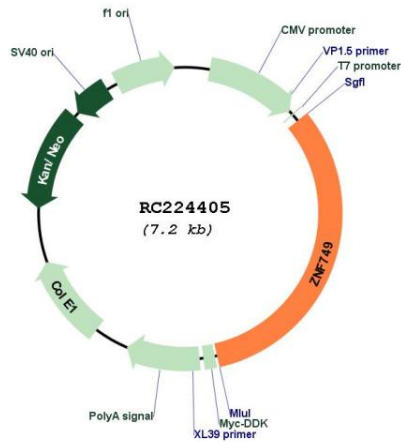
UniProt ID: [O43361](#)

Cytogenetics: 19q13.43

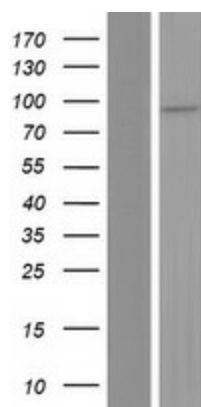
MW: 90.2 kDa

Gene Summary: May be involved in transcriptional regulation.[UniProtKB/Swiss-Prot Function]

Product images:



Circular map for RC224405



Western blot validation of overexpression lysate (Cat# [LY422604]) using anti-DDK antibody (Cat# [TA50011-100]). Left: Cell lysates from untransfected HEK293T cells; Right: Cell lysates from HEK293T cells transfected with RC224405 using transfection reagent MegaTran 2.0 (Cat# [TT210002]).