

Product datasheet for RC224391

GPR105 (P2RY14) (NM_001081455) Human Tagged ORF Clone

Product data:

Product Type:	Expression Plasmids
Product Name:	GPR105 (P2RY14) (NM_001081455) Human Tagged ORF Clone
Tag:	Myc-DDK
Symbol:	GPR105
Synonyms:	BPR105; GPR105; P2Y14
Mammalian Cell Selection:	Neomycin
Vector:	pCMV6-Entry (PS100001)
E. coli Selection:	Kanamycin (25 ug/mL)
ORF Nucleotide Sequence:	>RC224391 ORF sequence Red=Cloning site Blue=ORF Green=Tags(s)

TTTTGTAATACGACTCACTATAGGGCGGCCGGAATTCGTCGACTGGATCCGGTACCGAGGAGATCTGCC
GCC**CGATCGCC**

ATGATCAATTC AACCTCCACACAGCCTCCAGATGAATCCTGCTCTCAGAACCTCCTGATCACTCAGCAGAG
TCATTCCTGTGCTGTACTGTATGGTCTTCATTGCAGGAATCCTACTCAATGGAGTGTGAGGATGGATATT
CTTTTACGTGCCAGCTCTGAGAGTTTCATCATCTATCTCAAGAACATTGTTATTGCTGACTTTGTGATG
AGCCTGACTTTTCCTTTCAAGATCCTTGGTGACTCAGGCCTTGGTCCCTGGCAGCTGAACGTGTTTGTGT
GCAGGGTCTCTGCCGTGCTCTTCTACGTCAACATGTACGTGAGCATTGTGTTCTTTGGGCTCATCAGCTT
TGACAGATATTATAAAATGTAAAGCCTCTTTGGACTTCTTTCATCCAGTCAGTGAGTTACAGCAAACCTT
CTGTCACTGATAGTATGGATGCTCATGCTCCTCCTTGCTGTTCCAAATATTATTCTCACCAACCAGAGTG
TTAGGGAGGTTACACAAATAAAATGTATAGAACTGAAAAGTGAAGTGGGACGGAAGTGGCACAAAGCATC
AAACTACATCTTCGTGGCCATCTTCTGGATTGTGTTTCTTTTGTAAATCGTTTTCTATACTGCTATCACA
AAGAAAATCTTTAAGTCCACCTTAAGTCAAGTCGGAATCCACTTCGGTCAAAAAGAAATCTAGCCGCA
ACATATTCAGCATCGTGTGTTTGTGTTTTTGTCTGTTTTGTACCTTACCATATTGCCAGAATCCCCTACAC
AAAGAGTCAGACCGAAGCTCATTACAGCTGCCAGTCAAAAAGAAATCTTGGGTATATGAAAGAATTCACT
CTGCTACTATCTGCTGCAAATGTATGCTTGGACCCTATTATTTATTTCTTCTATGCCAGCCGTTTAGGG
AAATCTTATGTAAGAAATTCACATTCCATTAAGCTCAGAATGACCTAGACATTTCCAGAATCAAAAG
AGGAAATACAACACTTGAAAGCACAGATACTTTG

ACGCGTACGCGGCCGCTCGAGCAGAACTCATCTCAGAAGAGGATCTGGCAGCAAATGATATCCTGGATT
ACAAGGATGACGACGATAAGGTTTAA



[View online »](#)

Protein Sequence: >RC224391 protein sequence
Red=Cloning site Green=Tags(s)

```
MINSTSTQPPDESCSQNLLITQIIPVLYCMVFIAGILLNGVSGWIFFYVPSSSEFIIYLKNIVIADFVM
SLTFPFKILGDSGLGPWQLNVFVCRVSAVLFYVNMVSVIVFFGLISFDRIYKIVKPLWTSFIQSVSYSKL
LSVIVWMLMLLLAVPNIIILTNQSVREVTQIKCIELKSELGRKWHKASNYIFVAIFWIVFLLLIVFYTAIT
KKIFKSHLKSSRNSTSVKKKSSRNIFSIIVFVFFVCFVPYHIARIPYTKSQTEAHYSCQSKEILRYMKEFT
LLLAAVCLDPIIYFFLCQPFREILCKKLIPLKAQNLDLISRIKRGNTTLESTDTL
```

TRTRPLEQKLISEEDLAANDILDYKDDDDKV

Chromatograms: https://cdn.origene.com/chromatograms/mk6319_g05.zip

Restriction Sites: SgfI-MluI

Cloning Scheme:



ACCN: NM_001081455

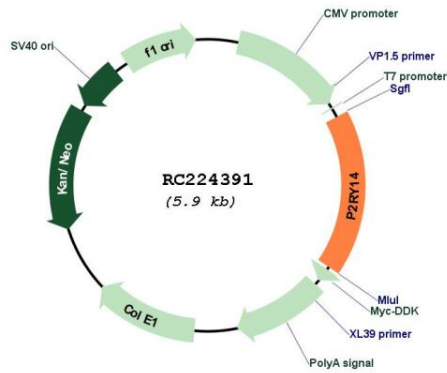
ORF Size: 1014 bp

OTI Disclaimer: Due to the inherent nature of this plasmid, standard methods to replicate additional amounts of DNA in E. coli are highly likely to result in mutations and/or rearrangements. Therefore, OriGene does not guarantee the capability to replicate this plasmid DNA. Additional amounts of DNA can be purchased from OriGene with batch-specific, full-sequence verification at a reduced cost. Please contact our customer care team at custsupport@origene.com or by calling 301.340.3188 option 3 for pricing and delivery.

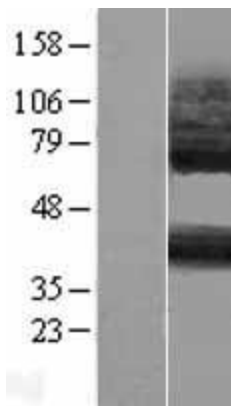
The molecular sequence of this clone aligns with the gene accession number as a point of reference only. However, individual transcript sequences of the same gene can differ through naturally occurring variations (e.g. polymorphisms), each with its own valid existence. This clone is substantially in agreement with the reference, but a complete review of all prevailing variants is recommended prior to use. [More info](#)

OTI Annotation:	This clone was engineered to express the complete ORF with an expression tag. Expression varies depending on the nature of the gene.
Components:	The ORF clone is ion-exchange column purified and shipped in a 2D barcoded Matrix tube containing 10ug of transfection-ready, dried plasmid DNA (reconstitute with 100 ul of water).
Reconstitution Method:	<ol style="list-style-type: none">1. Centrifuge at 5,000xg for 5min.2. Carefully open the tube and add 100ul of sterile water to dissolve the DNA.3. Close the tube and incubate for 10 minutes at room temperature.4. Briefly vortex the tube and then do a quick spin (less than 5000xg) to concentrate the liquid at the bottom.5. Store the suspended plasmid at -20°C. The DNA is stable for at least one year from date of shipping when stored at -20°C.
RefSeq:	NM_001081455.1 , NP_001074924.1
RefSeq Size:	2694 bp
RefSeq ORF:	1017 bp
Locus ID:	9934
UniProt ID:	Q15391
Cytogenetics:	3q25.1
Protein Families:	Druggable Genome, GPCR, Transmembrane
Protein Pathways:	Neuroactive ligand-receptor interaction
MW:	39 kDa
Gene Summary:	The product of this gene belongs to the family of G-protein coupled receptors, which contains several receptor subtypes with different pharmacological selectivity for various adenosine and uridine nucleotides. This receptor is a P2Y purinergic receptor for UDP-glucose and other UDP-sugars coupled to G-proteins. It has been implicated in extending the known immune system functions of P2Y receptors by participating in the regulation of the stem cell compartment, and it may also play a role in neuroimmune function. Two transcript variants encoding the same protein have been identified for this gene. [provided by RefSeq, Jul 2008]

Product images:



Circular map for RC224391



Western blot validation of overexpression lysate (Cat# [LY421155]) using anti-DDK antibody (Cat# [TA50011-100]). Left: Cell lysates from untransfected HEK293T cells; Right: Cell lysates from HEK293T cells transfected with RC224391 using transfection reagent MegaTran 2.0 (Cat# [TT210002]).