

Product datasheet for RC224384L1

ITIH2 (NM_002216) Human Tagged Lenti ORF Clone

Product data:

Product Type:	Expression Plasmids
Product Name:	ITIH2 (NM_002216) Human Tagged Lenti ORF Clone
Tag:	Myc-DDK
Symbol:	ITIH2
Synonyms:	H2P; SHAP
Mammalian Cell Selection:	None
Vector:	pLenti-C-Myc-DDK (PS100064)
E. coli Selection:	Chloramphenicol (34 ug/mL)
ORF Nucleotide Sequence:	The ORF insert of this clone is exactly the same as(RC224384).
Restriction Sites:	SgfI-MluI
Cloning Scheme:	

Cloning sites used for ORF Shuttling:



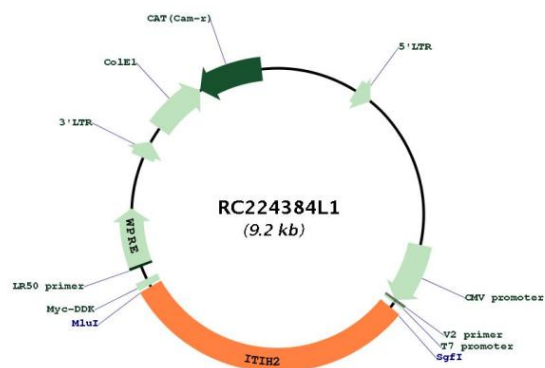
* The last codon before the Stop codon of the ORF.

ACCN:	NM_002216
ORF Size:	2838 bp

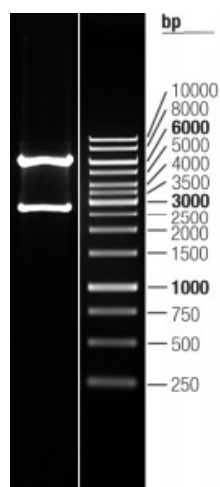


OTI Disclaimer:	The molecular sequence of this clone aligns with the gene accession number as a point of reference only. However, individual transcript sequences of the same gene can differ through naturally occurring variations (e.g. polymorphisms), each with its own valid existence. This clone is substantially in agreement with the reference, but a complete review of all prevailing variants is recommended prior to use. More info
OTI Annotation:	This clone was engineered to express the complete ORF with an expression tag. Expression varies depending on the nature of the gene.
Components:	The ORF clone is ion-exchange column purified and shipped in a 2D barcoded Matrix tube containing 10ug of transfection-ready, dried plasmid DNA (reconstitute with 100 ul of water).
Reconstitution Method:	<ol style="list-style-type: none"> 1. Centrifuge at 5,000xg for 5min. 2. Carefully open the tube and add 100ul of sterile water to dissolve the DNA. 3. Close the tube and incubate for 10 minutes at room temperature. 4. Briefly vortex the tube and then do a quick spin (less than 5000xg) to concentrate the liquid at the bottom. 5. Store the suspended plasmid at -20°C. The DNA is stable for at least one year from date of shipping when stored at -20°C.
RefSeq:	NM_002216.2
RefSeq Size:	3198 bp
RefSeq ORF:	2841 bp
Locus ID:	3698
UniProt ID:	P19823
Cytogenetics:	10p14
Domains:	VWA, VIT
MW:	106.3 kDa
Gene Summary:	The inter-alpha-trypsin inhibitors (ITI) are a family of structurally related plasma serine protease inhibitors involved in extracellular matrix stabilization and in prevention of tumor metastasis. The ITI family contains multiple proteins made up of a light chain (see MIM 176870) and a variable number of heavy chains (Salier et al., 1987 [PubMed 2446322]; Himmelfarb et al., 2004 [PubMed 14744536]).[supplied by OMIM, Nov 2009]

Product images:



Circular map for RC224384L1



Double digestion of RC224384L1 using SgfI and MluI