

Product datasheet for RC224373

GIPC (GIPC1) (NM_202468) Human Tagged ORF Clone

Product data:

Product Type:	Expression Plasmids
Product Name:	GIPC (GIPC1) (NM_202468) Human Tagged ORF Clone
Tag:	Myc-DDK
Symbol:	GIPC
Synonyms:	C19orf3; GIPC; GLUT1CBP; Hs.6454; IIP-1; NIP; OPDM2; RGS19IP1; SEMCAP; SYNECTIN; SYNECTIN; TIP-2
Mammalian Cell Selection:	Neomycin
Vector:	pCMV6-Entry (PS100001)
E. coli Selection:	Kanamycin (25 ug/mL)
ORF Nucleotide Sequence:	>RC224373 ORF sequence Red=Cloning site Blue=ORF Green=Tags(s)

TTTTGTAATACGACTCACTATAGGGCGGCCGGAATTCGTCGACTGGATCCGGTACCGAGGAGATCTGCC
GCCGCGATCGCC

ATGCCGCTGGGACTGGGGCGCGGAAAAAGGCGCCCCCTCTAGTGAAAAATGAGGAGGCTGAGCCAGGCC
GTGGAGGGCTGGGCGTGGGGGAGCCAGGGCCTCTGGGCGGAGGTGGGTCGGGGGGCCCCAAATGGGCTT
GCCCCCCTCCCCAGCCCTGCGGCCCGCCTCGTGTCCACACCCAGCTGGCCATGGCAGTCCCCT
GGCCGCATCGAGGGCTTCAACAACGTCAAGGAGCTGTATGGCAAGATCGCCGAGGCTTCCGCCTGCCAA
CTGCCGAGGTGATGTTCTGCACCCTGAACACCCACAAAGTGGACATGGACAAGCTCCTGGGGGGCCAGAT
CGGGCTGGAGGACTTCATCTTCGCCACGTGAAGGGCAGCGCAAGGAGGTGGAGGTGTTCAAGTCGGAG
GATGCACTCGGGCTCACCATCACGGACAACGGGGCTGGCTACGCCTTCATCAAGCGCATCAAGGAGGGCA
GGTGATCGACCACATCCACCTCATCAGCGTGGGCGACATGATCGAGGCCATTAACGGGCAGAGCCTGCT
GGGCTGCCGCACTACGAGGTGGCCCGGCTGCTCAAGGAGCTGCCCGAGGCCGTACCTTACGCTGAAG
CTCACGGAGCCTCGAAGGCCTTCGACATGATCAGCCAGCGTTCAGCGGGTGGCCGCCCTGGCTCTGGCC
CACAATGGGCACTGGCCGAGGGACCCTGCGGCTCCGATCCCAGGGCCCCGCCACGGTGGAGGATCTGCC
CTCTGCCTTTGAAGAGAAGGCCATTGAGAAGGTGGATGACCTGCTGGAGAGTTACATGGGTATCAGGGAC
ACGGAGCTGGCGCCACCATGGTGGAGCTGGGAAAGGACAAAAGGAACCCGGATGAGCTGGCCGAGGCC
TGGACGAACGGCTGGGTGACTTTGCCTCCCTGACGAGTTCGCTTTGACGCTCTGGGGCGCCATTGGGA
CGCCAAGGTCGGCCGCTAC

ACGCGTACGCGGCCGCTCGAGCAGAACTCATCTCAGAAGAGGATCTGGCAGCAAATGATATCCTGGATT
ACAAGGATGACGACGATAAGGTTTAA



[View online »](#)

Protein Sequence: >RC224373 protein sequence
 Red=Cloning site Green=Tags(s)

MPLGLGRRKKAPPLVENEEAEPGRGGLGVGEPGLGGGSGGPQMGLPPPPPALRPRLVFHTQLAHGSPT
 GRIEGFTNVKELYGKIAEAFRLPTAEVMFCTLNTHKVDMDKLLGGQIGLEDFIFAHVKGQRKEVEVFKSE
 DALGLTITDNGAGYAFIKRIKEGSVIDHIHLISVGMIEAINGQSLGCRHYEVARLLKELPRGRTFTLK
 LTEPRKAFDMISQRSAGGRPGSGPQLGTGRGTLRLRSRGPATVEDLPFAFEKAIEKVDDLLESYMGIRD
 TELAATMVELGKDKRNPDELAELDERLGDFAFPDEFVFDVWGAIGDAKVGRY

TRTRP**LE**Q**KLI**SEED**LA**AND**ILDYK**DDDD**KV**

Chromatograms: https://cdn.origene.com/chromatograms/mk6569_f05.zip

Restriction Sites: SgfI-MluI

Cloning Scheme:



ACCN: NM_202468

ORF Size: 999 bp

OTI Disclaimer: The molecular sequence of this clone aligns with the gene accession number as a point of reference only. However, individual transcript sequences of the same gene can differ through naturally occurring variations (e.g. polymorphisms), each with its own valid existence. This clone is substantially in agreement with the reference, but a complete review of all prevailing variants is recommended prior to use. [More info](#)

OTI Annotation: This clone was engineered to express the complete ORF with an expression tag. Expression varies depending on the nature of the gene.

Components: The ORF clone is ion-exchange column purified and shipped in a 2D barcoded Matrix tube containing 10ug of transfection-ready, dried plasmid DNA (reconstitute with 100 ul of water).

Reconstitution Method:

1. Centrifuge at 5,000xg for 5min.
2. Carefully open the tube and add 100ul of sterile water to dissolve the DNA.
3. Close the tube and incubate for 10 minutes at room temperature.
4. Briefly vortex the tube and then do a quick spin (less than 5000xg) to concentrate the liquid at the bottom.
5. Store the suspended plasmid at -20°C. The DNA is stable for at least one year from date of shipping when stored at -20°C.

RefSeq: [NM_202468.3](#)

RefSeq Size: 1908 bp

RefSeq ORF: 1002 bp

Locus ID: 10755

UniProt ID: [O14908](#)

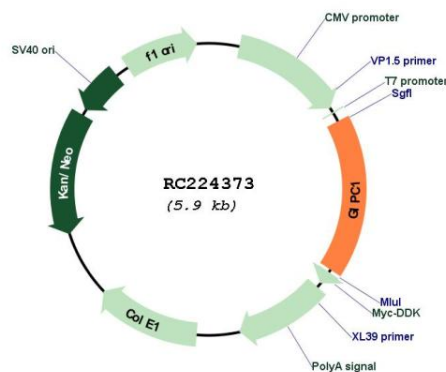
Cytogenetics: 19p13.12

Protein Families: Druggable Genome

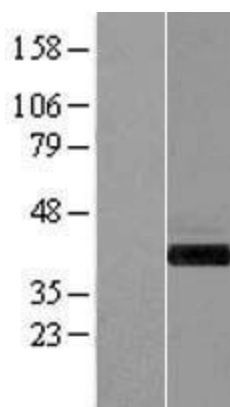
MW: 36 kDa

Gene Summary: GIPC1 is a scaffolding protein that regulates cell surface receptor expression and trafficking (Lee et al., 2008 [PubMed 18775991]).[supplied by OMIM, Apr 2009]

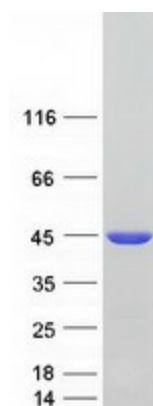
Product images:



Circular map for RC224373



Western blot validation of overexpression lysate (Cat# [LY404361]) using anti-DDK antibody (Cat# [TA50011-100]). Left: Cell lysates from untransfected HEK293T cells; Right: Cell lysates from HEK293T cells transfected with RC224373 using transfection reagent MegaTran 2.0 (Cat# [TT210002]).



Coomassie blue staining of purified GIPC1 protein (Cat# [TP324373]). The protein was produced from HEK293T cells transfected with GIPC1 cDNA clone (Cat# RC224373) using MegaTran 2.0 (Cat# [TT210002]).