

Product datasheet for **RC224372**

BTF (BCLAF1) (NM_014739) Human Tagged ORF Clone

Product data:

Product Type:	Expression Plasmids
Product Name:	BTF (BCLAF1) (NM_014739) Human Tagged ORF Clone
Tag:	Myc-DDK
Symbol:	BTF
Synonyms:	bK211L9.1; BTF
Mammalian Cell Selection:	Neomycin
Vector:	pCMV6-Entry (PS100001)
E. coli Selection:	Kanamycin (25 ug/mL)



[View online »](#)

ORF Nucleotide Sequence:

>RC224372 ORF sequence
 Red=Cloning site Blue=ORF Green=Tags(s)

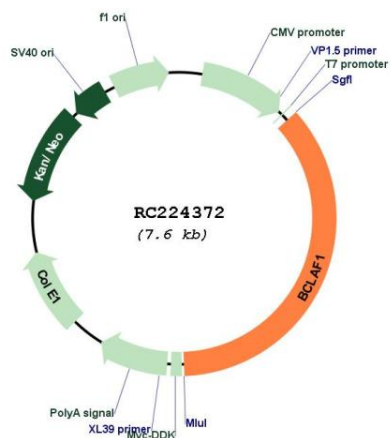
TTTTGTAATACGACTCACTATAGGGCGGCCGGAATTCGTGACTGGATCCGGTACCGAGGAGATCTGCC
 GCC**CGCATCGCC**

ATGGGTCGCTCCAATTCTAGATCACATTCTTCAAGGTCAAAGTCTAGATCACAGTCTAGTCTCGATCAA
 GATCAAGATCTCATTCTAGAAAGAAGCGATACAGTTCTAGGTCTCGTTCCAGAACATATCAAGGTCTCG
 TAGTAGAGATCGTATGTATTCTAGAGATTATCGTCGCGATTACAGAAATAATAGAGGAATGAGACGACCT
 TATGGGTACAGAGGAAGGGGTAGAGGGTATTATCAAGGAGGAGGAGTAGATATCATCGAGGTGGTTATA
 GACCTGTCTGGAATAGAAGGCACCTTAGGAGTCTAGACGAGGTCTCACGTTCCAGGAGTCCAAAAAG
 AAGATCCGTTTCTTCTCAAAGATCCAGAAGCAGATCTCGCCGGTCATATAGATCTTCTAGGTCTCCAAGA
 TCATCCTCTTCTCGTTTTCATCCCATATAGCAAATCTCCTGTTTCTAAAAGACGAGGGTCTCAGGAAA
 AACAAACCAAAAAAGCTGAAGGGGAACCCCAAGAAGAGAGTCCGTTGAAAAGTAAATCACAGGAGGAACC
 GAAAGATACATTTGAACATGACCCATCTGAGTCTATCGATGAATTTAATAAGTCATCAGCCACATCCGGT
 GATATTTGGCCTGGCCTTTCAGCTTATGATAATAGTCCTAGATCACCCCATAGTCCTTCCACTATTGCTA
 CACCACCTAGTCAGAGTTCATCTTGCTCTGATGCTCCCATGCTCAGTACAGTTCACTCTGAAAAAATAC
 TCCTTCTCAGCATTACATTCCATTAGCATAGTCTGAAAGGTCTGGGTCTGGTTCTGTTGAAATGGA
 TCTAGTCGATACAGTCTTCTCAGAATAGTCCAATTCATCACATCCCTTCCAGAAAGTCTGCAAGA
 CAATCGCACACAGAATGCTCCAAGAGATGAGTCTAGGGGCCGTTCTCGTTTTATCCTGATGGTGGAGA
 TCAGGAAACTGCAAGACTGGGAAGTCTTAAAAAGGTTACAGATGAAGAGTCTAGAGTATTCTGCTT
 GATAGGGGTAATACCAGGGATAAAGAGGCTTCAAAGAGAAAGGATCAGAGAAAGGGAGGCAGAGGGAG
 AATGGGAAGATCAGGAAGCTTAGATTACTTCAAGTATAAAGAGTCTGGAAAACAAAAGTTAATGATTC
 AGAAGGGGATGACACAGAGGAGACAGAGGATTATAGACAGTTCAGGAAGTCACTCCTCGCAGATCAGGGT
 AAAAGTTTTGCTACTGCATCTCACCGGAATACTGAGGAGGAAGGACTCAAGTACAAGTCCAAAGTTTAC
 TGAAAGGCAATAGAGAAAGTATGGATTAGAGAAGAAAAAATTATAAACTTAAAGAGACTGGATATGT
 AGTGGAAAGGCCTAGCACTACAAAAGATAAGCACAAAAGAAGACAAAATTTCTGAAAGAATAACAGTA
 AAGAAAGAAACTCAGTCACCTGAGCAGGTAAGTCTGAAAAGCTCAAAGACCTCTTTGATTACAGTCCCC
 CTCTACACAAGAATCTGGATGCACGAGAAAAGTCTACCTCAGAGAGGAAAGCCACTTAGGATCAAAAT
 GATAGCGAGTGATTCTCACCGTCTGAAGTCAAATCAAATGGCACCTGTTCTCTTGATGATTCTAAC
 AGACCTGCTTCTTGACTAAAGACAGGCTGCTTGCTAGTACACTTGTCATTCTGTCAAGAAGGAGCAAG
 AATTCGATCCATCTTTGACCACATTAAGTTGCCACAGGCCAGCAAAAGCACTTCAGAGTCAATTTATCA
 ACACATTTGTGCTTGGTTCATCATGTTAAAGAGCAATACTTCAAGTCAGCTGCAATGACCCATAACGAG
 CGGTTCACTTCGATCAGAAAGCCACTGAAGAACATAGTACTCGGCAAAAGAGCCCTGAAATACACAGGA
 GAATTTGACATCTACCAAGTACCCTGAGGAAGCATACCCGTTTAGCAGGGGAAGAGAGATTTTTAAAGA
 AGAAAATCAAAGGGAGATAAAAAATTAAGGTGTGACTCTGCTGACCTTCGGCATGACATTGATCGCCGT
 AGAAAAGAAAGAGTAAAGAACGGGGAGATTCCAAGGGCTCCAGGAATCCAGTGGATCAAGAAAGCAGG
 AAAAACTCCAAAAGATTACAAGGAATACAAATCTTACAAAGATGACAGTAAACATAAAAGAGAGCAAGA
 TCATTTCTCGATCTTCATCCTCTTCAGCATCACCTTCTTCCCAGTTCGAGAAGAAAAGGAGAGTAAG
 AAGGAAAGAGAAGAAGAAATTTAAAACTCACCATGAAATGAAAGAATACTCAGGCTTTGCAGGAGTTAGCC
 GACCACGAGGAACCTTTTTTTCGAATTAGAGGCAGAGGAAGAGCCAGAGGAGTTTTTGTGGGACAATAC
 TGGTCCAAACAACCTCAAATACTACTTTTTCAAAGAGACCGAAGGAAGAGGAATGGGATCCAGAATATACC
 CCAAAGAGCAAGAAGTACTTCTTGATGACGACAGAGATGATGGTGTGGATTATTGGGCCAAAAGAGGAA
 GAGGTCGTGGTACTTTTTCAACGTGGCAGAGGGCGCTTAACTTCAAAAAATCAGGTAGCAGTCTAAATG
 GACTCATGACAAATACCAAGGGGATGGGATTGTTGAAGATGAAGAAGAGACCATGAAAAATAATGAAGAA
 AAGAAGGACAGACGAAGGAAGAAAAGGAA

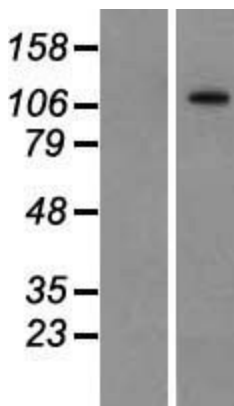
ACGCGTACGCGGCCGCTCGAGCAGAAACTCATCTCAGAAGAGGATCTGGCAGCAAATGATATCCTGGATT
 ACAAGGATGACGACGAT AAGGTTTAA

OTI Disclaimer:	The molecular sequence of this clone aligns with the gene accession number as a point of reference only. However, individual transcript sequences of the same gene can differ through naturally occurring variations (e.g. polymorphisms), each with its own valid existence. This clone is substantially in agreement with the reference, but a complete review of all prevailing variants is recommended prior to use. More info
OTI Annotation:	This clone was engineered to express the complete ORF with an expression tag. Expression varies depending on the nature of the gene.
Components:	The ORF clone is ion-exchange column purified and shipped in a 2D barcoded Matrix tube containing 10ug of transfection-ready, dried plasmid DNA (reconstitute with 100 ul of water).
Reconstitution Method:	<ol style="list-style-type: none">1. Centrifuge at 5,000xg for 5min.2. Carefully open the tube and add 100ul of sterile water to dissolve the DNA.3. Close the tube and incubate for 10 minutes at room temperature.4. Briefly vortex the tube and then do a quick spin (less than 5000xg) to concentrate the liquid at the bottom.5. Store the suspended plasmid at -20°C. The DNA is stable for at least one year from date of shipping when stored at -20°C.
RefSeq:	NM_014739.3
RefSeq Size:	7277 bp
RefSeq ORF:	2763 bp
Locus ID:	9774
UniProt ID:	Q9NYF8
Cytogenetics:	6q23.3
Protein Families:	Transcription Factors
MW:	106.1 kDa
Gene Summary:	This gene encodes a transcriptional repressor that interacts with several members of the BCL2 family of proteins. Overexpression of this protein induces apoptosis, which can be suppressed by co-expression of BCL2 proteins. The protein localizes to dot-like structures throughout the nucleus, and redistributes to a zone near the nuclear envelope in cells undergoing apoptosis. Multiple transcript variants encoding different isoforms have been found for this gene. [provided by RefSeq, Jul 2008]

Product images:



Circular map for RC224372



Western blot validation of overexpression lysate (Cat# [LY415075]) using anti-DDK antibody (Cat# [TA50011-100]). Left: Cell lysates from untransfected HEK293T cells; Right: Cell lysates from HEK293T cells transfected with RC224372 using transfection reagent MegaTran 2.0 (Cat# [TT210002]).