

## Product datasheet for RC224371

### ZNF217 (NM\_006526) Human Tagged ORF Clone

#### Product data:

**Product Type:** Expression Plasmids  
**Product Name:** ZNF217 (NM\_006526) Human Tagged ORF Clone  
**Tag:** Myc-DDK  
**Symbol:** ZNF217  
**Synonyms:** ZABC1  
**Mammalian Cell Selection:** Neomycin  
**Vector:** pCMV6-Entry (PS100001)  
**E. coli Selection:** Kanamycin (25 ug/mL)  
**ORF Nucleotide Sequence:** >RC224371 ORF sequence  
 Red=Cloning site Blue=ORF Green=Tags(s)

TTTTGTAATACGACTCACTATAGGGCGGCCGGAATTCGTCGACTGGATCCGGTACCGAGGAGATCTGCC  
 GCCCGCATCGCC

ATGCAATCGAAAGTGACAGGAAACATGCCAACTCAATCCCTCTTAATGTACATGGATGGGCCAGAAGTGA  
 TTGGCAGCTCTTTGGCAGTCCGATGGAGATGGAGGATGCCTTGCAATGAAAGGGACCGCTGTTGTTCC  
 ATTCGAGCTACACAAGAAAAAATGTCATCCAAATCGAGGGTATATGCCCTTGGATTGCATGTTCTGC  
 AGCCAGACCTTACACATTCAGAAGACCTTAATAAACATGTCTTAATGCAACACCGGCCTACCCTCTGTG  
 AACCAGCAGTTCTTCGGTTGAAGCAGAGTATCTCAGTCCGCTTGATAAAAGTCAAGTGCGAACAGAACC  
 TCCAAGGAAAAGATTGCAAGGAAAATGAATTTAGCTGTGAGGTATGTGGGCAGACATTTAGAGTCGCT  
 TTTGATGTTGAGATCCACATGAGAACACACAAAGATTCTTCACTTACGGGTGTAACATGTGCGGAAGAA  
 GATTCAAGGAGCCTTGGTTTCTTAAAAATCACATGCGGACACATAATGGCAAATCGGGGGCCAGAAGCAA  
 ACTGCAGCAAGGCTTGGAGAGTAGTCCAGCAACGATCAACGAGGTCGTCAGGTGCACGCGGCCGAGAGC  
 ATCTCCTCTCCTTACAAAATCTGCATGGTTTGTGGCTTCTATTTCCAAATAAAGAAAGTCTAATTGAGC  
 ACCGCAAGGTGCACCAAAAAAATGCTTTCGGTACCAGCAGCGCGCAGACAGACTCTCCACAAGGAGG  
 AATGCCGTCTCGAGGGAGGACTTCTGCAGTTGTTCAACTTGAGACAAAATCTCACCTGAAACGGGG  
 AAGAAGCCTGTGAGATGCATCCCTCAGCTCAGTCCGTTCCACCTTCCAGGCTTGGCAGTGGCTACCA  
 AAGGAAAAGTTGCCATTTGCCAAGAAGTGAAGGAATCGGGCAAGAAGGGAGCACCGACAACGAGATT  
 GAGTTCGAGAAGGAGCTTGGAGAAACAAATAAGGGCAGTTGTGACGGCTCTCGCAAGAGAAAGAGAAG  
 TGCAAAACTCCACGGCGAAGCGCCCTCCGTGGACGCGGATCCCAAGTTACCCAGTAGCAAGGAGAAGC  
 CCACTCACTGCTCCGAGTGCGGCAAAGCTTTCAGAACCTACCACCAGCTGGTCTTGCACTCCAGGGTCCA  
 CAAGAAGGACCGGAGGGCCGGCGGAGTCGCCACCATGTCTGTGGACGGGAGGAGCCGGGGACGTGT  
 TCTCTGACCTCGCCGCCCTCTGGATGAAAATGGAGCCGTGGATCGAGGGGAAGGTGGTTCTGAAGACG  
 GATCTGAGGATGGCTTCCCGAAGGAATCCATCTGGATAAAAATGATGATGGAGGAAAAATAAACATCT  
 TACATCTCAAGAGAGTGTAGTTATTGTGAAAGTTTTCCGTTCAAATTATTACCTCAATATTCATCTC



AGAACGCATACAGGTGAAAAACCATACAAATGTGAATTTTGTGAATATGCTGCAGCCCAGAAGACATCTC  
 TGAGGTATCACTTGGAGAGACATCAAGGAAAAACCAACCGATGTTGCTGCTGAAGTCAAGAACGATGG  
 TAAAAATCAGGACACTGAAGATGCACTATTAACCGCTGACAGTGCGCAAAACCAAAATTTGAAAAGATTT  
 TTTGATGGTGCCAAAGATGTTACAGGCAGTCCACCTGCAAAGCAGCTTAAGGAGATGCCTTCTGTTTTTC  
 AGAATGTTCTGGGCAGCGCTGCCTCTCACCAGCACACAAAGATACTCAGGATTTCCATAAAAAATGCAGC  
 TGATGACAGTGTGATAAAGTGAATAAAAAACCTACCCCTGCTTACCTGGACCTGTTAAAAAGAGATCA  
 GCAGTTGAAACTCAGGCAATAACCTCATCTGTAGAACCAAGCGGATGTTACTCCTCCTCCGGATGGCA  
 GTACCCATAACCTTGAAGTTAGCCCAAGAGAAAGCAACCGAGACCGCAGCTGACTGCAGATACAG  
 GCCAAGTGTGGATTGTACGAAAAACCTTTAAATTTATCCGTGGGGGCTCTTACAAATTGCCCGCAATT  
 TCTTTGAGTAAAAGTTTATTCCAAGTATCACCTGTCCATTTTGTACCTCAAGACATTTTATCCAGAAG  
 TTTAATGATGCACCAGAGACTGGAGCATAAATAACAATCCTGACGTTTCAAAAACTGTCGAAACAAGTC  
 CTTGCTTAGAAGTCGACGTACCGGATGCCCGCAGCGTTGCTGGGAAAAGATGTGCCTCCCTCTCTAGT  
 TTCTGTAACCAAGCCCAAGTCTGCTTCCCGGCGCAGTCCAAATCCCTGCCATCTGCGAAGGGGAAGC  
 AGAGCCCTCCTGGCCAGGCAAGGCCCTCTGACTTCAGGGATAGACTCTAGCACTTTAGCCCAAGTAA  
 CCTGAAGTCCCACAGACCACAGCAGAATGTGGGGTCCAAGGGGCCGCCACCAGGCAACAGCAATCTGAG  
 ATGTTTCCATAAACCAAGTGTTCCTGACCCGATAAGACAAAAAGACCCGAGACAAAAATTGAAACCTC  
 TTCCAGTAGCTCCTTCTCAGCCACCCCTCGGCAGCAGTAACATCAATGGTTCCATCGACTACCCCGCAA  
 GAACGACAGCCCGTGGGCACCTCCGGAAGAGACTATTTCTGTAATCGGAGTGCCAGCAATACTGCAGCA  
 GAATTTGGTGAGCCCTTCCAAAAGACTGAAGTCCAGCGTGGTTGCCCTTGACGTTGACCAGCCCGGGG  
 CCAATTACAGAAGAGGCTATGACCTTCCCAAGTACCATATGGTCAGAGGCATCACATCACTGTTACCGCA  
 GGACTGTGTGATCCGTCGACGGCGTGCCTCCCAACCAAGTTCTGAGCTCCAGCGAGGTGATTCT  
 CCAATGTGCTGACTGTTCAAGCCCTATGGTGGCTCCGGGCCACTTTACACTTGTGTGCTGCTGGTA  
 GTCCAGCATCCAGCTCGACGTTAGAAGGAAAAAGCCCTGTGTCATATCAACACTTATCTAACAGCATGGC  
 ACAAAAGAGAACTATGAGAATTTATTGGGAATGCACATTATCGACCAATGACAAAAAACT

ACGCGTACGCGGCCGCTCGAGCAGAACTCATCTCAGAAGAGGATCTGGCAGCAATGATATCCTGGATT  
 ACAAGGATGACGACGATAAGGTTTAA

**Protein Sequence:**

>RC224371 protein sequence  
 Red=Cloning site Green=Tags(s)

MQSKVTGNMPTQSLLMYMDGPEVIGSSLSGSPMEMEDALSMKGTAVVPFRATQEKVNIQIEGYMPLDCMFC  
 SQTFTHSEDLNKHVLMQHRPTLCEPAVLRVEAEYL SPLDKSQVRTEPPKEKNCKENEFSCVECGQTRVA  
 FDVEIHMRTHKDSFTYGCNMGRRFKEPWF LKNHMRTHNGKSGARSKLQQGLESSPATINEVVQVHAAES  
 ISSPYKICMVCGLFPNKESLIEHRKVHTKKTAFGTSSAQTDSPPQGGMPSSREDFLQLFNL RPKSHPETG  
 KKPVRCIPQLDPFTTFQAWQLATKGKVAICQEVKESGQEGSTDNDSSSEKELGETNKGSCAGLSQEKEK  
 CKHSHGEAPSV DADPKLPSSKEKPTHCECGKAFRTYHQLVLSRVHKKDRRAGAESPTMSVDGRQPGTC  
 SPDLAAPLDENGAVDRGEGGSEDGSEDLPEGIHL DKNDDGGKIKHL TSSRECSYCGKFFRSNYLNIHL  
 RTHTGEKPYKCFCEYAAAQKTS LRYHLERHHKEKQTDVAAEVKNDGKNQDTE DALLTADS AQTKNLKRF  
 FDGAKDVTGSPPAKQLKEMPSVFQNVLGS AVL SPAHKDTQDFHKNAA DSDKVNKNPTPAYLDLLKKRS  
 AVETQANNLICRTKADVT PPPDGSTTHNLEVSPKEKQTE TAADCRYRPSVD CHEKPLNLSV GALHNCPAI  
 SLSKSLIPSITCPFCTFKTFYPEVLM MHQRLEHKYNPDVHKNCRNKSLLSRRTGCPPALLGKDVPLSS  
 FCKPKKSAFPAQSKSLPSAKGKQSPPGPKAPL TSGIDSSTLAPSNLKSHPQQNVGVQGAATRQQQSE  
 MFPKTSVSPADKTKRPETKLPVAPSQPTLGSSNINGSIDYPAKNDSWPAPPGRDYFCNRSASNTAA  
 EFGPELPKRLKSSVVALDVDQPGANYRRGYDL PKYHMRGIT SLLPQDCVYPSQALPPKPRFLSSSEVDS  
 PNVLTVQKPYGGSGPLYTCVPAGSPASSSTLEGKRPVSYQHL SNSMAQKRNYENFIGNAHRPNDDKKT

TRTRPLEQKLI SEEDLAANDILDYKDDDDKV

**Chromatograms:**

[https://cdn.origene.com/chromatograms/mk6602\\_h01.zip](https://cdn.origene.com/chromatograms/mk6602_h01.zip)

**Restriction Sites:**

Sgfl-MluI

**Cloning Scheme:**


**ACCN:** NM\_006526

**ORF Size:** 3144 bp

**OTI Disclaimer:** The molecular sequence of this clone aligns with the gene accession number as a point of reference only. However, individual transcript sequences of the same gene can differ through naturally occurring variations (e.g. polymorphisms), each with its own valid existence. This clone is substantially in agreement with the reference, but a complete review of all prevailing variants is recommended prior to use. [More info](#)

**OTI Annotation:** This clone was engineered to express the complete ORF with an expression tag. Expression varies depending on the nature of the gene.

**Components:** The ORF clone is ion-exchange column purified and shipped in a 2D barcoded Matrix tube containing 10ug of transfection-ready, dried plasmid DNA (reconstitute with 100 ul of water).

- Reconstitution Method:**
1. Centrifuge at 5,000xg for 5min.
  2. Carefully open the tube and add 100ul of sterile water to dissolve the DNA.
  3. Close the tube and incubate for 10 minutes at room temperature.
  4. Briefly vortex the tube and then do a quick spin (less than 5000xg) to concentrate the liquid at the bottom.
  5. Store the suspended plasmid at -20°C. The DNA is stable for at least one year from date of shipping when stored at -20°C.

**RefSeq:** [NM\\_006526.3](#)

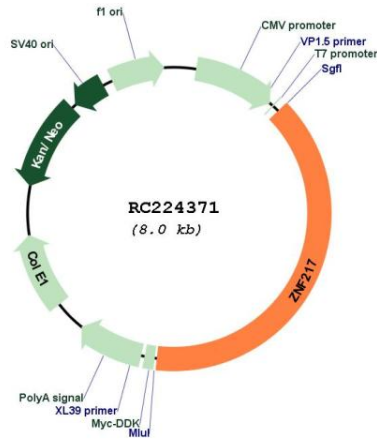
**RefSeq Size:** 5653 bp

**RefSeq ORF:** 3147 bp

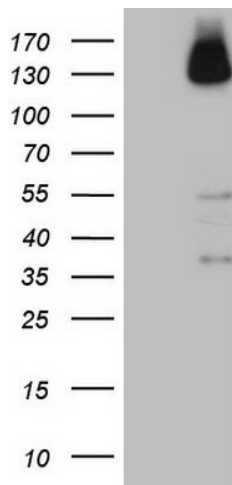
**Locus ID:** 7764

**UniProt ID:** [O75362](#)

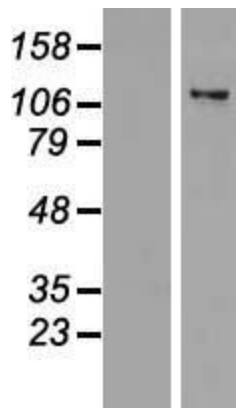
**Cytogenetics:** 20q13.2  
**Domains:** zf-C2H2  
**Protein Families:** Transcription Factors  
**MW:** 115.3 kDa  
**Gene Summary:** Binds to the promoters of target genes and functions as repressor. Promotes cell proliferation and antagonizes cell death. Promotes phosphorylation of AKT1 at 'Ser-473'. [UniProtKB/Swiss-Prot Function]

**Product images:**


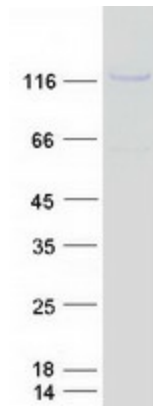
Circular map for RC224371



HEK293T cells were transfected with the pCMV6-ENTRY control (Cat# [PS100001], Left lane) or pCMV6-ENTRY ZNF217 (Cat# RC224371, Right lane) cDNA for 48 hrs and lysed. Equivalent amounts of cell lysates (5 ug per lane) were separated by SDS-PAGE and immunoblotted with anti-ZNF217 (Cat# [TA809028])(1:2000). Positive lysates [LY416585] (100ug) and [LC416585] (20ug) can be purchased separately from OriGene.



Western blot validation of overexpression lysate (Cat# [LY416585]) using anti-DDK antibody (Cat# [TA50011-100]). Left: Cell lysates from untransfected HEK293T cells; Right: Cell lysates from HEK293T cells transfected with RC224371 using transfection reagent MegaTran 2.0 (Cat# [TT210002]).



Coomassie blue staining of purified ZNF217 protein (Cat# [TP324371]). The protein was produced from HEK293T cells transfected with ZNF217 cDNA clone (Cat# RC224371) using MegaTran 2.0 (Cat# [TT210002]).