

Product datasheet for **RC224370**

ZNF569 (NM_152484) Human Tagged ORF Clone

Product data:

Product Type:	Expression Plasmids
Product Name:	ZNF569 (NM_152484) Human Tagged ORF Clone
Tag:	Myc-DDK
Symbol:	ZNF569
Synonyms:	ZAP1; Zfp74; ZNF
Mammalian Cell Selection:	Neomycin
Vector:	pCMV6-Entry (PS100001)
E. coli Selection:	Kanamycin (25 ug/mL)



[View online »](#)

ORF Nucleotide Sequence:

>RC224370 representing NM_152484
 Red=Cloning site Blue=ORF Green=Tags(s)

TTTTGTAATACGACTCACTATAGGGCGGCCGGAATTCGTCGACTGGATCCGGTACCGAGGAGATCTGCC
 GCC**CGCATCGCC**

ATGACTGAGTCCCAGGGAACAGTAACATTCAAAGATGTGGCTATCGACTTCACTCAGGAGGAGTGAAGA
 GATTGGATCCTGCTCAGAGAAAACCTGTACCGGAATGTGATGCTAGAAAACATAACAACCTTAATCACAGT
 AGGCTATCCGTTACCAAACCTGATGTGATTTTCAAATTGGAGCAAGAAGAACCATGGGTGATGGAG
 GAAGAAGTATTAAGGAGACACTGGCAAGGAGAAAATATGGGGAGTTGATGAGCATCAGAAAAACCAGGACA
 GACTTTTGAGACAAGTTGAAGTTAAATTCAGAAAACACTGACTGAAGAAAAAGGCAATGAATGTCAAAA
 GAAATTTGCAATGTATTTCTCTGAACCTGATTTTTTCCCTCCAGACACAATCTCTATGAGTATGAC
 TTATTTGGAAAGTGTGTAACATAATTTGACTGTCATAATAATGTGAAATGCCTTATGAGAAAGGAGC
 ATTTGTAATATAATGAACCTGTGAAATCATATGGTAATAGCTCATCCATTTTGCATTACCCCTTTAA
 GTGTAATCATTGTGAAAAGGCTTCAATCAGACTTTGGACCTCATCAGACATCTGAGAATTCATACTGGA
 GAGAAGCCCTATGAATGTAGTAAGTGTAGAAAAGCCTTCAGTCACAAGGAAAAACTTATTAACATTATA
 AAATTCACAGTAGGGAGCAGTCTTACAATGTAATGAATGTGGTAAAGCTTTCATTAATAATGTCAAATCT
 CATTAGACATCAAAGAATTCATACTGGAGAGAAGCCCTATGCATGTAAGGAATGTGAGAAGTCTTCAGC
 CAGAAATCAAATCTTATTGATCATGAAAAAATTCATACTGGAGAGAAAACCTTATGAATGTAATGAGTGTG
 GAAAAGCATTACGCCAGAAGCAAAGCCTTATGCACATCAGAAAGTTCATACTGGGGAGAAAACCTTATGC
 ATGTAATGAATGTGGTAAAGCCTTCCCTCGAATGCATCCCTTGCTCTTCATATGAGAAGTCATACAGGA
 GAAAAACCTTATAAATGTGATAAATGTGGTAAAGCCTTCTCTCAGTTTTCCATGCTTATTATACATGTTA
 GAATTCATACAGGTGAAAAACCTATGAATGTAATGAGTGTGAAAAGCCTTCTCTCAAAGCTCAGCCCT
 TACTGTACATATGAGAAGTCACACTGGTGAGAAAACCTATGAATGTAAGGAATGCAGAAAAGCCTTCAGC
 CACAAGAAAAACTTCATTACACACCAGAAAATTCATACTAGAGAGAAAACCTTATGAGTGAATGAATGTG
 GGAAAAGCTTTTATACAGATGTCAAATCTTGTAGACACCAGAGAATTCATACTGGGGAAAAACCTATAT
 ATGTAAGGAATGTGGAAAAGCCTTAGCCAGAAATCAAATCTCATTGCTCATGAAAAATTCATTCTGGA
 GAGAAACCCTATGAATGCAATGAATGTGGTAAAGCCTTCAGCCAAAAGCAAACCTTCATTACACATCAA
 AAGTTCATACTGGAGAGAAAACCTTATGATTGAATGAATGTGGTAAAGCCTTCTCTCAAATTCATCCCT
 TACCCTTCATTTGAGAAGTCATACAGGGGAAAAGCCTTATGAATGTGATAAATGTGGTAAAGCCTTCTCT
 CAGTGCTCACTGCTTAATTTACATATGAGAAGTCACACAGGTGAGAAGCCCTATGTATGTAATGAATGTG
 GGAAAAGCCTTCTCTCAAAGAACTCCCTTATTGTGCACATGAGAGGCCATACAGGTGAAAAACCTATGA
 ATGTAATAAATGTGAAAAGCCTTCTCCAAAAGCTCATCCCTTACTATACATATACGAGGACATACAGGT
 GAGAAAACCTTCGACTGTAGTAAATGTGAAAAGCCTTCTCTCAAATTCATCTCTTACCCTTCATATGA
 GAAAACATACAGGTGAGAAGCCCTATCACTGTATTGAGTGTGGCAAGGCTTTCAGCCAAAAGTCCGACCT
 TGTTAGACACCAGAGAATTCATACTCAT

ACGCGTACGCGGCCGCTCGAGCAGAAAACCTCATCTCAGAAGAGGATCTGGCAGCAAATGATATCCTGGATT
 ACAAGGATGACGACGATAAGGTTTAA

Protein Sequence: >RC224370 representing NM_152484
 Red=Cloning site Green=Tags(s)

```
MTESQGTVTFKDV AIDFTQE EWKRLDPAQRKLYRNVML ENYNNLITVGYPF TKPDVIFKLEQEEEPWVME
EEVLR RHWQGEIWGVDEHQNKQDRLLRQVEVKFQKLTTEEKGNECQK KFANVPLNSDFPFSRHNL YEYD
LFGKCLEHNF DCHNNVKCLMRKEHCEYNEPVKSYGNSSSHFVITPFKCNHCGKGFNQTLDLIRHLRIHTG
EKPYECSNCRKAF SHKEKLIKHYK IHSREQSYK CNECGKAFIKMSNLIRHQRIHTGEKPYACEKEKSFS
QKSNLIDHEK IHTGEKPYECNECGKAFSQKSLIAHQKVHTGEKPYACNECGKAFPRIASLALHMSHTG
EKPYKCDKCGKAF SQFSMLIIHVRIHTGEKPYECNECGKAFSQSSALTVHMSHTGEKPYECKEKRKAFS
HKNFITHQKIHTREKPYECNECGKAFIQMSNLVRHQRIHTGEKPYICEKCGKAFSQKSNLIAHEKIHSG
EKPYECNECGKAF SQKQNFITHQKVHTGEKPYDCNECGKAFSQIASLTLHLRSHTGEKPYECDKCGKAFS
QCSLLNLHMSHTGEKPYVCNECGKAFSQRTSLIVHMRGHTGEKPYECNKCGKAFSQSSSLTIHIRGHTG
EKPFDCSKCGKAF SQISSLTLHMRKHTGEKPYHCIECGKAFSQKSHLVRHQRIHTH
```

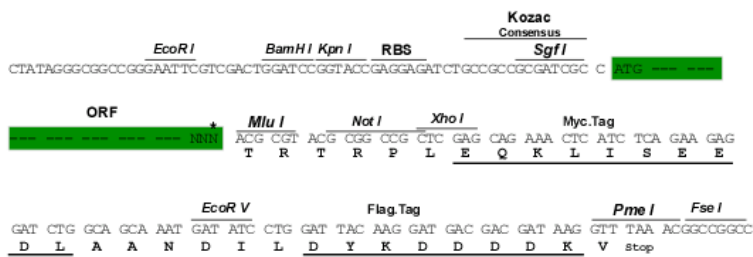
TRTRPLEQKLISEEDLAANDILDYKDDDDKV

Chromatograms: https://cdn.origene.com/chromatograms/mk8043_h01.zip

Restriction Sites: SgfI-MluI

Cloning Scheme:

Cloning sites used for ORF Shuttling:



* The last codon before the Stop codon of the ORF

ACCN: NM_152484

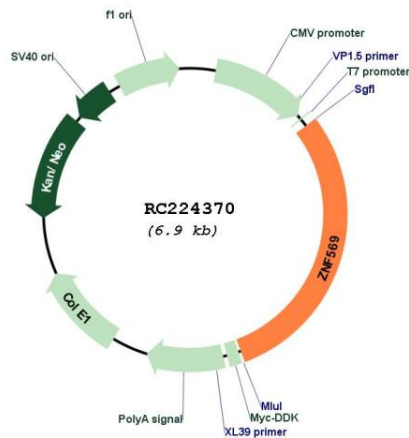
ORF Size: 2058 bp

OTI Disclaimer: The molecular sequence of this clone aligns with the gene accession number as a point of reference only. However, individual transcript sequences of the same gene can differ through naturally occurring variations (e.g. polymorphisms), each with its own valid existence. This clone is substantially in agreement with the reference, but a complete review of all prevailing variants is recommended prior to use. [More info](#)

OTI Annotation: This clone was engineered to express the complete ORF with an expression tag. Expression varies depending on the nature of the gene.

- Components:** The ORF clone is ion-exchange column purified and shipped in a 2D barcoded Matrix tube containing 10ug of transfection-ready, dried plasmid DNA (reconstitute with 100 ul of water).
- Reconstitution Method:**
1. Centrifuge at 5,000xg for 5min.
 2. Carefully open the tube and add 100ul of sterile water to dissolve the DNA.
 3. Close the tube and incubate for 10 minutes at room temperature.
 4. Briefly vortex the tube and then do a quick spin (less than 5000xg) to concentrate the liquid at the bottom.
 5. Store the suspended plasmid at -20°C. The DNA is stable for at least one year from date of shipping when stored at -20°C.
- RefSeq:** [NM_152484.3](#)
- RefSeq Size:** 4071 bp
- RefSeq ORF:** 2061 bp
- Locus ID:** 148266
- UniProt ID:** [Q5MCW4](#)
- Cytogenetics:** 19q13.12
- Protein Families:** Transcription Factors
- MW:** 79.4 kDa
- Gene Summary:** May be involved in transcriptional regulation.[UniProtKB/Swiss-Prot Function]

Product images:



Circular map for RC224370