

Product datasheet for **RC224369**

CCDC80 (NM_199512) Human Tagged ORF Clone

Product data:

Product Type:	Expression Plasmids
Product Name:	CCDC80 (NM_199512) Human Tagged ORF Clone
Tag:	Myc-DDK
Symbol:	CCDC80
Synonyms:	CL2; DRO1; LINC01279; okuribin; SSG1; URB
Mammalian Cell Selection:	Neomycin
Vector:	pCMV6-Entry (PS100001)
E. coli Selection:	Kanamycin (25 ug/mL)



[View online »](#)

ORF Nucleotide Sequence:

>RC224369 ORF sequence
 Red=Cloning site Blue=ORF Green=Tags(s)

TTTTGTAATACGACTCACTATAGGGCGGCCGGGAATTCGTCGACTGGATCCGGTACCGAGGAGATCTGCC
 GCC**CGCATCGCC**

ATGACATGGAGAATGGGACCCCGTTTCACTATGCTGTTGGCCATGTGGCTAGTGTGTGGATCAGAACCC
 ACCCCCATGCCACTATTAGAGGCAGCCACGGAGGACGGAAAGTGCTTTGGTTTCTCCGGACAGCAGTAG
 GCCAGCTCGGTTTCTGAGGCACACTGGGAGGTCTCGCGGAATTGAGAGATCCACTCTGGAGGAACCAAA
 CTTCCAGCTCTCCAGAGAAGGAGGAGTGTGCCGTGTTGAGACTAGCTCGCCCAACAGAGCCGCCAGCC
 GCTCGGACATCAATGGGGCCCGGTGAGACCTGAGCAAAGACCAGCAGCCAGGGGCTCTCCGCGTGAGAT
 GATCAGAGATGAGGGTCTCAGCTCGGTCAAGAATGTTGCGTTTCCCTTCGGGTCCAGCTCTCCCAAC
 ATCCTTGCCAGCTTTCAGGGAAGAACAGAGTATGGGTCACTCAGCCCTCATGCCTCGGAAGGCTACT
 ACCGCCTCATGATGAGCCTGCTGAAGGACGATGTGTACTGTGAGCTGGCGGAGAGGCACATCCAACAGAT
 TGTGCTTTCACCAGGCAGGTGAGGAAGGAGCAAGGTGAGAAGGATCACCAGCGAGGGCCAGATCCTG
 GAGCAGCCCTTGACCCTAGCCTCATCCCTAAGCTGATGAGCTTCTGAAGCTGGAGAAGGGCAAGTTG
 GCATGGTGTGCTGAAGAAGACGCTGCAGGTGGAGGAGCGCTATCCATATCCCGTTAGGCTGGAAGCCAT
 GTACGAGGTATCGACCAAGGCCCATCCGTAGGATCGAGAAGATCAGGCAGAAGGGCTTTGTCCAGAAA
 TGTAAGGCCTCTGGTGTAGAGGGCCAGGTGGTGGCGGAGGGGAATGACGGTGGAGGGGAGCAGGAAGGC
 CAAGCTGGGCAGCGAGAAGAAGAAAGAGGACCAAGGAGAGCACAAGTCCCACCAACCAGAGAGAGTCCG
 GGTGAAGTCTGAGAAAAGTGGCCGCACTGCACCAGCTTTCGCCAACCTCCCTCAACCCAGAGCC
 ACCACCTTCTCCTGCCAGCCACAACAGTACTCGGTCCACGTCCCGGGCGGTAACAGTTGTGCAA
 GACCTATGACCACCACTGCCTTTCACCACGCGAGAGCCCTGGACCCCTCACCTCCACAGCCCC
 TACAACCACTGAGGTGATCACTGCCAGGAGCCCTCAGTTTCAGAGAATCTTACCCTCCATCCCGGAAG
 GATCAGCACAGGAGAGGCCACAGACAACCAGGAGGCCAGCAAGGCCACCAGCTTGAGAGCTTACAA
 ATGCCCTCCCACCACCTCTCAGAACCAGCACAAGGGCTGCTGGCCAGGCCGTTTCCGGGACAACCG
 CATGGACAGGCGGAACATGGCCACCGAGACCAATGTGGTCCAGGTCTCCCAAGCCAGCAAAGGAG
 AAACCTCCAAAAGAAGGCCAGGACAAAATTCTTAGTAAAGATGAGGAGAAGTATGACCTCAGCC
 GGCCTACTGCCTCTCAGCTGGAGGACGAGCTGCAGGTGGGAATGTTCCCTTAAAAAGCAAAGGAGTC
 TAAAAAGCATGAAAAGCTTGAGAAACCAGAGAAGGAGAAGAAAAAAGATGAAGATGAGAACGCAGAC
 AAGTTACTTAAGAGTAAAAGCAATGAAGAAGTCTGAGAAAAAGAGCAAGCAAGAGAAAGAGAAGAGCA
 AGAAGAAAAAGGAGGTAAAACAGAACAGGATGGCTATCAGAAACCCACCAACAAACACTTCACGCAGAG
 TCCCAAGAAGTCAAGTGGCCGACCTGCTGGGGTCTTTGAAGGCAAACGAAGACTCCTTCTGATCACTGCT
 CCCAAGGCTGAGAACAATATGTATGTGCAACAACGTGATGAATATCTGGAAAGTTTCTGCAAGATGGCTA
 CCAGGAAAATCTCTGTGATCACCATCTTCGGCCGTGCAACAACAGCACCATGAAAATCGACCACCTTCA
 GCTAGATAATGAGAAGCCATGCGAGTGGTGGATGATGAAGACTTGGTAGACCAGCGTCTCATCAGCGAG
 CTGAGGAAAGAGTACGGAATGACCTACAATGACTTCTTCAATGGTGTAAACAGATGTGGATCTGAGAGTCA
 AGCAATACTATGAGGTACCAATAACAATGAAGTCTGTGTTGATCTGATCGATACTTCCAGTCCCGAAT
 CAAAGATATGGAGAAGCAGAAGAAGGAGGCATTGTTTGAAGAGGACAAAAAGCAGTCCCTGGAGAAC
 TTCTATCCAGGTTCCGGTGGAGGAGGAGTTGCTGGTGTCTCTGCTCCTAACGATGAAGACTGGGCCT
 ATTCACAGCAGCTCTCTGCCCTCAGTGGTCAGGCGTGCAATTTGGTCTGCGCCACATAACCATTCTGAA
 GCTTTTAGGCGTTGGAGAGGAAGTTGGGGAGTGTAGAACTGTTCCCAATTAATGGGAGCTCTGTTGTT
 GAGCGAGAAGACGTACCAGCCATTTGGTGAAGACATTCGTAATATTTTCAAGTGAAGCCGGAGTACT
 TCTCCATGCTTCTAGTCGAAAAGACGGAAATGTCAAATCCTGGTATCCTTCCCAATGTGGTCCATGGT
 GATTGTGTACGATTTAATTGATTCGATGCAACTTCGGAGACAGGAAATGGCGATTACGAGTCACTGGG
 ATGCGCTGCCAGAAGATGAGTATGCAGGCTATGGTTACCATAGTTACCACCAAGGATACCAGGATGGT
 ACCAGGATGACTACCGTCATCATGAGAGTTATCACCATGGATACCCTAC

ACGCGTACGCGGCCGCTCGAGCAGAAACTCATCTCAGAAGAGGATCTGGCAGCAAATGATATCCTGGATT
 ACAAGGATGACGACGATAAGGTTTAA

Protein Sequence: >RC224369 protein sequence
 Red=Cloning site Green=Tags(s)

```

MTWRMGPRFTMLLAMWLVCGSEPHPHATIRGSHGGRKVPVSPDSSRPARFLRHTGRSRGIERSTLEEPN
LQPLQRRRSVPVLRARPTPEPPARSDINGAAVRPEQRPAARGSPREIRDEGSSARSRLRFPSGSSPN
ILASFAGKNRVVVISAPHASEGYRMLMSLLKDDVYCELAERHIQQIVLFHQAGEEGKVRRITSEGQIL
EQPLDPSLIPKLMFSLKLEKGGKGMVLLKKTQVEERYYPVRLLEAMYEVIDQGPVIRRIEKIRQKGFVQK
CKASGVEGQVVAEGNDGGGAGRPSLGSEKKKEDPRRAQVPPTRESRVKVLRLKLAATAPALPQPPSTPRA
TTLPPAPATTVTRSTSRAVTVAAARPMTTTAFPTTQRPWTPSPSHRPTTTTEVITARRPSVSNLYPPSRK
DQHRERPQTTRRPSKATSLESFTNAPPTTISEPSTRAAGPGRFRDNMRDRREHGRDPNVVPGPPKPAKE
KPPKKAQDKILSNEYEEKYDLRPTASQLEDELQVGNVPLKKAKEKSKHEKLEKPEKEKMKMKNENAD
KLLKSEKQMKKSEKSKQEKEKSKKKKGGKTEQDGYQKPTNKHFTQSPKKSVDLLGSFEGKRLLLLITA
PKAENNMVYVQRDEYLESFKMATRKISVITIFGPVNNSTMKIDHFQLDNEKPMRVVDEDLVDQRLISE
LRKEYGMTYNDFFMVLTDVLRVKQYVEVITMKSVDLIDTFQSRIDMEKQKKEGIVCKEDKKQSLN
FLSRFRWRRRLVISAPNDEDWAYSQQLSALSGQACNFGLRHITILKLLGVGEEVGGVLELFPINGSSV
EREDVPAHLVKDIRNYFQVSPEYFMSLLVGKDGNVKSWYSPMWSMVIVYDLIDSMQLRRQEMAIQQSLG
MRCPEDEYAGYGYHSYHQYQDGYQDDYRHESYHHGYPY
  
```

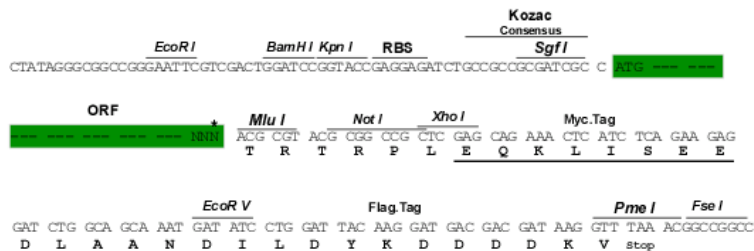
TRTRPLEQKLISEEDLAANDILDYKDDDDKV

Chromatograms: https://cdn.origene.com/chromatograms/mk6445_g10.zip

Restriction Sites: SgfI-MluI

Cloning Scheme:

Cloning sites used for ORF Shuttling:



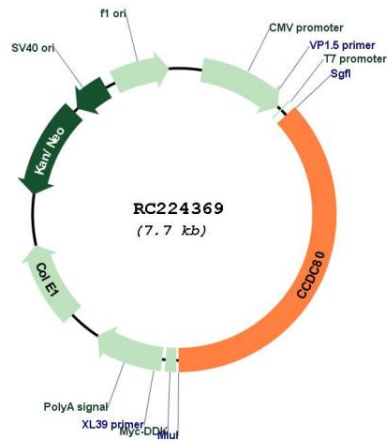
* The last codon before the Stop codon of the ORF

ACCN: NM_199512

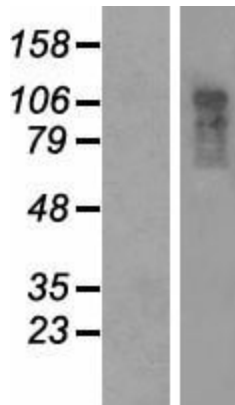
ORF Size: 2850 bp

OTI Disclaimer:	The molecular sequence of this clone aligns with the gene accession number as a point of reference only. However, individual transcript sequences of the same gene can differ through naturally occurring variations (e.g. polymorphisms), each with its own valid existence. This clone is substantially in agreement with the reference, but a complete review of all prevailing variants is recommended prior to use. More info
OTI Annotation:	This clone was engineered to express the complete ORF with an expression tag. Expression varies depending on the nature of the gene.
Components:	The ORF clone is ion-exchange column purified and shipped in a 2D barcoded Matrix tube containing 10ug of transfection-ready, dried plasmid DNA (reconstitute with 100 ul of water).
Reconstitution Method:	<ol style="list-style-type: none">1. Centrifuge at 5,000xg for 5min.2. Carefully open the tube and add 100ul of sterile water to dissolve the DNA.3. Close the tube and incubate for 10 minutes at room temperature.4. Briefly vortex the tube and then do a quick spin (less than 5000xg) to concentrate the liquid at the bottom.5. Store the suspended plasmid at -20°C. The DNA is stable for at least one year from date of shipping when stored at -20°C.
RefSeq:	NM_199512.3
RefSeq Size:	4115 bp
RefSeq ORF:	2853 bp
Locus ID:	151887
UniProt ID:	Q76M96
Cytogenetics:	3q13.2
MW:	108.2 kDa
Gene Summary:	Promotes cell adhesion and matrix assembly.[UniProtKB/Swiss-Prot Function]

Product images:



Circular map for RC224369



Western blot validation of overexpression lysate (Cat# [LY404584]) using anti-DDK antibody (Cat# [TA50011-100]). Left: Cell lysates from untransfected HEK293T cells; Right: Cell lysates from HEK293T cells transfected with RC224369 using transfection reagent MegaTran 2.0 (Cat# [TT210002]).