

## Product datasheet for RC224366

### EED (NM\_152991) Human Tagged ORF Clone

#### Product data:

|                           |                                                                             |
|---------------------------|-----------------------------------------------------------------------------|
| Product Type:             | Expression Plasmids                                                         |
| Product Name:             | EED (NM_152991) Human Tagged ORF Clone                                      |
| Tag:                      | Myc-DDK                                                                     |
| Symbol:                   | EED                                                                         |
| Synonyms:                 | COGIS; HEED; WAIT1                                                          |
| Mammalian Cell Selection: | Neomycin                                                                    |
| Vector:                   | pCMV6-Entry (PS100001)                                                      |
| E. coli Selection:        | Kanamycin (25 ug/mL)                                                        |
| ORF Nucleotide Sequence:  | >RC224366 representing NM_152991<br>Red=Cloning site Blue=ORF Green=Tags(s) |

TTTTGTAATACGACTCACTATAGGGCGCCGGGAATTCGTCGACTGGATCCGGTACCGAGGAGATCTGCC  
GCC**CGATCGCC**

ATGTCGAGAGGGAAAGTGTGCGACTGCGCCGGCGGGAACAGACATGCCTGCGGCCAAGAAGCAGAAGCTGA  
GCAGTGACGAGAACAGCAATCCAGACCTCTCTGGAGACGAGAATGATGACGCTGTGAGTATAGAAAGTGG  
TACAAACTGAACGCCCTGATACCTACAAACAGCCAAATGCACCTGGAAGGAAAAGTTGGGAAAAG  
GGAAAATGGAAGTCAAAGAAATGCAAAATATTCTTTCAAATGTGTAATAGTCTCAAGGAAGATCATAACC  
AACCATTGTTGGAGTTCAGTTAACTGGCACAGTAAAGAAGGAGATCCATTAGTGTGCAACTGTAGG  
AAGCAACAGAGTTACCTTGTATGAATGTCATTCACAAGGAGAAAATCCGGTGTGCAATCTTACGTGGAT  
GCTGATGCTGATGAAAACTTTTACACTGTGCATGGACCTATGATAGCAATACGAGCCATCCTCTGCTGG  
CTGTAGCTGGATCTAGAGGCATAATTAGGATAATAAATCCTATAACAATGCAGTGTATAAAGCACTATGT  
TGGCCATGGAAATGCTATCAATGAGCTGAAATTCATCCAAGAGATCCAATCTTCTCCTGTGAGTAAAGT  
AAAGATCATGCTTACGATTATGGAATATCCAGACGGACACTCTGGTGGCAATATTTGGAGGCGTAGAAG  
GGCACAGAGATGAAGTCTAAGTGTGATTATGATCTTTGGGTGAAAAAATAATGTCCTGTGGTATGGA  
TCATTCTCTTAACTTTGGAGGATCAATTCAAAGAGAATGATGAATGCAATTAAGGAATCTTATGATTAT  
AATCCAAATAAACTAACAGGCCATTTATTTCTCAGAAAATCCATTTTCTGATTTTCTACCAGAGACA  
TACATAGGAATTATGTTGATTGTGCGATGGTTAGCGATTTGATACTTTCTAAGTCTTGTGAAAATGC  
CATTGTGTGCTGAAAACCTGGCAAGATGGAAGATGATATAGATAAAATTAACCCAGTGAATCTAATGTG  
ACTATTCTGGGCGATTTGATTACAGCCAGTGTGACATTTGGTACATGAGGTTTTCTATGGATTTCTGGC  
AAAAGATGCTTGCAATGGCAATCAAGTTGGCAAATTTATGTTGGGATTTAGAAGTAGAAGATCCTCA  
TAAAGCCAAG

**ACGCGT**ACGCGGCCGCTCGAGCAGAACTCATCTCAGAAGAGGATCTGGCAGCAATGATATCCTGGATT  
ACAAGGATGACGACGATAAGGTTTAA



[View online >](#)

**Protein Sequence:** >RC224366 representing NM\_152991  
Red=Cloning site Green=Tags(s)

MSEREVSTAPAGTDMPAAKKQKLSSDENSNDLSGDENDDAVSIESGTNTERPDTPNTPNAPGRKSWGK  
 GKWKSKKCKYSFKCVNSLKEDHNQPLFGVQFNWHSKEGDPLVFATVGSNRVTLYECHSQGEIRLLQSYVD  
 ADADENFYTCAWTYDSNTSHPLLAVAGSRGIIRIINPITMQCIKHVYVGHGNAINELKFHPRDPNLLLSVS  
 KDHALRLWNIQDTLVAIFGGVEGHRDEVLSADYDLLGEKIMSCGMDHSLKLRINSKRMMNAIKESYDY  
 NPNKTNRPFISQKIHFPDFSTRDIHRNYVDCVRWLGDLILSKSCENAIVCWKPGKMEDDIDKIKPSESNV  
 TILGRFDYSQCDIWMRF SMDFWQKMLALGNQVGKLYVWDLEVEDPHKAK

TRTRPLEQKLISEEDLAANDILDYKDDDDKV

**Chromatograms:** [https://cdn.origene.com/chromatograms/mg2855\\_c01.zip](https://cdn.origene.com/chromatograms/mg2855_c01.zip)

**Restriction Sites:** SgfI-MluI

**Cloning Scheme:**



\* The last codon before the Stop codon of the ORF

**ACCN:** NM\_152991

**ORF Size:** 1200 bp

**OTI Disclaimer:** The molecular sequence of this clone aligns with the gene accession number as a point of reference only. However, individual transcript sequences of the same gene can differ through naturally occurring variations (e.g. polymorphisms), each with its own valid existence. This clone is substantially in agreement with the reference, but a complete review of all prevailing variants is recommended prior to use. [More info](#)

**OTI Annotation:** This clone was engineered to express the complete ORF with an expression tag. Expression varies depending on the nature of the gene.

**Components:** The ORF clone is ion-exchange column purified and shipped in a 2D barcoded Matrix tube containing 10ug of transfection-ready, dried plasmid DNA (reconstitute with 100 ul of water).

**Reconstitution Method:**

1. Centrifuge at 5,000xg for 5min.
2. Carefully open the tube and add 100ul of sterile water to dissolve the DNA.
3. Close the tube and incubate for 10 minutes at room temperature.
4. Briefly vortex the tube and then do a quick spin (less than 5000xg) to concentrate the liquid at the bottom.
5. Store the suspended plasmid at -20°C. The DNA is stable for at least one year from date of shipping when stored at -20°C.

**RefSeq:** [NM\\_152991.2](#)

**RefSeq Size:** 2413 bp

**RefSeq ORF:** 1203 bp

**Locus ID:** 8726

**Cytogenetics:** 11q14.2

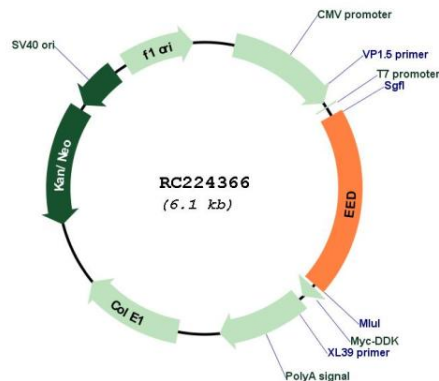
**Domains:** WD40

**Protein Families:** Druggable Genome, Transcription Factors

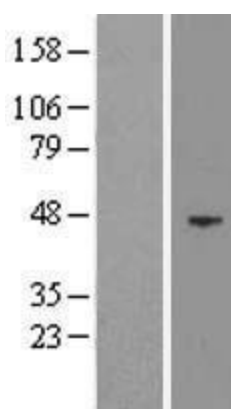
**MW:** 45.3 kDa

**Gene Summary:** This gene encodes a member of the Polycomb-group (PcG) family. PcG family members form multimeric protein complexes, which are involved in maintaining the transcriptional repressive state of genes over successive cell generations. This protein interacts with enhancer of zeste 2, the cytoplasmic tail of integrin beta7, immunodeficiency virus type 1 (HIV-1) MA protein, and histone deacetylase proteins. This protein mediates repression of gene activity through histone deacetylation, and may act as a specific regulator of integrin function. Two transcript variants encoding distinct isoforms have been identified for this gene. [provided by RefSeq, Jul 2008]

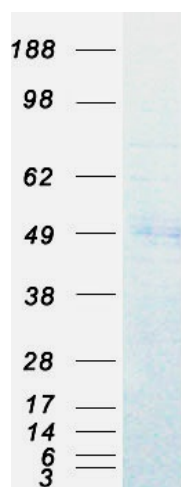
### Product images:



Circular map for RC224366



Western blot validation of overexpression lysate (Cat# [LY407233]) using anti-DDK antibody (Cat# [TA50011-100]). Left: Cell lysates from untransfected HEK293T cells; Right: Cell lysates from HEK293T cells transfected with RC224366 using transfection reagent MegaTran 2.0 (Cat# [TT210002]).



Coomassie blue staining of purified EED protein (Cat# [TP324366]). The protein was produced from HEK293T cells transfected with EED cDNA clone (Cat# RC224366) using MegaTran 2.0 (Cat# [TT210002]).