

## Product datasheet for **RC224365**

### **PAXBP1 (NM\_016631) Human Tagged ORF Clone**

#### **Product data:**

Product Type:	Expression Plasmids
Product Name:	PAXBP1 (NM_016631) Human Tagged ORF Clone
Tag:	Myc-DDK
Symbol:	PAXBP1
Synonyms:	BM020; C21orf66; FSAP105; GCFC; GCFC1
Mammalian Cell Selection:	Neomycin
Vector:	pCMV6-Entry (PS100001)
E. coli Selection:	Kanamycin (25 ug/mL)



[View online »](#)

**ORF Nucleotide Sequence:**

>RC224365 representing NM\_016631  
 Red=Cloning site Blue=ORF Green=Tags(s)

TTTTGTAATACGACTCACTATAGGGCGGCCGGGAATTCGTCGACTGGATCCGGTACCGAGGAGATCTGCC  
 GCC**CGCATCGCC**

ATGTTCCGAAAGGCCCGCGGGTGAACGTGCGCAAGCGGAACGACTCCGAAGAGGAAGAGCGGGAACCGG  
 ATGAGGAGCAGGAGCCGCGCCGTTGTTGCCCGCCCGGGCACGGGCGAAGAGGCGGGCCCGGTGGCGG  
 CGACAGGGCCCTGGCGGGGAGTCGCTGCTGGGCCCGGGCCGTCGCGCCTTCCGCGCTGACCCCGGGC  
 CTCGGGGCTGAGGCCGGGGCGGCTTCCCGCGGCGCGGAGCCCGCAACGGGCTGAAGCCGCGCAAGA  
 GGCCTCGGAGAACAAAGAGGTGCCCGGGCCAGCCTGCTCAGCTTCCAGGACGAGGAGGAAGAAAATGA  
 AGAAGTTTTCAAAGTGAAGAAATCAAGTTATAGCAAAAAGATAGTAAAATTGCTCAAGAAGGAATATAAA  
 GAAGATCTTGAAAATCGAAGATTAAGACAGAACTCAACTCATCAGCTGAAAGTGAACAACCTTTGGACA  
 AAACAGGACATGTTAAGGATACAAATCAAGAAGATGGAGTTATCATCAGTGAACATGGTGAAGATGAAAT  
 GGATATGGAAGTGAAAAAGAGGAAGAAAAGCCAAAGACTGGTGGAGCTTTTCAAATGCTTTATCTTCA  
 TTGAATGTTCTTCGTCCAGGAGAAAATCCAGATGCAGCTTTTATACATGCTGCAAGGAAAAAGCGCCAAA  
 TGGCCCGAGAATTGGGAGATTTCACTCCTCATGATAATGAGCCTGGTAAAGGCCGCTTGTAGAGAAGA  
 TGAGAATGATGCCAGTGATGATGAAGATGACGATGAGAAACGCCGGATAGTTTTTCTGTGAAAGAAAAG  
 TCACAAAGACAAAAAATTGCTGAGGAAATAGGAATTGAGGGGAGTGATGATGCTTTAGTAACTGGAG  
 AACAGGATGAAGAGCTCAGCCGATGGGAACAGGAGCAGATAAGGAAAGGAATTAATATCCCTCAGTTCA  
 AGCCAGTCAACCCGAGAAAGTGAATATGTAACAGCAACTTACCAGACAATGCCTTACGGCTCATCC  
 TATGGCATTCTTATAGTTATACGGCCTATGGATCATCAGATGCCAAATCTCAAAAAACAGATAATACAG  
 TCCCTTTCAAACCTCCAGTAATGAGATGACTCCCGTTACTATTGATTTGGTAAAGAAACAGCTTAAAGA  
 CAGGTTGGACTCCATGAAAGAATTGCACAAAACAAATCGACAGCAGCATGAGAAAACATCTGCAAAGCCGA  
 GTGGACTTACCAGGGCTATTGAAAGATTAGAAGGCTTCTGGGGGATTGGTGAACGGTATAAATTTT  
 TGCAAGAAATGCGAGGGTATGTCCAAGACTTGCTTGTGAGTGTTCAGTGAAGAGGTGCCACTGATTAATGA  
 ACTTGAATCAGCAATACATCAGCTGTACAAACAGCGAGCTTCCCGCCTTGTCAAAGACGACAAGATGAT  
 ATTAAGATGAATCTTCGGAGTTTCAAGCCATTCAAACAAGCTCTGATGGCACCAATCTTGACTCCT  
 TTGGACGCGATCGGGCACTGTATCAAGAGCATGCAAAACGTCGCATTGCAGAGCGGGAGGCCAGGAGGAC  
 TCGTCGTAGACAAGCCAGAGAACAACCCGGTAAGATGGCAGATCACCTTGAAGGCCTTCCAGTGATGAT  
 GAAGAACTTCTACAGATATTACTAATTTCAATCTGAAAAAGATCGAATTTCAAAGAATCCGGCAAG  
 TTTTTGAAGATGTCCTTGAAAGTTCTATTCAATTGACTGTATTAATCACAGTTTGAAGCATGGCGTTC  
 AAAATACTACACATCCTCAAAAGATGCTTACATTGGCCTTTGTTTGCCAAAATTATTCAACCCCTCATA  
 CGACTTACGCTCCTCACTTGGACTCCTCTTGGAGCAAAATGTCGTGACTTTGAGAATATGCTGTGGTTTG  
 AATCTTTGCTGTTTTATGGTTGTGAAGAACGAGAGCAAGAAAAAGATGATGTAGATGTTGCCCTACTACC  
 TACCATTGTGAAAAAGGTGATTCTTCTAACTAACAGTGATAGCTGAAAATATGTGGGACCCTTTTTCT  
 ACAACACAGACTTCAAGAATGGTGGGAATTACACTAAAATTAATCAATGGATATCCTTCAAGTGTGAATG  
 CAGAAAAATAAATAACACAGGTATACCTAAAGGCACTTTTATTGAGAATGAGAAGAACTTAGATGATGA  
 TGTATTTATGCCCTTATATCCAAAAATGTCTTAGAAAAATAAAATTTCTGGGCCTTACTTGTTTTTTCAA  
 CGACAGTTTTGGTCTTCAGTTAAGCTGTTAGGCAATTTTCTTCAAGTGGTATGGCATTCTTCAAATAAAA  
 CTCTGCAAGATTATCAATAGATGGTTTATTAATCGATATATTCTCATGGCTTTTCCAGAAATCAGAATA  
 TGGAGATGACAGCATCAAAAAAGCCAAAATGTAATCAATTGTTTCCCAAAACAATGTTTCATGAATCTG  
 AAAGGAGAAAGGACTATTTCTCAGTTAGAAAATTTTGGCGATACCTTGTACACTTAGCGGATACAATTT  
 ATAGAAATAGTATCGGGTGTCTGATGTGAAAAAAGAAATGCAAGGGAAAACATAAAACAGATAGTAAA  
 ACTCCTTGCAAGTGTTCGAGCTTTGGATCATGCTATGTCTGTGCAAGTGACCACAATGTGAAAGAATTT  
 AAGTCTTTGATCGAAGGAAAA

**ACGCGT**ACGCGGCCGCTCGAGCAGAAACTCATCTCAGAAGAGGATCTGGCAGCAAATGATATCCTGGATT  
 ACAAGGATGACGACGATAAGGTTTAA

**Protein Sequence:** >RC224365 representing NM\_016631  
 Red=Cloning site Green=Tags(s)

MFRKARRVNRKRNDSEEEERERDEEQEPPPLPPPPTGEEAGPGGGDRAPGGESLLGPGSPSSALTPG  
 LGAEAGGFPGGAEPGNLKPKRPRENKEVPRASLLSFQDEEENEVEFKVKKSSYSKKIVKLLKKEYK  
 EDLEKSKIKTELNSSAESEQLDKTGHVKDTNQEDGVIISEHGEDEMDMESEKEEEKPKTGGAFSNALSS  
 LNVLRPGEIPDAAFIIHAARKKRQMARELGDFTPHDNEPGKGRVLVREDENDASDDEDDDEKRRIVFSVKEK  
 SQRQKIAEEIGIEGSDDDALVTGEQDEELSRWEQEIRKGINIPQVQASQPAEVNMYQNTYQTMPYGSS  
 YGIPYSYAYGSSDAKSQKTNTVPFKTPSNEMTPVTIDLVKKQLKDRDLSMKELHKTNRQHEKHLQSR  
 VDSTRAIERLEGSSGGIGERYKFLQEMRGYVQDLLECFSEKVPLINELESIAHQLYKQASRLVQRRQDD  
 IKDESSEFSSHSNKALMAPNLDSFGRDRALYQEHAKRRIAEREARRRRRQAREQTGKMADHLEGLSSDD  
 EETSTDITNFNLEKDRISKEGKVFEDVLESFYSDICIKSQFEAWRSKYYSYKDAYIGLCLPKLFNPLI  
 RLQLLTWTPLEAKCRDFENMLWFESLLFYGCEEREQEKDDVDVALLPTIVEKVILPKLTVIAENMWDPF  
 TTQTSRMVGITLKLINGYPSVVAENKNTQVYLKALLLRMRRLDDDFMPLYPKNVLENKNSGPLYFFQ  
 RQFWSVKLLGNFLQWYGFISNKTQLQELSIDGLLNRYILMAFQNSEYGDSSIKKAQNVINCFFPKQWFMNL  
 KGERTISQLENFCRYLVHLADTIYRNSIGCSDVKEKRNARENKQIVKLLASVRALDHMSVSDHNKVEK  
 KSLIEGK

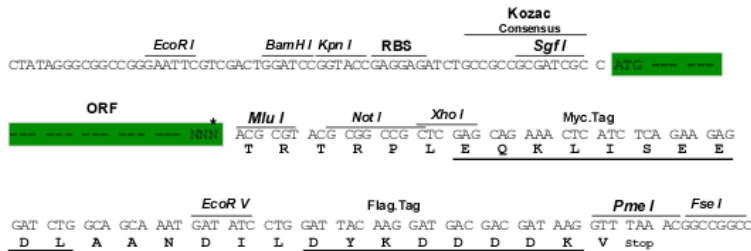
TRTRPLEQKLISEEDLAANDILDYKDDDDKV

**Chromatograms:** [https://cdn.origene.com/chromatograms/mk8043\\_h03.zip](https://cdn.origene.com/chromatograms/mk8043_h03.zip)

**Restriction Sites:** SgfI-MluI

**Cloning Scheme:**

Cloning sites used for ORF Shuttling:



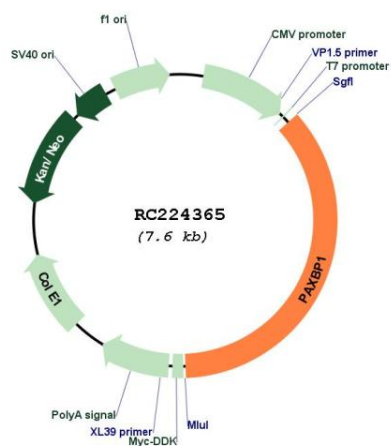
\* The last codon before the Stop codon of the ORF

**ACCN:** NM\_016631

**ORF Size:** 2751 bp

<b>OTI Disclaimer:</b>	The molecular sequence of this clone aligns with the gene accession number as a point of reference only. However, individual transcript sequences of the same gene can differ through naturally occurring variations (e.g. polymorphisms), each with its own valid existence. This clone is substantially in agreement with the reference, but a complete review of all prevailing variants is recommended prior to use. <a href="#">More info</a>
<b>OTI Annotation:</b>	This clone was engineered to express the complete ORF with an expression tag. Expression varies depending on the nature of the gene.
<b>Components:</b>	The ORF clone is ion-exchange column purified and shipped in a 2D barcoded Matrix tube containing 10ug of transfection-ready, dried plasmid DNA (reconstitute with 100 ul of water).
<b>Reconstitution Method:</b>	<ol style="list-style-type: none"><li>1. Centrifuge at 5,000xg for 5min.</li><li>2. Carefully open the tube and add 100ul of sterile water to dissolve the DNA.</li><li>3. Close the tube and incubate for 10 minutes at room temperature.</li><li>4. Briefly vortex the tube and then do a quick spin (less than 5000xg) to concentrate the liquid at the bottom.</li><li>5. Store the suspended plasmid at -20°C. The DNA is stable for at least one year from date of shipping when stored at -20°C.</li></ol>
<b>RefSeq:</b>	<a href="#">NM_016631.4</a>
<b>RefSeq Size:</b>	2903 bp
<b>RefSeq ORF:</b>	2754 bp
<b>Locus ID:</b>	94104
<b>UniProt ID:</b>	<a href="#">Q9Y5B6</a>
<b>Cytogenetics:</b>	21q22.11
<b>Protein Families:</b>	Transcription Factors
<b>MW:</b>	104.6 kDa
<b>Gene Summary:</b>	This gene encodes a protein that may bind to GC-rich DNA sequences, which suggests its involvement in the regulation of transcription. Alternative splicing of this gene results in multiple transcript variants. [provided by RefSeq, Jun 2009]

Product images:



Circular map for RC224365