

Product datasheet for RC224364

PRRG2 (NM_000951) Human Tagged ORF Clone

Product data:

Product Type: Expression Plasmids
Product Name: PRRG2 (NM_000951) Human Tagged ORF Clone
Tag: Myc-DDK
Symbol: PRRG2
Synonyms: PRGP2
Mammalian Cell Selection: Neomycin
Vector: pCMV6-Entry (PS100001)
E. coli Selection: Kanamycin (25 ug/mL)
ORF Nucleotide Sequence: >RC224364 representing NM_000951
 Red=Cloning site Blue=ORF Green=Tags(s)

TTTTGTAATACGACTCACTATAGGGCGGCCGGAATTCGTCGACTGGATCCGGTACCGAGGAGATCTGCC
 GCC**CGATCGCC**

ATGAGGGGCCACCCCTCTGCTGCTGCTATATATGGCATTAAACCACCTGCCTGGATACTTCACCCAGTG
 AGGAGACAGACCAAGAAGTCTTCTGGGTCCCCAGAGGCCAGAGCTTCTGAGTAGCCATACCCGGAT
 TCCAAGAGCCAACCACTGGGACCTGGAGCTGCTCACACCAGGGAACCTGGAACGGGAGTGTCTGGAAGAG
 AGGTGTTCTGGGAAGAGGCCAGGGAGTATTTGAGGACAACACTCTCACGGAGCGCTTTTGGGAGAGCT
 ACATCTACAATGGCAAAGGAGGGCGTGGACGAGTGGATGTGCCAGCCTGGCTGTGGGGCTGACAGGTGG
 CATCTGCTCATTGTCTGGCCGGCCTGGGAGCCTTTTGGTATCTGCGCTGGCGACAGCACCAGGCCAG
 CAGCCCTGTCCCAAGAGGCCGGGCTCATTAGCCCTCTGAGTCCCTTTGAACCCTCTGGGCCACCCAGCG
 CCCTGCCTCCACCCCAACCCCAACCCCAAGGCCTCCCACTATGAGCAGGCGCTGGCAGCCTCTGGGGT
 ACACGACGCACCTCCACCCCTACACCAGCCTCAGGAGGCTCAC

ACGCGTACGCGGCCGCTCGAGCAGAACTCATCTCAGAAGAGGATCTGGCAGCAAATGATATCCTGGATT
 ACAAGGATGACGACGATAAGGTTTAA

Protein Sequence: >RC224364 representing NM_000951
 Red=Cloning site Green=Tags(s)

MRGHPSLLLLYMALTTCLDTPSEETDQEVFLGPPEAQSFSSHTRIPRANHWDLELLTPGNLERECLEE
 RCSWEEAREYFEDNTLTERFWESYIYNGKGRGRVDVASLAVGLTGGILLIVLAGLGAFWYLRWRQHRGQ
 QPCPQEAGLISPLSPLNPLGPPTPLPPPPPPPPGLPTYEQALAASGVHDAPPPPYTSLRRPH

TRTRPLEQKLISEEDLAANDILDYKDDDDKV

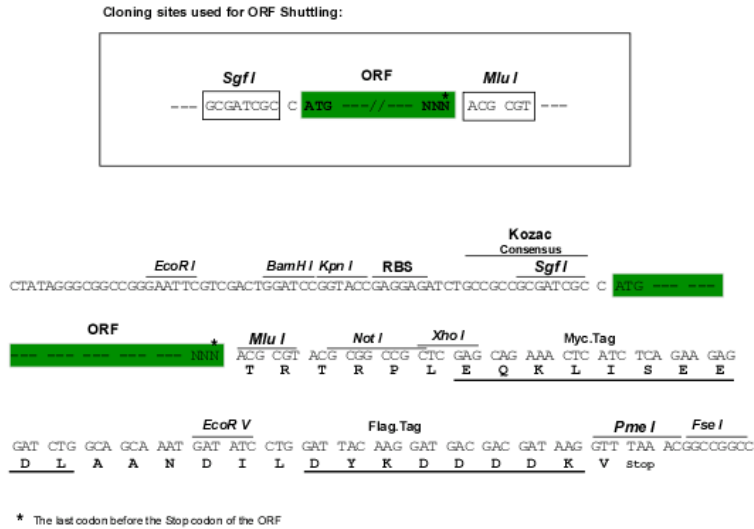


[View online »](#)

Chromatograms: https://cdn.origene.com/chromatograms/mg3026_g05.zip

Restriction Sites: SgfI-MluI

Cloning Scheme:



ACCN: NM_000951

ORF Size: 606 bp

OTI Disclaimer: The molecular sequence of this clone aligns with the gene accession number as a point of reference only. However, individual transcript sequences of the same gene can differ through naturally occurring variations (e.g. polymorphisms), each with its own valid existence. This clone is substantially in agreement with the reference, but a complete review of all prevailing variants is recommended prior to use. [More info](#)

OTI Annotation: This clone was engineered to express the complete ORF with an expression tag. Expression varies depending on the nature of the gene.

Components: The ORF clone is ion-exchange column purified and shipped in a 2D barcoded Matrix tube containing 10ug of transfection-ready, dried plasmid DNA (reconstitute with 100 ul of water).

Reconstitution Method:

1. Centrifuge at 5,000xg for 5min.
2. Carefully open the tube and add 100ul of sterile water to dissolve the DNA.
3. Close the tube and incubate for 10 minutes at room temperature.
4. Briefly vortex the tube and then do a quick spin (less than 5000xg) to concentrate the liquid at the bottom.
5. Store the suspended plasmid at -20°C. The DNA is stable for at least one year from date of shipping when stored at -20°C.

Note: Plasmids are not sterile. For experiments where strict sterility is required, filtration with 0.22um filter is required.

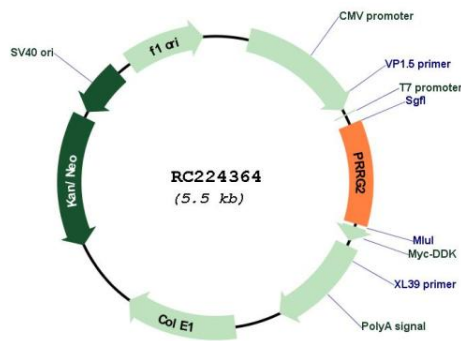
RefSeq: [NM_000951.3](#)

RefSeq Size: 1167 bp

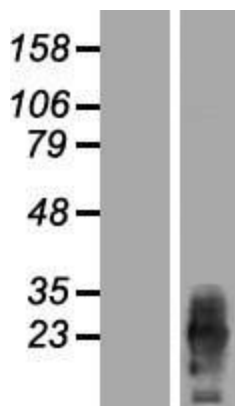
RefSeq ORF: 609 bp
 Locus ID: 5639
 UniProt ID: [O14669](#)
 Cytogenetics: 19q13.33
 Protein Families: Transmembrane
 MW: 22.2 kDa

Gene Summary: The protein encoded by this gene is a single-pass transmembrane protein containing an N-terminal gamma-carboxyglutamic acid (Gla) domain and tandem Pro/Leu-Pro-Xaa-Tyr (PY) motifs at its C-terminal end. The Gla domain is exposed on the cell surface while the PY motifs are cytoplasmic. The PY motifs of the encoded protein have been shown to interact with YAP1, a WW domain-containing protein. Therefore, it is thought that the encoded protein may be part of a signal transduction pathway. Two transcript variants encoding different isoforms have been found for this gene. [provided by RefSeq, Oct 2015]

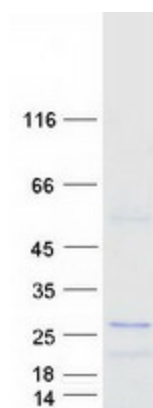
Product images:



Circular map for RC224364



Western blot validation of overexpression lysate (Cat# [LY424446]) using anti-DDK antibody (Cat# [TA50011-100]). Left: Cell lysates from untransfected HEK293T cells; Right: Cell lysates from HEK293T cells transfected with RC224364 using transfection reagent MegaTran 2.0 (Cat# [TT210002]).



Coomassie blue staining of purified PRRG2 protein (Cat# [TP324364]). The protein was produced from HEK293T cells transfected with PRRG2 cDNA clone (Cat# RC224364) using MegaTran 2.0 (Cat# [TT210002]).