

## Product datasheet for **RC224357**

### **PAMR1 (NM\_001001991) Human Tagged ORF Clone**

#### **Product data:**

Product Type:	Expression Plasmids
Product Name:	PAMR1 (NM_001001991) Human Tagged ORF Clone
Tag:	Myc-DDK
Symbol:	PAMR1
Synonyms:	DKFZP586H2123; FP938; RAMP
Mammalian Cell Selection:	Neomycin
Vector:	pCMV6-Entry (PS100001)
E. coli Selection:	Kanamycin (25 ug/mL)



[View online »](#)

ORF Nucleotide  
Sequence:

>RC224357 representing NM\_001001991  
Red=Cloning site Blue=ORF Green=Tags(s)

TTTTGTAATACGACTCACTATAGGGCGGCCGGGAATTCGTCGACTGGATCCGGTACCGAGGAGATCTGCC  
GCC**CGGATCGCC**

ATGGAGCTGGGTTGCTGGACGCAGTTGGGGCTCACTTTTCTTCAGCTCCTTCTCATCTCGTCTTGGCCAA  
GAGAGTACACAGTCATTAATGAAGCCTGCCTGGAGCAGAGTGGAAATATCATGTGTCGGGAGTGCTGTGA  
ATATGATCAGATTGAGTGCCTCTGCCCGGAAAGAGGGAAGTCGTGGGTTATACCATCCCTTGCTGCAGG  
AATGAGGAGAATGAGTGTGACTCCTGCCTGATCCACCCAGGTTGTACCATCTTTGAAAACTGCAAGAGCT  
GCCGAAATGGCTCATGGGGGGTACCTTGGATGACTTCTATGTGAAGGGGTTCTACTGTGCAGAGTGCCG  
AGCAGGCTGGTACGGAGGAGACTGCATGCGATGTGGCCAGGTTCTGCGAGCCCCAAAGGGTCAGATTTTG  
TTGAAAGCTATCCCCTAAATGCTCACTGTGAATGGACCATTATGCTAAACCTGGGTTTGTTCATCCAAC  
TAAGATTTGTCTGTTGAGCCTGGAGTTTACTACATGTGCCAGTATGACTATGTTGAGGTTCTGTATGG  
AGACAACCGCATGGCCAGATCATCAAGCGTGTCTGTGGCAACGAGCGGCCAGCTCCTATCCAGAGCATA  
GGATCCTCACTCCACGTCTCTTCCACTCCGATGGCTCCAAGAATTTTGACGGTTTCCATGCCATTTATG  
AGGAGATCACAGCATGCTCCTCATCCCCTGTTTCCATGACGGCACGTGCGTCTTGACAAGGCTGGATC  
TTACAAGTGTGCCTGCTTGGCAGGCTATACTGGGCAGCGCTGTGAAAATCTCCTTGAAGAAAAGAACTGC  
TCAGACCTGGGGGCCAGTCAATGGGTACCAGAAAATAACAGGGGGCCCTGGGCTTATCAACGGACGCC  
ATGCTAAAATTGGCACCGTGGTGTCTTTCTTTTGTAACTCCTATGTTCTTAGTGGCAATGAGAAAAG  
AACTTGCACGAGAATGGAGAGTGGTCAGGGAACAGCCCATCTGCATAAAAGCCTGCCGAGAACCAAAG  
ATTTGACACCTGGTGAGAAGGAGAGTTCTCCGATGCAGGTTCAAGGGAGACACCATTACACCAGC  
TATACTCAGCGGCTTTCAGCAAGCAGAACTGCAGAGTGCCCTACCAAGAAGCCAGCCCTCCCTTTGG  
AGATCTGCCCATGGGATACCAACATCTGCATACCCAGTCCAGTATGAGTGCATCTCACCCCTTCTACCGC  
CGCTGGGCAGCAGCAGGAGGACATGTCTGAGGACTGGGAAGTGGAGTGGGCGGGCACCATCCTGCATCC  
CTATCTGCGGGAAAATTGAGAACATCACTGCTCCAAGACCCAAGGGTTGCGCTGGCCGTGGCAGGCAGC  
CATCTACAGGAGGACCAGCGGGTGCATGACGGCAGCCTACACAAGGAGCGTGGTTCTAGTCTGCAGC  
GGTGCCCTGGTGAATGAGCGCACTGTGGTGGTGGCTGCCACTGTGTTACTGACCTGGGGAAGGTCACCA  
TGATCAAGACAGCAGACCTGAAAGTTGTTTTGGGAAAATTCTACCGGATGATGACCGGGATGAGAAGAC  
CATCCAGAGCCTACAGATTTCTGCTATCATTCTGCATCCCACTATGACCCCATCCTGCTTGTGCTGAC  
ATCGCCATCCTGAAGCTCCTAGACAAGGCCGTATCAGCACCCGAGTCCAGCCCATCTGCCTCGCTGCCA  
GTCGGGATCTCAGCACTTCTTCCAGGAGTCCCACATCACTGTGGCTGGCTGGAATGTCCTGGCAGACGT  
GAGGAGCCCTGGCTTCAAGAACGACACACTGCGCTCTGGGGTGGTCAAGTGTGGTGGACTCGCTGCTGTGT  
GAGGAGCAGCATGAGGACCATGGCATCCAGTGAAGTGTCACTGATAACATGTTCTGTGCCAGCTGGGAAC  
CCACTGCCCTTCTGATATCTGCACTGCAGAGACAGGAGGCATCGCGGCTGTGTCCTTCCCGGACGAGC  
ATCTCCTGAGCCACGCTGGCATCTGATGGGACTGGTCACTGGAGCTATGATAAAACATGCAGCCACAGG  
CTCTCCACTGCCTTACCAAGGTGCTGCCTTTTAAAGACTGGATTGAAAGAAATATGAAA

**ACGCGT**ACGCGGCCGCTCGAGCAGAACTCATCTCAGAAGAGGATCTGGCAGCAAATGATATCCTGGATT  
ACAAGGATGACGACGATAAGGTTTAA

**Protein Sequence:** >RC224357 representing NM\_001001991  
Red=Cloning site Green=Tags(s)

```
MELGCWTQLGLTFLQLLLISSLPREYTVINEACPGAewnIMCRECCEYDQIECVCPGKREVVGYTIPCCR
NEENECDsclIHPGCTIFENCKSCRNGSWGGLDDFYVKGFYCAECRAGWYGGDCMRGQVLRAPKQIIL
LESYPLNAHCEWTIHAKPGFVIQLRFVMSLEFDYMCQYDYVEVRDGDNRDQIIRKVCGNERPAPIQSI
GSSLHVLFHSDGSKNFDGFHAIYEEITACSSSPCFHDGTCVLDKAGSYKCACLAGYTGRCENLLEERNc
SDPGGPVNGYQKITGGPLINGRHAKIGTVVSFFCNNSYVLSGNEKRTCQQNGEWSGKQPICIKACREPK
ISDLVRRRVLPMQVQSRETPLHQLYSAAFSKQKLQSAPTKKPALPFGDLPNGYQHLHTQLQYECISPFYR
RLGSSRRRTCLRTGKWSGRAPSCIPICGKIENITAPKTQGLRWPWQAAIYRRTSGVHDGSLHKGAWFLVCS
GALVNERTVVVAACHVTDLGKVTMIKTADLKVVLGKfYRDDRDEKTIQSLQISAILHPNYDPILLDAD
IAILKLLDKARISTRVQPICLAASRDLSFSQESHITVAGWNVLADVRSPGFKNDTLRSVVSVVDSLLC
EEQHEDHGIPVSVTDNMFcaswePTAPSDICTAETGGIAAVSFPGRASPEPRWHLMGLVSWSYDKTCSRH
LSTAFTKVLVLPFKDWIERNMK
```

TRTRPLEQKLISEEDLAANDILDYKDDDDKV

**Chromatograms:** [https://cdn.origene.com/chromatograms/mk8001\\_e11.zip](https://cdn.origene.com/chromatograms/mk8001_e11.zip)

**Restriction Sites:** SgfI-MluI

**Cloning Scheme:**

Cloning sites used for ORF Shuttling:



\* The last codon before the Stop codon of the ORF

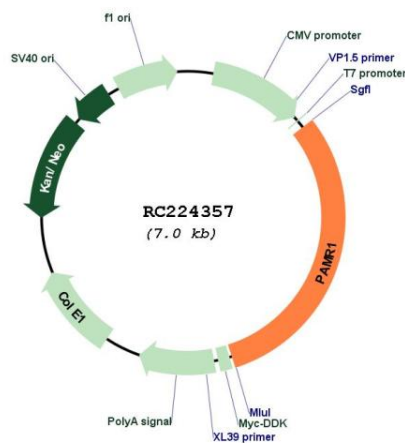
**ACCN:** NM\_001001991

**ORF Size:** 2160 bp

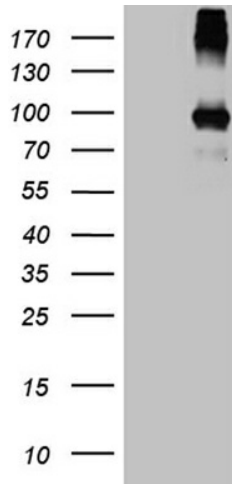
**OTI Disclaimer:** The molecular sequence of this clone aligns with the gene accession number as a point of reference only. However, individual transcript sequences of the same gene can differ through naturally occurring variations (e.g. polymorphisms), each with its own valid existence. This clone is substantially in agreement with the reference, but a complete review of all prevailing variants is recommended prior to use. [More info](#)

**OTI Annotation:** This clone was engineered to express the complete ORF with an expression tag. Expression varies depending on the nature of the gene.

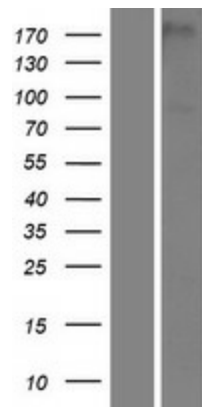
<b>Components:</b>	The ORF clone is ion-exchange column purified and shipped in a 2D barcoded Matrix tube containing 10ug of transfection-ready, dried plasmid DNA (reconstitute with 100 ul of water).
<b>Reconstitution Method:</b>	<ol style="list-style-type: none"> <li>1. Centrifuge at 5,000xg for 5min.</li> <li>2. Carefully open the tube and add 100ul of sterile water to dissolve the DNA.</li> <li>3. Close the tube and incubate for 10 minutes at room temperature.</li> <li>4. Briefly vortex the tube and then do a quick spin (less than 5000xg) to concentrate the liquid at the bottom.</li> <li>5. Store the suspended plasmid at -20°C. The DNA is stable for at least one year from date of shipping when stored at -20°C.</li> </ol>
<b>RefSeq:</b>	<u>NM_001001991.3</u>
<b>RefSeq Size:</b>	2747 bp
<b>RefSeq ORF:</b>	2163 bp
<b>Locus ID:</b>	25891
<b>UniProt ID:</b>	<u>Q6UXH9</u>
<b>Cytogenetics:</b>	11p13
<b>Protein Families:</b>	Druggable Genome, Protease
<b>MW:</b>	80 kDa
<b>Gene Summary:</b>	May play a role in regeneration of skeletal muscle.[UniProtKB/Swiss-Prot Function]

**Product images:**


Circular map for RC224357



HEK293T cells were transfected with the pCMV6-ENTRY control (Cat# [PS100001], Left lane) or pCMV6-ENTRY PAMR1 (Cat# RC224357, Right lane) cDNA for 48 hrs and lysed. Equivalent amounts of cell lysates (5 ug per lane) were separated by SDS-PAGE and immunoblotted with anti-PAMR1 (Cat# [TA809285])(1:500).



Western blot validation of overexpression lysate (Cat# [LY424307]) using anti-DDK antibody (Cat# [TA50011-100]). Left: Cell lysates from untransfected HEK293T cells; Right: Cell lysates from HEK293T cells transfected with RC224357 using transfection reagent MegaTran 2.0 (Cat# [TT210002]).