

Product datasheet for **RC224343**

GPR103 (QRFPR) (NM_198179) Human Tagged ORF Clone

Product data:

Product Type:	Expression Plasmids
Product Name:	GPR103 (QRFPR) (NM_198179) Human Tagged ORF Clone
Tag:	Myc-DDK
Symbol:	GPR103
Synonyms:	AQ27; GPR103; SP9155
Mammalian Cell Selection:	Neomycin
Vector:	pCMV6-Entry (PS100001)
E. coli Selection:	Kanamycin (25 ug/mL)



[View online »](#)

ORF Nucleotide Sequence:

>RC224343 representing NM_198179
 Red=Cloning site Blue=ORF Green=Tags(s)

TTTTGTAATACGACTCACTATAGGGCGGCCGGAATTCGTCGACTGGATCCGGTACCGAGGAGATCTGCC
 GCC**GCGATCGCC**

ATGCAGGCGCTTAACATTACCCCGAGCAGTTCTCTCGGCTGCTGCGGGACCACAACCTGACGCGGGAGC
 AGTTCATCGCTCTGTACCGGCTGCGACCGCTCGTCTACACCCAGAGCTGCCGGGACGCGCAAGCTGGC
 CCTCGTGCTACCGCGTGTCTATCTTCGCCCTGGCGCTCTTTGGCAATGCTCTGGTGTCTACGTGGT
 ACCCGCAGCAAGGCCATGCGCACCGTACCAACATCTTTATCTGCTCCTTGGCGCTCAGTGACCTGCTCA
 TCACCTTCTTCTGCATTCCCGTACCATGCTCCAGAACATTTCCGACAACCTGGCTGGGGGTGCTTTCAT
 TTGCAAGATGGTCCATTTGTCCAGTCTACCGCTGTTGTGACAGAAATCCTCACTATGACCTGCATTGCT
 GTGAAAGGCACCGGACTTGTGCATCCTTTAAATGAAGTGGCAATACCAACCGAAGGGCTTTCA
 CAATGCTAGGTGGTCTGGCTGGTGGCAGTATCGTAGGATCACCCATGTGGCACGTGCAACAACCTTGA
 GATCAAATATGACTTCTATATGAAAAGGAACACATCTGCTGCTTAGAAGAGTGGACCAGCCCTGTGCAC
 CAGAAGATCTACACCACCTTCATTCTTGTATCCTCTTCTCCTGCTCTTATGGTGATGCTTATTCTGT
 ACAGTAAAATTGGTTATGAACCTTGGATAAAGAAAAGAGTTGGGGATGGTTCAGTGCTTCGAACTATTCA
 TGGAAAAGAAATGTCAAATAGCCAGGAAGAAGAAACGAGCTGTATTATGATGGTGACAGTGGTGGCT
 CTCTTGTGTGTGCTGGGCACCATCCATGTTGTCCATATGATGATTGAATACAGTAAATTTGAAAAGG
 AATATGATGATGTCACAATCAAGATGATTTTGTATCGTGCAAATATTGGATTTTCCAACCTCCATCTG
 TAATCCCATGTCTATGCATTTATGAATGAAAACCTCAAAAAAATGTTTCGTCTGCAGTTTGTATTGC
 ATAGTAAATAAACCTTCTCTCCAGCACAAAGGCATGGAATTCAGGAATTACAATGATGCGGAAGAAAG
 CAAAGTTTTCCCTCAGAGAGAATCCAGTGGAGAAACCAAGGAGAAGCATTAGTATGGCAACATTGA
 AGTCAAATTGTGTGAACAGACAGAGGAGAAGAAAAGCTCAAACGACATCTTGTCTCTTTAGGTCTGAA
 CTGGCTGAGAATTCTCCTTAGACAGTGGGCAT

ACGCGTACGCGGCCGCTCGAGCAGAAACTCATCTCAGAAGAGGATCTGGCAGCAAATGATATCCTGGATT
 ACAAGGATGACGACGATAAGGTTTAA

Protein Sequence:

>RC224343 representing NM_198179
 Red=Cloning site Green=Tags(s)

MQALNITPEQFSRLLRDHNLTREQFIALYRLRPLVYTPPELPGRAKLALVLTGVLIFALALFGNALVFYV
 TRSKAMRTVTNIFICSLALSDLITFFCIPVTMLQNISDNWLGGAFIGKMPVQSTAVVTEILTMTCIA
 VERHQGLVHPFKMKWQYTNRRAF TMLGVVWLVAIVIGSPMWHVQLEIKYDFLYEKEHICCLEEWTSPVH
 QKIYTTFILVILFLLPLMVMLILYSKIGYELWIKKRVGDGSLRTIHKEMSKIARKKKRAVIMMVTVA
 LFAVCWAPFHVVHMMIEYSNFEKEYDDVTIKMIFAIVQIIGFSNSICNPIVYAFMNENFKKNVSSAVCYC
 IVNKTFSQAQRHNGSGITMMRKKAKFSLRENPEETKGEAFSDGNIEVKLCEQTEEKKLKRHLALFRSE
 LAENSPLDSGH

TRTRPLEQKLISEEDLAANDILDYKDDDDKV

Chromatograms:

https://cdn.origene.com/chromatograms/mk6116_d07.zip

Restriction Sites:

Sgfl-Mlul

Cloning Scheme:


ACCN: NM_198179

ORF Size: 1293 bp

OTI Disclaimer: The molecular sequence of this clone aligns with the gene accession number as a point of reference only. However, individual transcript sequences of the same gene can differ through naturally occurring variations (e.g. polymorphisms), each with its own valid existence. This clone is substantially in agreement with the reference, but a complete review of all prevailing variants is recommended prior to use. [More info](#)

OTI Annotation: This clone was engineered to express the complete ORF with an expression tag. Expression varies depending on the nature of the gene.

Components: The ORF clone is ion-exchange column purified and shipped in a 2D barcoded Matrix tube containing 10ug of transfection-ready, dried plasmid DNA (reconstitute with 100 ul of water).

Reconstitution Method:

1. Centrifuge at 5,000xg for 5min.
2. Carefully open the tube and add 100ul of sterile water to dissolve the DNA.
3. Close the tube and incubate for 10 minutes at room temperature.
4. Briefly vortex the tube and then do a quick spin (less than 5000xg) to concentrate the liquid at the bottom.
5. Store the suspended plasmid at -20°C. The DNA is stable for at least one year from date of shipping when stored at -20°C.

RefSeq: [NM_198179.3](#)

RefSeq Size: 1296 bp

RefSeq ORF: 1296 bp

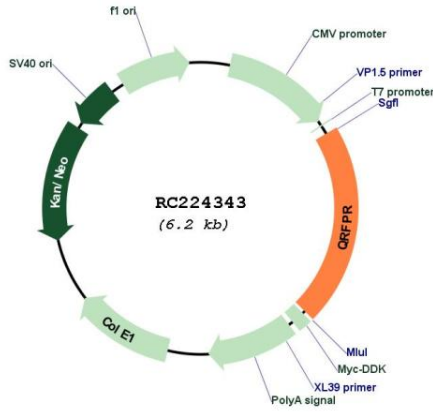
Locus ID: 84109

UniProt ID: [Q96P65](#)

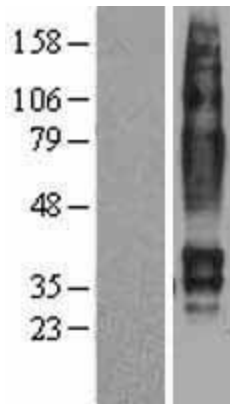
Cytogenetics: 4q27

Protein Families: Druggable Genome, GPCR, Transmembrane
MW: 49.3 kDa
Gene Summary: Receptor for the orexigenic neuropeptide QRFP. The activity of this receptor is mediated by G proteins that modulate adenylate cyclase activity and intracellular calcium levels. [UniProtKB/Swiss-Prot Function]

Product images:



Circular map for RC224343



Western blot validation of overexpression lysate (Cat# [LY403681]) using anti-DDK antibody (Cat# [TA50011-100]). Left: Cell lysates from untransfected HEK293T cells; Right: Cell lysates from HEK293T cells transfected with RC224343 using transfection reagent MegaTran 2.0 (Cat# [TT210002]).