

Product datasheet for **RC224336**

Sumo 2 (SUMO2) (NM_006937) Human Tagged ORF Clone

Product data:

Product Type: Expression Plasmids
Product Name: Sumo 2 (SUMO2) (NM_006937) Human Tagged ORF Clone
Tag: Myc-DDK
Symbol: Sumo 2
Synonyms: HSMT3; Smt3A; SMT3B; SMT3H2; SUMO3
Mammalian Cell Selection: Neomycin
Vector: pCMV6-Entry (PS100001)
E. coli Selection: Kanamycin (25 ug/mL)
ORF Nucleotide Sequence: >RC224336 representing NM_006937
Red=Cloning site Blue=ORF Green=Tags(s)

TTTTGTAATACGACTCACTATAGGGCGCCGGGAATTCGTCGACTGGATCCGGTACCGAGGAGATCTGCC
GCC**CGATCGCC**

ATGGCCGACGAAAAGCCCAAGGAAGGAGTCAAGACTGAGAACAACGATCATATTAATTTGAAGGTGGCGG
GGCAGGATGGTTCTGTGGTGCAGTTTAAGATTAAGAGGCATACCACTTAGTAACTAATGAAAGCCTA
TTGTGAACGACAGGGATTGTCAATGAGGCAGATCAGATCCGATTTGACGGGCAACCAATCAATGAAACA
GACACACCTGCACAGTTGAAATGGAGGATGAAGATAAATTGATGTGTCCAACAGCAGACGGGAGGTG
TCTAC

ACGCGTACGCGGCCGCTCGAGCAGAAACTCATCTCAGAAGAGGATCTGGCAGCAAATGATATCCTGGATT
ACAAGGATGACGACGATAAGGTTTAA

Protein Sequence: >RC224336 representing NM_006937
Red=Cloning site Green=Tags(s)
MADEKPKKEGVKTENNDHINLKVAGQDGSVVQFKIKRHTPLSKLMKAYCERQGLSMRQIRFRFDGQPINET
DTPAQLEMEDEDTIDVFQQQTGGVY

TRTRPLEQKLISEEDLAANDILDYKDDDDKV

Chromatograms: https://cdn.origene.com/chromatograms/mg3774_h01.zip

Restriction Sites: SgfI-MluI



[View online »](#)

UniProt ID: [P61956](#)

Cytogenetics: 17q25.1

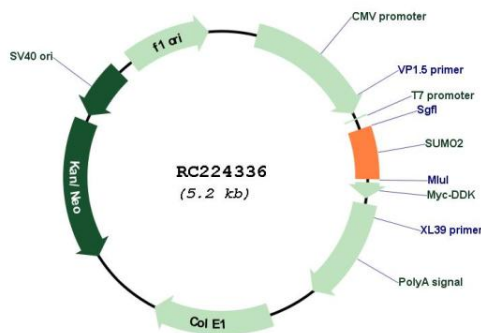
Domains: UBQ

Protein Families: Druggable Genome

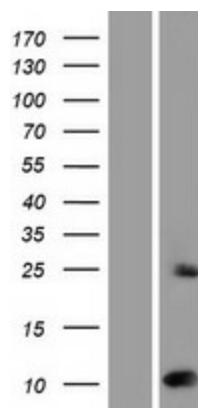
MW: 10.7 kDa

Gene Summary: This gene encodes a protein that is a member of the SUMO (small ubiquitin-like modifier) protein family. It functions in a manner similar to ubiquitin in that it is bound to target proteins as part of a post-translational modification system. However, unlike ubiquitin which targets proteins for degradation, this protein is involved in a variety of cellular processes, such as nuclear transport, transcriptional regulation, apoptosis, and protein stability. It is not active until the last two amino acids of the carboxy-terminus have been cleaved off. Numerous pseudogenes have been reported for this gene. Alternate transcriptional splice variants, encoding different isoforms, have been characterized. [provided by RefSeq, Jul 2008]

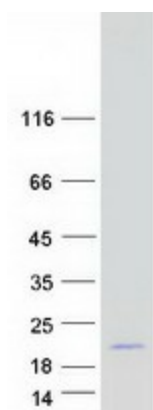
Product images:



Circular map for RC224336



Western blot validation of overexpression lysate (Cat# [LY416283]) using anti-DDK antibody (Cat# [TA50011-100]). Left: Cell lysates from untransfected HEK293T cells; Right: Cell lysates from HEK293T cells transfected with RC224336 using transfection reagent MegaTran 2.0 (Cat# [TT210002]).



Coomassie blue staining of purified SUMO2 protein (Cat# [TP324336]). The protein was produced from HEK293T cells transfected with SUMO2 cDNA clone (Cat# RC224336) using MegaTran 2.0 (Cat# [TT210002]).