

## Product datasheet for **RC224326**

### **Dynamin 3 (DNM3) (NM\_015569) Human Tagged ORF Clone**

#### **Product data:**

Product Type:	Expression Plasmids
Product Name:	Dynamin 3 (DNM3) (NM_015569) Human Tagged ORF Clone
Tag:	Myc-DDK
Symbol:	Dynamin 3
Synonyms:	Dyna III
Mammalian Cell Selection:	Neomycin
Vector:	pCMV6-Entry (PS100001)
E. coli Selection:	Kanamycin (25 ug/mL)



[View online »](#)

ORF Nucleotide  
Sequence:

&gt;RC224326 representing NM\_015569.

Blue=ORF Red=Cloning site Green=Tag(s)

```
GCTCGTTTAGTGAACCGTCAGAATTTTGTAAACGACTCACTATAGGGCGGCCGGGAATTCGTGACTG
GATCCGGTACCGAGGAGATCTGCCGCCCGCATCGCC
ATGGGGAACCGGGAGATGGAGGAGCTGATCCCGCTGGTGAACCGTCTGCAGGACGCGTTTTTCGGCGCTG
GGACAGAGCTGCCTGCTGGAGCTGCCGCAGATCGCCGTTGGGCGGCCAGAGCGCCGGCAAGACTCG
GTGCTCGAGAACTTCGTGGGCAGGGACTTCTCCCTCGAGGGTTCGGGCATTGTAACAAGACGACCTTT
GTGCTGCAGCTTGTACTTCTAAAGCAGAATATGCCGAGTTTCTACATTGCAAAGGAAAGAAATTTACA
GATTTTGTGAAGTTCGCCTTGAGATTGAAGCAGAAACAGATCGCGTGACTGGAATGAATAAAGGCATT
TCCTCCATACCCATTAATTTACGAGTCTATCCCCACACGTGTTAAATCTAACCCATTATTGATCTACCT
GGAATAACTAAAGTGCCTGTGGGAGATCAGCCACCAGATATCGAGTATCAGATCAGAGAAATGATTATG
CAGTTCATCACGAGGGAGAAGTGTCTGATTTTAGCTGTTACTCCAGCCAACACTGATCTTGCAAACCTCA
GATGCGCTGAAGTAGCTAAAGAAGTTGATCCTCAAGGTCTGAGAACCATTGGAGTTATCACCAAACCTG
GACCTTATGGATGAAGGAACGGATGCCAGGGATGTTCTAGAGAACAACCTGTTGCCTCTTCGAGGGGT
TACGTGGGGTGGTAAACAGAAGCCAGAAGGACATAGATGGGAAGAAGGACATAAAGGCAGCCATGCTG
GCAGAGAGGAAGTTTTCTTTCCACCCGGCTTACAGACATATCGCTGACCGAATGGGAACCCACAC
CTGCAGAAGTCTTAATCAGCAACTTACCAACCACATTCGGGATACCCTACCAAACCTCAGGAACAAA
CTACAGGGACAGTTGCTCTCCATAGAACATGAAGTAGAAGCCTACAAAAATTTCAAACGAGAAGACCCA
ACAAGGAAGACCAAGCATTGCTGCAGATGGTTCAGCAATTTGCTGTGGACTTTGAGAAGAGAATTGAA
GGGTGAGGGATCAAGTAGATACCCTGGAACCTCAGGTGGTGTAAAATCAATCGTATTTTTCATGAA
CGTTTTCTTTTGGATAGTAAAGATGGAGTTCAATGAGAAAGAATTGCGAAGAGAATAAGCTATGCA
ATCAAAAACATACATGGTATCAGGACAGGGTGTACTCCAGACATGGCATTGGAAGCAGATAGTCAAG
AAACAGATTGTAAGTTGAAAGGCTTCCCTTGAAGAGTGTGGATCTGGTAAATACAAGAATTAATCAAC
ACTGTGAAGAAGTGTACCAAAAACTGGCAAACTTCCCCAGACTCTGCGAGGAAACGAAAAGGATTGTT
GCTAACCCACATTCGTGAGCGAGAAGGGAAGACAAAGGACCAGGATTGCTATTGATTGACATTCAAGTC
TCTTACATCAACACCAACCATGAAGACTTCATTGGCTTCGCAAAATGCTCAGCAGAGGAGCAGTCAGGTT
CACAAGAAAACACAGTTGAAAATCAGGTGATTCGCAAGGGTGGCTCACCATCAGCAACATTGGCATT
ATGAAAGGCGGCTCGAAGGATACTGGTTCGTCTTACTGCGGAAAGCTGTCCTGGTATAAAGATGAT
GAGGAAAAAGAAAAGAAGTACATGCTTCCCTTGGACAACCTGAAAGTTCCGGGATGTGAAAAGAGCTTT
ATGTCTAGCAAGCACATCTTTGACTCTTTAATACAGAGCAAAGGAATGTATACAAGACTATCGCTTC
CTTGAGCTGGCATGTGATTTCCAGGAGGATGTCGACAGCTGGAAGGCATCTCTACTAAGAGCTGGGGTC
TATCTTGACAAATCTGTAGGGAACAACAAGCTGAAAATGATGAGAATGGACAAGCAGAAAACTTTTCC
ATGGACCCACAATTGGAGAGGCAAGTGGAGACCATTTCGCAACCTCGTAGACTCCTACATGTCCATTATC
AACAAATGTATCCGAGATCTAATTTCAAAAAACAATAATGCACCTTATGATCAATAACGTTAAAGATTTT
ATAAATCCGAGCTCCTAGCACAGTTGTATTCTCAGAGGACCAAAAATACCCTGATGGAGGAATCTGCT
GAGCAGGCTCAGCGCCGGGATGAGATGCTTCGAATGTATCAAGCACTGAAAGAAGCCCTTGGGATAATT
GGGGACATCAGCACGGCCACCGTGTCCACTCCGGCACCCCTCCAGTGGATGACTCCTGGATACAGCAC
TCTCGCAGTACCTCCTCAAGCCCCACAACCCAAAGGAGGCCAACACTAAGTGCTCCCCTCGCAAGG
CCACATCCGGCCGAGGACCAGCTCCTGCCATTCCCTCTCCTGGCCCCACTCTGGGGCTCCTCCAGTC
CCATTCCGTCCAGGCCATTACCTCCTTTCCCAAGCAGCAGTACTCCTTCGGAGCCCTCCACAAGTT
CCATCTAGGCCTACGAGGGCCCCGCCAGTGTCCCAAGCCGAGACCACCCCATCACCAACTCGTCCC
ACTATAATCCGCCCACTAGAATCCTCCCTGTTAGAC
AGCGGACCGACGCGTACGCGGCCGCTCGAGCAGAACTCATCTCAGAAGAGGATCTGGCAGCAAATGAT
ATCCTGGATTACAAGGATGACGACGATAAGGTTTAA
```

**Protein Sequence:** >Peptide sequence encoded by RC224326  
 Blue=ORF Red=Cloning site Green=Tag(s)

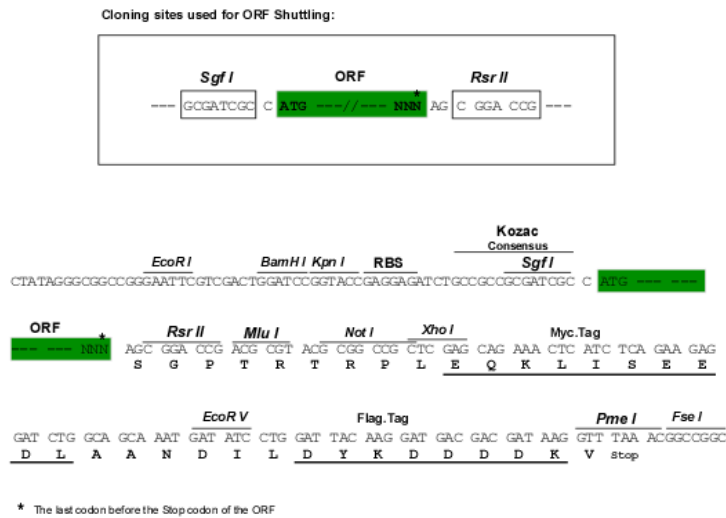
MGNREMEELIPLVNRLQDAFSALGQSCLLELPQIAVVGGSAGKSSVLENFVGRDFLPRGSGIVTRRPL  
 VLQLVTSKAEYAEFLHCKGKKFTDFDEVRLIEAETDRVTGMNKGISSIPINLRVYSPHVLNLTIDLP  
 GITKVPVGDQPPDIEYQIREMIMQFITRENCLILAVTPANTDLANSALKLAKEVDPQGLRTIGVITKL  
 DLMDEGTDARDVLENKLLPLRRGYVGVNRSQKDIDGKKDIKAAMLAERKFFLSHPAYRHIADRMGTPH  
 LQKVLNQQLTNHIRDTLPNFRNKLQGQLLSIEHEVEAYKNFKPEDPTRKTKALLQMVQQFAVDFEKRIE  
 GSGDQVDTLELSGGAKINRIFHERFPFEIVKMEFNEKELRREISYAIKNIHGIRTGLFTPDMAFEAIVK  
 KQIVKLGKPSLKSVDLVIQELINTVKKCTKLANFPRLCEETERIVANHIREREGTKDQVLLLIDIQV  
 SYINTNHEDFIGFANAQQRSSQVHKTTVGNQVIRKGWLTISNIGIMKGGSKGYWVFLTAESLSWYKDD  
 EEEKKYMLPLDNLKVRDVEKSFMSKHFALFNTEQRNVYKDYRFEELACDSQEDVDSWKASLLRAGV  
 YPDKSVGNKAENDENGAENFSMDPQLERQVETIRNLVDSYMSIINKCIRDLPKTIIMHLMINNVKDF  
 INSELLAQLYSSEQNTLMEESAQAQRREMLRMYQALKEALGIIGDISTATVSTPAPPVDDSWIQH  
 SRRSPPPSPTTQRRPTLSAPLARPTSGRGPAPAIPSPGPHSGAPPVFRPGPLPPFPSSSDSFGAPPQV  
 PSRPTRAPPSVPSRRPPSPTRPTIIRPLESSLLD  
 SGPTRTRPLEQKLISEEDLAANDILDYKDDDDKV

Recombinant protein using RC224326 also available, [TP324326](#)

**Chromatograms:** [https://cdn.origene.com/chromatograms/mk6184\\_b08.zip](https://cdn.origene.com/chromatograms/mk6184_b08.zip)

**Restriction Sites:** SgfI-RsrII

Cloning Scheme:



ACCN: NM\_015569

ORF Size: 2589 bp

OTI Disclaimer: The molecular sequence of this clone aligns with the gene accession number as a point of reference only. However, individual transcript sequences of the same gene can differ through naturally occurring variations (e.g. polymorphisms), each with its own valid existence. This clone is substantially in agreement with the reference, but a complete review of all prevailing variants is recommended prior to use. [More info](#)

OTI Annotation: This clone was engineered to express the complete ORF with an expression tag. Expression varies depending on the nature of the gene.

Components: The ORF clone is ion-exchange column purified and shipped in a 2D barcoded Matrix tube containing 10ug of transfection-ready, dried plasmid DNA (reconstitute with 100 ul of water).

**Reconstitution Method:**

1. Centrifuge at 5,000xg for 5min.
2. Carefully open the tube and add 100ul of sterile water to dissolve the DNA.
3. Close the tube and incubate for 10 minutes at room temperature.
4. Briefly vortex the tube and then do a quick spin (less than 5000xg) to concentrate the liquid at the bottom.
5. Store the suspended plasmid at -20°C. The DNA is stable for at least one year from date of shipping when stored at -20°C.

**RefSeq Size:** 7644 bp

**RefSeq ORF:** 2592 bp

**Locus ID:** 26052

**UniProt ID:** [Q9UQ16](#)

**Cytogenetics:** 1q24.3

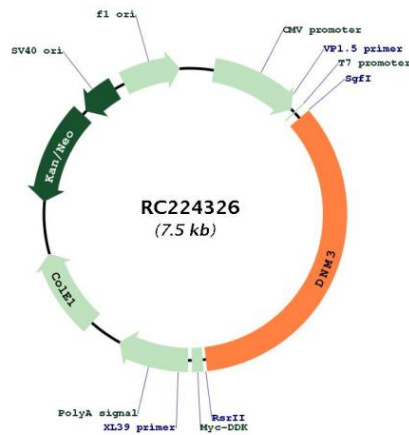
**Domains:** dynamin\_2, dynamin, PH, GED

**Protein Pathways:** Endocytosis, Fc gamma R-mediated phagocytosis

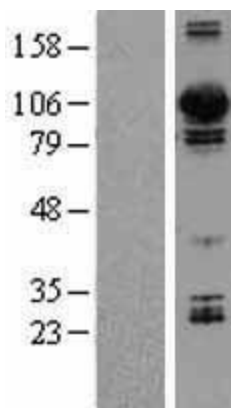
**MW:** 97.1 kDa

**Gene Summary:** This gene encodes a member of a family of guanosine triphosphate (GTP)-binding proteins that associate with microtubules and are involved in vesicular transport. The encoded protein functions in the development of megakaryocytes. Alternative splicing results in multiple transcript variants. [provided by RefSeq, May 2013]

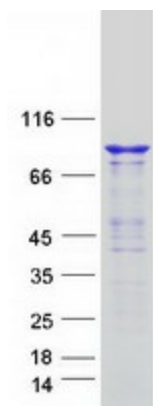
**Product images:**



Circular map for RC224326



Western blot validation of overexpression lysate (Cat# [LY402450]) using anti-DDK antibody (Cat# [TA50011-100]). Left: Cell lysates from untransfected HEK293T cells; Right: Cell lysates from HEK293T cells transfected with RC224326 using transfection reagent MegaTran 2.0 (Cat# [TT210002]).



Coomassie blue staining of purified DN3 protein (Cat# [TP324326]). The protein was produced from HEK293T cells transfected with DN3 cDNA clone (Cat# RC224326) using MegaTran 2.0 (Cat# [TT210002]).