

Product datasheet for **RC224323**

STEAP3 (NM_182915) Human Tagged ORF Clone

Product data:

Product Type:	Expression Plasmids
Product Name:	STEAP3 (NM_182915) Human Tagged ORF Clone
Tag:	Myc-DDK
Symbol:	STEAP3
Synonyms:	AHMIO2; dudlin-2; dudulin-2; pHyde; STMP3; TSAP6
Mammalian Cell Selection:	Neomycin
Vector:	pCMV6-Entry (PS100001)
E. coli Selection:	Kanamycin (25 ug/mL)



[View online »](#)

ORF Nucleotide Sequence:

>RC224323 representing NM_182915
 Red=Cloning site Blue=ORF Green=Tags(s)

TTTTGTAATACGACTCACTATAGGGCGGCCGGAATTCGTCGACTGGATCCGGTACCGAGGAGATCTGCC
 GCC**CGGATCGCC**

ATGTCGCACCAGCCTGCTGTTGCCACAAAATGCCAGAAGAGATGGACAAGCCACTGATCAGCCTCCACC
 TGGTGGACAGCGATAGTAGCCTTGCCAAGGTCCCGATGAGGCCCCAAAGTGGGCATCCTGGGTAGCGG
 GGACTTTGCCCGCTCCCTGGCCACACGCCTGGTGGCTCTGGCTTCAAAGTGGTGGTGGGAGCCGCAAC
 CCCAAACGCACAGCCAGGCTGTTCCCTCAGCGGCCAAAGTACTTCCAAGAGGAGGCAGTGAGCTCCC
 CGGAGGTCATCTTTGTGGCTGTGTTCCGGGAGCACTACTTCACTGTGCAGTCTCAGTGACCAGCTGGC
 GGGCAAGATCCTGGTGGATGTGAGCAACCCTACAGAGCAAGAGCACCTTCAGCATCGTGAGTCCAATGCT
 GAGTACCTGGCCTCCCTCTCCCACTGCACAGTGGTCAAGGCCTTCAATGTCATCTCTGCCTGGACCC
 TGCAGGCTGGCCAAAGGGATGGTAACAGGCAGGTGCCATCTGCGGTGACCAGCCAGAAGCCAAGCGTGC
 TGTCTCGGAGATGGCGCTCGCCATGGGCTTCATGCCCGTGACATGGGATCCCTGGCGTCAGCCTGGGAG
 GTGGAGGCCATGCCCTGCGCCTCTCCCGCCTGGAAGGTGCCACCCTGCTGGCCTGGGGCTCTTCG
 TCTGCTTCTATGCCTACAACCTCGTCCGGGACGTTCTGCAGCCCTATGTGCAAGAAAGCCAGAACAAGTT
 CTTCAAGCTGCCCGTGTCCGTGGTCAACACCACACTGCCGTGCGTGGCCTACGTGCTGCTGCACTCGTG
 TACTTGCCCGGCGTGTGGCGGCTGCCCTGCAGCTGCGGCGCGGCACCAAGTACCAGCGCTTCCCGACT
 GGCTGGACCACCTGGTACAGCACCGCAAGCAGATCGGGCTGCTCAGCTTCTTCTGCGCCGCCCTGCACGC
 CCTCTACAGCTTCTGCTTGGCGTGCGCCGCGCCACCCTACGACCTGGTCAACTGGCAGTCAAGCAG
 GTCTTGGCCAACAAGAGCCACCTCTGGGTGGAGGAGGAGTCTGGCGGATGGAGATCTACCTCTCCCTGG
 GAGTGTGGCCCTCGGCACGTTGCTCCCTGCTGGCCGTGACCTACTGCCGTCCATTGCAAACCTGCCTCAA
 CTGGAGGAGTTCACTTCGTTTCACTCCTCACTGGGCTTTGTGGCCCTCGTGTGAGCACACTGCACACG
 CTCACCTACGGCTGGACCCGCGCCTTCGAGGAGAGCCGCTACAAGTTCTACCTGCCTCCACCTTACGC
 TCACGCTGCTGGTGCCTGCGTGTGTCATCTGGCCAAAGCCCTGTTTCTCCTGCCCTGCATCAGCCGCGAG
 ACTCGCCAGGATCCGGAGAGGCTGGGAGAGGAGAGCACCATCAAGTTCACGCTGCCACAGACCAGCC
 CTGGCCGAGAAGACGAGCCAGTA

ACGCGTACGCGGCCGCTCGAGCAGAAACTCATCTCAGAAGAGGATCTGGCAGCAAATGATATCCTGGATT
 ACAAGGATGACGACGATAAGGTTTAA

Protein Sequence:

>RC224323 representing NM_182915
 Red=Cloning site Green=Tags(s)

MSHQPAVATKMPEEMDKPLISLHLVDSDSLAKVPDEAPKVGILGSGDFARSLATRLVSGFKVVVGSRN
 PKRTARLFPSSAAQVTFQEEAVSSPEVIFVAVFREHYSSLCSLSDQLAGKILVDVSNPTEQEHLQHRESNA
 EYLASLFPTCTVVKAFNVISAWTLQAGPRDGNRQVPICGDQPEAKRAVSEMALAMGFMPVDMGSLASAW
 VEAMPLRLLPAWKVPTLLALGLFVCFYAYNFVRDVLQPYVQESQNKFFKLPVSVVNTTLPVAYVLLSLV
 YLPGVLAALQLRRGTYQRFPDWLDHWLQHRKQIGLLSFFCAALHALYSFCLPLRRAHRYDLVNLAVKQ
 VLANKSHLWVEEIVRMEIYLSLGLVALGTLSELLAVTSLPSIANSLNWREFSFVQSSLGVALVSLTHT
 LTYGWTRAFEESRYKFLPPTFTLLVPCVVILAKALFLLPCISRRLARIRRGWERESTIKFTLPTDHA
 LAEKTSHV

TRTRPLEQKLISEEDLAANDILDYKDDDDKV

Chromatograms:

https://cdn.origene.com/chromatograms/mk8063_e11.zip

Restriction Sites:

Sgfl-Mlul

Cloning Scheme:


ACCN: NM_182915

ORF Size: 1494 bp

OTI Disclaimer: The molecular sequence of this clone aligns with the gene accession number as a point of reference only. However, individual transcript sequences of the same gene can differ through naturally occurring variations (e.g. polymorphisms), each with its own valid existence. This clone is substantially in agreement with the reference, but a complete review of all prevailing variants is recommended prior to use. [More info](#)

OTI Annotation: This clone was engineered to express the complete ORF with an expression tag. Expression varies depending on the nature of the gene.

Components: The ORF clone is ion-exchange column purified and shipped in a 2D barcoded Matrix tube containing 10ug of transfection-ready, dried plasmid DNA (reconstitute with 100 ul of water).

Reconstitution Method:

1. Centrifuge at 5,000xg for 5min.
2. Carefully open the tube and add 100ul of sterile water to dissolve the DNA.
3. Close the tube and incubate for 10 minutes at room temperature.
4. Briefly vortex the tube and then do a quick spin (less than 5000xg) to concentrate the liquid at the bottom.
5. Store the suspended plasmid at -20°C. The DNA is stable for at least one year from date of shipping when stored at -20°C.

RefSeq: [NM_182915.3](#)

RefSeq Size: 4285 bp

RefSeq ORF: 1497 bp

Locus ID: 55240

UniProt ID: [Q658P3](#)

Cytogenetics: 2q14.2

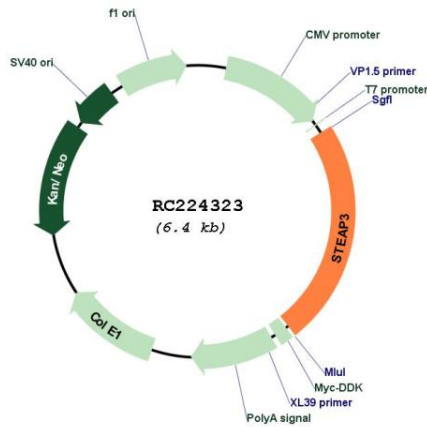
Protein Families: Transmembrane

Protein Pathways: p53 signaling pathway

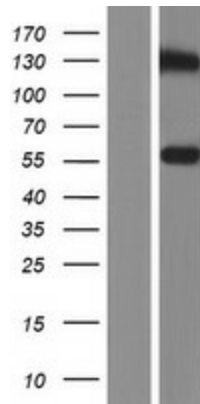
MW: 55.5 kDa

Gene Summary: This gene encodes a multipass membrane protein that functions as an iron transporter. The encoded protein can reduce both iron (Fe³⁺) and copper (Cu²⁺) cations. This protein may mediate downstream responses to p53, including promoting apoptosis. Deficiency in this gene can cause anemia. Alternative splicing results in multiple transcript variants. [provided by RefSeq, Aug 2015]

Product images:



Circular map for RC224323



Western blot validation of overexpression lysate (Cat# [LY405328]) using anti-DDK antibody (Cat# [TA50011-100]). Left: Cell lysates from untransfected HEK293T cells; Right: Cell lysates from HEK293T cells transfected with RC224323 using transfection reagent MegaTran 2.0 (Cat# [TT210002]).