

## Product datasheet for **RC224319**

### **C3orf23 (TCAIM) (NM\_173826) Human Tagged ORF Clone**

#### **Product data:**

Product Type:	Expression Plasmids
Product Name:	C3orf23 (TCAIM) (NM_173826) Human Tagged ORF Clone
Tag:	Myc-DDK
Symbol:	C3orf23
Synonyms:	C3orf23; TOAG-1; TOAG1
Mammalian Cell Selection:	Neomycin
Vector:	pCMV6-Entry (PS100001)
E. coli Selection:	Kanamycin (25 ug/mL)



[View online »](#)

**ORF Nucleotide Sequence:**

>RC224319 representing NM\_173826  
 Red=Cloning site Blue=ORF Green=Tags(s)

TTTTGTAATACGACTCACTATAGGGCGGCCGGAATTCGTCGACTGGATCCGGTACCGAGGAGATCTGCC  
 GCC**GCGATCGCC**

ATGTTTTGCCACCTGAGACCTATGAGGAGTTATGTCTAGAGAAGATATTTCCACACTGGTTTCCCTTTT  
 CAAGAGCTTTATCGGGAGCTGAAGCAGTCAATGCCTTGAGGCCTTCTATTTTGCAGTACATCCAGATTT  
 CTTTGGACAGCACCCCGTAGAAAGGAAATCAATGAAAATTCTCTTAAAAGGTTAAGTGTCTACCTAGAA  
 AACCTCCAGAAACCAGGCTTCAAGTCTTTGAAACCAACTCAGCTTACATTTTATGTAAGAGAAACAGACC  
 AGAGTTCTCCGATGGCCAGGAACCTTTTAGTACTTCCGATTTTCGAGCAGTCAAATTTACTTTGCACAC  
 CAGAGATCTGCTAAGCACAGTGTATATATTCTCAACTCTGCAGTTTATCTGTTGAACATATCCAAAGC  
 TTGAATACTAATATGCATACCCAGCCTCTCAAAGAAGCTAAAAGGATGCCTGACAGGCCCATCAAATGGG  
 ACAAGTCTTATTACTCTTTACTGGATTCAAGGACCCTGATGAAGACCTTGAACAAGTCTCGAGAGTGA  
 AACAACTCTCACATCCTGGTTAGATAACAATGGGAAAAGTGTCTGTTAAAAAGCTAAAGAACAGTTTGCCA  
 CTTAGAAAAGAACTAGATCGTTTAAAAGATGAAGTGTCTCATCAATTGCAACTCTCAGATATCAGGTGGC  
 AGAGGAGCTGGGGCATCGCCACCGCTGTAGCCAGCTGCATAGTTTAAAGCCGCTTAGCACAGCAGAAATTT  
 GGAAACACTTAAAAAGCAAAAGGGTGTACAATCATATTTACAGACCGTTCTGGCATGAGTGCAGTGGGC  
 CATGTGATGCTAGGAACAATGGATGTCCATCACCCTGGACAAAACCTTTTGAAGATTGCCAAGTTATT  
 TTGACCTTCAGAGGAGGCTGATGATTTTAGAAGACCAATAAGCTATCTTTTAGGTGGCATAACAAGTTGT  
 TTATATTGAAGAATTACAGCCAGTATTGACACTGAAGAATATTACTCTCTTCTGATGTGTTTTATAAT  
 AGACTGTTGAAAAGTGAATACTATTTACCCTCGAAGTTTGCCTGTTTACAAATGATCCTTAACAGTG  
 ACAGATATGCTCCAAGCTTGCATGAACTCGGGCATTTTAATATTCCAACACTCTGTGATCCAGCAAATCT  
 CCAGTGGTTTATTCTACCAAAGCTCAGCAGGCAAGAGAGAACATGAAAAGAAAGGAAGGTTAAAGGTT  
 ATTGAAAATGAATTGATACAGGCATCAACAAAGAAATTTCTTTGGAGAAGTTATATAAAGGCCAGCA  
 TTTCTAGTATACAAATGGTGGATTGTTGTAAGAGACTTCTAGAACAATCACTGCCTTACCTACATGGGAT  
 GCACCTCTGCATTTACATTTTTACTCTGTTATGCAAGATGGAGACCTTTGTATTCTTGGAAATGGAAG  
 AATGGAGAAGCCATTAAG

**ACGCGT**ACGCGGCCGCTCGAGCAGAAACTCATCTCAGAAGAGGATCTGGCAGCAAATGATATCCTGGATT  
 ACAAGGATGACGACGATAAGGTTTAA

**Protein Sequence:**

>RC224319 representing NM\_173826  
 Red=Cloning site Green=Tags(s)

MFCHLRPMRRLCLEKIFPHWPFPSRALSGAEAVNALRPFYFAVHPDFFGQHPVEREINENSLKRLSVYLE  
 NLQKPGFKSLKPTQLTFYVRETDQSSSDGQEPFSTSGFRAVKFTLHTRDLLSTVLYILNSCSLVEHIQS  
 LNTNMHTQPLKEAKRMPDRPIKWDKSYYSFTGFKDPDEDLEQVSRVETTLTSLWDNNGKS AVKCLKNSLP  
 LRKELDRLKDEL SHQLQLSDIRWQRSWGIAHRCSQLHLSRLAQQNLETLLKAKGCTIIFDTRSGMSAVG  
 HVMLGTMVHHHWTKL FERLPSYFDLQRRLMILEDQISYLLGGIQVYIEELQPVL TLEEYYSLLDVFYN  
 RLLKSRILFHPRSLRGLQMI LNSDRYAPSLHELGHFNIP TLCDPANLQWFILTKAQQARENMKRKEELKV  
 IENELIQASTKKFSLEKLYKEP SISSIQMVDCKRRLLEQSLPYLHGMHLCISHFY SVMQDGLCIPWNWK  
 NGEAIK

**TRTRPLEQKLI**SEEDLAANDILDYKDDDDKV

**Chromatograms:**

[https://cdn.origene.com/chromatograms/mk8043\\_d10.zip](https://cdn.origene.com/chromatograms/mk8043_d10.zip)

**Restriction Sites:**

Sgfl-Mlul

**Cloning Scheme:**


**ACCN:** NM\_173826

**ORF Size:** 1488 bp

**OTI Disclaimer:** The molecular sequence of this clone aligns with the gene accession number as a point of reference only. However, individual transcript sequences of the same gene can differ through naturally occurring variations (e.g. polymorphisms), each with its own valid existence. This clone is substantially in agreement with the reference, but a complete review of all prevailing variants is recommended prior to use. [More info](#)

**OTI Annotation:** This clone was engineered to express the complete ORF with an expression tag. Expression varies depending on the nature of the gene.

**Components:** The ORF clone is ion-exchange column purified and shipped in a 2D barcoded Matrix tube containing 10ug of transfection-ready, dried plasmid DNA (reconstitute with 100 ul of water).

- Reconstitution Method:**
1. Centrifuge at 5,000xg for 5min.
  2. Carefully open the tube and add 100ul of sterile water to dissolve the DNA.
  3. Close the tube and incubate for 10 minutes at room temperature.
  4. Briefly vortex the tube and then do a quick spin (less than 5000xg) to concentrate the liquid at the bottom.
  5. Store the suspended plasmid at -20°C. The DNA is stable for at least one year from date of shipping when stored at -20°C.

**RefSeq:** [NM\\_173826.4](#)

**RefSeq Size:** 3379 bp

**RefSeq ORF:** 1491 bp

**Locus ID:** 285343

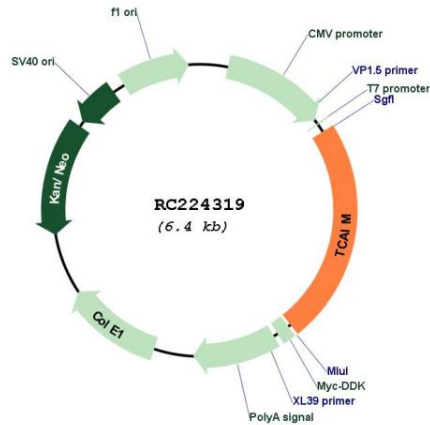
**UniProt ID:** [Q8N3R3](#)

**Cytogenetics:** 3p21.31

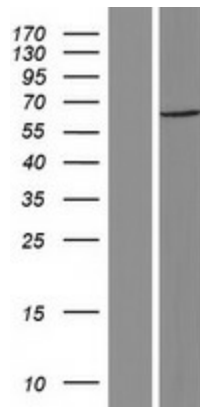
MW: 57.7 kDa

Gene Summary: May regulate T-cell apoptosis.[UniProtKB/Swiss-Prot Function]

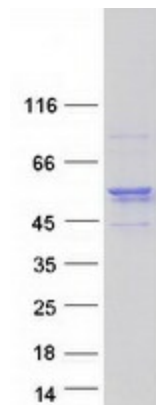
**Product images:**



Circular map for RC224319



Western blot validation of overexpression lysate (Cat# [LY406431]) using anti-DDK antibody (Cat# [TA50011-100]). Left: Cell lysates from untransfected HEK293T cells; Right: Cell lysates from HEK293T cells transfected with RC224319 using transfection reagent MegaTran 2.0 (Cat# [TT210002]).



Coomassie blue staining of purified TCAIM protein (Cat# [TP324319]). The protein was produced from HEK293T cells transfected with TCAIM cDNA clone (Cat# RC224319) using MegaTran 2.0 (Cat# [TT210002]).