

Product datasheet for **RC224314**

SSX4 (NM_005636) Human Tagged ORF Clone

Product data:

Product Type:	Expression Plasmids
Product Name:	SSX4 (NM_005636) Human Tagged ORF Clone
Tag:	Myc-DDK
Symbol:	SSX4
Synonyms:	CT5.4
Mammalian Cell Selection:	Neomycin
Vector:	pCMV6-Entry (PS100001)
E. coli Selection:	Kanamycin (25 ug/mL)
ORF Nucleotide Sequence:	>RC224314 ORF sequence Red=Cloning site Blue=ORF Green=Tags(s)

TTTTGTAATACGACTCACTATAGGGCGGCCGGAATTCGTCGACTGGATCCGGTACCGAGGAGATCTGCC
GCC**CGATCGCC**

ATGAACGGAGACGACGCCTTTGCAAGGAGACCCAGGGATGATGCTCAAATATCAGAGAAGTTACGAAAGG
CCTTCGATGATTTGCCAAATACTTCTCTAAGAAAGAGTGGGAAAAGATGAAATCCTCGGAGAAAATCGT
CTATGTGTATATGAAGCTAAACTATGAGGTCATGACTAACTAGGTTTCAAGGTCACCCTCCCACCTTTC
ATGCGTAGTAAACGGGCTGCAGACTTCCACGGGAATGATTTTGGTAACGATCGAAACCACAGGAATCAGG
TTGAACGTCCTCAGATGACTTTTCGGCAGCCTCCAGAGAATCTTCCGAAGATCATGCCAAGAAGCCAGC
AGAGGAAGAAAATGGTTTGAAGGAAGTGCCAGAGGCATCTGGCCACAAAATGATGGGAAACAGCTGTGC
CCCCGGGAAATCCAAGTACCTTGGAGAAGATCAACAAGACATCTGGACCCAAAAGGGGGAAACATGCCT
GGACCCACAGACTGCGTGAGAGAAAAGCAGCTGGTGGTTTATGAAGAGATCAGCGACCCTGAGGAAGATGA
CGAG

ACGCGTACGCGGCCGCTCGAGCAGAACTCATCTCAGAAGAGGATCTGGCAGCAAATGATATCCTGGATT
ACAAGGATGACGACGATAAGGTTTAA

Protein Sequence:	>RC224314 protein sequence Red=Cloning site Green=Tags(s)
-------------------	--

MNGDDAFARRPRDDAQISEKLRKAFDDIAKYFSKKEWEKMKSSSEKIVVYVMKLNVEVMTKLGFKVTLPPF
MRSKRAADFHGNDFGNDRNHRNQVERPQMTFGSLQRIFFPKIMPKKPAEEENGLKEVPEASGPQNDGKQLC
PPGNPSTLEKINKTSGPKRKGHAWTHRLRERKQLVYVEEISDPEEDDE

TRTRPLEQKLISEEDLAANDILDYKDDDDKV

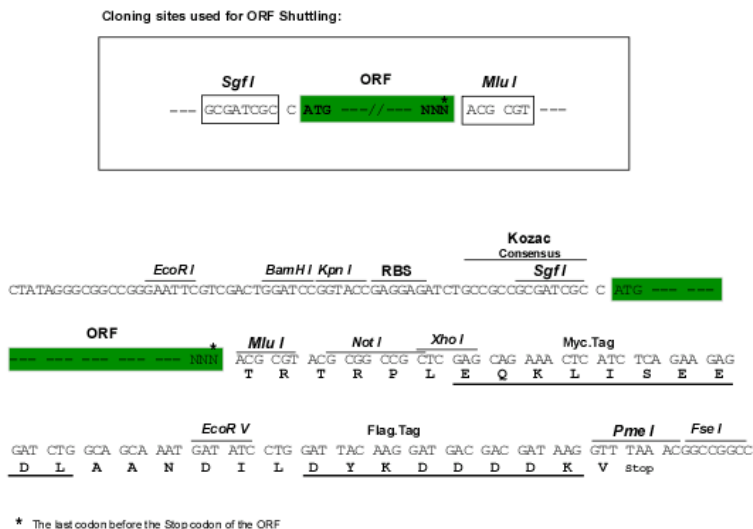


[View online »](#)

Chromatograms: https://cdn.origene.com/chromatograms/mk6415_f09.zip

Restriction Sites: SgfI-MluI

Cloning Scheme:



ACCN: NM_005636

ORF Size: 564 bp

OTI Disclaimer: The molecular sequence of this clone aligns with the gene accession number as a point of reference only. However, individual transcript sequences of the same gene can differ through naturally occurring variations (e.g. polymorphisms), each with its own valid existence. This clone is substantially in agreement with the reference, but a complete review of all prevailing variants is recommended prior to use. [More info](#)

OTI Annotation: This clone was engineered to express the complete ORF with an expression tag. Expression varies depending on the nature of the gene.

Components: The ORF clone is ion-exchange column purified and shipped in a 2D barcoded Matrix tube containing 10ug of transfection-ready, dried plasmid DNA (reconstitute with 100 ul of water).

Reconstitution Method:

1. Centrifuge at 5,000xg for 5min.
2. Carefully open the tube and add 100ul of sterile water to dissolve the DNA.
3. Close the tube and incubate for 10 minutes at room temperature.
4. Briefly vortex the tube and then do a quick spin (less than 5000xg) to concentrate the liquid at the bottom.
5. Store the suspended plasmid at -20°C. The DNA is stable for at least one year from date of shipping when stored at -20°C.

RefSeq: [NM_005636.2](#)

RefSeq Size: 1250 bp

RefSeq ORF: 567 bp

Locus ID: 6759

UniProt ID: [O60224](#)

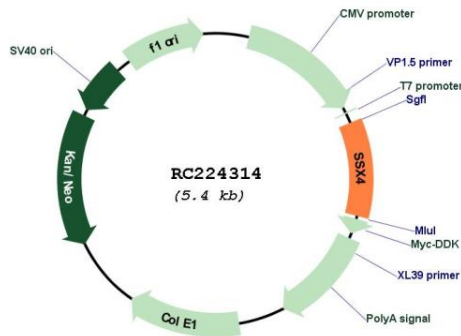
Cytogenetics: Xp11.23

Protein Families: Transcription Factors

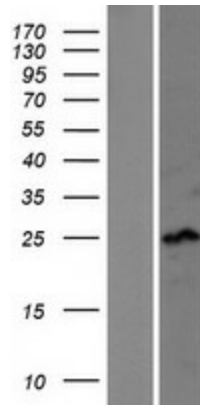
MW: 21.9 kDa

Gene Summary: The product of this gene belongs to the family of highly homologous synovial sarcoma X (SSX) breakpoint proteins. These proteins may function as transcriptional repressors. They are also capable of eliciting spontaneously humoral and cellular immune responses in cancer patients, and are potentially useful targets in cancer vaccine-based immunotherapy. SSX1, SSX2 and SSX4 genes have been involved in the t(X;18) translocation characteristically found in all synovial sarcomas. This translocation results in the fusion of the synovial sarcoma translocation gene on chromosome 18 to one of the SSX genes on chromosome X. Chromosome Xp11 contains a segmental duplication resulting in two identical copies of synovial sarcoma, X breakpoint 4, SSX4 and SSX4B, in tail-to-tail orientation. This gene, SSX4, represents the more telomeric copy. Two transcript variants encoding distinct isoforms have been identified for this gene. [provided by RefSeq, Jul 2008]

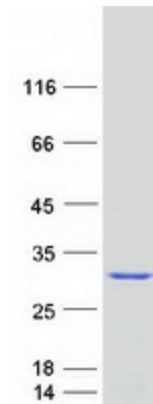
Product images:



Circular map for RC224314



Western blot validation of overexpression lysate (Cat# [LY417167]) using anti-DDK antibody (Cat# [TA50011-100]). Left: Cell lysates from untransfected HEK293T cells; Right: Cell lysates from HEK293T cells transfected with RC224314 using transfection reagent MegaTran 2.0 (Cat# [TT210002]).



Coomassie blue staining of purified SSX4 protein (Cat# [TP324314]). The protein was produced from HEK293T cells transfected with SSX4 cDNA clone (Cat# RC224314) using MegaTran 2.0 (Cat# [TT210002]).