

## Product datasheet for **RC224309**

### C14orf181 (NM\_207442) Human Tagged ORF Clone

#### Product data:

**Product Type:** Expression Plasmids  
**Product Name:** C14orf181 (NM\_207442) Human Tagged ORF Clone  
**Tag:** Myc-DDK  
**Symbol:** C14orf181  
**Synonyms:** FLJ39779  
**Mammalian Cell Selection:** Neomycin  
**Vector:** pCMV6-Entry (PS100001)  
**E. coli Selection:** Kanamycin (25 ug/mL)  
**ORF Nucleotide Sequence:** >RC224309 representing NM\_207442  
Red=Cloning site Blue=ORF Green=Tags(s)

TTTTGTAATACGACTCACTATAGGGCGGCCGGAATTCGTCGACTGGATCCGGTACCGAGGAGATCTGCC  
GCC**CGGATCGCC**

ATGAATACGTACACCCGAGCGCCTCCTCACTCCGAAGACTTTCACTTTCCCCCTTGCACAAAACCGAA  
CATCCCACCCACCACCTCCAAGCTAAAATACCTGGGCGGCCCTCCCACGAAGGGACGCGCTCCA  
GGCGAATGGGGAGGGCCCGAAGTCGGCCTGGGACAGAGGAGCCGGCCACCGCCTCCCGTTCGGAAGC  
GGCAGTGCAGGTGAGGCGCGGCCAGCCTGGGACTGCGCGGTAAAGAGCGGGAGGGCGGAATGCACCG  
CGAAGTTGGCGGGGACGCCACGCACGCCTCGCCTCGGCCTTCTGCACCGTAGGGCCGCCCTCCCGCC  
ACCCCTGGGCACCTGTGACACAGTCTGGGCGAGGGCGGGTCCGCTCCCGCCCTCGGGCCCTCACCGCGG  
CGGGGACGCCGGTTCAGCGAAGGTTAAGGGACTCGCTCCCTCCTCGGCTCCCTCACCTTGAAAGT  
CCCCGAAA

**ACGCGT**ACGCGGCCGCTCGAGCAGAACTCATCTCAGAAGAGGATCTGGCAGCAATGATATCCTGGATT  
ACAAGGATGACGACGATAAGGTTTAA

**Protein Sequence:** >RC224309 representing NM\_207442  
Red=Cloning site Green=Tags(s)  
MNTYTRSASF~~PKTF~~TFPLAQNRTSHPTTSSKLKYLGRPSRRDALQANGEGPEVGPTEEPAHRLPVGS  
GSAGEAAASLGTARVRSGRAECTAKLAGDGHARLASAFLHRRRAALPPPLGTCRPRLEGGSAPALGPSR  
RGRRVSEGLRDSLPLGLSLTLGKSPK

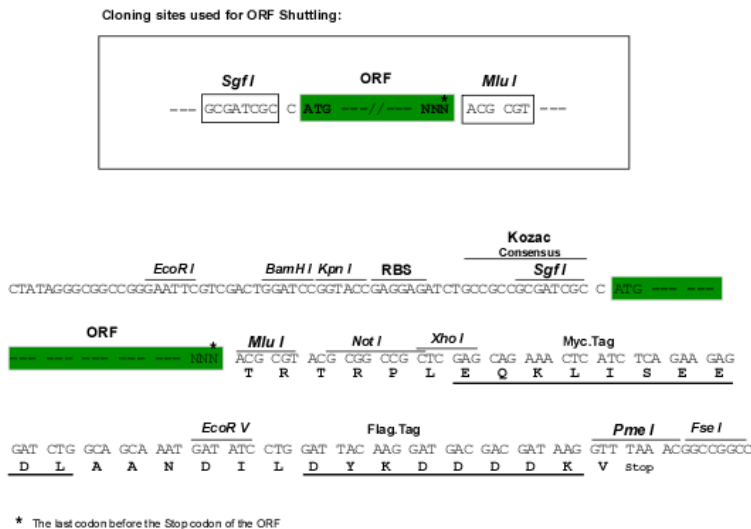
**TRTRPLEQKLISEEDLAANDILDYKDDDDKV**

**Chromatograms:** [https://cdn.origene.com/chromatograms/mk8043\\_e01.zip](https://cdn.origene.com/chromatograms/mk8043_e01.zip)



Restriction Sites: SgfI-MluI

Cloning Scheme:



ACCN: NM\_207442

ORF Size: 498 bp

OTI Disclaimer: The molecular sequence of this clone aligns with the gene accession number as a point of reference only. However, individual transcript sequences of the same gene can differ through naturally occurring variations (e.g. polymorphisms), each with its own valid existence. This clone is substantially in agreement with the reference, but a complete review of all prevailing variants is recommended prior to use. [More info](#)

OTI Annotation: This clone was engineered to express the complete ORF with an expression tag. Expression varies depending on the nature of the gene.

Components: The ORF clone is ion-exchange column purified and shipped in a 2D barcoded Matrix tube containing 10ug of transfection-ready, dried plasmid DNA (reconstitute with 100 ul of water).

Reconstitution Method:

1. Centrifuge at 5,000xg for 5min.
2. Carefully open the tube and add 100ul of sterile water to dissolve the DNA.
3. Close the tube and incubate for 10 minutes at room temperature.
4. Briefly vortex the tube and then do a quick spin (less than 5000xg) to concentrate the liquid at the bottom.
5. Store the suspended plasmid at -20°C. The DNA is stable for at least one year from date of shipping when stored at -20°C.

RefSeq: [NM\\_207442.2](#), [NP\\_997325.2](#)

RefSeq Size: 1727 bp

RefSeq ORF: 500 bp

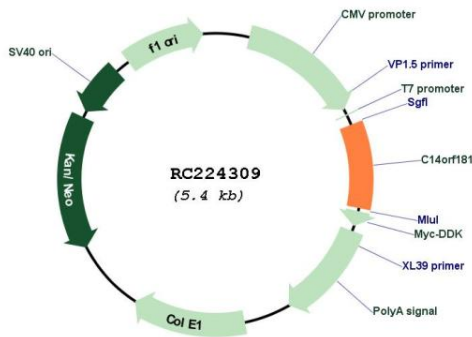
Locus ID: 400223

Cytogenetics: 14q24.1

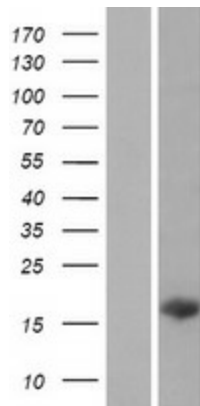
**MW:** 17.1 kDa

**Gene Summary:** DISCONTINUED: This record has been withdrawn by NCBI and HGNC. This record was defined by AK097098.1, which is not sufficient evidence to define a distinct locus.

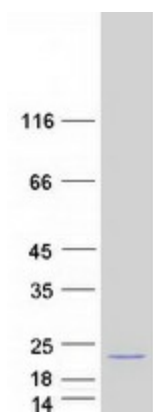
**Product images:**



Circular map for RC224309



Western blot validation of overexpression lysate (Cat# [LY404036]) using anti-DDK antibody (Cat# [TA50011-100]). Left: Cell lysates from untransfected HEK293T cells; Right: Cell lysates from HEK293T cells transfected with RC224309 using transfection reagent MegaTran 2.0 (Cat# [TT210002]).



Coomassie blue staining of purified C14orf181 protein (Cat# [TP324309]). The protein was produced from HEK293T cells transfected with C14orf181 cDNA clone (Cat# RC224309) using MegaTran 2.0 (Cat# [TT210002]).