

Product datasheet for RC224293

DIS (CCAR1) (NM_018237) Human Tagged ORF Clone

Product data:

Product Type:	Expression Plasmids
Product Name:	DIS (CCAR1) (NM_018237) Human Tagged ORF Clone
Tag:	Myc-DDK
Symbol:	DIS
Mammalian Cell Selection:	Neomycin
Vector:	pCMV6-Entry (PS100001)
E. coli Selection:	Kanamycin (25 ug/mL)
ORF Nucleotide Sequence:	>RC224293 representing NM_018237 Red=Cloning site Blue=ORF Green=Tags(s)

TTTTGTAATACGACTCACTATAGGGCGGCCGGAATTCGTCGACTGGATCCGGTACCGAGGAGATCTGCC
GCCCGATCGCC

ATGGCTCAATTTGGAGGACAGAAGAATCCGCCATGGGCTACTCAGTTTACAGCCACTGCAGTATCACAGC
CAGCTGCACTGGGTGTTCAACAGCCATCACTCCTTGGAGCATCTCCTACCATTTATACACAGCAAAGTGC
ATTGGCAGCAGCAGGCCCTTACCACAAACTCCAGCAAATATCAGTTAACACAAACTGCTGCATTGCAG
CAACAAGCCGACGCTGCAGCAGCTGCATTACAACAGCAATATTCACAACCTCAGCAGGCCCTGATAGTG
TGCAACAACAGTTACAGCAACCCAGCAAACCCTTTAACACAGCCAGCTGTTGCATGCCTACAAGCCT
TAGCCTGTCTACTCCTCAGCCAACAGCACAATAACTGTATCATATCCAACCAAGGTCCAGTCAACAG
CAAACCCAGCCTCAGAAGCAGCGTGTTCACAGGGGTGTTACAAAACACTACATGATACGTTTGGATTTG
TGGATGAAGATGTATTCTTTAGCTTAGTGCTGTCAAAGGGAAAACCCCAAGTAGGTGACAGAGTATT
GGTTGAAGCTACTTATAATCCTAATATGCCTTTTAAATGGAATGCACAGAGAATTCAAACACTACCAAAT
CAGAATCAGTCGAAACCCAGCCATTACTGAAGACTCCTCCTGCTGACTTCAGCCAATTGCACCACAGA
CAACATTTGGTGTTCAGACTCAGCCCCAGCCCAGTCACTGCTGCAGGCACAGATTTAGCAGCTTCTAT
TACACCACTATTGCAGACTCAACCACAGCCCTTATTACAGCAGCCTCAGCAAAAAGCTGGTTTATTGCAG
CCTCCTGTTCGTATAGTTTACAGCCACAACCGGCACGACGATTAGATCCCCATCCCGATTTTCAGGAA
GAAATGACAGAGGGGATCAAGTGCTAACAGAAAAGATGATCGAAGTCGTGAGAGAGAGAGAAAAGACG
TAGATCGAGAGAAAGATCACCTCAGAGGAAACGTTCCCGGAAAGATCTCCACGAAGAGAGCGAGAGCGA
TCACCTCGGAGAGTTCGACGTGTTGCCAGTTACACAGTTTCAAGTTTTCTTTAGATTGTC
CCAGTTGTGACATGATGGAAGTAAAGCGCCGTTATCAAAATTTGTATACCTAGTGACTTTTTTGTATG
TCAATTTACATGGGTGGATGCTTCCCTTTGTCAAGACCATTTAGCTGGGAAATTAAGTCAATTTTAT
GTAATGCACAGAGAAGTAGAGTCCTTAGAAAAAATATGGCCATCTTGATCCACCAGATGCTGACCACT
TATACAGTGCAAAGGTAATGCTGATGGCTAGCCCTAGTATGGAAGATTTATCATAAGTCATGTGCTCT
TGCTGAGGACCCACAAGAAGTTCGAGATGGATTCCAACATCCTGCTAGACTTGTTAAGTTTTAGTGGGC
ATGAAAGGCAAGGATGAAGCTATGGCCATTGGAGGCCACTGGTCTCCTTGGTGGATGGACCAGACCCAG
AAAAAGATCCCTCTGTGTTGATTAAGACTGCTATTCTGTTGTTAAGGCTCTGACAGGCATTGATCTAAG



[View online »](#)

TGTGTGCACACAATGGTACCGTTTTGCAGAGATTCGCTACCATCGCCCTGAGGAAACCCACAAGGGGCGT
 ACAGTTCAGCTCATGTGGAGACAGTGGTTTTATTTTCCCGGATGTTTGGCATTGCCTTCCCACCCGCT
 CAGAGTGGGAAACCCCTCTCCCGAGGATACAAGCAGCAGCTGGTCGAGAAGCTTCAGGGTGAACGCAAGGA
 GGCTGATGGAGAACAGGATGAAGAAGAGAAGGATGATGGTGAAGCTAAAGAAATTTTACACCTACCCAT
 TGGTCTAAACTTGATCCAAGACAATGAAGTAAATGACCTCCGAAAAGAATTAGAAAGTCGAGCTCTTA
 GTTCCAAAGGATTAATAATCCAGTTAATAGCCCGATTGACAAAACAGCTTAAAGTAGAGGAACAAAAAGA
 AGAACAGAAGGAGTTAGAGAAATCTGAAAAGAAGAGGATGAGGATGATGATAGGAAATCTGAAGACGAT
 AAAGAGGAAGAAGAAAGGAAACGCTCAAGAGGAAATAGAACGCCAGCGTCGAGAAAAGATATATTTTGC
 CTGATGAACCGGCCATCATTGTACATCCAAATTGGGCTGCAAAAAGTGGCAAGTTTGATTGTAGCATCAT
 GTCTTTGAGTGTCTATTGGACTACAGATTAGAGGATAATAAAGAACATTCATTTGAGGTTTCATTGTTT
 GCGGAACTTTTCAACGAAATGCTTCAAAGAGATTTTGGTGTCCGTATATACAAATCATTACTGTCTCTTC
 CTGAGAAAAGAGGACAAAAAGAAAAGGATAAAAAAGCAAAAAGATGAGAGAAAAGATAAAAAAGAAGA
 AAGAGATGATGAACTGATGAACCAAAACCCAAACGGAGAAAATCAGGCGATGATAAAGATAAAAAAGAA
 GATAGAGATGAAAGGAAGAAAGAAGATAAAAGAAAAGATGATTCTAAAGATGATGATGAACTGAAGAAG
 ATAACAATCAAGATGAATATGACCCTATGGAAGCAGAAGAAGCTGAGGATGAAGAAGATGATAGGGATGA
 GGAAGAAATGACCAACGAGATGACAAAAGAGATATCAACAGATACTGCAAGGAGAGGCCCTCTAAAGAT
 AAGGAAAAGAAAAGACTCAAATGATCACAATTAACAGAGATCTGTTAATGGCTTTTGTATTTTGTATC
 AAAGTCATTGTGGTTACCTTCTTGAAGGATTTGGAAGAAATACTTTTACTCTTGGACTACATCTTTC
 TCGGGCTCAGGTAAGAAGCTTCTTAATAAAGTAGTGCTCCGTGAATCTTGCTTTTACCGGAAATTAACA
 GACACCTCAAAGATGAAGAGAACCATGAAGAGTCTGAGTCATTGCAGGAAGATATGCTAGGAAACAGAT
 TATTACTTCCAACACCAACAGTAAAGCAGGAATCAAAGGATGTGGAAGAAAATGTTGGCCTCATTGTGTA
 CAATGGTCAATGGTAGATGTAGGAAGCCTCTTGCAAAAATTGAAAAGAGCGGAAAAGTAAAGAGCTGAG
 GTAGAACAAGAGCTGCAGTTACTAGAAGAAAAACAGATGAAGATGAAAAACCATATTAATTTGGAGA
 ATTCCAACAAAAGCCTCTCTGGTGAATCAGAGAAGTAAAAAGGACCTTAGTCAGTTACAAGAAAACCT
 AAAGATTTTCGAAAACATGAATTTACAATTTGAAAACCAATGAATAAGCAATCAGAACTTATCTACG
 GTAATGGATGAAATCCACACTGTTCTCAAGAAGGATAATGTAAGAATGAAGACAAAGATCAAAAATCCA
 AGGAGAATGGTGCCAGTGA

ACGCGTACGCGGCCGCTCGAGCAGAACTCATCTCAGAAGAGGATCTGGCAGCAATGATATCCTGGATT
 ACAAGGATGACGACGATAAGGTTTAA

Protein Sequence:

>RC224293 representing NM_018237
 Red=Cloning site Green=Tags(s)

MAQFGGQKNPPWATQFTATAVSQPAALGVQPSLLGASPTIYTQQTALAAAGLTTQTPANYQLTQTAALQ
 QQAAAAAALQQYSQPQQALYSVQQQLQPPQQLLTPAVALPTSLSLSTPQPTAQITVSYTPRSSHQ
 QTQPQKQRFVTFVVTKLHDTFGFVDEDFVFLSAVKGKTPQVGDVRLVEATYNPMPFKWNAQRIQTLPN
 QNQSQTQPLLKTPPAVLQPIAPQTFGVQTQPQPSLLQAQISAASITPLLQTQPQPLLQPPQKAGLLQ
 PPVRIVSQPAPRRLDPPSRFSGRNDRGDQVPRKDDRSRERERRRRSPQRKRSRERSRPRERER
 SPRRRVRRVPRYTVQFSKFLDCPSCDMMELRRRYQNL YIPSDFFDAQFTWVDAFPLSRPFQLGNYCNFY
 VMHREVESLEKNMAILDPPDADHLYSAKVMLMASPSMEDLYHKSCALAEDPQELRDGFQHPARLVKFLVG
 MKGKDEAMAIIGHWSPSLDGPDPPEKDPVSLIKTAIRCKKALTGIDL SVCTQWYRFAEIRYHRPEETHKGR
 TVPAHVETVVLFFPDVWHCLPTRSEWETLSRGYKQQLVEKLQGERKEADGEQDEEEKDDGEAKEISTPTH
 WSKLDPKTMKVNDLRKELESRALSSKGLKSQLIARLTKQLKVEEQKEEQKELEKSEKEEEDDDRKSEDD
 KEEERKRQEEIERQRRRERYILPDEPAIVHPNWAASKGKFDCSIMSLSVLLDYRLEDNKEHSFEVSLF
 AELFNEMLQRDFGVRIYKSLLSLPEKEDKKEKDKKSKKDERKDKKEERDDETPKPKRRKSGDDKDKKE
 DRDERKEDKRKDDSKDDDETEEDNNQDEYDPEAEAEAEDEEDRDEEEMTKRDDKRDINRYCKERPSK
 KEKEKTQMITINRDLMAFVYFDQSHCGYLLEKDL EEIYLTLGLHL SRAQVKLLNKNVVLRESCFYRKL
 DTSKDEENHEESESLQEDMLGNRLLLPTPTVKQESKDVEENVGLIVYNGAMVDVGSLLQKLEKSEKVR
 VEQKLQLLEEKDEDEKTI LNLENSNKSLSGELREVKKDLSQLQENLKI SENMNLQFENQMNKTI RNLST
 VMDEIHTVLKKNVKNEDKDKQSKENGASV

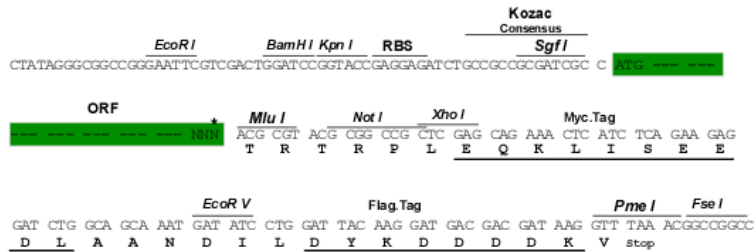
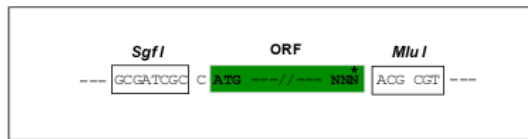
TRTRPLEQKLI SEEDLAANDILDYKDDDDKV

Chromatograms: https://cdn.origene.com/chromatograms/mg3777_h10.zip

Restriction Sites: SgfI-MluI

Cloning Scheme:

Cloning sites used for ORF Shutting:



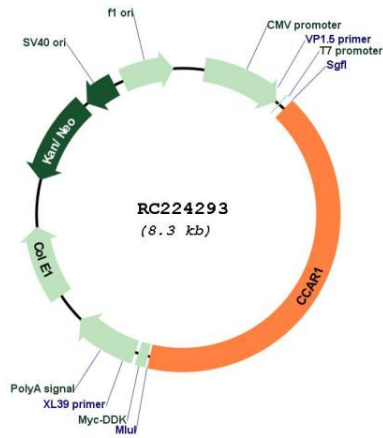
* The last codon before the Stop codon of the ORF

ACCN: NM_018237

ORF Size: 3450 bp

OTI Disclaimer:	The molecular sequence of this clone aligns with the gene accession number as a point of reference only. However, individual transcript sequences of the same gene can differ through naturally occurring variations (e.g. polymorphisms), each with its own valid existence. This clone is substantially in agreement with the reference, but a complete review of all prevailing variants is recommended prior to use. More info
OTI Annotation:	This clone was engineered to express the complete ORF with an expression tag. Expression varies depending on the nature of the gene.
Components:	The ORF clone is ion-exchange column purified and shipped in a 2D barcoded Matrix tube containing 10ug of transfection-ready, dried plasmid DNA (reconstitute with 100 ul of water).
Reconstitution Method:	<ol style="list-style-type: none">1. Centrifuge at 5,000xg for 5min.2. Carefully open the tube and add 100ul of sterile water to dissolve the DNA.3. Close the tube and incubate for 10 minutes at room temperature.4. Briefly vortex the tube and then do a quick spin (less than 5000xg) to concentrate the liquid at the bottom.5. Store the suspended plasmid at -20°C. The DNA is stable for at least one year from date of shipping when stored at -20°C.
RefSeq:	NM_018237.4
RefSeq Size:	3858 bp
RefSeq ORF:	3453 bp
Locus ID:	55749
UniProt ID:	Q8IX12
Cytogenetics:	10q21.3
MW:	132.6 kDa
Gene Summary:	Associates with components of the Mediator and p160 coactivator complexes that play a role as intermediaries transducing regulatory signals from upstream transcriptional activator proteins to basal transcription machinery at the core promoter. Recruited to endogenous nuclear receptor target genes in response to the appropriate hormone. Also functions as a p53 coactivator. May thus play an important role in transcriptional regulation (By similarity). May be involved in apoptosis signaling in the presence of the reindol CD437. Apoptosis induction involves sequestration of 14-3-3 protein(s) and mediated altered expression of multiple cell cycle regulatory genes including MYC, CCNB1 and CDKN1A. Plays a role in cell cycle progression and/or cell proliferation (PubMed:12816952). In association with CALCOCO1 enhances GATA1- and MED1-mediated transcriptional activation from the gamma-globin promoter during erythroid differentiation of K562 erythroleukemia cells (PubMed:24245781). Can act as a both a coactivator and corepressor of AR-mediated transcription. Contributes to chromatin looping and AR transcription complex assembly by stabilizing AR-GATA2 association on chromatin and facilitating MED1 and RNA polymerase II recruitment to AR-binding sites. May play an important role in the growth and tumorigenesis of prostate cancer cells (PubMed:23887938).[UniProtKB/Swiss-Prot Function]

Product images:



Circular map for RC224293