

Product datasheet for RC224291

MPRIP (NM_201274) Human Tagged ORF Clone

Product data:

Product Type:	Expression Plasmids
Product Name:	MPRIP (NM_201274) Human Tagged ORF Clone
Tag:	Myc-DDK
Symbol:	MPRIP
Synonyms:	M-RIP; MRIP; p116Rip; RHOIP3; RIP3
Mammalian Cell Selection:	Neomycin
Vector:	pCMV6-Entry (PS100001)
E. coli Selection:	Kanamycin (25 ug/mL)
ORF Nucleotide Sequence:	>RC224291 representing NM_201274 Red=Cloning site Blue=ORF Green=Tags(s)

TTTTGTAATACGACTCACTATAGGGCGCCGGGAATTCGTCGACTGGATCCGGTACCGAGGAGATCTGCC
GCC**CGATCGCC**

ATGTCGGCAGCCAAGGAGAACCCTGCAGGAAATCCAGGCCAACATCTTCAACAAGAGCAAGTGTGAGA
ACTGCTTCAAGCCCCGCGAGTCGCATCTGCTCAACGACGAGGACCTGACGCAGGCAAAACCCATTTATGG
CGGTTGGCTGCTCCTGGCTCCAGATGGGACCGACTTTGACAACCCAGTGCACCGGTCTCGGAAATGGCAG
CGACGGTCTTTCATCCTTACGAGCACGGCTCTTGCCTACGCCCTGGATGAGATGCCACGACCTTC
CTCAGGGCACCATCAACATGAACAGTGCACAGATGTGGTGGATGGGAGGGCCGCACGGCCAGAAGTT
CTCCCTGTGATTCTGACGCTGAGAAGGAGCATTTCATCCGGGCGGAGACCAAGGAGATCGTCAGTGGG
TGCTGGAGATGCTCATGGTCTATCCCCGACCAACAAGCAGAATCAGAAGAAGAAACGGAAAGTGGAGC
CCCCACACCACAGGAGCCTGGGCTGCCAAGGTGGCTGTTACCAGCAGCAGCAGCAGCAGCAGCAGCAG
CAGCAGCATCCCCAGTGTGAGAAAGTCCCCACCACCAAGTCCACACTCTGGCAGGAAGAAATGAGGACC
AAGGACCAGCCAGATGGCAGCAGCCTGAGTCCAGCTCAGAGTCCCAGCCAGAGCCAGCCTCCTGTGCCA
GCTCCCTGCGGAACTCGGGTGGAGAGCGGCTACTTCTCTGAGAGAAGACCAACAGGACTTGAAGGCTGAA
GAACAGCAGCTGCCCCCGCGCTCTCCCTCCCAGCCCCAGCACCACAGGAGGTCAGGTTCCAGGTTGAA
TTGAAAAGTTTGAGGCTTGACATTGAGAAGGCAGAGCACATGGAGACCAATGCAGTGGGCGCCCTCACC
ATCCAGCGACACAGCCAGGCGCCAGCGAGAAGAGGGGCTTCCCTAGGAAGCGGGACTTACCAATGAA
GCCCCCAGCTCCTCTCCAGACGCTCGGCTTCCCCCTGTCTCCACACCGAAGAGCCAAAGTCACTGG
ACAGGAGGTCCACGGAGCCCTCCGTGACGCCGACCTGCTGAATTTCAAGAAAGGCTGGCTGACTAAGCA
GTATGAGGACGGCCAGTGAAGAAACACTGTTTTGCTCCTCGCGATCAAAGCCTGAGATACTACAGGGAT
TCAGTGGCTGAGGAGGCAGCCGACTTGGATGGAGAAATGACTTGTCCGATGTTACGATGTCACAGAGT
ATCCAGTTCAGAGAACTATGGCTTCCAGATACATACAAAGGAGGGCGAGTTTACCCTGTCGGCCATGAC
ATCTGGGATTCGGCGGAAGTGGATCCAGACCATCATGAAGCACGTGCACCGACACTGCCCGGATGTG



[View online >](#)

ACCAGCTCGTTGCCAGAGGAAAAACAAGAGCAGCTGCTCTTTTGAGACCTGCCGAGGCCTACTGAGA
 AGCAAGAGGCAGAGCTGGGGGAGCCGGACCCTGAGCAGAAGAGGAGCCGCGCACGGGAGCGGAGCGGAGA
 GGGCCGCTCCAAGACCTTTGACTGGGCTGAGTTCGGTCCCATCCAGCAGGCCCTGGCTCAGGAGCGGGT
 GGCGGCTGGGGCTGCTGACACCCACGAGCCCTGCGCCCTGAGGCGGAGCCTGGGAGCTGGAGCGGG
 AGCGTGACCGGAGGCGGGAGGAGCGCCGAAGCGCTTCGGATGCTCGACGCCACAGACGGGCCAGGCAC
 TGAGGATGCAGCCCTGCCATGGAGTGGACCGGAGCCAGGGCTGCCTATGAGCGACCTCAAACGCAT
 AACGTCCAGTGGAGATTGAGCAGCGGTGGCATCAGGTGGAGACCACACCTCTCCGGGAAGAGAAGCAGG
 TGCCCATCGCCCCGTCCACCTGTCTTCTGAAGATGGGGGTGACCGGCTCTCCACACAGAGCTGACCTC
 TGTGCTCGAGAAGGAGCTGGAGCAGAGCCAGAAGGAGGCCTCAGACCTTCTGGAGCAGAACC GGCTCCTG
 CAGGACCAGCTGAGGGTGGCCCTGGGCCGGGAGCAGAGCGCCCTGAGGGCTACGTGCTGCAGGCCACGT
 GCGAGCGAGGGTTTGACGCAATGGAAGAAACGCACCAGAAGAAGATTGAAGATCTCCAGAGGCAGCACCA
 GCGGGAGCTAGAGAACTTCGAGAAGAGAAAGACCGCCTCTAGCCGAGGAGACAGCGGCCACCATCTCA
 GCCATCGAAGCCATGAAGAACGCCACCACGGGAGGAAATGGAGCGGGAGCTGGAGAAGAGCCAGCGGTCCC
 AGATCAGCAGCGTCAACTCGGATGTTGAGGCCCTGCGGCCAGTACCTGGAGGAGCTGCAGTCGGTGCA
 GCGGGAAGTGGAGTCTCTCGGAGCAGTACTCGCAGAAGTGCCTGGAGAATGCCATCTGGCCAGGCG
 CTGGAGGCGGAGCGGAGGCCCTGCGGCAGTGCCAGCGTGAGAACCAGGAGCTCAATGCCACAACCAGG
 AGCTGAACAACCCCTGGCTGCAGAGATCACACGGTTGCGGACGCTGCTGACTGGGGACGGCGTGGGGA
 GGCCACTGGGTACCCCTTGACAGGGCAAGGATGCCTATGAACTAGAGGTCTTATTGCGGGTAAAGGAA
 TCGGAAATACAGTACCTGAAACAGGAGATTAGCTCCCTCAAGGATGAGCTGCAGACGGCACTGCGGGACA
 AGAAGTACGCAAGTGACAAGTACAAAGACATCTACACAGAGCTCAGCATCGCGAAGGCTAAGGCTGACTG
 TGACATCAGCAGGTTGAGGAGCAGCTCAAGGCTGCAACGGAAGCACTGGGGGAGAAGTCCCCTGACAGT
 GCCACGGTGTCCGGATATGATATAATGAAATCTAAAAGCAACCTGACTTCTTGAAGAAAGACAGATCCT
 GTGTCACCCGGCAACTCAGAAACATCAGGTCCAAGTCCGTAATTGAGCAGGTCTCGTGGGATACC

ACGCGTACGCGGCCGCTCGAGCAGAAACTCATCTCAGAAGAGGATCTGGCAGCAATGATATCCTGGATT
 ACAAGGATGACGACGATAAGGTTTAA

Protein Sequence:

>RC224291 representing NM_201274
 Red=Cloning site Green=Tags(s)

MSAAKENPCRKFQANIFNKSCKQNCFKPRESHLNDEDLTQAKPIYGGWLLLAPDGTDFDNPVHRSRKWQ
 RRFIFILYEHGLLRYALDEMPPTLPQGTINMNQCTDVVDGEGRTGQKFSLCILTPEKEHFIRAETKEIVSG
 WLEMLMVPRTNKQNKKKRKEPPTPQEPGPAKVAVTSSSSSSSSSSIPSAEKVPTTKSTLWQEEMRT
 KDQPDGSSLSPAQSPSQSPPAASSLREPGLESKEEESAMSSDRMDCGRKVRVESGYFSLEKTKQDLKAE
 EQQLPPPLSPPSPSTPNHRRSQVIEKFEALDIEKAEHMETNAVGPSSDTRQGRSEKRAFPRKRDFTNE
 APPAPLPDASASPLSPHRRAKSLDRRSTEPSVTPDLLNFKKGWLTQYEDGQWKKHWFVLADQSLRYRD
 SVAEAAADLDGEIDL SACYDVTEYPVQRNYGFQIHTKEGEFTLSAMTSGIRRNWIQTIMKHVHPTTAPDV
 TSSLPEEKNKSSCSFETCPRPTEKQEAELGEPDPEQKRSRARRRRREGSKTFDWAEFRPIQQALAQERV
 GVGVPADTHEPLRPEAEPGELEERARRREERRKRFGMLDATDGPGETAALRMEVDRSPGLPMSDLKTH
 NVHVEIEQRWHQVETTPLEEKQVPIAPVHLSSEDDGGDRLSTHELTSLLLEKELEQSQKEASDLLQNRLL
 QDQLRVALGREQSAREGYVLQATCERGFAMEETHQKKIEDLQRQHORELEKLRREEKDRLLAEETAATIS
 AIEAMKNAHREEMERELEKSQRSQISSVNSDVEALRRQYLEELQSVQRELEVLSEQYSQKCLENAHLAQA
 LEAERQALRQCQRENQELNAHNQELNNRLAAEITRLRLLTGDGGGEATGSPLAQGKDAYEVLRLVKE
 SEIQYLKQEISSLKDELQTLRDKKYASDKYKDIYTELSIAKAKADCDISRLKEQLKAATEALGEKSPDS
 ATVSGYDIMKSKSNPDFLKKDRSCVTRQLRNIRSKSVIEQVSWDT

TRTRPLEQKLISEEDLAANDILDYKDDDDKV

Chromatograms:

https://cdn.origene.com/chromatograms/mk8102_f12.zip

Restriction Sites:

Sgfl-MluI

Cloning Scheme:


ACCN: NM_201274

ORF Size: 3075 bp

OTI Disclaimer: The molecular sequence of this clone aligns with the gene accession number as a point of reference only. However, individual transcript sequences of the same gene can differ through naturally occurring variations (e.g. polymorphisms), each with its own valid existence. This clone is substantially in agreement with the reference, but a complete review of all prevailing variants is recommended prior to use. [More info](#)

OTI Annotation: This clone was engineered to express the complete ORF with an expression tag. Expression varies depending on the nature of the gene.

Components: The ORF clone is ion-exchange column purified and shipped in a 2D barcoded Matrix tube containing 10ug of transfection-ready, dried plasmid DNA (reconstitute with 100 ul of water).

- Reconstitution Method:**
1. Centrifuge at 5,000xg for 5min.
 2. Carefully open the tube and add 100ul of sterile water to dissolve the DNA.
 3. Close the tube and incubate for 10 minutes at room temperature.
 4. Briefly vortex the tube and then do a quick spin (less than 5000xg) to concentrate the liquid at the bottom.
 5. Store the suspended plasmid at -20°C. The DNA is stable for at least one year from date of shipping when stored at -20°C.

RefSeq: [NM_201274.4](#)

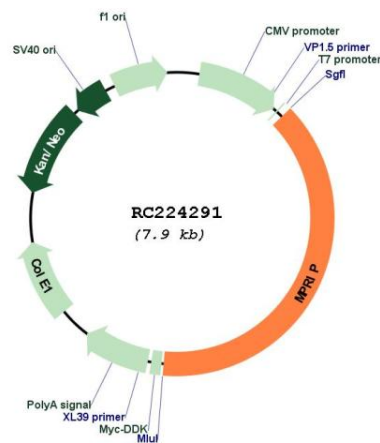
RefSeq Size: 11023 bp

RefSeq ORF: 3078 bp

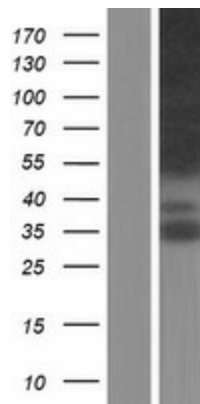
Locus ID: 23164

UniProt ID: [Q6WCQ1](#)
Cytogenetics: 17p11.2
Protein Families: Druggable Genome
MW: 116.5 kDa
Gene Summary: Targets myosin phosphatase to the actin cytoskeleton. Required for the regulation of the actin cytoskeleton by RhoA and ROCK1. Depletion leads to an increased number of stress fibers in smooth muscle cells through stabilization of actin fibers by phosphorylated myosin. Overexpression of MRIP as well as its F-actin-binding region leads to disassembly of stress fibers in neuronal cells.[UniProtKB/Swiss-Prot Function]

Product images:



Circular map for RC224291



Western blot validation of overexpression lysate (Cat# [LY404508]) using anti-DDK antibody (Cat# [TA50011-100]). Left: Cell lysates from untransfected HEK293T cells; Right: Cell lysates from HEK293T cells transfected with RC224291 using transfection reagent MegaTran 2.0 (Cat# [TT210002]).