

Product datasheet for RC224287

MASPIN (SERPINB5) (NM_002639) Human Tagged ORF Clone

Product data:

Product Type:	Expression Plasmids
Product Name:	MASPIN (SERPINB5) (NM_002639) Human Tagged ORF Clone
Tag:	Myc-DDK
Symbol:	SERPINB5
Synonyms:	maspin; PI5
Vector:	pCMV6-Entry (PS100001)
E. coli Selection:	Kanamycin (25 ug/mL)
Cell Selection:	Neomycin
ORF Nucleotide Sequence:	>RC224287 representing NM_002639 Red=Cloning site Blue=ORF Green=Tags(s)

TTTTGTAATACGACTCACTATAGGGCGCCGGAATTCGTCGACTGGATCCGGTACCGAGGAGATCTGCC
GCC**CGATCGCC**

ATGGATGCCCTGCAACTAGCAAATTCGGCTTTTGCCGTTGATCTGTTCAAACAATATGTGAAAAGGAGC
CACTGGGCAATGTCTCTCTCCAATCTGTCTCCACCTCTCTGTCACCTGCTCAAGTGGGTGCTAA
AGGTGACACTGCAAATGAAATTGGACAGTTCTTCATTTTGAAAATGTCAAAGATGTACCCTTTGGATT
CAAACAGTAACATCGGATGTAACAACAACTAGTTCCTTTTACTCACTGAAACTAATCAAGCGGCTCTACG
TAGACAAATCTCTGAATCTTTCTACAGAGTTCATCAGCTCTACGAAGAGACCCTATGCAAAGGAATTGGA
AACTGTTGACTTCAAAGATAAATTGGAAGAAACGAAAGGTGAGTCAACAACCTCAATTAAGGATCTCACA
GATGGCCACTTTGAGAACATTTAGCTGACAACAGTGTGAACGACCAGACCAAAATCCTTGTGGTTAATG
CTGCCTACTTTGTTGGCAAGTGGATGAAGAAATTTCTGAATCAGAAACAAAAGAATGTCCTTTCAGAGT
CAACAAGACAGACACCAACCAGTGCAGATGATGAACATGGAGGCCACGTTCTGTATGGGAAACATTGAC
AGTATCAATTGTAAGATCATAGAGCTTCTTTTCAAAAATAGCATCTCAGCATGTTATCCTACTACCCA
AGGATGTGGAGGATGAGTCCACAGGCTTGAGAAGATTGAAAAACAACCTCAACTCAGACTGCTCACA
GTGGACTAATCCAGCACCATGGCCAATGCCAAGGTCAAACCTCCATTCCAAAATTTAAGGTGGAAAAG
ATGATTGATCCCAAGGCTTGCTGGAAAATCTAGGGCTGAAACATATCTTCAAGCAGAACACATCTGATT
TCTCTGGAATGTCAGAGACCAAGGGAGTGGCCCTATCAAATGTTGTCCACAAAAGTGTGCTTAGAAAATAAC
TGAAGATGGTGGGATTCCATAGAGGTGCCAGGAGCACGGATCTGCAGCACAAGGATGAATTGAATGCT
GACCATCCCTTTATTTACATCATCAGGCACAACAAAACCTGAAACATCATTTTCTTTGGCAAATTCTGTT
CTCCT

ACGCGTACGCGGCCGCTCGAGCAGAAACTCATCTCAGAAGAGGATCTGGCAGCAAATGATATCCTGGATT
ACAAGGATGACGACGATAAGGTTTAA



[View online »](#)

Protein Sequence: >RC224287 representing NM_002639
 Red=Cloning site Green=Tags(s)

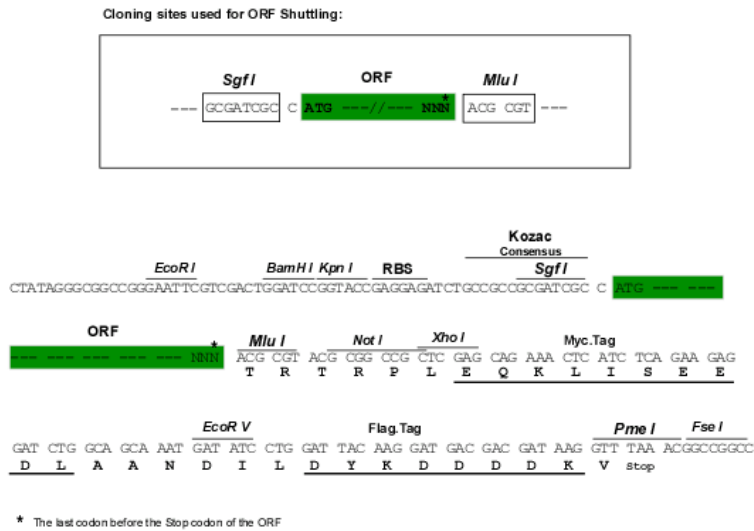
MDALQLANSFAVDL FKQLCEKEPLGNVLFSPICLSTSLSLAQVGAKGDTANEIGQVLHFENVKDVPFQF
 QTVTSDVNKLS SFYSLKLIKRL YVDKSLNLSTEFISSTKRPYAKELETVDKDKLEETKGQINNSIKDLT
 DGHFENILADNSVNDQTKILVVNAAYFVGKWMKKFPESETKPCFRVNTDTPVQMMNMEATFCMGNID
 SINCKIIELPFQNKHLSMFILLPKDVEDESTGLEKIEKQLNSESLSQWTPSTMANAKVKLSIPKFKVEK
 MIDPKACLENLGLKHIFSEDTSDFSGMSETKGVALSNNVHKVCLEITEDGGDSIEVPGARILQHKDELNA
 DHPFIYIIRHNKTRNIIFFGKFCSP

TRTRPLEQKLISEEDLAANDILDYKDDDDKV

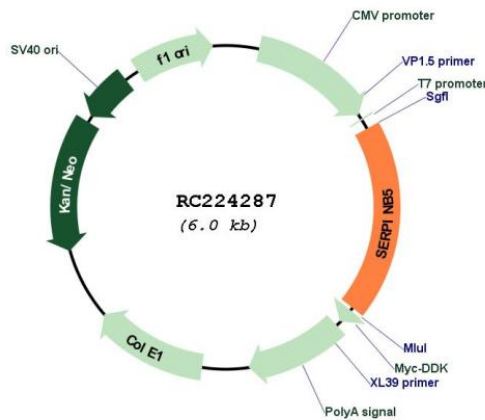
Chromatograms: https://cdn.origene.com/chromatograms/mg2847_a08.zip

Restriction Sites: SgfI-MluI

Cloning Scheme:

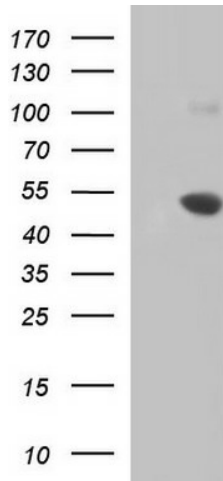


Plasmid Map:

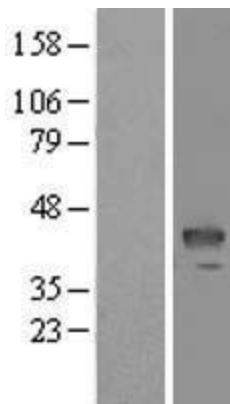


ACCN:	NM_002639
ORF Size:	1125 bp
OTI Disclaimer:	The molecular sequence of this clone aligns with the gene accession number as a point of reference only. However, individual transcript sequences of the same gene can differ through naturally occurring variations (e.g. polymorphisms), each with its own valid existence. This clone is substantially in agreement with the reference, but a complete review of all prevailing variants is recommended prior to use. More info
OTI Annotation:	This clone was engineered to express the complete ORF with an expression tag. Expression varies depending on the nature of the gene.
Components:	The ORF clone is ion-exchange column purified and shipped in a 2D barcoded Matrix tube containing 10ug of transfection-ready, dried plasmid DNA (reconstitute with 100 ul of water).
Reconstitution Method:	<ol style="list-style-type: none">1. Centrifuge at 5,000xg for 5min.2. Carefully open the tube and add 100ul of sterile water to dissolve the DNA.3. Close the tube and incubate for 10 minutes at room temperature.4. Briefly vortex the tube and then do a quick spin (less than 5000xg) to concentrate the liquid at the bottom.5. Store the suspended plasmid at -20°C. The DNA is stable for at least one year from date of shipping when stored at -20°C.
RefSeq:	NM_002639.5
RefSeq Size:	2558 bp
RefSeq ORF:	1128 bp
Locus ID:	5268
UniProt ID:	P36952
Cytogenetics:	18q21.33
Protein Families:	Druggable Genome, Secreted Protein
Protein Pathways:	p53 signaling pathway
MW:	41.9 kDa
Gene Summary:	Tumor suppressor. It blocks the growth, invasion, and metastatic properties of mammary tumors. As it does not undergo the S (stressed) to R (relaxed) conformational transition characteristic of active serpins, it exhibits no serine protease inhibitory activity. [UniProtKB/Swiss-Prot Function]

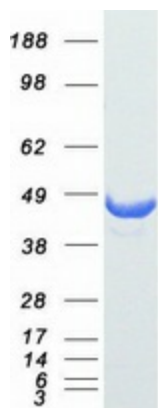
Product images:



HEK293T cells were transfected with the pCMV6-ENTRY control (Cat# [PS100001], Left lane) or pCMV6-ENTRY SERPINB5 (Cat# RC224287, Right lane) cDNA for 48 hrs and lysed. Equivalent amounts of cell lysates (5 ug per lane) were separated by SDS-PAGE and immunoblotted with anti-SER antibody (Cat# [TA590676]). Positive lysates [LY419192] (100ug) and [LC419192] (20ug) can be purchased separately from OriGene.



Western blot validation of overexpression lysate (Cat# [LY419192]) using anti-DDK antibody (Cat# [TA50011-100]). Left: Cell lysates from untransfected HEK293T cells; Right: Cell lysates from HEK293T cells transfected with RC224287 using transfection reagent MegaTran 2.0 (Cat# [TT210002]).



Coomassie blue staining of purified SERPINB5 protein (Cat# [TP324287]). The protein was produced from HEK293T cells transfected with SERPINB5 cDNA clone (Cat# RC224287) using MegaTran 2.0 (Cat# [TT210002]).