

## Product datasheet for **RC224279**

### SMOC1 (NM\_022137) Human Tagged ORF Clone

#### Product data:

Product Type:	Expression Plasmids
Product Name:	SMOC1 (NM_022137) Human Tagged ORF Clone
Tag:	Myc-DDK
Symbol:	SMOC1
Synonyms:	OAS
Mammalian Cell Selection:	Neomycin
Vector:	pCMV6-Entry (PS100001)
E. coli Selection:	Kanamycin (25 ug/mL)



[View online »](#)

ORF Nucleotide  
Sequence:

>RC224279 ORF sequence  
Red=Cloning site Blue=ORF Green=Tags(s)

TTTTGTAATACGACTCACTATAGGGCGGCCGGAATTCGTCGACTGGATCCGGTACCGAGGAGATCTGCC  
GCCGCGATCGCC

ATGCTGCCCGCGCTGCGCCCGCTGCTCAGCCCCACTTGCTGCTGGTGTGGTGCAGCTGTCCCTG  
CTCGCGCCACCCACACCAGGCCCCAGGTTTCTAATAAGTGACCGTGACCCACAGTGCAACCTCCACTG  
CTCCAGGACTCAACCCAAACCCATCTGTGCCTCTGATGGCAGGTCTACGAGTCCATGTGTGAGTACCAG  
CGAGCCAAGTGCCGAGACCCGACCTGGGCGTGGTGCATCGAGGTAGATGCAAAGATGCTGGCCAGAGCA  
AGTGTGCGCTGGAGCGGGCTCAAGCCCTGGAGCAAGCCAAGAAGCCTCAGGAAGCTGTGTTTGTCCAGA  
GTGTGGCAGGATGGCTCCTTTACCCAGGTGCAGTGCCATACTTACACTGGTACTGCTGGTGTGCACC  
CCGGATGGGAAGCCCATCAGTGGCTCTTCTGTGCAGAATAAACTCCTGTATGTTCAAGTTCAGTACCCG  
ACAAGCCCTTGAGCCAGGTAACCTCAGGAAGGAAAGATGACGGGTCTAAGCCGACACCCACGATGGAGAC  
CCAGCCGGTGTTCGATGGAGATGAAATCACAGCCCAACTCTATGGATTAACACTTGGTGTCAAGGAC  
TCCAAACTGAACAACACCAACATAAGAAATTCAGAGAAAGTCTATTCGTGTGACCAAGGAGAGGCAGAGTG  
CCCTGGAAGAGGCCAGCAGAATCCCGTGAGGGTATTGTCATCCCTGAATGTGCCCTGGGGGACTCTA  
TAAGCCAGTGCAATGCCACAGTCCACTGGCTACTGCTGGTGTGTGCTGGTGGACACAGGGCGCCCGCTG  
CCTGGGACCTCCACACGCTACGTGATGCCAGTTGTGAGAGCGACGCCAGGGCCAAGACTACAGAGGCGG  
ATGACCCCTTCAAGGACAGGGAGCTACCAGGCTGTCCAGAAGGGAAGAAAATGGAGTTTATCACCAGCCT  
ACTGGATGCTCTCACCCTGACATGGTTTCAAGCCATTAACCTCAGCAGCGCCCACTGGAGGTGGGAGGTT  
TCAGAGCCAGACCCAGCCACACCCTGGAGGAGCGGGTAGTGCAGTGGTATTTTCAAGCAGCTGGACAGCA  
ATAGCAGCAACGACATTAACAAGCGGGAGATGAAGCCCTTCAAGCGCTACGTGAAGAAGAAGCCAAGCC  
CAAGAAATGTGCCCGCGCTTTCACCGACTACTGTGACCTGAACAAAGACAAGGTCAATTTCACTGCCTGAG  
CTGAAGGCTGCCTGGGTGTTAGCAAAGAAGTAGGACGCCTCGTC

ACGCGTACGCGCGCGCTCGAGCAGAACTCATCTCAGAAGAGGATCTGGCAGCAATGATATCCTGGATT  
ACAAGGATGACGACGATAAGGTTTAA

## Protein Sequence:

>RC224279 protein sequence  
Red=Cloning site Green=Tags(s)

MLPARCARLLTPHLLLVLVQLSPARGHRTTGPRFLISDRDPQCNLHCSRTQPKPICASDGRSYESMCEYQ  
RAKCRDPTLGVVHRGRCKDAGQSKRLERAQALEQAKKPQEAQVPECGEDGSFTQVQCHTYTGYCWCVT  
PDGKPIISGSSVQNKTPVCSGSVTDKPLSQGNSGRKDDGSKPTPTMETQPVFDGDEITAPTLWIKHLVIKD  
SKLNNTNIRNSEKVYSCDQERQSALEEAQNPREGIVIPCAPGGLYKPVQCHQSTGYCWCVLVDTGRPL  
PGTSTRYVMPSCESDARAKTTEADDPFKDRELPGCPEGKKMEFITSLLDALTTDMVQAINSAPTGGGRF  
SEPDPSTLEERVVHWYFSQLDSNSNDINKREMKPFKRYVKKKAKPKKARRFTDYCDLNKDKVISLPE  
LKGCLGVSKEVGRLV

TRTRPLEQKLISEEDLAANDILDYKDDDDKV

## Chromatograms:

[https://cdn.origene.com/chromatograms/mk6431\\_b08.zip](https://cdn.origene.com/chromatograms/mk6431_b08.zip)

## Restriction Sites:

SgfI-MluI

**Cloning Scheme:**


**ACCN:** NM\_022137

**ORF Size:** 1013 bp

**OTI Disclaimer:** The molecular sequence of this clone aligns with the gene accession number as a point of reference only. However, individual transcript sequences of the same gene can differ through naturally occurring variations (e.g. polymorphisms), each with its own valid existence. This clone is substantially in agreement with the reference, but a complete review of all prevailing variants is recommended prior to use. [More info](#)

**OTI Annotation:** This clone was engineered to express the complete ORF with an expression tag. Expression varies depending on the nature of the gene.

**Components:** The ORF clone is ion-exchange column purified and shipped in a 2D barcoded Matrix tube containing 10ug of transfection-ready, dried plasmid DNA (reconstitute with 100 ul of water).

- Reconstitution Method:**
1. Centrifuge at 5,000xg for 5min.
  2. Carefully open the tube and add 100ul of sterile water to dissolve the DNA.
  3. Close the tube and incubate for 10 minutes at room temperature.
  4. Briefly vortex the tube and then do a quick spin (less than 5000xg) to concentrate the liquid at the bottom.
  5. Store the suspended plasmid at -20°C. The DNA is stable for at least one year from date of shipping when stored at -20°C.

**RefSeq:** [NM\\_022137.1](#), [NM\\_022137.2](#), [NM\\_022137.3](#), [NM\\_022137.4](#), [NM\\_022137.5](#), [NP\\_071420.1](#)

**RefSeq Size:** 3713 bp

**RefSeq ORF:** 1305 bp

**Locus ID:** 64093

**UniProt ID:** [Q9H4F8](#)

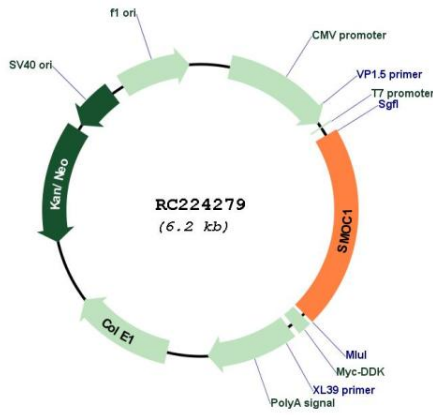
**Cytogenetics:** 14q24.2

**Protein Families:** Secreted Protein

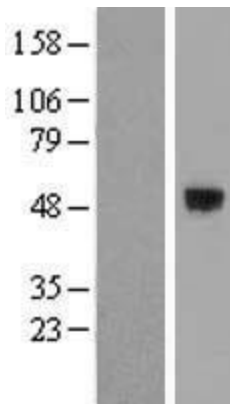
**MW:** 48.3 kDa

**Gene Summary:** This gene encodes a multi-domain secreted protein that may have a critical role in ocular and limb development. Mutations in this gene are associated with microphthalmia and limb anomalies. Alternatively spliced transcript variants encoding different isoforms have been found for this gene. [provided by RefSeq, Mar 2011]

**Product images:**



Circular map for RC224279



Western blot validation of overexpression lysate (Cat# [LY411742]) using anti-DDK antibody (Cat# [TA50011-100]). Left: Cell lysates from untransfected HEK293T cells; Right: Cell lysates from HEK293T cells transfected with RC224279 using transfection reagent MegaTran 2.0 (Cat# [TT210002]).