

Product datasheet for RC224273

KLF16 (NM_031918) Human Tagged ORF Clone

Product data:

Product Type: Expression Plasmids
Product Name: KLF16 (NM_031918) Human Tagged ORF Clone
Tag: Myc-DDK
Symbol: KLF16
Synonyms: BTEB4; DRRF; NSLP2
Mammalian Cell Selection: Neomycin
Vector: pCMV6-Entry (PS100001)
E. coli Selection: Kanamycin (25 ug/mL)
ORF Nucleotide Sequence: >RC224273 representing NM_031918
 Red=Cloning site Blue=ORF Green=Tags(s)

TTTTGTAATACGACTCACTATAGGGCGGCCGGAATTCGTCGACTGGATCCGGTACCGAGGAGATCTGCC
 GCC**CGATCGCC**

ATGTCGGCGGCCGTGGCGTGCCTGGATTACTTCGCCGCCGACGTGCTCATGGCCATCTCTTCGGGCGCCG
 TGGTGCACCGGGCGGCCCGGCCCGAGGGCGCGGGCCCGCCCGGCTGGATGTGCGCGGGCGCG
 CCGCGAGCGCCTCACCCGGACCCCGGGCCACCCCGCCGCCCGCCCGCTTCTGGCCGGGCCCC
 GCGCCGCGCGCGCCACCTGCTGGCCGCCAGCATCCTGGCCGACCTGCGCGGGGACCCGGAGCCG
 CCCCGGGGGCGCCTCGCCCGCCTCCTCCTCCTCAGCCGCTCGTCCCCGTCCTCGGGCCGCGCCCGG
 CGCCGCGCCTCCGCCGCGCAAGAGCCACCGCTGTCCCTTCCCGGACTGCGCCAAAGCCTACTACAAG
 TCCTCGCACCTAAAGTCGCACCTGCGGACGCACACAGGGGAACGCCCTTTGCTTGTGACTGGCAGGGCT
 GCGACAAGAAGTTCGCCGCTCCGACGAGCTGGCCCGCCACCACCGGACGCACACGGGCGAGAAGCGCTT
 CTCTGCCCTCTGTGCTCCAAGCGCTTCAACCGCAGTGACCACCTGGCCAAGCACGCCCGCCGCCACCC
 GGCTTCCACCCGGACCTGCTCCGGCGCCTGGTGGCCGAGTACCTCCCCAGCGACTCGTGCCTGCA
 GCCTGGCCGGGAGCCCTGCGCCAGCCCGCGCCAGCCAGCCCGCAGGCCGCTG

ACGCGTACGCGGCCGCTCGAGCAGAACTCATCTCAGAAGAGGATCTGGCAGCAAATGATATCCTGGATT
 ACAAGGATGACGACGATAAGGTTTAA



[View online »](#)

Protein Sequence: >RC224273 representing NM_031918
Red=Cloning site Green=Tags(s)

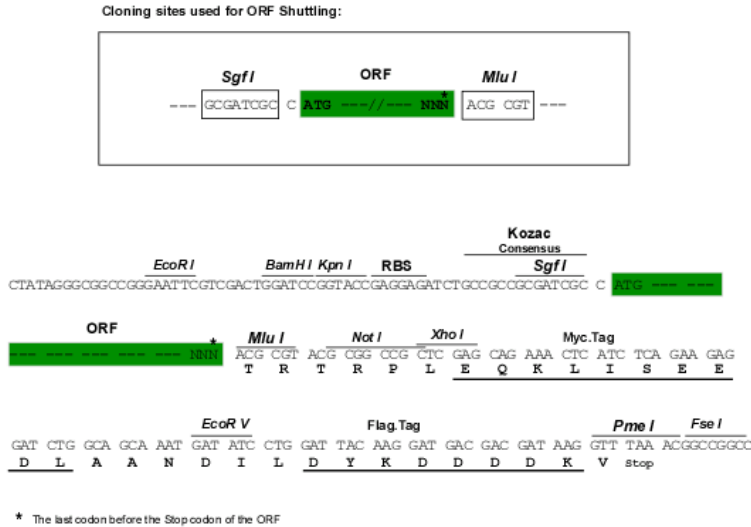
MSAAVACVDYFAADVLMAISSGAVVHRGRPGPEGAGPAAGLDVRAARREASPGTGP PPPPPAASGPGP
 GAAAAPHLLAASILADLRGGPGAAPGGASPSSSSAASSPSSGRAPGAAPSAAAKSHRCPFPDCAKAYYK
 SSKLKSHLRHTHTGERPFACDWQGCDDKFFARSDELARHHRHTHTGEKRFSCPLCSKRFTRSDHLAKHARRHP
 GFHPDLLRRPGARSTSPSDSLPCSLAGSPAPSPAPSPAPAGL

TRTRPLEQKLISEEDLAANDILDYKDDDDKV

Chromatograms: https://cdn.origene.com/chromatograms/mg3784_g11.zip

Restriction Sites: SgfI-MluI

Cloning Scheme:



ACCN: NM_031918

ORF Size: 756 bp

OTI Disclaimer: The molecular sequence of this clone aligns with the gene accession number as a point of reference only. However, individual transcript sequences of the same gene can differ through naturally occurring variations (e.g. polymorphisms), each with its own valid existence. This clone is substantially in agreement with the reference, but a complete review of all prevailing variants is recommended prior to use. [More info](#)

OTI Annotation: This clone was engineered to express the complete ORF with an expression tag. Expression varies depending on the nature of the gene.

Components: The ORF clone is ion-exchange column purified and shipped in a 2D barcoded Matrix tube containing 10ug of transfection-ready, dried plasmid DNA (reconstitute with 100 ul of water).

Reconstitution Method:

1. Centrifuge at 5,000xg for 5min.
2. Carefully open the tube and add 100ul of sterile water to dissolve the DNA.
3. Close the tube and incubate for 10 minutes at room temperature.
4. Briefly vortex the tube and then do a quick spin (less than 5000xg) to concentrate the liquid at the bottom.
5. Store the suspended plasmid at -20°C. The DNA is stable for at least one year from date of shipping when stored at -20°C.

RefSeq: [NM_031918.4](#)

RefSeq Size: 1133 bp

RefSeq ORF: 759 bp

Locus ID: 83855

UniProt ID: [Q9BXK1](#)

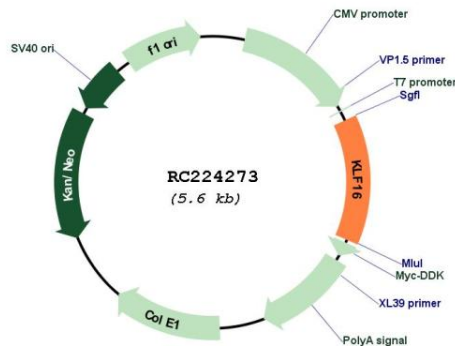
Cytogenetics: 19p13.3

Protein Families: Druggable Genome

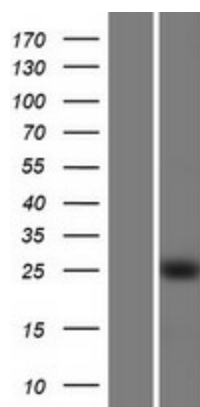
MW: 25.3 kDa

Gene Summary: Transcription factor that binds GC and GT boxes and displaces Sp1 and Sp3 from these sequences. Modulates dopaminergic transmission in the brain (By similarity).
[UniProtKB/Swiss-Prot Function]

Product images:



Circular map for RC224273



Western blot validation of overexpression lysate (Cat# [LY410433]) using anti-DDK antibody (Cat# [TA50011-100]). Left: Cell lysates from untransfected HEK293T cells; Right: Cell lysates from HEK293T cells transfected with RC224273 using transfection reagent MegaTran 2.0 (Cat# [TT210002]).