

## Product datasheet for **RC224271**

### SOX5 (NM\_152989) Human Tagged ORF Clone

#### Product data:

|                           |   |
|---------------------------|---|
| Product Type:             | Expression Plasmids                     |
| Product Name:             | SOX5 (NM_152989) Human Tagged ORF Clone |
| Tag:                      | Myc-DDK                                 |
| Symbol:                   | SOX5                                    |
| Synonyms:                 | L-SOX5; L-SOX5B; L-SOX5F; LAMSHF        |
| Mammalian Cell Selection: | Neomycin                                |
| Vector:                   | pCMV6-Entry (PS100001)                  |
| E. coli Selection:        | Kanamycin (25 ug/mL)                    |



[View online »](#)

ORF Nucleotide  
Sequence:

>RC224271 representing NM\_152989  
Red=Cloning site Blue=ORF Green=Tags(s)

TTTTGTAATACGACTCACTATAGGGCGGCCGGAATTCGTGACTGGATCCGGTACCGAGGAGATCTGCC  
GCC**CGCATCGCC**

ATGTCCTCAAGCGACCAGCCTCTCCGTATGGGGAAGCAGATGGAGAGGTAGCCATGGTGACAAGCAGAC  
AGAAAGTGAAGAAGAGGAGAGTGACGGCTCCCAGCCTTTCACCTTCCCTTGCATGTGAGTTTTCCCAA  
CAAGCCTCACTCTGAGGAATTTAGCCAGTTTCTGTGCTGACGCAAGAGACTTGTGGCCATAGGACTCCC  
ACTTCTCAGCACAATAAATGGAAGTTGATGGCAATAAAGTTATGTCTTCATTTGCCCCACACAACATCAT  
CTACCTCACCTCAGAAGGCAGAAGAAGTGGGCGACAGAGTGGCGAGTCTTGTCTAGTACAGCCCTGGG  
AACTCCTGAACGGCGCAAGGGCAGTTTGTGATGTTGTTGACACCTTGAAGCAGAGGAAAATGGAAGAG  
CTCATCAAAAACGAGCCGGAAGAAACCCCAAGTATTGAAAACTACTCTCAAAGGACTGGAAGACAAGC  
TTCTTGAATGGGATCGGGAACTTTGGCGAAATAAAAGGGACTCCCGAGAGCTTAGCTGAGAAAAGAAAG  
GCAACTCATGGGTATGATCAACCAGCTGACCAGCTCCGAGAGCAGCTGTTGGCTGCCACGATGAGCAG  
AAGAACTAGCTGCCTCTCAGATTGAGAAACAGCGTCAGCAAATGGAGCTGGCCAAGCAGCAACAAGAAC  
AAATTGCAAGACAGCAGCAGCAGCTTCTACAGCAACAACAACAAAATCAATTTGCTCCAGCAACAGATCCA  
GGTTCAAGGTCAGCTGCCGCCATTAATGATTCCCGTATCCCTCCTGATCAACGGACACTGGCTGCAGCT  
GCCCAGCAAGGATTCCTCCTCCCTCCAGGCTTACAGCTATAAGGCTGGATGTAGTGACCCCTTACCCTGTT  
AGCTGATCCCACTACCATGGCAGCTGTGCGCAGCAACACCAGGCTTAGGCCACTCCAAGTGCAGCA  
GTTATATGCTGCCAGCTAGCTGCAATGCAGGTATCTCCAGGAGGGAAGCTGCCAGGCATACCCCAAGGC  
AACCTTGGTGTGCTGTATCTCCTACCAGCATTCACACAGACAAGAGCACAAACAGCCCACCACCCAAAA  
CAAGGATGAAGTGGCACAGCCACTGAACCTATCAGCTAAACCCAAGACCTCTGATGGCAAATCACCCAC  
ATCACCCACCTCTCCCATATGCCAGCTCTGAGAATAAACAGTGGGGCAGGCCCCCTCAAAGCCTCTGTC  
CCAGCAGCGTTAGCTAGTCCCTCAGCCAGAGTTAGCACAAATAGGTTACTTAAATGACCATGATGCTGTCA  
CCAAGGCAATCCAAGAAGCTCGGCAATGAAGGAGCAACTCCGACGGGAACAACAGGTGCTTGTGAGGAA  
GGTGGCTGTTGTGAATAGTCTGGGTCTCAATAACTGCCGAACAGAAAAGGAAAAACAACACTGGAGAGT  
CTGACTCAGCAACTGGCAGTTAAACAGAATGAAGAAGGAAAAATTTAGCCATGCAATGATGGATTTCAATC  
TGAGTGGAGATTCTGATGGAAGTGTGGAGTCTCAGAGTCAAGAATTTATAGGGAATCCCGAGGGCGTGG  
TAGCAATGAACCCACATAAAGCGTCCAATGAATGCCTTCATGGTGTGGGCTAAAGATGAACGGAGAAAG  
ATCCTTCAAGCCTTTCCTGACATGCACAACCTCCAACATCAGCAAGATATTGGGATCTCGTGAAAGCTA  
TGACAAAACCTAGAGAAACAGCCATATTATGAGGAGCAAGCCCGTCTCAGCAAGCAGCACCTGGAGAAGTA  
CCCTGACTATAAGTACAAGCCCAGGCCAAAGCGCACCTGCCTGGTGGATGGCAAAAAGCTGCGCATTGGT  
GAATACAAGGCAATCATGCGCAACAGGCGGCAGGAAATGCGGCAGTACTTCAATGTTGGGCAACAAGCAC  
AGATCCCCATTGGCACTGCTGGTGTGTGTACCCTGGAGCCATCGCCATGGCTGGGATGCCCTCCCTCA  
CCTGCCCTCGGAGCACTCAAGCGTGTCTAGCAGCCAGAGCCTGGGATGCCTGTTATCCAGAGCACTTAC  
GGTGTGAAAGGAGAGGAGCCACATATCAAAGAAGAGATACAGGCCGAGGACATCAATGGAGAAATTTATG  
ATGAGTACGACGAGGAAGAGGATGATCCAGATGTAGATTATGGGAGTGACAGTAAAACCATATTGCAGG  
ACAAGCCAAC

**ACGCGT**ACGCGGCCGCTCGAGCAGAAACTCATCTCAGAAGAGGATCTGGCAGCAAATGATATCCTGGATT  
ACAAGGATGACGACGATAAGGTTTAA

**Protein Sequence:** >RC224271 representing NM\_152989  
 Red=Cloning site Green=Tags(s)

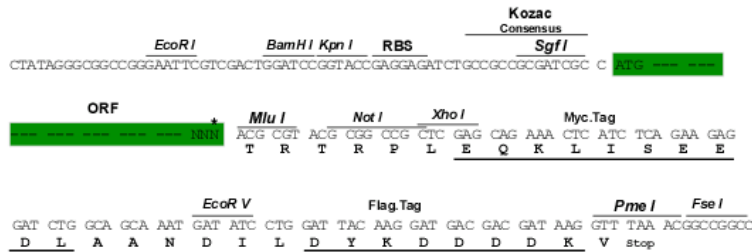
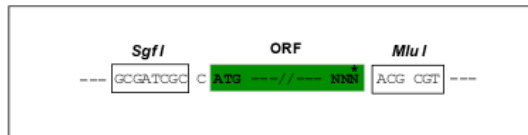
MSSKRPASPYGEADGEVAMVTSRQKVEEEEESDGLPAFHLPLHVSFPNKPHEEFQPVSLLTQETCGHRTPTSQHNTMEVDGNKVMSSFAPHNSSTSPQKAEEGGRQSGESLSSTALGTPERRKGLADVVDTLKQRKMEE  
 LIKNEPEETPSIEKLLSKDWKDKLLAMGSGNFGEIKGTPESLAEKERQLMGMINQLTSLREQLLAHDEQ  
 KKLAASQIEKQRQMELAKQQQEQIARQQQLLQQQHKINLLQQQIQVQQLPPLMIPVFPDQRTLAAA  
 AQQGFLLPPGFSYKAGCSDPYVQLIPTTMAAAAAAATPGLGPLQLQQLYAAQLAAMQVSPGKLPGIPQG  
 NLGAAVSPTSIHTDKSTNSPPPKSKDEVAQPLNLSAKPKTSDGKSPTSSPHMPALRINSGAGPLKASV  
 PAALASPARVSTIGYLNHDHAVTKAIQEARQMKEQLRREQQVLDGKVAVVNSLGLNNCRTEKEKTTLES  
 LTQQLAVKQNEEGKFSHAMDFNLSGSDGSAGVSESRIYRESRGRSNEPHIKRPMNAFMVWAKDERRK  
 ILQAFPDMHNSNISKILGSRWKAMTNLEKQPYEEQARLSKQHLEKYPDYKYKPRPKRTCLVDGKKLRIG  
 EYKAIMRNRQEMRQYFNVGQQAQIPIATAGVVYPGAIAMAGMPSPHLPSEHSSVSSSPEPGMPVIQSTY  
 GVKGEEPHIKEEIQAEDINGEIYDEYDEEEDDPVDYGSDSENHIAGAN

TRTRPLEQKLISEEDLAANDILDYKDDDDKV

**Restriction Sites:** SgfI-MluI

**Cloning Scheme:**

Cloning sites used for ORF Shuttling:



\* The last codon before the Stop codon of the ORF

**ACCN:** NM\_152989

**ORF Size:** 2250 bp

**OTI Disclaimer:** The molecular sequence of this clone aligns with the gene accession number as a point of reference only. However, individual transcript sequences of the same gene can differ through naturally occurring variations (e.g. polymorphisms), each with its own valid existence. This clone is substantially in agreement with the reference, but a complete review of all prevailing variants is recommended prior to use. [More info](#)

**OTI Annotation:** This clone was engineered to express the complete ORF with an expression tag. Expression varies depending on the nature of the gene.

**Components:** The ORF clone is ion-exchange column purified and shipped in a 2D barcoded Matrix tube containing 10ug of transfection-ready, dried plasmid DNA (reconstitute with 100 ul of water).

**Reconstitution Method:**

1. Centrifuge at 5,000xg for 5min.
2. Carefully open the tube and add 100ul of sterile water to dissolve the DNA.
3. Close the tube and incubate for 10 minutes at room temperature.
4. Briefly vortex the tube and then do a quick spin (less than 5000xg) to concentrate the liquid at the bottom.
5. Store the suspended plasmid at -20°C. The DNA is stable for at least one year from date of shipping when stored at -20°C.

**RefSeq:** [NM\\_152989.5](#)

**RefSeq Size:** 4566 bp

**RefSeq ORF:** 2253 bp

**Locus ID:** 6660

**UniProt ID:** [P35711](#)

**Cytogenetics:** 12p12.1

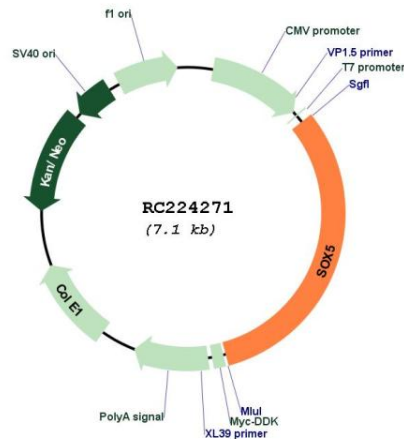
**Domains:** HMG

**Protein Families:** Transcription Factors

**MW:** 82.5 kDa

**Gene Summary:** This gene encodes a member of the SOX (SRY-related HMG-box) family of transcription factors involved in the regulation of embryonic development and in the determination of the cell fate. The encoded protein may act as a transcriptional regulator after forming a protein complex with other proteins. The encoded protein may play a role in chondrogenesis. A pseudogene of this gene is located on chromosome 8. Multiple transcript variants encoding distinct isoforms have been identified for this gene. [provided by RefSeq, Jul 2008]

### Product images:



Circular map for RC224271