

Product datasheet for **RC224270**

FLRT2 (NM_013231) Human Tagged ORF Clone

Product data:

Product Type:	Expression Plasmids
Product Name:	FLRT2 (NM_013231) Human Tagged ORF Clone
Tag:	Myc-DDK
Symbol:	FLRT2
Mammalian Cell Selection:	Neomycin
Vector:	pCMV6-Entry (PS100001)
E. coli Selection:	Kanamycin (25 ug/mL)



[View online »](#)

**ORF Nucleotide
Sequence:**

>RC224270 ORF sequence
 Red=Cloning site Blue=ORF Green=Tags(s)

TTTTGTAATACGACTCACTATAGGGCGGCCGGAATTCGTCGACTGGATCCGGTACCGAGGAGATCTGCC
 GCC**CGGATCGCC**

ATGGGCCTACAGACCACAAAGTGGCCAGCCATGGGGCTTTTTCTGAAGTCTTGCTTATCATTCC
 TGGGGCTCTACTCACAGGTGCCAACTCTGGCCTGCCCTAGTGTGCGCTGCGACAGGAACCTTGT
 CTAAGTGAATGAGCGAAGCTTGACCTCAGTGCCTCTGGGATCCCGGAGGGCGTAACCGTACTCTACCTC
 CACAACAACCAAAATTAATAATGCTGGATTTCTGCAGAACTGCACAATGTACAGTCGGTGCACACGGTCT
 ACCTGTATGGCAACCAACTGGACGAATTCCTCATGAACCTTCCAAGAATGTCAGAGTTCTCCATTTGCA
 GGAAAACAATATTCAGACCATTTACGGGCTGCTCTTGCCAGCTCTGAAGCTGAAGAGCTGCACCTG
 GATGACAACTCCATATCCACAGTGGGGTGAAGACGGGGCTTCCGGGAGGCTATTAGCCTCAAATTTGT
 TGTTTTGTCTAAGAATCACCTGAGCAGTGTGCCTGTTGGGCTTCTGTGACTTGAAGAGCTGAGAGT
 GGATGAAAATCGAATTGCTGTCATATCCGACATGGCCTTCCAGAATCTCACGAGCTTGGAGCGTCTATT
 GTGGACGGGAACCTCCTGACCAACAAGGTATCGCCGAGGGCACCTTCAGCCATCTCACCAAGCTCAAGG
 AATTTTCAATTGTACGAATTTCGCTGTCCACCCTCTCCCGATCTCCAGGTACGCATCTGATCAGGCT
 CTATTTGCAGGACAACCAGATAAACACATTCTTTGACAGCCTTCTCAAATCTGCGTAAGCTGGAACGG
 CTGGATATATCCAACAACCAACTGCGGATGCTGACTCAAGGGGTTTTTGATAATCTTCCAACCTGAAGC
 AGCTCACTGCTCGGAATAACCTTGGTTTTGTGACTGCAGTATTAATGGGTACAGAAATGGCTCAAATA
 TATCCCTTCATCTCAACGTGCGGGTTTCATGTGCCAAGTCTGAACAAGTCCGGGGGATGGCCGTC
 AGGGAATTAATATGAATCTTTGTCTGTCCCACCACGACCCCGCCCTGCCTCTTTCACCCAGCCC
 CAAGTACAGTTCTCCGACCCTCAGCCTCCCACCCTCTCTATTCCAACCCTAGCAGAAGCTACACGCC
 TCCAACCTCTACCACATCGAAACTTCCCACGATTCTGACTGGGATGGCAGAGAAAGAGTGACCCACCT
 ATTTCTGAACGGATCCAGCTCTCTATCCATTTGTGAATGATACTTCCATTCAAGTCAGCTGGCTCTCTC
 TCTTACCCTGATGGCATACAAACCTCACATGGGTGAAAATGGGCCACAGTTTAGTAGGGGCATCGTTCA
 GGAGCGCATAGTCAGCGGTGAGAAGCAACACCTGAGCCTGGTAACTTAGAGCCCGATCCACCTATCGG
 ATTTGTTTAGTGCCACTGGATGCTTTAACTACCGCGCGGTAGAAGACACCATTGTTTACAGAGCCACCA
 CCCATGCCTCTATCTGAACAACGGCAGCAACACAGCGTCCAGCCATGAGCAGACGACGTCCACAGCAT
 GGGCTCCCCTTTCTGCTGGCGGGCTTGATCGGGGGCGCGGTGATTTTGTGCTGGTGGTCTTGCTCAGC
 GTCTTTTGTGTCATATGCACAAAAGGGGCGCTACACCTCCAGAAGTGGAAAACAACCGGGGCCGGC
 GGAAAGATGATTATTGCGAGGCAGGCACCAAGAAGGACAACCTCCATCCTGGAGATGACAGAAACAGTTT
 TCAGATCGTCTCTAAATAACGATCAACTCCTTAAAGGAGATTTGAGACTGCAGCCATTTACACCCCA
 AATGGGGGCATTAATTACACAGACTGCCATATCCCAACAACATGCGATACTGCAACAGCAGCGTGCCAG
 ACCTGGAGCACTGCCATACG

ACGGTACGCGGCCGCTCGAGCAGAACTCATCTCAGAAGAGGATCTGGCAGCAATGATATCCTGGATT
 ACAAGGATGACGACGATAAGGTTTAA

Protein Sequence: >RC224270 protein sequence
Red=Cloning site Green=Tags(s)

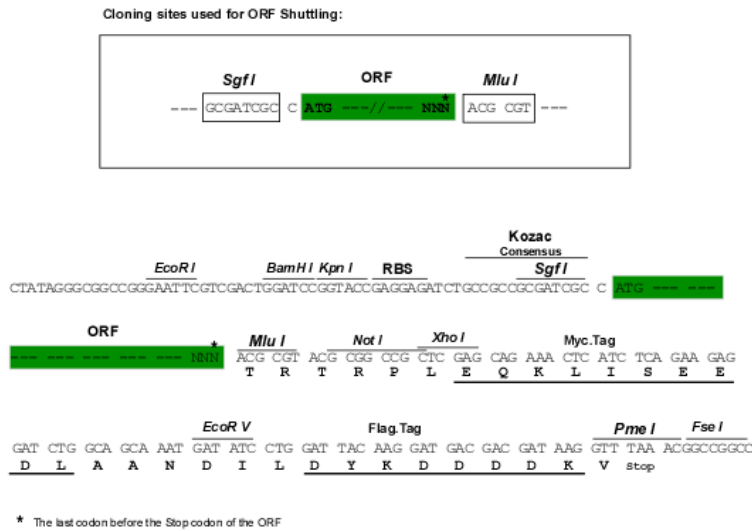
MGLQTTKWP SHGAFFLKS WLIIISLGLYSQVSKLLACPSVCRCDRNFVYCNERSLTSVPLGIPEGVTVLYL
HNNQINNAGFPAELHNVQSVHTVYLYGNQLDEFPMNLPKNVRLHLQENNIQTISR AALQLLKLEELHL
DDNSISTVGVEDGAFREAI SLKLLFLSKNHLSSVPVGLPVDLQELRV DENRIAVISDMAFQNLTSLERLI
VDGNLLTNKGIAEGTF SHLTKLKEFSIVRNSLSHPPDLPGTHLIRLYLQDNQINHIPLTAFSNLRKLER
LDISNNQLRMLTQGVFDNLSNLKQLTARNNPWFCDCSIKWVTEWLKYIPSSLNVRGFMCQGP EQVRGMAV
RELNMNLLS CPTTTPGLPLFTPAPSTASPTTQPPTLSIPNPSRSYTPPTPTTSKLP TIPDWDGRERVTPP
ISERIQLSIHFVNDTSIQVSWLSLFTVMAYKLTWVKMGHSLVGGIVQERIVS GEKQHL SLVNLEPRSTYR
ICLVPLDAFN YRAVEDTICSEATTHASYLNNGSNTASSHEQTTSHSMGSPFLLAGLIGGAVIFVLVLLS
VFCWHMHKKGRYTSQKWKYNRGRKDDYCEAGTKKDNSILEMTETSFQIVSLNNDQLLKGDFRLQPIYTP
NGGINYTDCHIPNMRYCNSSVPDLEHCHT

TRTRPLEQKLISEEDLAANDILDYKDDDDKV

Chromatograms: https://cdn.origene.com/chromatograms/mk6604_f10.zip

Restriction Sites: SgfI-MluI

Cloning Scheme:



ACCN: NM_013231

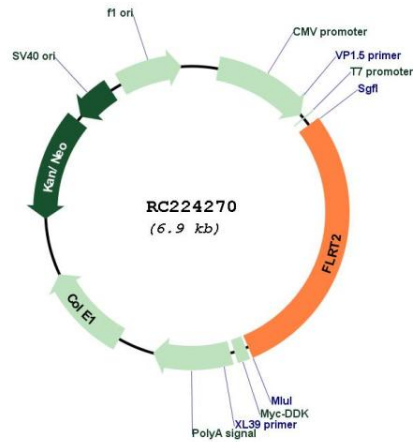
ORF Size: 1980 bp

OTI Disclaimer: The molecular sequence of this clone aligns with the gene accession number as a point of reference only. However, individual transcript sequences of the same gene can differ through naturally occurring variations (e.g. polymorphisms), each with its own valid existence. This clone is substantially in agreement with the reference, but a complete review of all prevailing variants is recommended prior to use. [More info](#)

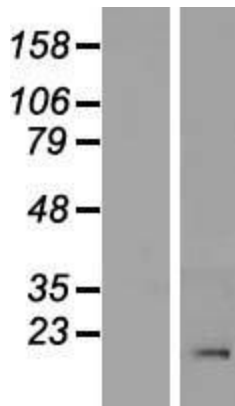
OTI Annotation: This clone was engineered to express the complete ORF with an expression tag. Expression varies depending on the nature of the gene.

Components:	The ORF clone is ion-exchange column purified and shipped in a 2D barcoded Matrix tube containing 10ug of transfection-ready, dried plasmid DNA (reconstitute with 100 ul of water).
Reconstitution Method:	<ol style="list-style-type: none">1. Centrifuge at 5,000xg for 5min.2. Carefully open the tube and add 100ul of sterile water to dissolve the DNA.3. Close the tube and incubate for 10 minutes at room temperature.4. Briefly vortex the tube and then do a quick spin (less than 5000xg) to concentrate the liquid at the bottom.5. Store the suspended plasmid at -20°C. The DNA is stable for at least one year from date of shipping when stored at -20°C.
RefSeq:	NM_013231.5
RefSeq Size:	7185 bp
RefSeq ORF:	1983 bp
Locus ID:	23768
UniProt ID:	O43155
Cytogenetics:	14q31.3
Domains:	LRRNT, LRRCT, LRR, LRR_TYP, FN3
Protein Families:	Druggable Genome, Transmembrane
MW:	74 kDa
Gene Summary:	<p>This gene encodes a member of the fibronectin leucine rich transmembrane (FLRT) family of cell adhesion molecules, which regulate early embryonic vascular and neural development. The encoded type I transmembrane protein has an extracellular region consisting of an N-terminal leucine-rich repeat domain and a type 3 fibronectin domain, followed by a transmembrane domain and a short C-terminal cytoplasmic tail domain. It functions as both a homophilic cell adhesion molecule and a heterophilic chemorepellent through its interaction with members of the uncoordinated-5 receptor family. Proteolytic removal of the extracellular region controls the migration of neurons in the developing cortex. Alternative splicing results in multiple transcript variants. [provided by RefSeq, Sep 2016]</p>

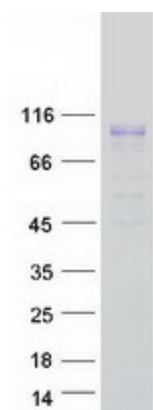
Product images:



Circular map for RC224270



Western blot validation of overexpression lysate (Cat# [LY415725]) using anti-DDK antibody (Cat# [TA50011-100]). Left: Cell lysates from untransfected HEK293T cells; Right: Cell lysates from HEK293T cells transfected with RC224270 using transfection reagent MegaTran 2.0 (Cat# [TT210002]).



Coomassie blue staining of purified FLRT2 protein (Cat# [TP324270]). The protein was produced from HEK293T cells transfected with FLRT2 cDNA clone (Cat# RC224270) using MegaTran 2.0 (Cat# [TT210002]).