

Product datasheet for **RC224269**

PDE9A (NM_001001571) Human Tagged ORF Clone

Product data:

Product Type:	Expression Plasmids
Product Name:	PDE9A (NM_001001571) Human Tagged ORF Clone
Tag:	Myc-DDK
Symbol:	PDE9A
Synonyms:	HSPDE9A2
Mammalian Cell Selection:	Neomycin
Vector:	pCMV6-Entry (PS100001)
E. coli Selection:	Kanamycin (25 ug/mL)



[View online »](#)

ORF Nucleotide Sequence:

>RC224269 representing NM_001001571
 Red=Cloning site Blue=ORF Green=Tags(s)

TTTTGTAATACGACTCACTATAGGGCGGCCGGAATTCGTCGACTGGATCCGGTACCGAGGAGATCTGCC
 GCC**CGCATCGCC**

ATGGACGCATTAGAAGAACACGACCATCTCCCTGCTGACCACCGACGACGCCATGGTCTCCATCGACC
 CCACCATGCCCGGAATTCAGAACGCACTCCGTACAAAGTGAGACCTGTGGCCATCAAGCAACTCTCCGA
 GAGAGAAGAATTAAATCCAGAGCGTGTGGCGCAGGTTGCAGAGCAGTTCTCAAGAGCATTAAAAATCAAT
 GAACTGAAAGCTGAAGTTGCAAATCACTTGGTGTCTAGAGAAAACGCGTGAATTTGGAAGGACTAAAAG
 TGGTGGAGATTGAGAAATGCAAGAGTGACATTAAGAAGATGAGGGAGGAGCTGGCGGCCAGAAGCAGCAG
 GACCAACTGCCCTGTAAGTACAGTTTTTTGGATAACCACAAGAAGTTGACTCCTCGACGCGATGTTCCC
 ACTTACCCCAAGTACCTGCTCTCCAGAGACCATCGAGGCCCTGCGGAAGCCGACCTTTGACGTCTGGC
 TTTGGGAGCCCAATGAGATGCTGAGCTGCCTGGAGCACATGTACCAGACCTCGGGCTGGTCAGGGACTT
 CAGCATCAACCCGTGACCCCTCAGGAGGTGGCTGTTCTGCGTCCACGACAACTACAGAAACAACCCCTTC
 CAAACTTCCGGCACTGCTTCTGCGTGGCCAGATGATGTACAGCATGGTCTGGCTCTGAGTCTCCAGG
 AGAAGTTCTCACAAACGGATATCCTGATCCTAATGACAGCGGCCATCTGCCACGATCTGGACCATCCCGG
 CTAACAACAACACGTACCAGATCAATGCCCGCACAGAGCTGGCGGTCCGCTACAATGACATCTCACCGCTG
 GAGAACCACCACTGCGCCGTGGCCTTCCAGATCCTCGCCGAGCCTGAGTGAACATCTTCTCCAACATCC
 CACCTGATGGGTTCAAGCAGATCCGACAGGGAATGATCACATTAATCTTGGCCACTGACATGGCAAGACA
 TGCAGAAATTATGGATCTTTCAAAGAGAAAATGGAGAATTTGACTACAGCAACGAGGAGCACATGACC
 CTGCTGAAGATGATTTTATAGAGGAATATTTATGCAGAGCGACCGTGAGAAGTCAGAAGCCTTCTGCTGT
 GCGACCGTTCATGGACCGAGACAAAGTGACCAAGGCCACAGCCAGATTGGGTTTCATCAAGTTTGTCTGT
 ATCCCAATGTTTGAACAGTGACCAAGCTTCCCCATGGTTGAGGAGATCATGCTGCAGCCACTTTGGG
 AATCCCGAGATCGCTACGAGGAGCTGAAGCGGATAGATGACGCCATGAAAGAGTTACAGAAGAAGACTGA
 CAGCTTGACGTCTGGGGCCACCGAGAAGTCCAGAGAGAGAAGCAGAGATGTGAAAAACAGTGAAGGAGAC
 TGTGCC

ACGGGCCGCTCGAGCAGAAACTCATCTCAGAAGAGGATCTGGCAGCAAATGATATCTGGGA
TTACAAGGATGACGACGATAAGGTTTAA

Protein Sequence:

>RC224269 representing NM_001001571
 Red=Cloning site Green=Tags(s)

MDAFRRNTTISLLTTDDAMVSIPTMPANSERTPYKVRPVAIKQLSEREELIQSVLAQVAEQFSRAFKIN
 ELKAEVANHLAVLEKRVELEGLKVVEIEKCKSDIKKMREELAARSRTNCPCKYSFLDNHKKLTPRRDVP
 TYPKYLLSPETIEALRKPTFDVWLWEPNEMLSLEHMYHDLGLVRDF SINPVTLRRWLFVHDNYRNNPF
 HNFRHCFQVAQMMYSMVWLSLQEFQSQTDILILMTAAI CHDL DHPGYNNTYQINARTELVRYNDISPL
 ENHHC AVAFQILAEPECNIFSNIPPDGFKQIRQGMITLILATDMARHAEIMDSFKEKMFNDYSNEEHMT
 LLKMILIKCCDISNEVRPMEVAEPWVDCLEEFYMQSDREKSEGLPVAPFMDRDKVTKATAQIGFIKFLV
 IPMFETVTKL FPMVEEIMLQPLWESRDYEEELKRIDDAMKELQKKTDSL TSGATEKSRERSRDVKNSEGD
 CA

TRRLEQKLISEEDLAANDILDYKDDDDKV

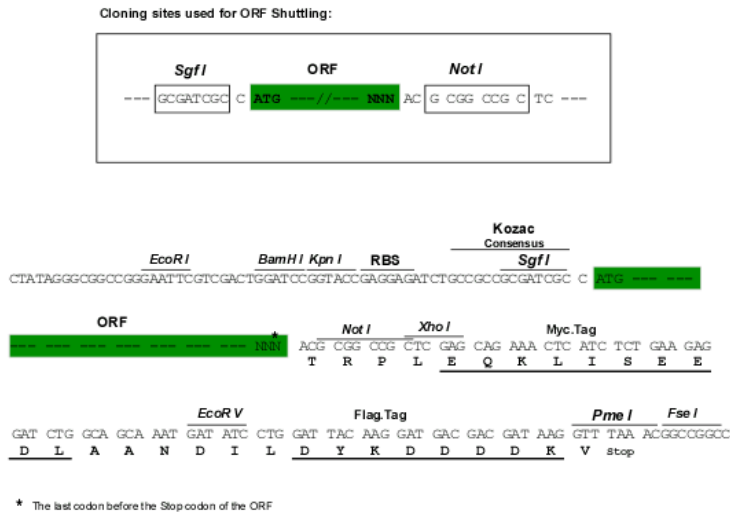
Chromatograms:

https://cdn.origene.com/chromatograms/mk8063_b11.zip

Restriction Sites:

SgfI-NotI

Cloning Scheme:



ACCN: NM_001001571

ORF Size: 1476 bp

OTI Disclaimer: The molecular sequence of this clone aligns with the gene accession number as a point of reference only. However, individual transcript sequences of the same gene can differ through naturally occurring variations (e.g. polymorphisms), each with its own valid existence. This clone is substantially in agreement with the reference, but a complete review of all prevailing variants is recommended prior to use. [More info](#)

OTI Annotation: This clone was engineered to express the complete ORF with an expression tag. Expression varies depending on the nature of the gene.

Components: The ORF clone is ion-exchange column purified and shipped in a 2D barcoded Matrix tube containing 10ug of transfection-ready, dried plasmid DNA (reconstitute with 100 ul of water).

- Reconstitution Method:
1. Centrifuge at 5,000xg for 5min.
 2. Carefully open the tube and add 100ul of sterile water to dissolve the DNA.
 3. Close the tube and incubate for 10 minutes at room temperature.
 4. Briefly vortex the tube and then do a quick spin (less than 5000xg) to concentrate the liquid at the bottom.
 5. Store the suspended plasmid at -20°C. The DNA is stable for at least one year from date of shipping when stored at -20°C.

RefSeq: [NM_001001571.1](#), [NP_001001571.1](#)

RefSeq Size: 1852 bp

RefSeq ORF: 1479 bp

Locus ID: 5152

UniProt ID: [O76083](#)

Cytogenetics: 21q22.3

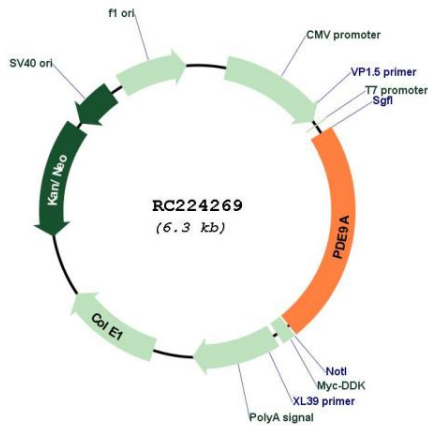
Protein Families: Druggable Genome

Protein Pathways: Progesterone-mediated oocyte maturation, Purine metabolism

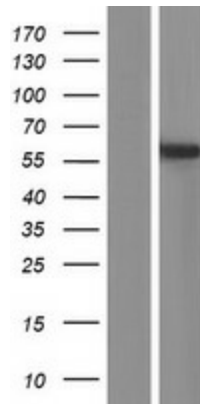
MW: 57.1 kDa

Gene Summary: The protein encoded by this gene catalyzes the hydrolysis of cAMP and cGMP to their corresponding monophosphates. The encoded protein plays a role in signal transduction by regulating the intracellular concentration of these cyclic nucleotides. Multiple transcript variants encoding several different isoforms have been found for this gene. [provided by RefSeq, Jul 2008]

Product images:



Circular map for RC224269



Western blot validation of overexpression lysate (Cat# [LY424388]) using anti-DDK antibody (Cat# [TA50011-100]). Left: Cell lysates from untransfected HEK293T cells; Right: Cell lysates from HEK293T cells transfected with RC224269 using transfection reagent MegaTran 2.0 (Cat# [TT210002]).