

Product datasheet for RC224260

BEND6 (NM_152731) Human Tagged ORF Clone

Product data:

Product Type:	Expression Plasmids
Product Name:	BEND6 (NM_152731) Human Tagged ORF Clone
Tag:	Myc-DDK
Symbol:	BEND6
Synonyms:	C6orf65
Mammalian Cell Selection:	Neomycin
Vector:	pCMV6-Entry (PS100001)
E. coli Selection:	Kanamycin (25 ug/mL)
ORF Nucleotide Sequence:	>RC224260 representing NM_152731 Red=Cloning site Blue=ORF Green=Tags(s)

TTTTGTAATACGACTCACTATAGGGCGGCCGGAATTCGTCGACTGGATCCGGTACCGAGGAGATCTGCC
GCC**CGGATCGCC**

ATGCAGAAGATCGTGCAGACAGATGAAATTACCAATACACAAGCTTTAGAAAAGGAAAGAGGAAAAGAA
CAGAGACAATGGACTCAGAAAATGCAAATAGTGACATGGATAAAGGACAGAGAGACCCATATTCGGGAAA
TGCCTTCTGCCTGGTGAAAGCTCCAGTGAGGATGAAGAGCCTTAGCAGAATTGTCAAAGGAAGAATTG
TGCGCCAAAATAAAAAGCCTGAAAGAAAACAAACACCCGAAAGAAAACAGCCGACTTCGACAGT
CTTTGGTCATGCTCAAGTGTTACCACAAGCAGTCACCCAGTTTGAAGAATTGGTTGGTATGGCCGAGGC
TCTGCTTAAGGGTGGGGGAACCATGTCTACATCTGCATCCACCCTCTGGAGAGCAACAAACAACTCCTCG
CCAGATTCATTTGCCTCAACATGCAGTAATTCTAATTCTAACTCCAGTTCACCAAGTTTCCTTAAAGCCTG
AGGAAGAGCATCAGACTGATGAGAAACAGTTCAGATTGAAAAATGGCAGATTGCCGTTGTAACAAGAG
CAAGCCTCAGAAGTTTATTAATGATTTAATGCAAGTACTTTACACAAATGAATACATGGCCACTCACAGC
CTGACAGGGGCAAAATCCTCTACTTCAAGGGACAAAGCTGTAACCAGCTATGAATCAGAATGAAGTCC
AAGAAATCATAGGAGTAACAAAACAATTATTTCCCAATACGGATGATGTTCAATTAGGAGAATGATAGG
GCAAAAGCTAAACAACCTGTACCAAGAAGCCAAATTTAAGCAAAAATCTTAACTCTCAGGATATTTAA

ACGCGTACGCGGCCGCTCGAGCAGAAACTCATCTCAGAAGAGGATCTGGCAGCAAATGATATCCTGGATT
ACAAGGATGACGACGATAAGGTTTAA



Protein Sequence: >RC224260 representing NM_152731
Red=Cloning site Green=Tags(s)

MQKIVQTDEITNTQAFRKGKRKRRTETMDSENANSMDMDKGQRDPYSGNAFLPGESSSEDEEPLAELSKEEL
 CAKIKSLKEKL TNTRKENSRLRQSLVMLQVLPQAVTQFEELVGMAEALLKGGGTMTSASTLWRATNNSS
 PDSFASTCSNSNSNSSSPVSLKPEEEHQDEKQFQIEKWQIARCNKSKPQKFINDLMQVL YTNEYMATHS
 LTGAKSSTS RDKAVKPAMNQNEVQEIIIGVTKQLFPNTDDVSIRRMIGQKLNCTKKPNLSKNLNSQDIK

TRTRPLEQKLISEEDLAANDILDYKDDDDKV

Chromatograms: https://cdn.origene.com/chromatograms/ja1281_b06.zip

Restriction Sites: SgfI-MluI

Cloning Scheme:



ACCN: NM_152731

ORF Size: 837 bp

OTI Disclaimer: The molecular sequence of this clone aligns with the gene accession number as a point of reference only. However, individual transcript sequences of the same gene can differ through naturally occurring variations (e.g. polymorphisms), each with its own valid existence. This clone is substantially in agreement with the reference, but a complete review of all prevailing variants is recommended prior to use. [More info](#)

OTI Annotation: This clone was engineered to express the complete ORF with an expression tag. Expression varies depending on the nature of the gene.

Components: The ORF clone is ion-exchange column purified and shipped in a 2D barcoded Matrix tube containing 10ug of transfection-ready, dried plasmid DNA (reconstitute with 100 ul of water).

Reconstitution Method:

1. Centrifuge at 5,000xg for 5min.
2. Carefully open the tube and add 100ul of sterile water to dissolve the DNA.
3. Close the tube and incubate for 10 minutes at room temperature.
4. Briefly vortex the tube and then do a quick spin (less than 5000xg) to concentrate the liquid at the bottom.
5. Store the suspended plasmid at -20°C. The DNA is stable for at least one year from date of shipping when stored at -20°C.

RefSeq: [NM_152731.3](#)

RefSeq Size: 2727 bp

RefSeq ORF: 840 bp

Locus ID: 221336

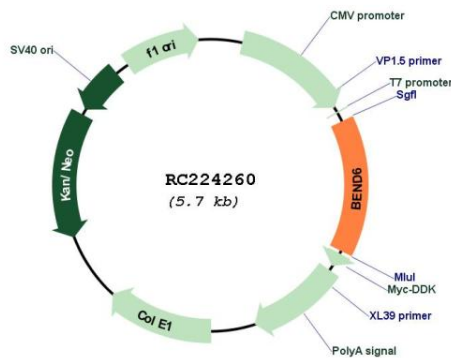
UniProt ID: [Q5SZJ8](#)

Cytogenetics: 6p12.1

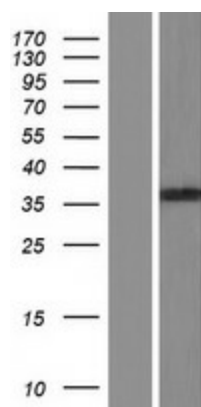
MW: 31 kDa

Gene Summary: Acts as a corepressor of recombining binding protein suppressor hairless (RBPJ) and inhibits Notch signaling in neural stem cells, thereby opposing their self-renewal and promoting neurogenesis (PubMed:23571214).[UniProtKB/Swiss-Prot Function]

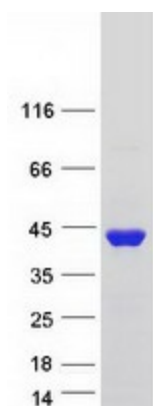
Product images:



Circular map for RC224260



Western blot validation of overexpression lysate (Cat# [LY407329]) using anti-DDK antibody (Cat# [TA50011-100]). Left: Cell lysates from untransfected HEK293T cells; Right: Cell lysates from HEK293T cells transfected with RC224260 using transfection reagent MegaTran 2.0 (Cat# [TT210002]).



Coomassie blue staining of purified BEND6 protein (Cat# [TP324260]). The protein was produced from HEK293T cells transfected with BEND6 cDNA clone (Cat# RC224260) using MegaTran 2.0 (Cat# [TT210002]).