

Product datasheet for **RC224259**

NTN3 (NM_006181) Human Tagged ORF Clone

Product data:

Product Type:	Expression Plasmids
Product Name:	NTN3 (NM_006181) Human Tagged ORF Clone
Tag:	Myc-DDK
Symbol:	NTN3
Synonyms:	NTN2L
Mammalian Cell Selection:	Neomycin
Vector:	pCMV6-Entry (PS100001)
E. coli Selection:	Kanamycin (25 ug/mL)



[View online »](#)

ORF Nucleotide Sequence:

>RC224259 representing NM_006181
 Red=Cloning site Blue=ORF Green=Tags(s)

TTTTGTAATACGACTCACTATAGGGCGGCCGGAATTCGTCGACTGGATCCGGTACCGAGGAGATCTGCC
 GCC**CGGATCGCC**

ATGCCTGGCTGGCCCTGGGGCTGCTGCTGACGGCAGGCACGCTCTTCGCCGCCCTGAGTCTGGGCCG
 CGGCGCCCGCCGACCCCTGCCACGATGAGGGGGTGCGCCCGCGCTGGTGCCAGGACTGGTGAACGC
 CGCCCTGGGCGCGAGGTGCTGGCTTCCAGCACGTGCGGGCGGCCGCCACTCGGCCTGCGACGCCTCC
 GACCCGCGACGGGCACACTCCCCGCCCTCCTTACTTCCCAGGGGGCACGGCCAGCCCTCTGTGCTGGC
 GCTCGGAGTCCCTGCCTCGGGCGCCCTCAACGTGACTCTCACGGTGCCCTGGGCAAGGCTTTTGAAGT
 GGTCTTGTGAGCCTGCGCTTCTGCTCAGCTCCCCAGCCTCCGTGGCCCTGCTCAAGTCTCAGGACCAT
 GGGCGCAGCTGGGCCCGCTGGGCTTCTTCTCCTCCACTGTGACCTGGACTATGGCCGTCTGCCTGCC
 CTGCCAATGGCCAGCTGGCCAGGGCCTGAGGCCCTGTGCTTCCCGCACCCCTGGCCAGCCTGATGG
 CAGCGGCTTCTGGCCTCAGCATGCAGGACAGCAGCCCCAGGCCTGGACCTGGACAGCAGCCAGTGC
 CTCAAGACTGGGTGACCGCCACCGACGCTCCGTGTAGTGCTCACAAAGCCTAGCAGCGCAGGTGACCCCA
 GGGACATGGAGGCCGTCGTCCTTACTCCTACGCAGCCACCGACCTCCAGGTGGGCGGGCGCTGCAAGT
 CAATGGACATGCCTCACGGTGCCTGCTGGACACACAGGGCCACCTGATCTGCGACTGTGGCATGGCACC
 GAGGGCCCTGACTGCGGGCGCTGCAAGCCCTTCTACTGCGACAGGCCATGGCAGCGGGCCACTGCCCGG
 AATCCCACGCCTGCCTCGCTTGTCTGCAACGGCCATGCCCGCCGCTGCCGCTTCAACATGGAGCTGTA
 CCGACTGTCCGGCCGCGCAGCGGGGTGTCTGTCTCAACTGCCGGCACAAACCCGCCGGCCGCGCCACTGC
 CACTACTGCCGGGAGGGCTTCTATCGAGACCCTGGCCGTGCCCTGAGTGACCGTCCGGCTTGCAGGGCCT
 GCGACTGCACCCGGTTGGTGTCTGCTGCAAGACCTGCAACCAGACACAGGCCAGTGTCCCTGCAAGGA
 TGGCGTCACTGGCCTCACCTGCAACCGCTGCGCGCCTGGCTTCCAGCAAAGCCGCTCCCCAGTGGCGCC
 TGTGTTAAGACCCTATCCCTGGACCCACTGAGGACAGCAGCCCTGTGCAGCCCCAGGACTGTGACTCGC
 ACTGCAAACCTGCCCGTGGCAGTACCGCATCAGCCTAAAGAAGTTCTGCAAGAAGGACTATGCGGTGCA
 GGTGGCGGTGGGTGCGCGCGGGAGGCGCGCGCGGAGTAGCGCGCTGTGGTGCCCGCCGGGATGCGGCT
 TTCCGGAGCGGAGAGGAGCGCGCGGGGAGTAGCGCGCTGTGGTGCCCGCCGGGATGCGGCT
 GCGGCTGCCCGCGCTGCTCCCCGGCCGCGCTACCTCCTGCTGGGGGGCGGGCTGGAGCCGGGCTGG
 GGGCGGGGGGGCGGGGCCCCGGGCTCATCGCCGCCCGGAAGCCTCGTGCTACCCTGGAGGGACGCG
 TGGACCGCGCGCTGCGGAGGCTGCAGCGACGCGAACGGCGGGGGCGCTGCAGCGCCGCC

AG**CGGACCG**ACGCGTACGCGGCCGCTCGAGCAGAACTCATCTCAGAAGAGGATCTGGCAGCAAATGATATCC
 TGGATTACAAGGATGACGACGATAAGGTTAA

Protein Sequence:

>RC224259 representing NM_006181
 Red=Cloning site Green=Tags(s)

MPGWPGLLLLTAGTLFAALSPGPPAPADPCHDEGGAPRGCVPLVNAALGREVLASSTCGRPATRACDAS
 DPRRAHSPALLTSPGGTASPLCWRSESLPRAPLNVTLTVPKAFELVFVSLRFSAPPASVALLKSQDH
 GRSWAPLGFSSHCDDLRYRLPAPANGPAGPPEALCFPAPLAQPDGSLLAFFSMQDSSPPGLDLDSPPV
 LQDWVTAADVVRVLRPSTAGDPRDMEAVVPYSYAATDLQVGGRCCKNGHASRCLLDTQGHLCDCRHGT
 EGPDCGRCKPFYCDRPWQRATARESHAACLASCNGHARRCFNMELYRLSGRRSGVCLNCRHNTAGRHC
 HYCREGFYRDPGRALSDRRACRACDCHPVGAAGKTCNQTTGQCCKDGVTLTCNRCAPGFQQRSPVAP
 CVKTPIPGPTEDSSPVQPQDCDSHCKPARGSYRISLKKFCKKDYAVQVAVGARGEARGAWTRFPVAVLAV
 FRSGEERARRGSSALWVPAGDAACGCPRLLPGRRYLLGGPGAAAGGAGGRGPLIAARGSLVLPWRDA
 WTRRLRRLQRERRRGRCSAA

SGP**TRTRRLEQKLI**SEEDLAANDILDYKDDDDKV

Chromatograms:

https://cdn.origene.com/chromatograms/mk8043_e09.zip

Restriction Sites:

Sgfl-RsrII

Cloning Scheme:


ACCN: NM_006181

ORF Size: 1740 bp

OTI Disclaimer: The molecular sequence of this clone aligns with the gene accession number as a point of reference only. However, individual transcript sequences of the same gene can differ through naturally occurring variations (e.g. polymorphisms), each with its own valid existence. This clone is substantially in agreement with the reference, but a complete review of all prevailing variants is recommended prior to use. [More info](#)

OTI Annotation: This clone was engineered to express the complete ORF with an expression tag. Expression varies depending on the nature of the gene.

Components: The ORF clone is ion-exchange column purified and shipped in a 2D barcoded Matrix tube containing 10ug of transfection-ready, dried plasmid DNA (reconstitute with 100 ul of water).

- Reconstitution Method:**
1. Centrifuge at 5,000xg for 5min.
 2. Carefully open the tube and add 100ul of sterile water to dissolve the DNA.
 3. Close the tube and incubate for 10 minutes at room temperature.
 4. Briefly vortex the tube and then do a quick spin (less than 5000xg) to concentrate the liquid at the bottom.
 5. Store the suspended plasmid at -20°C. The DNA is stable for at least one year from date of shipping when stored at -20°C.

RefSeq: [NM_006181.3](#)

RefSeq Size: 1986 bp

RefSeq ORF: 1743 bp

Locus ID: 4917

UniProt ID: [O00634](#)

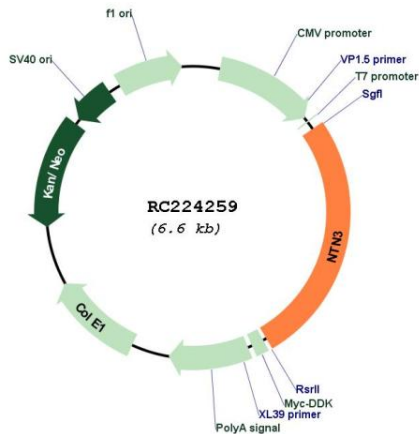
Cytogenetics: 16p13.3

Protein Pathways: Axon guidance

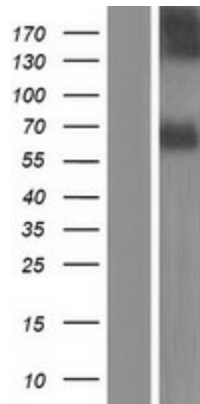
MW: 61.3 kDa

Gene Summary: Netrins control guidance of CNS commissural axons and peripheral motor axons. [UniProtKB/Swiss-Prot Function]

Product images:



Circular map for RC224259



Western blot validation of overexpression lysate (Cat# [LY416819]) using anti-DDK antibody (Cat# [TA50011-100]). Left: Cell lysates from untransfected HEK293T cells; Right: Cell lysates from HEK293T cells transfected with RC224259 using transfection reagent MegaTran 2.0 (Cat# [TT210002]).