

## Product datasheet for **RC224258**

### **PABPN1L (NM\_001080487) Human Tagged ORF Clone**

#### Product data:

**Product Type:** Expression Plasmids  
**Product Name:** PABPN1L (NM\_001080487) Human Tagged ORF Clone  
**Tag:** Myc-DDK  
**Symbol:** PABPN1L  
**Synonyms:** ePABP2; PABPNL1  
**Mammalian Cell Selection:** Neomycin  
**Vector:** pCMV6-Entry (PS100001)  
**E. coli Selection:** Kanamycin (25 ug/mL)  
**ORF Nucleotide Sequence:** >RC224258 representing NM\_001080487  
**Red=Cloning site Blue=ORF Green=Tags(s)**

TTTTGTAATACGACTCACTATAGGGCGGCCGGAATTCGTCGACTGGATCCGGTACCGAGGAGATCTGCC  
GCC**CGCATCGCC**

ATGTGGCCCTCCCGAGCCGCTCTCTTCCCACCCCGACTCAGGCCTGGCTCCAGACGGTCTCTCAG  
ACCCTGAGGCCAGGGCTGGGGGCTGGAACGAGACCAAGGAGATTCTGGGGCCAGAGGTGGGAAGG  
GAAGGAGGAGAAAGAGGAGGAAGAGGATGCAGAGGAAGACCAGGATGGGGATGCAGGCTTCTGCTGTCT  
CTGCTGGAGCAAGAGAACCTGGCTGAGTGCCATTGCCTGACCAGGAGCTGGAGGCCATCAAGATGAAGG  
TGTGTCCATGGAGCAGGCCGAGGGGACCCACGGCTCCAGGAGTGCAGCAACAGGCCGAGGAAGAGGA  
GGGCACCGCGCCGGGCAGCTGCTGAGCCCTGAGACCGTGGGCTGCCCTCTCTGGGACCCCGAGGAG  
AAGGTGGAGGCTGACCACAGATCCGTCTACGTGGCAACGTGGACTACGGGGCTCCGCCGAGGAGCTGG  
AGGCCACTTCAGCCGCTGTGGGAGGTCCACCGAGTCACGATCCTGTGTGACAAGTTCTCTGGACACCC  
CAAGGGTTATGCCTACATAGAGTTTGCACCAAGGGCTCCGTGCAGGCCCGCGTGGAGCTGGACCAGAGC  
CTCTTCCGGGGCCGGTTCATCAAGGTGCTGCCAAAAGAACAATTCCCTGGGATCAGCTCCACAGACC  
GCGGGGCTTCGAGGACACCCAGGCTCCAGGGGGCACCCCTCCCCACAGCGGCTCCAGGGCAGGCC  
CCGGCTCAGACCACAAGGGCAGAACCCGGGCCGTGGAAAATTCTACCATGGTTTTACCCGTAT

**ACGCGT**ACGCGGCCGCTCGAGCAGAACTCATCTCAGAAGAGGATCTGGCAGCAAATGATATCCTGGATT  
ACAAGGATGACGACGATAAGGTTTAA



[View online »](#)

**Protein Sequence:** >RC224258 representing NM\_001080487  
 Red=Cloning site Green=Tags(s)

MWPFPSRSLFPPPTQAWLQTVSSDPEAQGWGAWNETKEILGPEGGEGKKEEEEEEDAEDQDGDAGFLLS  
 LLEQENLAECPLPDQLEAIAIKMKVCAMEQAEGTPRPPGVQQAAEEEEGTAAGQLLSPETVGCPLSGTPEE  
 KVEADHRSVYVGNVDYGGSAEELAHF SRCGEVHRVTILCDKFSGHPKGYAIEFATKGSVQAAVELDQS  
 LFRGRVIKVLPKRTNFPGISSTRGGLRGHPGSRGAPFPHSGLQGRPRLRPQGNRARGKFSWFSFY

TRTRPLEQKLISEEDLAANDILDYKDDDDKV

**Chromatograms:** [https://cdn.origene.com/chromatograms/mk8043\\_e10.zip](https://cdn.origene.com/chromatograms/mk8043_e10.zip)

**Restriction Sites:** SgfI-MluI

**Cloning Scheme:**

Cloning sites used for ORF Shuttling:



\* The last codon before the Stop codon of the ORF

**ACCN:** NM\_001080487

**ORF Size:** 834 bp

**OTI Disclaimer:** The molecular sequence of this clone aligns with the gene accession number as a point of reference only. However, individual transcript sequences of the same gene can differ through naturally occurring variations (e.g. polymorphisms), each with its own valid existence. This clone is substantially in agreement with the reference, but a complete review of all prevailing variants is recommended prior to use. [More info](#)

**OTI Annotation:** This clone was engineered to express the complete ORF with an expression tag. Expression varies depending on the nature of the gene.

**Components:** The ORF clone is ion-exchange column purified and shipped in a 2D barcoded Matrix tube containing 10ug of transfection-ready, dried plasmid DNA (reconstitute with 100 ul of water).

**Reconstitution Method:**

1. Centrifuge at 5,000xg for 5min.
2. Carefully open the tube and add 100ul of sterile water to dissolve the DNA.
3. Close the tube and incubate for 10 minutes at room temperature.
4. Briefly vortex the tube and then do a quick spin (less than 5000xg) to concentrate the liquid at the bottom.
5. Store the suspended plasmid at -20°C. The DNA is stable for at least one year from date of shipping when stored at -20°C.

**RefSeq:** [NM\\_001080487.2](#)

**RefSeq Size:** 870 bp

**RefSeq ORF:** 837 bp

**Locus ID:** 390748

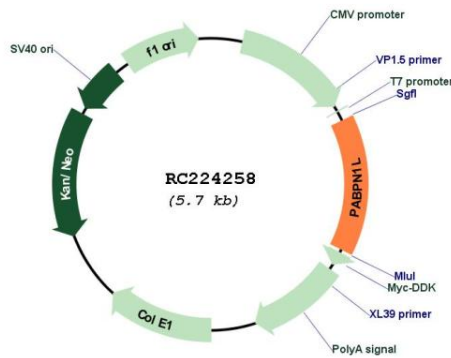
**UniProt ID:** [A6NDY0](#)

**Cytogenetics:** 16q24.3

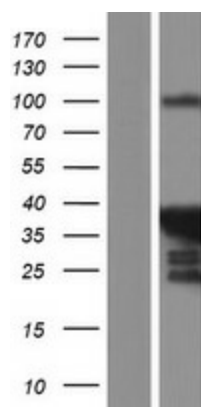
**MW:** 31.3 kDa

**Gene Summary:** Binds the poly(A) tail of mRNA.[UniProtKB/Swiss-Prot Function]

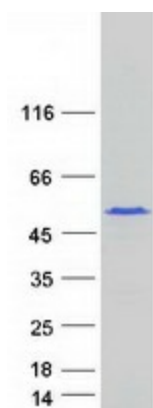
**Product images:**



Circular map for RC224258



Western blot validation of overexpression lysate (Cat# [LY421042]) using anti-DDK antibody (Cat# [TA50011-100]). Left: Cell lysates from untransfected HEK293T cells; Right: Cell lysates from HEK293T cells transfected with RC224258 using transfection reagent MegaTran 2.0 (Cat# [TT210002]).



Coomassie blue staining of purified PABPN1L protein (Cat# [TP324258]). The protein was produced from HEK293T cells transfected with PABPN1L cDNA clone (Cat# RC224258) using MegaTran 2.0 (Cat# [TT210002]).