

Product datasheet for RC224230

LTBP4 (NM_001042544) Human Tagged ORF Clone

Product data:

Product Type:	Expression Plasmids
Product Name:	LTBP4 (NM_001042544) Human Tagged ORF Clone
Tag:	Myc-DDK
Symbol:	LTBP4
Synonyms:	ARCL1C; LTBP-4; LTBP4L; LTBP4S
Mammalian Cell Selection:	Neomycin
Vector:	pCMV6-Entry (PS100001)
E. coli Selection:	Kanamycin (25 ug/mL)
ORF Nucleotide Sequence:	>RC224230 representing NM_001042544 Red=Cloning site Blue=ORF Green=Tags(s)

TTTTGTAATACGACTCACTATAGGGCGCCGGGAATTCGTCGACTGGATCCGGTACCGAGGAGATCTGCC
GCC**CGATCGCC**

ATGCCGAGGCTGGCACCAGCGGCCGCCCCCTCTGCTGGTGTGTGCTGCCGCTCTTCGAGCCG
CCACCTCCGCCGAGCCCCAGCCCCAGCCCCAGCCAGGTCGTCGAGGTCGCCGGGGTCCCCAGCCGCC
GGCCAGCGTTGCTGTTTGTGCTGCTGCCCGGCCAGACGCTAGGAGGAGCCGTCATCCGAGCCTT
TGCAGGGTCCGAAGCTGCCAGCCAAAAAGTGTGACGGCCCCAGCGGTGCTGAACCCAGTGCCTGCAG
TGCCAGTCCCAGCCCCAGCGTGAGGAAGAGACAGGTGTCCTCAACTGGCAGCCACTGACGCTCCAGGA
GGCCAGAGCTCTACTGAAGCGCCGGCGCCCGGGGGCCAGGGGGCCGGGACTACTGAGAAGGAGGCC
CCACAGCGTGCCCCGCTGGCAAGGCCCGGTCTGTGTCCTTATCTGTACAAATGGCCGTGTGTGCG
TGAAGCCTGACCCTGCTCTGTCCCCGGACTTCGCTGGCAAGTCTGCCAGTTGCACTCCTCGGGCGC
CCGGCCCCCGGCCCGGCTGTACCAGGCCTCACCCGCTCCGTGTACACTATGCCACTGGCCAACCACCGC
GACGACGAGCAGCGGTGGCATCTATGGTGAGCGTCCACGTGGAGCACCCGAGGAGCGTCCGTGGTG
TGCACCAGGTGGAGCGTGTGTGCCCCCTGGGAGGAGCGGACGCTGAGGCGTGGCGGGGGGAAGC
GGCGCGGGGGGAGGGCGGACGCCCTACACGGTGTGGCACAGAGCGCGCCGGGAGGACGGCTAC
TCAGATGCCTCGGGCTTCGGTTACTGCTTTCGGGAGCTGCGCGGAGGCGAATGCGCTCCCCGCTGCCCG
GGCTCCGGAGCGCAGGAGTCTGCTGCCAGGGGGCCGGCTTGGCCTGGGGGTTACGACTGTCAGCTGTG
CTCCGAGCGCTGGGAACTCCGAAAGAGTGAGCGCCCCAGATGGACCTTGTCCAACCGGCTTTGAAAGA
GTTAATGGGTCTGCGAAGATGTGGATGAGTGCAGACTGGCGGGCTGCCAGCACGGCAGTGTGCAA
ACACGCGGGGGTACAGTGTGTGCCCCGACGGCTTCTGCTCGACTCGTCCCGCAGCAGTGCAT
CTCCCAACAGTGTCTCAGAGGCCAAAGGCCCTGCTCCGCGTGTCCCGCAGCGGCTGTTTCGCTG
CCCATTCTGCGGAACATCACTAACAGATCTGCTGCTGCAGCCCGTAGGCAAGGCTGGGGCCGGGCT
GCCAGCTCTGCCACCTTCGGCTCAGAGGTTTCCGGGAGATCTGCCCGGCTGGTCTGTTACCTACTA
CTCGGCTCCGACTCCGCTACAACACCAGACCCCTGGGCCAGGACCCCGAGTGTCACTACGCCAG



[View online »](#)

CCTCGTACCCTGCCAGCCACCTCTCGGCCATCTGCAGGCTTTCTGCCACCCATCGCCTGGAGCCCCGGC
 CTGAACCCCGGCCGATCCCCGGCCCGGCCCTGAGCTTCCCTTGCCAGCATCCCTGCCTGGACTGGTCC
 TGAGATTCTGAATCAGGTCCCTCCTCCGGCATGTGTACGCGAACCCCCAGGTCTGCGGCCAGGACGC
 TGCATTTCCCGGCCAGCGGCTACACCTGCGCTTGCGACTCTGGCTTCCGGCTCAGCCCCAGGGCACCC
 GATGCATTGATGTGGACGAATGTGCGCCGTGCCCGCCCTGTGCTCCCGGGCCTGCGAGAATCACC
 AGGCAGCTTCCGCTGCGTGTGCGGCCGGGCTTCCGAGCCGCCACGGGCTGCGGAATGCCTGGATGTG
 GACGATGCCACCGCGTCCCGCCGCTGTGACCTCGGGCGCTGCGAGAACACGCCAGGCAGCTTCCCTGT
 GCGTGTGCCCGCGGGTACCAGGCTGCACCGCACGGAGCCAGCTGCCAGGATGTGGATGAATGCACCCA
 GAGCCCAGGCCTGTGTGCCGAGGGCCTGCAAGAACCCTGCCTGGCTCTTTCCGCTGTGTTTGCCCGCT
 GGCTTCCGGGGCTCGGCGTGTGAAGAGGATGTGGATGAGTGTGCCAGGAGCCGCCGCCCTGTGGGCCCG
 GCCGCTGTGACAAACAGGCAGGCTCCTTTACTGTGCCTGCCCTGCTGGCTTCCGCTCCCGAGGGCCCG
 GGCCCCGTGCAAGATGTGGATGAGTGTGCCGAAGCCCCACCTGCACCTACGGCCGGTGTGAGAAC
 ACAGAAGGCAGCTTCCAGTGTCTGCCCCATGGGCTTCAACCCAACACTGCTGGCTCCGAGTGCAGG
 ATGTGGATGAGTGTGAGAACCACCTGCATGCCCTGGCAGGAGTGTGTAACTCGCCCGCTCCTTCCA
 GTGCAGGACCTGTCTTCTGCCACCACCTGCACCGTGGCAGATGCACTGATGTGGACGAATGCAGTTCCG
 GGTGCCCTCCCTGTGGTCCCACGGCCACTGACTAACACCCGAAGGCTCCTTCCGCTGCAGCTGCGCGC
 CAGGCTACCGGGCGCCGTGCGGTGCGCCGGGCCCTGCGCAGACGTGAACGAGTGCCTGGAGGGCGATT
 CTGCTTCCCTCACGGCGAGTGCCTCAACACTGACGGCTCCTTTGCCTGTACTTGTGCCCTGGTACCGA
 CCCGGACCCCGGGAGCCTTTGCCTCGACGTTGACGAGTGCAGCGAGGAGGACCTTTGCCAGAGCGGCA
 TCTGTACCAACACCGACGGCTCCTTCGAGTGCATCTGTCTCCGGACACCGCGCTGGCCCGGACCTCGC
 CTCCTGCCTCGACGTGGACGAATGTGCGAGCGAGGCCAGCCCTGTGCGGGTGCAGCGCTGTGAGAAC
 TCTCCCGGCTCCTACCGCTGTGTCGGGACTGCGATCCTGGGTACCACCGGGGCCCGAGGGCACCTGTG
 ACGATGTGGATGAGTGCCAAGAATATGGTCCCGAGATTTGTGGAGCCAGCGTTGTGAGAACCACCTGG
 CTCTACCGCTGCACACCAGCCTGTGACCTGGCTATCAGCCCACGCCAGGGGGCCGATGCCAGGATGTG
 GACGAATGCCGAACCGTCTTCTGCGGTGCCACGCCGTGTGCCAGAACCCTGCCCGGCTCCTTCCAGT
 GCCTCTGTGACCAGGTTACGAGGGGACGGGATGGGCGTCACTGCGTGGATGTGAACGAGTGTGAAAC
 ACTACAGGGTGTATGTGGAGTGCCTGTGTGAAAATGTGCAAGGCTCCTTCCCTGTGTCTGCCCAAC
 AGCCCGGAAGAGTTTACCCCATGACTGGACGCTGTGTTCCCCACGAATTTCTGCTGGCAGTTCCAG
 GCTCGCAGCCCCAGGCACCTGTAGCCCCGTTCTGCCCGCAGGCCACCTCCGCCACCCCTGCCCGCCG
 ACCCAGCACACCTAGGCAGGGCCCTGTGGGAGTGGGCGCCGGGAGTGTACTTTGACACAGCGGCCCG
 GATGCATGTGACAACATCCTGGCTCGGAATGTGACATGGCAGGAGTGTGCTGTACTGTGGTGAGGGCT
 GGGGCAGCGGCTGCCGATCCAGCAGTCCCGGGCACCGAGACGCTGAGTACCAGTCAATGTGCCCTCA
 CGGCCGGGGCTACCTGGCGCCCAGTGGAGACCTGAGCCTCCGGAGAGACGTGGACGAATGTGAGCTTTC
 CGAGACCAGGTGTGCAAGAGTGGCGTGTGTGTGAACACGGCCCCGGGCTACTCATGCTATTGCGACAACG
 GCTACTACTACCACACAGCGGCTGGAGTGCATCGACAATGACGAGTGCGCCGATGAGGAACCGGCCTG
 TGAGGGCGGCCGCTGTGTCAACACTGTGGGCTCTTACTACTGTACCTGCGAGCCCCACTGGTGTGGAT
 GGCTCGCAGCGCCGCTGCGTCTCAACGAGAGCCAGAGCCTCGATGACAATCTGGGAGTGTGCTGGCAGG
 AAGTGGGGGCTGACCTCGTGTGCAGCCACCTCGGCTGGACCGTACAGCCACTACACAGAGTGTGCTG
 CCTGTATGGAGAGGCTTGGGCAATGGACTGCGCCCTCTGCCCTGCGCAGGACTCAGATGACTTCGAGGCC
 CTGTGCAATGTGCTACGCCCCCGCATATAGCCCCCGGACCGAGGTGGCTTTGACTCCCTACGAGT
 ACGGCCAGACTTAGGTCCACCTTACCAGGCCTCCCATATGGGCTGAGTTGTACCCACCACCTGCGCT
 ACCCTACGACCCCTACCCACCGCCACTGGGCCCTTCGCCCGCCGGGAGGCTCCTTATGGGGACCCCGC
 TTCGACATGCCAGACTTTGAGGACGATGGTGGCCCTATGGCGAATCTGAGGCTCCTGCGCCACCTGGCC
 CGGGCACCCGCTGGCCCTATCGTCCCGGACACCCGCCGCTCCTTCCAGAGCCCGAGGAGCCTCTGA
 AGGTGGAAGCTATGCTGGTTCCCTGGCTGAGCCCTACGAGGAGCTGGAGGCGGAGGAGTGCGGGATCCTG
 GACGGCTGCACCAACGGCCGCTGCGTGCCTGCCGTAAGGCTTACCTGCCGTTGCTTCGACGGCTACC
 GCCTGGACATGACCCGATGGCCTGCGTTGACATCAACGAGTGTGATGAGGCCGAGGCTGCCTCCCGCT
 GTGCGTCAACGCGGTTGCCTCAACACGGATGGCTCCTTCCGCTGCATCTGCCCGCCGGGATTGCAACC
 ACGCACCAGCCGACCACTGTGCGCCCGCACGGCCCCGGGCC

ACGCGTACGCGGCCGCTCGAGCAGAACTCATCTCAGAAGAGGATCTGGCAGCAAATGATATCCTGGATT
 ACAAGGATGACGACGATAAGGTTTAA

Protein Sequence: >RC224230 representing NM_001042544
 Red=Cloning site Green=Tags(s)

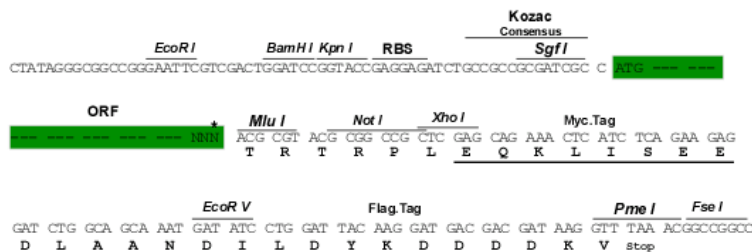
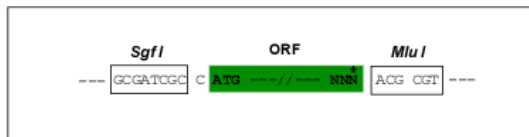
MPRPGTSGRRPLLLVLLPLFAAATSAASPSPPSPVVEVPGVPSRPASVAVCRCCPGQTSRRSRCIRAF
 CRVRSCQPKKAGPQRCLNPVPAVPSPPSVRKRQVSLNWQPLTLQEARALLKRRRPRGPGGRLLRRRP
 PQRAPAGKAPVLCPLICHNGGVCVKPDRCLCPPDFAGKFCQLHSSGARPPAPAVPGLTRSVYTMPLANHR
 DDEHGVASMVSVHVEHPQEASVVVHQVERVSGPWEEADAEAVARAEAAARAEAAAPYTVLAQSAPREDGY
 SDASGFGYCFRELRGECASPLPGLRTQEVCCRAGAGLAWGVHDCQLCSERLGNSESVAPDGPCTGFER
 VNGSCEDVDECATGGRCQHGEACANTRGGYTCVCPDGFLLDSSRSSCISQHVISEAKGPCFRVLRDGGCSL
 PILRNITKQICCCSRVGKAWGRGQCLPPFGSEGFREICPAGPGYHYSASDLRYNTRPLGQEPFRVLSLQ
 PRTLPAISRPSAGFLPTHRLRPRPEPRDPRGPELPLPSIPAWTGPEIPESGPPSSGMCQRNPQVCGPGR
 CISRPSGYTCACDSGFRLLSPQGTTRCIDVDECRVPPPCAPGRCEVSGFRVCGPGFRAGPRAAECLDV
 DECHRVPCCDLGRCENTPGSFLCVCAPAGYQAAPHGASCQDVDECTQSPGLCGRGACKNLPGSFRCVCPA
 GFRGSACEEDVDECAQEPCCPGPGRCDNTAGSFHCACAPAGFRSRGPGAPCQDVDECARSPPPCTYGRCEV
 TEGSFQCVCPMGFQPNNTAGSECEDVDECEVHLACPGQECVNSPGSFQCRTPSGHHLHRGCTDVECCSS
 GAPPCCPHGHCTNTEGSFRCSAPGYRAPSGRPGCADVNECLEGDFCFPHGECLNTDGSFACTCAPGYR
 PGPARGASCLDVDECEEDLCSGICTNTDGSFECICPPGHRAGPDLASCLDVDECREGPPALCGSQRCEN
 SPGSYRCVRDCDPGYHAGPEGTCDVDECEQYGPETCGAQRCEVTPGSYRCPACDPGYQTPGGGQDV
 DECRNRSFCGAHAVCQNLPGSFQCLCDQGYEGARDGRHCVVNECETLQGVCGAALCENVEGSLCVCNP
 SPEEFDPMTRGRCVPPRTSAGTFPGSQPQAPASVLPARPPPPPLPRRSTPRQGPVSGRRECYFDTAAP
 DACDNILARNVTWQECCTVGEVGGWGGSCRIQQCPGTETAEYQSLCPHGRGYLAPSGDLSLRDVECEQFL
 RDQVCKSGVVCVNTAPGYSCYCSNGYYYHTQRLECIDNDECADEEPAEGGRCVNTVGSYHCTCEPPLVD
 GSQRCVSNESQSLDDNLGVCWQEVGADLVC SHPRLDRQATYTECCCLYGEAWGMDCALCPAQSDDDFEA
 LCNVLRPPAYSPPRPGFGLPYEYGPDLGPPYQGLPYGPELYPPPALPYDPYPPPPGPFARREAPYGA
 FMPDFEDDGGPYGESEAPAPPGPGRWYRSDTRRSFPEPEEPEGGSYAGSLAEPYEELEAECEGIL
 DGCTNGRCVRVPEGFTCRCFDGYRLDMTRMACVDINECDEAEAASPLCVNARCLNTDGSFRCICRPFAP
 THQPHHCAPARPA

TRTRPLEQKLI SEEDLAANDILDYKDDDDKV

Restriction Sites:
Cloning Scheme:

SgfI-MluI

Cloning sites used for ORF Shuttling:

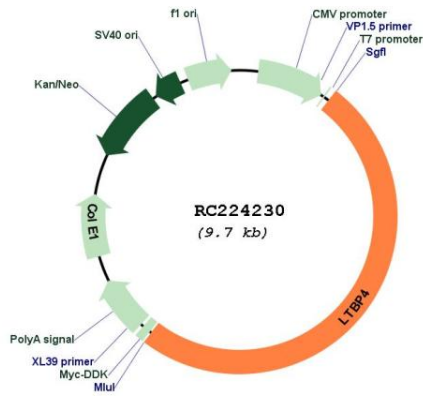


* The last codon before the Stop codon of the ORF

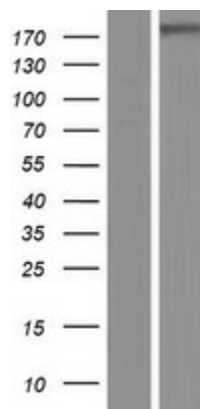
ACCN: NM_001042544

ORF Size:	4872 bp
OTI Disclaimer:	The molecular sequence of this clone aligns with the gene accession number as a point of reference only. However, individual transcript sequences of the same gene can differ through naturally occurring variations (e.g. polymorphisms), each with its own valid existence. This clone is substantially in agreement with the reference, but a complete review of all prevailing variants is recommended prior to use. More info
OTI Annotation:	This clone was engineered to express the complete ORF with an expression tag. Expression varies depending on the nature of the gene.
Components:	The ORF clone is ion-exchange column purified and shipped in a 2D barcoded Matrix tube containing 10ug of transfection-ready, dried plasmid DNA (reconstitute with 100 ul of water).
Reconstitution Method:	<ol style="list-style-type: none">1. Centrifuge at 5,000xg for 5min.2. Carefully open the tube and add 100ul of sterile water to dissolve the DNA.3. Close the tube and incubate for 10 minutes at room temperature.4. Briefly vortex the tube and then do a quick spin (less than 5000xg) to concentrate the liquid at the bottom.5. Store the suspended plasmid at -20°C. The DNA is stable for at least one year from date of shipping when stored at -20°C.
RefSeq:	NM_001042544.1 , NP_001036009.1
RefSeq Size:	5163 bp
RefSeq ORF:	4875 bp
Locus ID:	8425
UniProt ID:	Q8N2S1
Cytogenetics:	19q13.2
Protein Families:	Druggable Genome
MW:	173.3 kDa
Gene Summary:	The protein encoded by this gene binds transforming growth factor beta (TGFB) as it is secreted and targeted to the extracellular matrix. TGFB is biologically latent after secretion and insertion into the extracellular matrix, and sheds TGFB and other proteins upon activation. Defects in this gene may be a cause of cutis laxa and severe pulmonary, gastrointestinal, and urinary abnormalities. Three transcript variants encoding different isoforms have been found for this gene.[provided by RefSeq, May 2010]

Product images:



Circular map for RC224230



Western blot validation of overexpression lysate (Cat# [LY420974]) using anti-DDK antibody (Cat# [TA50011-100]). Left: Cell lysates from untransfected HEK293T cells; Right: Cell lysates from HEK293T cells transfected with RC224230 using transfection reagent MegaTran 2.0 (Cat# [TT210002]).