

Product datasheet for RC224222

ENDOGL1 (EXOG) (NM_005107) Human Tagged ORF Clone

Product data:

Product Type:	Expression Plasmids
Product Name:	ENDOGL1 (EXOG) (NM_005107) Human Tagged ORF Clone
Tag:	Myc-DDK
Symbol:	ENDOGL1
Synonyms:	ENDOGL1; ENDOGL2; ENGL; ENGL-a; ENGL-b; ENGLA; ENGLB
Mammalian Cell Selection:	Neomycin
Vector:	pCMV6-Entry (PS100001)
E. coli Selection:	Kanamycin (25 ug/mL)
ORF Nucleotide Sequence:	>RC224222 representing NM_005107 Red=Cloning site Blue=ORF Green=Tags(s)

TTTTGTAATACGACTCACTATAGGGCGGCCGGAATTCGTCGACTGGATCCGGTACCGAGGAGATCTGCC
GCC**CGATCGCC**

ATGGCTATCAAGAGTATCGCTTCCCGCCTCCGGGGTCCCGTCGTTTTCTGAGCGGCTTCGTGGCTGGGG
CTGTAGTGGGCGCTGCGGGAGCTGGGCTCGCGGCCCTGCAGTTCTTCCGGAGTCAGGGCGCTGAGGGAGC
GTTGACAGGGAAGCAGCCGGATGGATCTGCAGAAAAGGCTGTATTGGAACAATTTGGATTCCCTTAACT
GGAACAGAGGCAAGGTGTACACTAATCAGCTTTGTCTTATGATCAGGCAAAGCGGTGCCTAGATGGG
TTCTTGAACATATTTCCAAAAGCAAGATAATGGGTGATGCAGACAGAAAGCATTGTAATTTAAGCCTGA
TCCAATATCCCTCCAACCTTCAGTGCCTTCAATGAAGATTATGTTGGAAGTGGGTGGTACGAGGACAC
ATGGCTCCAGCAGGAAATAACAAATTTCAAGTAAAGCCATGGCTGAAACCTTTTACCTTCTAACATTG
TGCTCAGGATTTTGATAATAATTCTGGATATTGGAACAGAAATAGAAATGTAAGTCTGAGAGCTGACAGA
AAGTTTGAAGATGTTTGGGTGGTATCTGGGCCTTTGACCTTACCTCAGACTAGAGGCGATGGAAGAAA
ATAGTTAGTTACCAGGTGATTGGCGAGGACAACGTGGCAGTCCCCTCACACCTTTATAAGGTAATCCTGG
CCCGCAGAAGCTCAGTATCTACCGAACCACTGGCGCTAGGGGCCCTTTGTGGTACCAATGAAGCCATCGG
CTTCCAGCCCCAGTTAACTGAATCCAAGTGAGCCTCCAGGACCTAGAGAAGTTGTCAGGACTGGTGT
TTTCTCATTGGATAGAAGTATGATATCCGGAATATCTGCTCTGTTGGACACCTGAAGCTCCTGGATT
TCCAGGATTCACCTTGTACTTGAGTACAAGAAAGATTGAAGGAGCCCGATCAGTGTCTCAGACTGGAAAA
GATCATGGAAGAACTTGAAGAATGCAGAGATTGAACCAGATGATTACTTTATGAGTCGCTATGAGAAGAAG
CTAGAAGAACTCAAAGCTAAGGAGCAGTCAGGAACCCAGATAAGAAGCCATCC

ACGCGTACGCGGCCGCTCGAGCAGAAACTCATCTCAGAAGAGGATCTGGCAGCAAATGATATCCTGGATT
ACAAGGATGACGACGATAAGGTTTAA



[View online »](#)

Protein Sequence: >RC224222 representing NM_005107
Red=Cloning site Green=Tags(s)

MAIKSIASRLRGSRRFLSGFVAGAVVGAAGAGLAALQFFRSQGAEGALTGKQPDGSAEKAVLEQFGFPLT
 GTEARCYTNHALSYDQAKRVPRWVLEHISKSKIMGDADRKHKCFKPDNPPTTFSAFNEDYVGSWSRGH
 MAPAGNNKFSSKAMAETFYLSNIVPQDFDNNSGYWNRIEMYCRELTERFEDVWVVSGLTLPQTRGDGKK
 IVSYQVIGEDNVAVPSHLYKVILARRSSVSTEPLALGAFVVPNEAIGFQPQLTEFQVSLQDLEKLSGLVF
 FPHLDRTSDIRNICSVDTCCKLLDFQFTLYLSTRKIEGARSVLRLKIMENLNKNAEIEPDDYFMSRYEKK
 LEELKAKEQSGTQIRKPS

TRTRPLEQKLISEEDLAANDILDYKDDDDKV

Chromatograms: https://cdn.origene.com/chromatograms/mk6105_h11.zip

Restriction Sites: SgfI-MluI

Cloning Scheme:



* The last codon before the Stop codon of the ORF

ACCN: NM_005107

ORF Size: 1104 bp

OTI Disclaimer: The molecular sequence of this clone aligns with the gene accession number as a point of reference only. However, individual transcript sequences of the same gene can differ through naturally occurring variations (e.g. polymorphisms), each with its own valid existence. This clone is substantially in agreement with the reference, but a complete review of all prevailing variants is recommended prior to use. [More info](#)

OTI Annotation: This clone was engineered to express the complete ORF with an expression tag. Expression varies depending on the nature of the gene.

Components: The ORF clone is ion-exchange column purified and shipped in a 2D barcoded Matrix tube containing 10ug of transfection-ready, dried plasmid DNA (reconstitute with 100 ul of water).

Reconstitution Method:

1. Centrifuge at 5,000xg for 5min.
2. Carefully open the tube and add 100ul of sterile water to dissolve the DNA.
3. Close the tube and incubate for 10 minutes at room temperature.
4. Briefly vortex the tube and then do a quick spin (less than 5000xg) to concentrate the liquid at the bottom.
5. Store the suspended plasmid at -20°C. The DNA is stable for at least one year from date of shipping when stored at -20°C.

RefSeq: [NM_005107.4](#)

RefSeq Size: 1460 bp

RefSeq ORF: 1107 bp

Locus ID: 9941

UniProt ID: [Q9Y2C4](#)

Cytogenetics: 3p22.2

Domains: Endonuclease

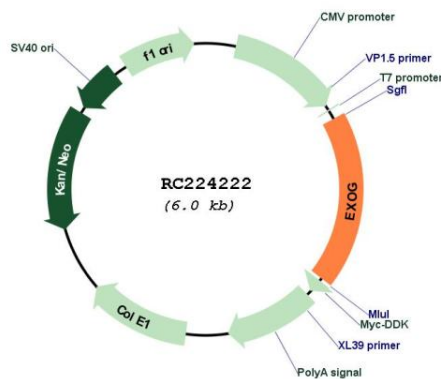
Protein Families: Druggable Genome, Transmembrane

Protein Pathways: Apoptosis

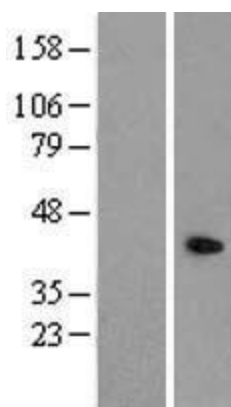
MW: 41.08 kDa

Gene Summary: This gene encodes an endo/exonuclease with 5'-3' exonuclease activity. The encoded enzyme catalyzes the hydrolysis of ester linkages at the 5' end of a nucleic acid chain. This enzyme is localized to the mitochondria and may play a role in programmed cell death. Alternatively spliced transcript variants have been described. A pseudogene exists on chromosome 18. [provided by RefSeq, Feb 2009]

Product images:



Circular map for RC224222



Western blot validation of overexpression lysate (Cat# [LY417521]) using anti-DDK antibody (Cat# [TA50011-100]). Left: Cell lysates from untransfected HEK293T cells; Right: Cell lysates from HEK293T cells transfected with RC224222 using transfection reagent MegaTran 2.0 (Cat# [TT210002]).