

Product datasheet for RC224221L1

GPR179 (NM_001004334) Human Tagged Lenti ORF Clone

Product data:

Product Type:	Expression Plasmids
Product Name:	GPR179 (NM_001004334) Human Tagged Lenti ORF Clone
Tag:	Myc-DDK
Symbol:	GPR179
Synonyms:	CSNB1E; GPR158L; GPR158L1
Mammalian Cell Selection:	None
Vector:	pLenti-C-Myc-DDK (PS100064)
E. coli Selection:	Chloramphenicol (34 ug/mL)
ORF Nucleotide Sequence:	The ORF insert of this clone is exactly the same as(RC224221).
Restriction Sites:	SgfI-RsrII
Cloning Scheme:	

Cloning sites used for ORF Shuttling:



* The last codon before the Stop codon of the ORF.

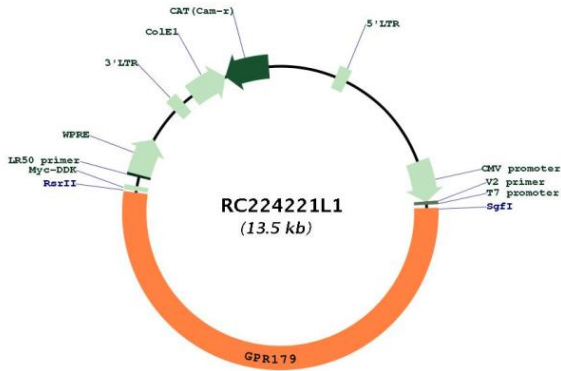
ACCN:	NM_001004334
ORF Size:	7101 bp



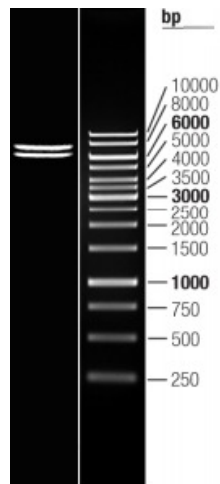
[View online >](#)

OTI Disclaimer:	The molecular sequence of this clone aligns with the gene accession number as a point of reference only. However, individual transcript sequences of the same gene can differ through naturally occurring variations (e.g. polymorphisms), each with its own valid existence. This clone is substantially in agreement with the reference, but a complete review of all prevailing variants is recommended prior to use. More info
OTI Annotation:	This clone was engineered to express the complete ORF with an expression tag. Expression varies depending on the nature of the gene.
Components:	The ORF clone is ion-exchange column purified and shipped in a 2D barcoded Matrix tube containing 10ug of transfection-ready, dried plasmid DNA (reconstitute with 100 ul of water).
Reconstitution Method:	<ol style="list-style-type: none">1. Centrifuge at 5,000xg for 5min.2. Carefully open the tube and add 100ul of sterile water to dissolve the DNA.3. Close the tube and incubate for 10 minutes at room temperature.4. Briefly vortex the tube and then do a quick spin (less than 5000xg) to concentrate the liquid at the bottom.5. Store the suspended plasmid at -20°C. The DNA is stable for at least one year from date of shipping when stored at -20°C.
RefSeq:	NM_001004334.1
RefSeq Size:	7980 bp
RefSeq ORF:	7104 bp
Locus ID:	440435
UniProt ID:	Q6PRD1
Cytogenetics:	17q12
Protein Families:	Druggable Genome, Transmembrane
MW:	257.2 kDa
Gene Summary:	This gene encodes a member of the glutamate receptor subfamily of G protein-coupled receptors. The encoded protein has an EGF-like calcium binding domain and a seven transmembrane domain in the N-terminal region of the protein. Mutations in this gene are associated with congenital stationary night blindness type 1E. [provided by RefSeq, Apr 2012]

Product images:



Circular map for RC224221L1



Double digestion of RC224221L1 using SgfI and RsrII