

Product datasheet for RC224213

THSD4 (NM_024817) Human Tagged ORF Clone

Product data:

Product Type:	Expression Plasmids
Product Name:	THSD4 (NM_024817) Human Tagged ORF Clone
Tag:	Myc-DDK
Symbol:	THSD4
Synonyms:	ADAMTSL-6; ADAMTSL6; FVSY9334; PRO34005
Mammalian Cell Selection:	Neomycin
Vector:	pCMV6-Entry (PS100001)
E. coli Selection:	Kanamycin (25 ug/mL)
ORF Nucleotide Sequence:	>RC224213 representing NM_024817 Red=Cloning site Blue=ORF Green=Tags(s)

TTTTGTAATACGACTCACTATAGGGCGGCCGGAATTCGTCGACTGGATCCGGTACCGAGGAGATCTGCC
GCC**CGATCGCC**

ATGGTTTCCCATTTCATGGGGTCTCTCAGTGTCTGTGTTTCCTTCTGCTGCTTGGATTCCAGTTCGTCT
GCCACAGCCCTCACTCAACACAGGAAGTCCCGCAGCGGATGGCGGCGGAGGGCGCCCCGAGGACGA
CGGCGGCGGCGGCCCGGGAGTGTGGGGCGCTGGGGCCCTGGTCCGCTGCTCGCGTAGCTGCAGC
GGCGCGTGATGGAGCAGACGCGGCCCTGCCTGCCCGCTCTACCGCTGCGCGGCGGCCAGCGGCTG
GCGCCCTGCGCGCGCTTCGCGGACCAGTGGTGTGCGCGGTGCGCACGTCGGTGCCACTGCACCGGAG
CCGCGACGAGACGCCAGCGCTGGCCGTACGGACGCCAGCGCCAGGGCCCCACGGTGTGCGAGGACG
CGGCACCCACAGCCCCAGGGCCTCGAAGTCACTGGGGACAGAAGGAGCAGGACCCGTGGTACCATTGGCC
CTGGCAAGTATGGCTATGGTAAGGCCCATATATCTTACCACTGCAGACAGACACTGCACACAGCCACA
GAGGCTCCGGAGACAGAAGCTCTCATCCCGCCATTCCAGTCCCAGGGAGCATCTTCTGTAGGCATGGC
TACAGTTCACCAGCCACCAGTCCCCAACATGGGCCTTTGTACCAAAGTGACAGTGGCCCTCGCTCTG
GACTGCAGGCTGCGGAGGCCCATCTACCAGTACCTTTGACCCATGATCAAGGCTACCCTGCAGCTTC
AAGTCTCTTTACAGCCAGAAACAAGCAACAACACCGGTGTGGGACCCATGGGCAACTCAGAGCTTC
TCTCAGCTGCCGATCTACAGCAATCTCATGCATCGGGCCTATCGGCAGTACAAGCTGTCAACACCA
ACGTATGTCCAGAAAGCAGTAGAAGTATCCGGGAGGTACAGTGTGCATCCTACAACAACAAGCCATTCT
GGGCCGTTTTATGAGTGGGAACATTTGCAGAAGTAAAAGGCAATCGAAATGTGAGTTGAACTGCCAG
GCAATGGGCTACCGCTTCTATGTACGGCAAGCTGAGAAAGTCATCGATGGCACCCCTGTGACCAGAACG
GCACGGCCATCTGTGTCTGGGCAGTGAAGAGCATTGGCTGTGATGACTACTTAGGCTCCGACAAAGT
CGTGGACAAATGTGGGTGTGTGGAGGAGACAACACGGGCTGTCAGGTTGTGCGGGCTGTTAAGCAT
GCCCTACCAGCCTGGGCTACCACCGCTCGTGGAGATCCCAGGGAGCCAGAAAATCAACATCACGG
AGATGTACAAGAGCAACAATTTGGCCCTGAGAAGTCGTTCTGGACGCTCCATCATCAATGGAACTG
GGCAATTGATCGACCAGGAAAATACGAGGGCGGAGGGACCATGTTACCTACAAGCGTCAAATGAGATT



[View online >](#)

TCGAGCACTGCCGGAGAGTCCTTTTTGGCGGAAGGTCCCACCAACGAGATCTTGGATGTCTACATGATAC
 ACCAGCAGCCAAACCCAGGCGTGCCTACGAGTACGTGATCATGGGGACCAACGCCATCAGCCCCAGGT
 GCCACCCACAGGAGACCAGGGGAACCTTCAATGGCCAGATGGTGACAGAAGGCAGGAGCCAGGAGGAG
 GGAGAACAGAAAGGGAGGAACGAGGAGAAGGAAGACTTGGTGGGGAGGCCCTGAGATGTTACCTCAG
 AATCGGCACAGACCTTCCAGTCAGGCATCCAGACAGATTTTCTCCCATCGACCCGACAACCTTGGTGCC
 ACCAGCACCCGAGCCCCACGGCGAGCCGGATCACAACCTGGAAGCAGCTTGGGACAACAGAATGTTCC
 ACGACCTGTGGAAAGGATCGCAGTACCTATTTTCCGCTGTGTGCACAGAAGCACTCATGAAGAGGCTC
 CTGAGAGTTACTGTGACTCCAGCATGAAGCCGACCCCGAGGAGGCCCTGCAACATCTTCCCTTGCCC
 AGCCTTCTGGGACATCGGGGAGTGGTCTGAGTGCAGCAAGACCTGTGGCCTGGGCATGCAGCACCCGCCAG
 GTTCTGTGCCCCAGGTGTACGCCAACCGCAGCCTGACGGTGCAGCCCTACCGCTGCCAGCACCTGGAGA
 AACCTGAGACCACCAGCACCTGCCAACTCAAGATCTGCAGCGAGTGGCAGATCCGGACCGACTGGACCTC
 GTGCTCGGTGCCCTGCGGCGTGGGACAGAGGACCCGTGATGTGAAGTGTGTGAGCAACATTGGGGATGTG
 GTTGACGATGAGGAATGCAACATGAAGCTCCGGCCGAATGACATTGAGAAGTGGCAGATGGGACCTGTG
 CCAAGAGCTGGTTCCTCACCGAGTGGAGCGAAAGGTGCTCAGCGGAGTGTGGGGCCGGAGTGGGACACG
 CTCGGTGGTGTGCATGACCAACCATGTGACGAGCCTGCCCTGGAGGGCTGTGGGAAACACCGCCGGCA
 GAGGCCACCCATGTGACAACGGACCTGCACGGCAAGGTGGAGTGGTTTGCCGGGAGCTGGAGTCACT
 GTTCCATCGAGTGTGGGAGCGGGACGCAACAGAGGGAGGTGATTTGTGTTAGAAAAGTGCAGACACCTT
 TGAAGTGTGGACCCCTCTGAATGTTCTTCTGGAGAAACCCCCAGCCAGCAATCCTGCCACCTCAAG
 CCTTGGCGAGCCAAATGGTTTAGCACCGAATGGAGCATGTGTTCAAGAGCTGCCAGGTTGGCTTTCGGG
 TCCGGGAAGTGGGTGTCTGTCTGATGACATGACTCTAAGTAACCTCTGTGACCCCTAGTTGAAACCAGA
 AGAGAGAGAATCTTGAACCCCTCAGGACTGTGTCCCTGAAGTTGATGAAAAGTGCAGGACAAGTACTAC
 AACTGCAACGTGGTGGTCCAGGCAAGACTCTGTGTCTACAACACTACAAGACCCCTGCTGTGCCTCCT
 GCACCCGTGTGGCAACAGGCAGACGGGCTTCTGGGGAGCAGA

ACGCGTACGCGGCCGCTCGAGCAGAACTCATCTCAGAAGAGGATCTGGCAGCAATGATATCCTGGATT
 ACAAGGATGACGACGATAAGGTTTAA

Protein Sequence:

>RC224213 representing NM_024817
 Red=Cloning site Green=Tags(s)

MVSHFMGSLSVLFLLLLLGFQFVCPQPSTQHRKVPQRMAAEGAPEDDGGGGAPGVWAWGPWSACSRS
 GGVEQTRPCLPRSYRLRGGQRPGAPARAFADHVVSAVRTSVPLHRSRDETPALAGTDASRQGPTVLRGS
 RHPQPQGLEVTGDRRSRTRGTIGPGKYGYGKAPYILPLQTDHTPQRLRRQKLSRHSRSQGASSARHG
 YSSPAHQVPHGPLYQSDSGPRSGLQAAEAPIYQLPLTHDQGYPAASSLFHSPETSNNHGVGTHGATQSF
 SQPARSTAIISGAYRQYKLCNTNVCPESSRSIREVQCASYNKPFMGRFYEWEPFAEVKGNKCELNCQ
 AMGYRFYVRQAEKVIDGTPCDQNGTAICVSGQCKSIGCDDYLGSDKVVDKCGVCGGDNTGCQVVSQVFKH
 ALTSLGYHRVVEIPEGATKINITEMYKSNNYLALRSRSGRSIINGNWAIDRPGKYEGGTMFTYKRPNEI
 SSTAGESFLAEGPTNEILDVYMIHQPNPQVHYEYVIMGTNAISPQVPPHRRPGEPFNGQMVTEGRSQEE
 GEQKGRNEEKEDLRGEAPEMFTSESAQTFPVRHPDRFSPHRPDNLVPPAPQPPRRSRDHNKQLGTTECS
 TTCGKGSQYPIFRVHRSTHEEAPESYCDSSMKPTPEEEPCNIFPCPAFWDIGEWSECSKTCGLGMQHRQ
 VLCRQVYANRSLTVQPYRCQHLEKPETTSTCQLKICSEWQIRTDWTSVPCVGVQTRDVKCVSNIQDV
 VDDEECNMKLRPNDIENCDMGPCAKSWFLTEWSECSAECGAGVTRRSVCMNHNHSSLPLEGCGNNRPA
 EATPCDNGPCTGKVEWFAWSWSQCSIECGSGTQQREVICVRKNADTFEVLDPSECSFLEKPPSQSCHLK
 PCGAKWFSTEWSMCSKSCQGGFRVREVRCLSDDMTSLNCDPQLKPEERESCNPQDCVPEVDENCKDKYY
 NCNVVVQARLCVYNYKYTACCASCTRVANRQTGFLGSR

TRTRPLEQKLISEEDLAANDILDYKDDDDKV

Chromatograms:

https://cdn.origene.com/chromatograms/mk8116_h08.zip

Restriction Sites:

Sgfl-Mlul

Cloning Scheme:


ACCN: NM_024817

ORF Size: 3054 bp

OTI Disclaimer: Due to the inherent nature of this plasmid, standard methods to replicate additional amounts of DNA in E. coli are highly likely to result in mutations and/or rearrangements. Therefore, OriGene does not guarantee the capability to replicate this plasmid DNA. Additional amounts of DNA can be purchased from OriGene with batch-specific, full-sequence verification at a reduced cost. Please contact our customer care team at custsupport@origene.com or by calling 301.340.3188 option 3 for pricing and delivery.

The molecular sequence of this clone aligns with the gene accession number as a point of reference only. However, individual transcript sequences of the same gene can differ through naturally occurring variations (e.g. polymorphisms), each with its own valid existence. This clone is substantially in agreement with the reference, but a complete review of all prevailing variants is recommended prior to use. [More info](#)

OTI Annotation: This clone was engineered to express the complete ORF with an expression tag. Expression varies depending on the nature of the gene.

Components: The ORF clone is ion-exchange column purified and shipped in a 2D barcoded Matrix tube containing 10ug of transfection-ready, dried plasmid DNA (reconstitute with 100 ul of water).

Reconstitution Method:

1. Centrifuge at 5,000xg for 5min.
2. Carefully open the tube and add 100ul of sterile water to dissolve the DNA.
3. Close the tube and incubate for 10 minutes at room temperature.
4. Briefly vortex the tube and then do a quick spin (less than 5000xg) to concentrate the liquid at the bottom.
5. Store the suspended plasmid at -20°C. The DNA is stable for at least one year from date of shipping when stored at -20°C.

RefSeq: [NM_024817.2](#), [NP_079093.2](#)

RefSeq Size: 9145 bp

RefSeq ORF: 3057 bp

Locus ID: 79875

UniProt ID: [Q6ZMP0](#)

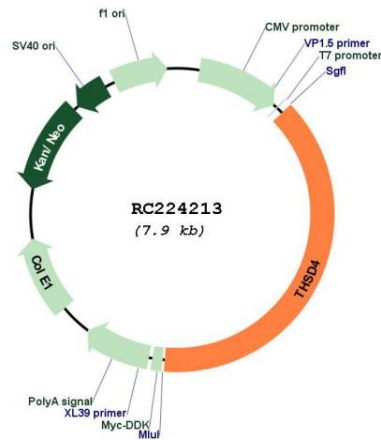
Cytogenetics: 15q23

Domains: tsp_1

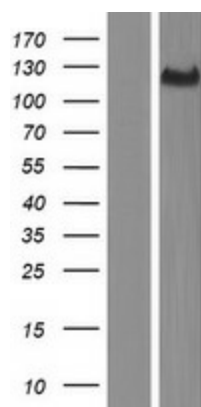
MW: 112.3 kDa

Gene Summary: Promotes FBN1 matrix assembly. Attenuates TGFB signaling, possibly by accelerating the sequestration of large latent complexes of TGFB or active TGFB by FBN1 microfibril assembly, thereby negatively regulating the expression of TGFB regulatory targets, such as POSTN (By similarity).[UniProtKB/Swiss-Prot Function]

Product images:



Circular map for RC224213



Western blot validation of overexpression lysate (Cat# [LY411038]) using anti-DDK antibody (Cat# [TA50011-100]). Left: Cell lysates from untransfected HEK293T cells; Right: Cell lysates from HEK293T cells transfected with RC224213 using transfection reagent MegaTran 2.0 (Cat# [TT210002]).