

Product datasheet for RC224211

DR3 (TNFRSF25) (NM_148966) Human Tagged ORF Clone

Product data:

Product Type:	Expression Plasmids
Product Name:	DR3 (TNFRSF25) (NM_148966) Human Tagged ORF Clone
Tag:	Myc-DDK
Symbol:	DR3
Synonyms:	APO-3; DDR3; DR3; GEF720; LARD; PLEKHG5; TNFRSF12; TR3; TRAMP; WSL-1; WSL-LR
Mammalian Cell Selection:	Neomycin
Vector:	pCMV6-Entry (PS100001)
E. coli Selection:	Kanamycin (25 ug/mL)
ORF Nucleotide Sequence:	>RC224211 representing NM_148966 Red=Cloning site Blue=ORF Green=Tags(s)

TTTTGTAATACGACTCACTATAGGGCGGCCGGAATTCGTCGACTGGATCCGGTACCGAGGAGATCTGCC
GCC**CGATCGCC**

ATGGAGCAGCGGCCGCGGGGCTGCGCGCGGTGGCGCGCGCTCCTCCTGGTGTCTGCTGGGGGCCGGG
CCCAGGGCGCACTCGTAGCCCCAGGTGTGACTGTGCCGGTACTCCACAAGAAGATTGGTCTGTTTTG
TTGAGAGGCTGCCAGCGGGGCACTACCTGAAGGCCCTTGACGGAGCCCTGCGGCACTCCACCTGC
CTTGTGTGTCCCAAGACACCTTCTTGGCCTGGGAGAACCACCATAATTCTGAATGTGCCGCTGCCAGG
CCTGTGATGAGCAGGCCCTCCAGGTGGCGCTGGAGAAGTTCAGCAGTGGCCGACACCCGCTGTGGCTG
TAAGCCAGGCTGGTTTGTGGAGTGCCAGGTGAGCAATGTGTGACAGTTCACCCCTCTACTGCCAACCA
TGCCCTAGACTGCGGGGCCCTGCACCGCCACACACGGCTACTCTGTTCCCGCAGAGATACTGACTGTGGGA
CCTGCCTGCCTGGCTTCTATGAACATGGCGATGGCTGCGTGCCTGCCACGAGCACCCCTGGGGAGCTG
TCCAGAGCGCTGTGCCGCTGTCTGTGGCTGGAGGCAGAAATGAAGCTGGGATGGAGGCTCTGACCCACCA
CCGGCCACCCATCTGTACCCCTGGACAGCGCCACACCCCTCTAGCACCTCCTGACAGCAGTGAGAAGA
TCTGCACCGTCCAGTTGGTGGTAACAGCTGGACCCCTGGCTACCCCGAGACCCAGGAGGCGCTCTGCC
GCAGGTGACATGGTCTGGGACCACTGGCCAGCAGAGCTCTGGCCCGCTGCTGCGCCACACTCTCG
CCAGATCCCCAGCCGGCTCGCCAGCATTGATGCTGCAGCCGGGCCGAGCTACGACGTGATGGAGC
CGGTCCCAGCGCGCGCTGGAAGGAGTTCTGTCGCACGCTGGGGCTGCGCGAGGCAGAGATCGAAGCCGT
GGAGGTGAGATCGGCCCTTCCGAGACCAGCAGTACGAGATGCTCAAGCGCTGGCGCCAGCAGAGCC
GCGGGCTCGGAGCCGTTTACGCGGCCCTGGAGCGCATGGGGCTGGACGCTGCGTGAAGACTTGC
GCCGCTGCAGCGCGGCCG

ACGCGTACGCGGCCGCTCGAGCAGAACTCATCTCAGAAGAGGATCTGGCAGCAATGATATCCTGGATT
ACAAGGATGACGACGATAAGGTTTAA



[View online >](#)

Protein Sequence: >RC224211 representing NM_148966
Red=Cloning site Green=Tags(s)

MEQRPRGCAVA AALLVLLGARAQGGTRSPRCDCAGDFHKKIGLFCRGCYPAGHYLKAPCTEPCGNSTC
 LVCPQDTFLAWENHHNSECARCQACDEQASQVALENCASAVADTRCGCKPGWFVECVSQQVSSPFYCQP
 CLDCGALHRHTRLLCSRRTDCGTCLPGFYEHDGCVSPTSTLGSCPERCAAVCGWRQNEAGMEALTPP
 PATHLSPLDSAHTLLAPPDSSEKICTVQLVGNWTPGYPETQEALCPQVTWSWDQLPSRALGPAAPTLS
 PESPAGSPAMMLQPGPQLYDVM DAVPARRWKEFVRTLGLREAEIEAVEVEIGRFRDQQYEMLKRWRQQP
 AGLGAVYAALERMGLDGCVEDLRSRLQ RGP

TRTRPLEQKLISEEDLAANDILDYKDDDDKV

Chromatograms: https://cdn.origene.com/chromatograms/mk8056_a08.zip

Restriction Sites: SgfI-MluI

Cloning Scheme:



ACCN: NM_148966

ORF Size: 1140 bp

OTI Disclaimer: The molecular sequence of this clone aligns with the gene accession number as a point of reference only. However, individual transcript sequences of the same gene can differ through naturally occurring variations (e.g. polymorphisms), each with its own valid existence. This clone is substantially in agreement with the reference, but a complete review of all prevailing variants is recommended prior to use. [More info](#)

OTI Annotation: This clone was engineered to express the complete ORF with an expression tag. Expression varies depending on the nature of the gene.

Components: The ORF clone is ion-exchange column purified and shipped in a 2D barcoded Matrix tube containing 10ug of transfection-ready, dried plasmid DNA (reconstitute with 100 ul of water).

Reconstitution Method:

1. Centrifuge at 5,000xg for 5min.
2. Carefully open the tube and add 100ul of sterile water to dissolve the DNA.
3. Close the tube and incubate for 10 minutes at room temperature.
4. Briefly vortex the tube and then do a quick spin (less than 5000xg) to concentrate the liquid at the bottom.
5. Store the suspended plasmid at -20°C. The DNA is stable for at least one year from date of shipping when stored at -20°C.

RefSeq: [NM_148966.1](#), [NP_683867.1](#)

RefSeq Size: 1527 bp

RefSeq ORF: 1143 bp

Locus ID: 8718

UniProt ID: [Q93038](#)

Cytogenetics: 1p36.31

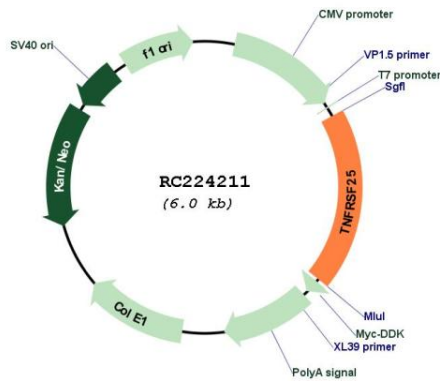
Protein Families: Druggable Genome, Transmembrane

Protein Pathways: Cytokine-cytokine receptor interaction

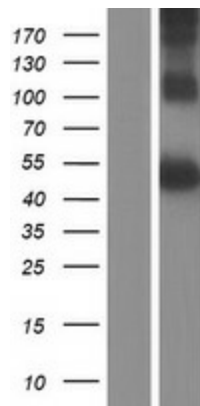
MW: 38.7 kDa

Gene Summary: The protein encoded by this gene is a member of the TNF-receptor superfamily. This receptor is expressed preferentially in the tissues enriched in lymphocytes, and it may play a role in regulating lymphocyte homeostasis. This receptor has been shown to stimulate NF-kappa B activity and regulate cell apoptosis. The signal transduction of this receptor is mediated by various death domain containing adaptor proteins. Knockout studies in mice suggested the role of this gene in the removal of self-reactive T cells in the thymus. Multiple alternatively spliced transcript variants of this gene encoding distinct isoforms have been reported, most of which are potentially secreted molecules. The alternative splicing of this gene in B and T cells encounters a programmed change upon T-cell activation, which predominantly produces full-length, membrane bound isoforms, and is thought to be involved in controlling lymphocyte proliferation induced by T-cell activation. [provided by RefSeq, Jul 2008]

Product images:



Circular map for RC224211



Western blot validation of overexpression lysate (Cat# [LY407711]) using anti-DDK antibody (Cat# [TA50011-100]). Left: Cell lysates from untransfected HEK293T cells; Right: Cell lysates from HEK293T cells transfected with RC224211 using transfection reagent MegaTran 2.0 (Cat# [TT210002]).