

## Product datasheet for RC224210

### PHMX (TSPAN32) (NM\_139022) Human Tagged ORF Clone

#### Product data:

Product Type:	Expression Plasmids
Product Name:	PHMX (TSPAN32) (NM_139022) Human Tagged ORF Clone
Tag:	Myc-DDK
Symbol:	PHMX
Synonyms:	ART1; PHMX; PHMX; TSSC6
Mammalian Cell Selection:	Neomycin
Vector:	pCMV6-Entry (PS100001)
E. coli Selection:	Kanamycin (25 ug/mL)
ORF Nucleotide Sequence:	>RC224210 representing NM_139022 Red=Cloning site Blue=ORF Green=Tags(s)

TTTGTGAATACGACTCACTATAGGGCGGCCGGAATTCGTCGACTGGATCCGGTACCGAGGAGATCTGCC  
 GCC**CGCATCGC**

ATGGGGCCTTGAGTCGAGTCAGGGTTGCCAAATGCCAGATGCTGGTCACCTGCTTCTTTATCTTGCTGC  
 TGGGCCTCTCTGTGGCCACCATGGTGACTCTTACCTACTTCGGGGCCCACTTTGCTGTATCCGCCGAGC  
 GTCCCTGGAGAAGAACCCGTACCAGGCTGTGCACCAATGGGCCTTCTCTCGGGGTTGAGCCTGGTGGGC  
 CTCCTGACTCTGGGAGCCGTGCTGAGCGCTGCAGCCACCGTGAGGGAGGCCAGGGCCTCATGGCAGGGG  
 GCTTCCTGTGCTTCTCCCTGGCGTTCTGCGCACAGGTGCAGGTGGTGTCTGGAGACTCCACAGCCCCAC  
 CCAGGTGGAGGACGCCATGCTGGACACCTACGACCTGGTATATGAGCAGGCGATGAAAGGTACGTCCAC  
 GTCCGGCGGCAGGAGCTGGCGGCCATCCAGGACGTGTTTCTGTGCTGTGGGAAGAAGTCTCCTTTACGCC  
 GTCTGGGGAGCACAGAGGCTGACCTGTGTGAGGAGAGGAGGCGCGAGAGAGGACTGCCTTCAGGGCAT  
 CCGGAGCTTCTGAGGACACACCAGCAGGTGCGCTCCAGCCTGACCAGCATCGGCCTGGCCCTCACGGTG  
 TCCGCCTTGCTCTTCAGCTCCTTCTGTGGTTTGCCATCCGCTGTGGCTGCAGCTTGACCGCAAGGGCA  
 AATACACCCTGACCCACGAGCATGTGGCCGCCAGCCCCAGGAGCCAGCCTCTTGAGATGCTCCAGGG  
 TGGACCCACACATTGTCTCCACTCCGAAGCAGTTGCTATTGGTCCAAGAGGATGCTCGGGTAGTCTTCGG  
 TGGCTGCAGGAGAGCGATGCTGCGCCTTGCCCTCTCCTGCCACCTGGCTGCCACAGAGCTCTCCAGG  
 GCAGAAGTCGCGGTGGGCTCAGTGGGTGCCCTGAGCGGGTCTCTCAGAC

**ACGCGT**ACGCGGCCGCTCGAGCAGAACTCATCTCAGAAGAGGATCTGGCAGCAATGATATCCTGGATT  
 ACAAGGATGACGACGATAAGGTTTAA


[View online »](#)

**Protein Sequence:** >RC224210 representing NM\_139022  
 Red=Cloning site Green=Tags(s)

MGPWSRVRAKQMLVTCFFILLGLSVATMVTLYFGAHFAVIRRASLEKNPYQAVHQWAFSAGLSLVG  
 LLTLGAVLSAAATVREAQGLMAGGFLCFSLAFCAQVQVFWRLHSPTQVEDAMLDYDLVYEAMKGTSH  
 VRRQELAAIQDVFLCCGKKSPFSRLGSTADLCQGEAAAREDCQGIRSFRLRTHQQVASSLTSIGLALT  
 V SALLFSSFLWF AIRCGCSLDRKGKYLTPRACGRQPQEPSLLRCSQGGPTHCLHSEAVAIGPRGCSGSLR  
 WLQESDAAPLPLSCHLAHRAHQGRSRGGLSGCPEGLSD

TRTRPLEQKLISEEDLAANDILDYKDDDDKV

**Chromatograms:** [https://cdn.origene.com/chromatograms/mk8116\\_h07.zip](https://cdn.origene.com/chromatograms/mk8116_h07.zip)

**Restriction Sites:** SgfI-MluI

**Cloning Scheme:**



**ACCN:** NM\_139022

**ORF Size:** 960 bp

**OTI Disclaimer:** The molecular sequence of this clone aligns with the gene accession number as a point of reference only. However, individual transcript sequences of the same gene can differ through naturally occurring variations (e.g. polymorphisms), each with its own valid existence. This clone is substantially in agreement with the reference, but a complete review of all prevailing variants is recommended prior to use. [More info](#)

**OTI Annotation:** This clone was engineered to express the complete ORF with an expression tag. Expression varies depending on the nature of the gene.

**Components:** The ORF clone is ion-exchange column purified and shipped in a 2D barcoded Matrix tube containing 10ug of transfection-ready, dried plasmid DNA (reconstitute with 100 ul of water).

**Reconstitution Method:**

1. Centrifuge at 5,000xg for 5min.
2. Carefully open the tube and add 100ul of sterile water to dissolve the DNA.
3. Close the tube and incubate for 10 minutes at room temperature.
4. Briefly vortex the tube and then do a quick spin (less than 5000xg) to concentrate the liquid at the bottom.
5. Store the suspended plasmid at -20°C. The DNA is stable for at least one year from date of shipping when stored at -20°C.

**Note:** Plasmids are not sterile. For experiments where strict sterility is required, filtration with 0.22um filter is required.

**RefSeq:** [NM\\_139022.3](#)

**RefSeq Size:** 1376 bp

**RefSeq ORF:** 963 bp

**Locus ID:** 10077

**UniProt ID:** [Q96QS1](#)

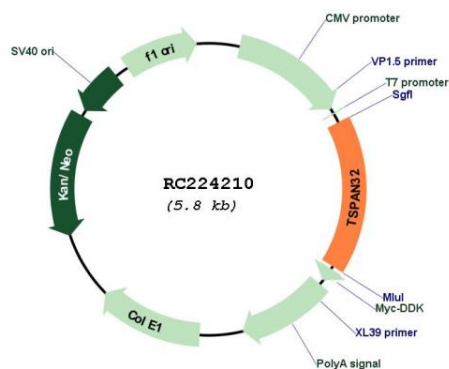
**Cytogenetics:** 11p15.5

**Protein Families:** Transmembrane

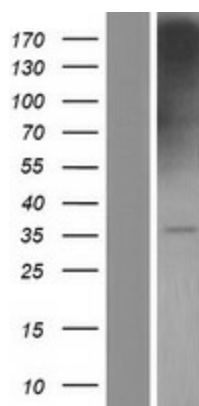
**MW:** 34.5 kDa

**Gene Summary:** This gene, which is a member of the tetraspanin superfamily, is one of several tumor-suppressing subtransferable fragments located in the imprinted gene domain of chromosome 11p15.5, an important tumor-suppressor gene region. Alterations in this region have been associated with Beckwith-Wiedemann syndrome, Wilms tumor, rhabdomyosarcoma, adrenocortical carcinoma, and lung, ovarian and breast cancers. This gene is located among several imprinted genes; however, this gene, as well as the tumor-suppressing subchromosomal transferable fragment 4, escapes imprinting. This gene may play a role in malignancies and diseases that involve this region, and it is also involved in hematopoietic cell function. Alternatively spliced transcript variants have been described, but their biological validity has not been determined. [provided by RefSeq, Jul 2008]

## Product images:



Circular map for RC224210



Western blot validation of overexpression lysate (Cat# [LY408323]) using anti-DDK antibody (Cat# [TA50011-100]). Left: Cell lysates from untransfected HEK293T cells; Right: Cell lysates from HEK293T cells transfected with RC224210 using transfection reagent MegaTran 2.0 (Cat# [TT210002]).