

Product datasheet for **RC224209**

ENOX2 (NM_006375) Human Tagged ORF Clone

Product data:

Product Type:	Expression Plasmids
Product Name:	ENOX2 (NM_006375) Human Tagged ORF Clone
Tag:	Myc-DDK
Symbol:	ENOX2
Synonyms:	APK1; COVA1; tNOX
Mammalian Cell Selection:	Neomycin
Vector:	pCMV6-Entry (PS100001)
E. coli Selection:	Kanamycin (25 ug/mL)



[View online »](#)

ORF Nucleotide Sequence:

>RC224209 representing NM_006375
 Red=Cloning site Blue=ORF Green=Tags(s)

TTTTGTAATACGACTCACTATAGGGCGGCCGGAATTCGTCGACTGGATCCGGTACCGAGGAGATCTGCC
 GCC**CGGATCGCC**

ATGACACTACCTATGTCTGATCCAACCTGCATGGGCCACAGCAATGAATAATCTTGAATGGCACCCTGG
 GAATTGCCGGACAACCAATTTTACCTGACTTTGATCCTGCTCTTGAATGATGACTGGAATTCACCAAT
 AACTCCAATGATGCCTGGTTTGGGAATAGTACCTCCACCAATTCCTCCAGATATGCCAGTAGTAAAAGAG
 ATCATACACTGTAAAAGCTGCACGCTCTTCCCTCCAAATCCAAATCTCCACCTCCTGCAACCCGAGAAA
 GACCACCAGGATGCAAAACAGTATTTGTGGTGGTCTGCCTGAAAATGGGACAGAGCAAATCATTGTGGA
 AGTTTTCGAGCAGTGTGGAGAGATCATTGCCATTCGAAGAGCAAGAAGAACTTCTGCCACATTCGCTTT
 GCTGAGGAGTACATGGTGGACAAAGCCCTGTATCTGTCTGGTTACCGCATTCGCCTGGGCTCTAGTACTG
 ACAAGAAGGACACAGGCAGACTCCACGTTGATTCGCACAGGCTCGAGATGACCTGTATGAGTGGGAGTG
 TAAACAGCGTATGCTAGCCAGAGAGGAGCGCCATCGTAGAAGAATGGAAGAAGAAAGATTGCGTCCACCA
 TCTCCACCCCACTGGTCCACTATTCAGATCATGAATGCAGCATTGTTGCTGAAAAATAAAAGATGATT
 CCAAAATCTCAGAAGCTGTACAGACCTTGTACTGGATAGAGCGAGGAGAGGTCAACCGTCGTAGCGC
 CAATAACTTCTACTCCATGATCCAGTCGGCCAACAGCCATGTCCGCCCTGGTGAACGAGAAAGCTGCC
 CATGAGAAAGATATGGAAGAAGCAAAGGAGAAGTTCAGCAGGCCCTTTCTGGAATTCATTCAATTTG
 AGCAGATAGTGGCTGTGTACCATTCCGCCTCCAAGCAGAAGGCATGGGACCACCTCACAAAAGCCAGCG
 GAAGAACATCAGCGTGTGGTGAACAAGCTGAGGAAATTCGCAACATTCATAATGATGAATTAATGGGA
 ATCAGCGGAGAAGAAGAAATGGAATGTCTGATGATGAAATAGAAGAAATGACAGAAAACAAAAGAACTG
 AGGAATCAGCCTTAGTATCACAGGCAGAAGCTCTGAAGGAAGAAATGACAGCCTCCGTTGGCAGCTCGA
 TGCTTACCGGAATGAAGTAGAAGTGTCTCAAGCAAGAACAAGGCAAGTCCACAGAGAAGATGACCCTAAC
 AAAGAACAGCAGCTGAAACTCCTGCAACAGCCCTGCAAGGAATGCAACAGCATCTACTCAAAGTCCAAG
 AGGAATACAAAAGAAAGAAAGCTGAACTTGAAAACTCAAAGTGAACAAGTTACAGGTGGAAAAATGTT
 GGAAAACTTAAAGAAAAGGAAAGCTGTGCTTCTAGGCTGTGTGCCTCAAACCAGGATAGCGAATACCTT
 CTTGAGAAGACCATGAACAGCAGTCCTATCAAATCTGAACGTGAAGCACTGCTAGTGGGGATTATCTCCA
 CATTCTTCATGTTACCCATTTGGAGCAAGCATTGAATACATCTGTTCTACTTGCACCGTCTTGATAA
 TAAGATCTGCACCAGGATGTGGAGTGTCTCATGGGTAGACTCCAGCATACTTCAAGCAGGAAATGACT
 GGAGTTGGAGCCAGCCTGAAAAGAGATGGAATTTCTGTGGCTTCGAGGGCTTGAAGCTGACC

ACGCGTACGCGGCCGCTCGAGCAGAAACTCATCTCAGAAGAGGATCTGGCAGCAAATGATATCCTGGATT
 ACAAGGATGACGACGATAAGGTTTAA

Protein Sequence:

>RC224209 representing NM_006375
 Red=Cloning site Green=Tags(s)

MTLPMSDPTAWATAMNNLGMAPLGIAGQPILPDFDPALGMMTGIPPITPMPPLGIVPPPIPPDPMPVKE
 I IHCKSCTLFPPNPNLPPPATRRERPPGCKTVFVGLPENGTEQIIVEVFEQCGEIIAIRKSKKNFCHIRF
 AEEYMDKALYLSGYRIRLGSSTDKKDTGRLHVDFAQARDDL YEWCKQRMLAREERHRRMEERLRPP
 SPPPVVHYSDECSIVAELKDDSKFSEAVQTLT WIERGEVNRRSANNFYSMIQSANSVHRRLVNEKAA
 HEKDMEEAKEFKQALSGILIQFEQIVAVYHSASKQKAWDHFTKAQRKNISVWCKQAEERIRNIHNDEL
 MGIRREEEMEMSDDEIEEMTETKETEEESALVSQAEALKEENDSLRWQLDAYRNEVELLKQEQKVHREDDPN
 KEQQLKLLQALQGMQQHLLKVQEEYKKEAELEKLDKQLQVEKMLENLKEKESASRLCASNQDSEYP
 LEKTMNSSPIKSREALLVGIISTFLHVHPFGASIEYICSYLHRLDNKICTSDVECLMGLRQHTFKQEMT
 VVGASLEKRWKFCGFEGCLKT

TRTRPLEQKLISEEDLAANDILDYKDDDDKV

Chromatograms:

https://cdn.origene.com/chromatograms/mg4432_d07.zip

Restriction Sites:

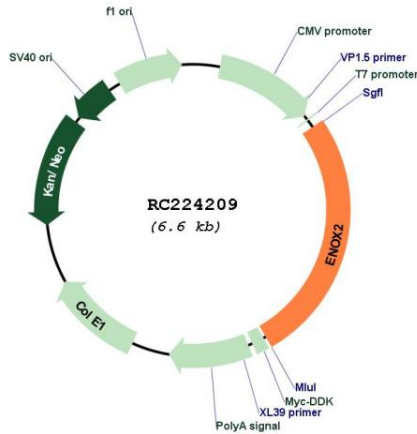
Sgfl-Mlul

Protein Families: Secreted Protein

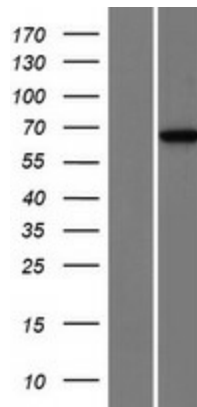
MW: 66.4 kDa

Gene Summary: This gene is a tumor-specific member of the ECTO-NOX family of genes that encode cell surface NADH oxidases. The encoded protein has two enzymatic activities: catalysis of hydroquinone or NADH oxidation, and protein disulfide interchange. The protein also displays prion-like properties. Alternative splicing results in multiple transcript variants. [provided by RefSeq, Aug 2013]

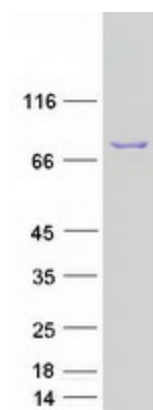
Product images:



Circular map for RC224209



Western blot validation of overexpression lysate (Cat# [LY416684]) using anti-DDK antibody (Cat# [TA50011-100]). Left: Cell lysates from untransfected HEK293T cells; Right: Cell lysates from HEK293T cells transfected with RC224209 using transfection reagent MegaTran 2.0 (Cat# [TT210002]).



Coomassie blue staining of purified ENOX2 protein (Cat# [TP324209]). The protein was produced from HEK293T cells transfected with ENOX2 cDNA clone (Cat# RC224209) using MegaTran 2.0 (Cat# [TT210002]).