

Product datasheet for **RC224208**

GPR142 (NM_181790) Human Tagged ORF Clone

Product data:

Product Type:	Expression Plasmids
Product Name:	GPR142 (NM_181790) Human Tagged ORF Clone
Tag:	Myc-DDK
Symbol:	GPR142
Synonyms:	GPRg1b; PGR2
Mammalian Cell Selection:	Neomycin
Vector:	pCMV6-Entry (PS100001)
E. coli Selection:	Kanamycin (25 ug/mL)



[View online »](#)

ORF Nucleotide Sequence:

>RC224208 representing NM_181790
 Red=Cloning site Blue=ORF Green=Tags(s)

TTTTGTAATACGACTCACTATAGGGCGGCCGGAATTCGTCGACTGGATCCGGTACCGAGGAGATCTGCC
 GCC**CGGATCGCC**

ATGAGTATTATGATGTTGCCCATGGAGCAAAGATCCAGTGGTCCCCTTCCCTCGAGGACATCACTG
 CTGTCCTGGGTACAGAAGCATATACTGAGGAAGACAAATCAATGGTGTCCCATGCACAGAAAAGCCAGCA
 TTCTTGTCTCAGCCATTCAGGTGGCTGAGGTCTCCACAGGTCACAGGGGAAGCTGGGACCTCCGAATA
 AGGCCATCAAGGACTCCAGCAGTTTCCGCCAGGCTCAGTGTCTGCGTAAGGATCCTGGGCAAACAACC
 ACTTGGAGAGCCAAGGGGTGAGAGGTACAGCTGGCGATGCTGACAGGGAGCTGCGGGACCTCAGAAAA
 AGCCACAGCTGGCCAGCCACGAGTGACCCTGCTGCCACGCCACGTCAGCGGGCTGAGCCAGGAGTTT
 GAAAGCCACTGGCCAGAGATCGCAGAGAGGTCCCCGTGTGGCTGGCGTCATCCCTGTCATCTACTACA
 GTGTCTGCTGGCTTGGGGCTGCCTGTCAGCCTCCTGACCGCAGTGGCCCTGGCGGCCTTGCCACCAG
 GACCAGGAGGCCCTCCTACTACTACCTTCTGGCGCTCACAGCCTCGGATATCATATCCAGTGGTCATC
 GTGTTCCGGGGTTCCTCCTGCAGGGAGCAGTGTGGCCCGCCAGGTGCCCCAGGCTGTGGTGGCCACGG
 CCAACATCCTGGAGTTTCTGCCAACCACGCCTCAGTCTGGATCGCCATCCTGCTCACGGTTGACCGCTA
 CACTGCCCTGTGCCACCCCTGCACCATCGGGCCGCTCGTCCCAGGCCGACCCGCCGGGCCATTGCT
 GCTGTCCTGAGTGTGCCTGTTGACCGGCATCCCCTTCTACTGGTGGCTGGACATGTGGAGAGACCCG
 ACTCACCCAGAACACTGGACGAGGTCTCAAGTGGGCTCACTGTCTCACTGTCTATTTTATCCCTTGTGG
 CGTGTTCCTGGTCACTCAACTCGGCCATCATCCACCGCTACGGAGGAGGGCCGGAGTGGGCTGCAGCCC
 CGGGTGGCAAGAGCACAGCCATCCTCCTGGGCATCACCACACTGTTACCCCTCCTGTGGGCGCCCGGG
 TCTTCGTCATGCTTACCACATGTACGTGGCCCTGTCCACCGGACTGGAGGTTCCACCTGGCCCTTGG
 TGTGGCCAATATGGTGGCCATGCTCCACAGGCAGCCAACCTTCGGCCTCTACTGCTTTGTCAGCAAGACT
 TTCGGGGCCACTGTCCGACAGGTATCCACGATGCCTACCTGCCCTGCACTTTGGCATCACAGCCAGAGG
 GCATGGCGGCGAAGCCTGTGATGGAGCCTCCGGGACTCCCACAGGGGCGAGAAGTG

ACGCGTACGCGGCCGCTCGAGCAGAACTCATCTCAGAAGAGGATCTGGCAGCAATGATATCCTGGATT
 ACAAGGATGACGACGATAAGGTTTAA

Protein Sequence:

>RC224208 representing NM_181790
 Red=Cloning site Green=Tags(s)

MSIMMLPMEQKIQWVPTSLQDITAVLGTEAYTEEDKSMVSHAQKSQHSLSHSRWLRSPQVTGGSWDLRI
 RPSKSSFRQAQCLRKDPGANNHLESQGVVGTAGDADREL RGPSEKATAGQPRVTLTPHVSGLSQEF
 ESHWPEIAERSPCVAGVIPVIYYSVLLGLLPVSLLTAVALARLATRTRRPSYYLLAL TASDIIQVVI
 VFAGFLLQGAVLARQVPQAVVRTANILEFAANHASVWIAILLTVDRYTALCHPLHHRASSPGRTRRAIA
 AVLSAALLTGIPFYWMLDMWRDTPRTLDEVLKWHL TYYFIPCGVFLVTNSAIHRLRRRGRSGLQP
 RVGKSTAILLGITTLFTLLWAPRVFVMLYHMYVAPVHRDWRVHLALDVANMVAMLHTAANFGLYCFVSKT
 FRATVRQVIHDAYLPCTLASQPEGMAAKPVMEPPGLPTGAEV

TRTRPLEQKLISEEDLAANDILDYKDDDDKV

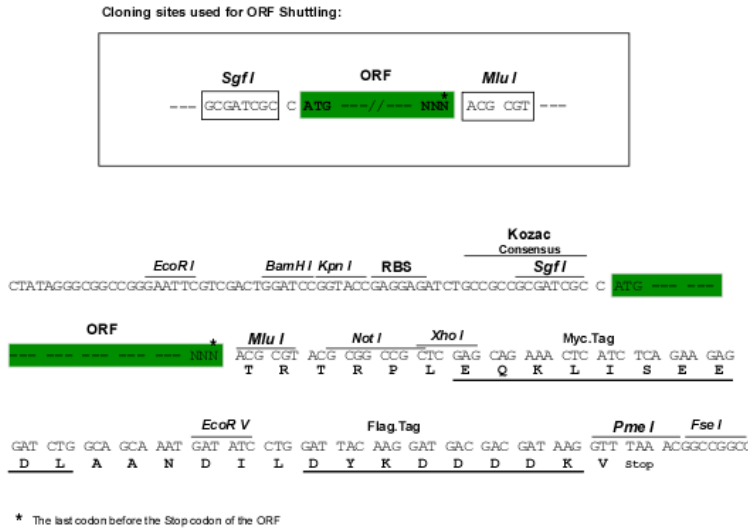
Chromatograms:

https://cdn.origene.com/chromatograms/ja1392_d08.zip

Restriction Sites:

Sgfl-Mlul

Cloning Scheme:



ACCN: NM_181790

ORF Size: 1386 bp

OTI Disclaimer: The molecular sequence of this clone aligns with the gene accession number as a point of reference only. However, individual transcript sequences of the same gene can differ through naturally occurring variations (e.g. polymorphisms), each with its own valid existence. This clone is substantially in agreement with the reference, but a complete review of all prevailing variants is recommended prior to use. [More info](#)

OTI Annotation: This clone was engineered to express the complete ORF with an expression tag. Expression varies depending on the nature of the gene.

Components: The ORF clone is ion-exchange column purified and shipped in a 2D barcoded Matrix tube containing 10ug of transfection-ready, dried plasmid DNA (reconstitute with 100 ul of water).

Reconstitution Method:

1. Centrifuge at 5,000xg for 5min.
2. Carefully open the tube and add 100ul of sterile water to dissolve the DNA.
3. Close the tube and incubate for 10 minutes at room temperature.
4. Briefly vortex the tube and then do a quick spin (less than 5000xg) to concentrate the liquid at the bottom.
5. Store the suspended plasmid at -20°C. The DNA is stable for at least one year from date of shipping when stored at -20°C.

RefSeq: [NM_181790.1](#), [NP_861455.1](#)

RefSeq Size: 1389 bp

RefSeq ORF: 1389 bp

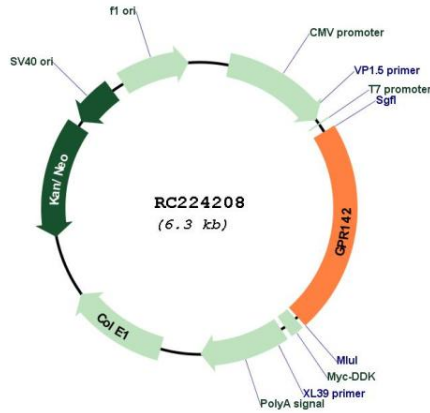
Locus ID: 350383

UniProt ID: [Q7Z601](#)

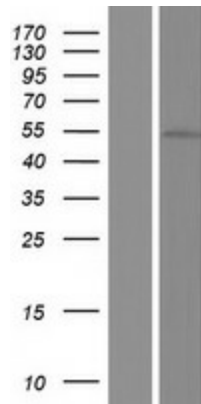
Cytogenetics: 17q25.1

Protein Families: Druggable Genome, GPCR, Transmembrane
MW: 50.9 kDa
Gene Summary: GPR142 is a member of the rhodopsin family of G protein-coupled receptors (GPRs) (Fredriksson et al., 2003 [PubMed 14623098]).[supplied by OMIM, Mar 2008]

Product images:



Circular map for RC224208



Western blot validation of overexpression lysate (Cat# [LY405621]) using anti-DDK antibody (Cat# [TA50011-100]). Left: Cell lysates from untransfected HEK293T cells; Right: Cell lysates from HEK293T cells transfected with RC224208 using transfection reagent MegaTran 2.0 (Cat# [TT210002]).