

## Product datasheet for RC224206

### PTAR1 (NM\_001099666) Human Tagged ORF Clone

#### Product data:

Product Type:	Expression Plasmids
Product Name:	PTAR1 (NM_001099666) Human Tagged ORF Clone
Tag:	Myc-DDK
Symbol:	PTAR1
Mammalian Cell Selection:	Neomycin
Vector:	pCMV6-Entry (PS100001)
E. coli Selection:	Kanamycin (25 ug/mL)
ORF Nucleotide Sequence:	>RC224206 representing NM_001099666 Red=Cloning site Blue=ORF Green=Tags(s)

TTTTGTAATACGACTCACTATAGGGCGGCCGGAATTCGTCGACTGGATCCGGTACCGAGGAGATCTGCC  
GCCCGATCGCC

ATGGCCGAGACCAGCGAGGAGGTGGCGGTGCTGGTGCAGCGGGTTGTGAAGGACATCACTAACGCCTTCA  
GGAGGAACCCACACATAGATGAAATTGGCTGATCCCATGTCCTGAAGCTAGGTATAACCGGAGTCCCAT  
AGTCTGGTTGAAAACAACTGGGTGTGGAGAGCTGGTGTGTCAAGTTCCTTTTACCATATGTCCACAAC  
AAGCTCCTTTTGTACAGAACAAGAAAGCAATGGCTGAACAGAGATGAATTGATAGATGTCACATGTACCC  
TGCTGCTTCTAAACCCAGACTTTACCCTGCATGGAACGTGAGGAAAGAGCTGATCCTCTCTGGCACTTT  
AAATCCAATTAAGGATTTACATCTGGGAAAACCTGCCTTAACCAAGTTTCCAAGAGTCCAGAAACATGG  
ATTCACAGGCGATGGGTGCTACAACAGCTAATTCAGAAACCTCCTTGCCTTCTTTGTGACCAAAGGAA  
ACTTGGGAACAATTCCCACAGAAAGGGCACAGCGACTCATACAAGAAGAGATGGAGGTCTGTGGTGAAGC  
AGCAGGGAGATACCCAAGCAACTATAATGCTTGGTCCCATCGCATCTGGGTTTTACAGCACTTGGCCAAG  
CTAGATGTCAAGATTCCTTGTGAACTATCTTCTACTAAACATTGGGCATCTATGCACGTTTCAGACC  
ACAGTGGATTTCACTACCGCCAGTTTTTGCTTAAGTCTTTGATTAGCCAACTGTGATAGACAGTTCCTGT  
GATGGAGCAAAAATCCTTTGAGAAGTGAAGCCAGCCCTAGTTCCTCCAAAAGATGAAGAAGCAGCAGTTTCA  
ACAGAAGAACCAAGGATTAATCTTCCCCTCTTCTAGAAGAAGAAGTTGAATTCAGCACTGATCTTATTG  
ATTCTACCCAGGACATGAAACCTTTGGTGTGATAGGCGGCATATTTTCTACCTTCAGCATCACTTAAA  
TGCAGGCTCCCAGCTGTCTCAAGCAATGGAAGTAGATGGACTGAATGACTCTAGCAAGCAAGGCTATTCC  
CAGGAAACCAAACGCCTGAAGCGGACGCCAGTTCCAGACTCCCTAGGCCTAGAAATGGAGCACAGGTTCA  
TTGATCAAGTATTGTCCACCTGTGCGAAGCTGGAGCAAGCCAGGTTTCCAGTGCATACAGGAAATGGCT  
GGTACTTTGAGTCAA

ACGCGTACGCGGCCGCTCGAGCAGAAAACCTCATCTCAGAAGAGGATCTGGCAGCAAATGATATCCTGGATT  
ACAAGGATGACGACGATAAGGTTTAA



[View online »](#)

**Protein Sequence:** >RC224206 representing NM\_001099666  
Red=Cloning site Green=Tags(s)

MAETSEEVAVLVQRVVKDITNAFRRNPHIDEIGLIPCPEARYNRSPIVLVENKLGVESWCVKFLLPYVHN  
 KLLL YRTRKQWLN RDEL IDVTCTLLLLNPDFTTAWNVRKELILSGTLNPIKDLHLGKLALTKF PKSPETW  
 IHRRWVLQQLIQETSLPSFVTKGNLGTIPTERAQRLIQEEMEVCGEAAGRYPNSYNAWSHRIWVLOHLAK  
 LDVKILLDELSSTKHWASMHVSDHSGFHRYRQFLKSLISQTVIDSSVMEQNPLRSEPALVPPKDEEAAYS  
 TEEPRLNPHLLLEEEVEFSTDLIDSYPGHETLWCHRRHIFYLQHHLNAGSQLSQAMEVDGLNDSSKQGYS  
 QETKRLK RTPVPDSLGLEMEHRFIDQVLSTCRNVEQARFASAYRKWLVTL SQ

TRTRPLEQKLISEEDLAANDILDYKDDDDKV

**Chromatograms:** [https://cdn.origene.com/chromatograms/mk8043\\_f06.zip](https://cdn.origene.com/chromatograms/mk8043_f06.zip)

**Restriction Sites:** SgfI-MluI

**Cloning Scheme:**

Cloning sites used for ORF Shuttling:



\* The last codon before the Stop codon of the ORF

**ACCN:** NM\_001099666

**ORF Size:** 1206 bp

**OTI Disclaimer:** The molecular sequence of this clone aligns with the gene accession number as a point of reference only. However, individual transcript sequences of the same gene can differ through naturally occurring variations (e.g. polymorphisms), each with its own valid existence. This clone is substantially in agreement with the reference, but a complete review of all prevailing variants is recommended prior to use. [More info](#)

**OTI Annotation:** This clone was engineered to express the complete ORF with an expression tag. Expression varies depending on the nature of the gene.

**Components:** The ORF clone is ion-exchange column purified and shipped in a 2D barcoded Matrix tube containing 10ug of transfection-ready, dried plasmid DNA (reconstitute with 100 ul of water).

**Reconstitution Method:**

1. Centrifuge at 5,000xg for 5min.
2. Carefully open the tube and add 100ul of sterile water to dissolve the DNA.
3. Close the tube and incubate for 10 minutes at room temperature.
4. Briefly vortex the tube and then do a quick spin (less than 5000xg) to concentrate the liquid at the bottom.
5. Store the suspended plasmid at -20°C. The DNA is stable for at least one year from date of shipping when stored at -20°C.

**Note:** Plasmids are not sterile. For experiments where strict sterility is required, filtration with 0.22um filter is required.

**RefSeq:** [NM\\_001099666.2](#)

**RefSeq Size:** 10057 bp

**RefSeq ORF:** 1209 bp

**Locus ID:** 375743

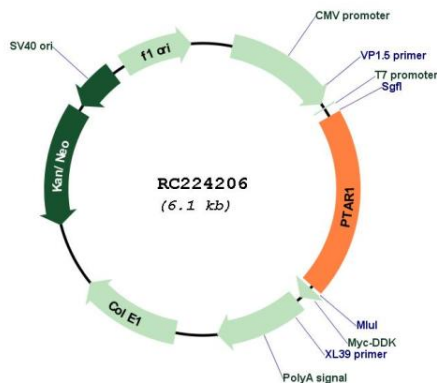
**UniProt ID:** [Q7Z6K3](#)

**Cytogenetics:** 9q21.12

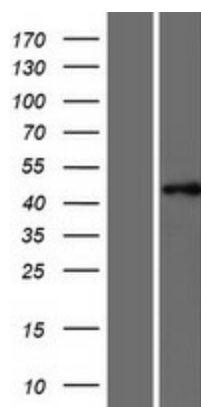
**Protein Families:** Druggable Genome

**MW:** 46.2 kDa

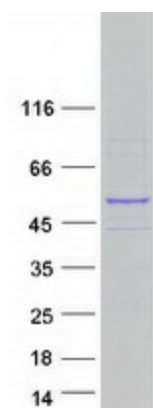
**Product images:**



Circular map for RC224206



Western blot validation of overexpression lysate (Cat# [LY420480]) using anti-DDK antibody (Cat# [TA50011-100]). Left: Cell lysates from untransfected HEK293T cells; Right: Cell lysates from HEK293T cells transfected with RC224206 using transfection reagent MegaTran 2.0 (Cat# [TT210002]).



Coomassie blue staining of purified PTAR1 protein (Cat# [TP324206]). The protein was produced from HEK293T cells transfected with PTAR1 cDNA clone (Cat# RC224206) using MegaTran 2.0 (Cat# [TT210002]).