

## Product datasheet for **RC224204**

### RGS3 (NM\_144489) Human Tagged ORF Clone

#### Product data:

Product Type:	Expression Plasmids
Product Name:	RGS3 (NM_144489) Human Tagged ORF Clone
Tag:	Myc-DDK
Symbol:	RGS3
Synonyms:	C2PA; RGP3
Mammalian Cell Selection:	Neomycin
Vector:	pCMV6-Entry (PS100001)
E. coli Selection:	Kanamycin (25 ug/mL)
ORF Nucleotide Sequence:	>RC224204 representing NM_144489 Red=Cloning site Blue=ORF Green=Tags(s)

TTTTGTAATACGACTCACTATAGGGCGGCCGGAATTCGTCGACTGGATCCGGTACCGAGGAGATCTGCC  
GCC**CGATCGCC**

ATGGTAACGAGGAGGCCAGTCACAAATAGCTGGGACTGGCTTCTGCCGGGGCGGCCCCAGAGGCTGTCC  
CTTGCAGACACATGCCCCTTTCACGGCTCCCTCTCAGGGTTGGCCAGAAGGAATTTTTTTTCCGCTCCC  
CCTCCTGGTCCCTCCATTTCTGGCTCCTCTGTCTGAGTCCCAGCCCCGGCTTGTGCCTGGGAGTCCA  
GTCATCAGGCCAGGATTCAGAGAGCGTGTGTGGCTGCAGCCTGCACCGTTGCTGCCCGTGCCAGGAC  
GCGGGGTGGGGACAGGAGCCAGAGTGGTGCCTCTACAGACCAATCTGCGGCCCAAGGTGGGGGCCC  
TACAGAGATGCTCCGAGGCATGTACCTCACTCGCAACGGGAACCTGCAGAGGCGACACAGATGAAGGAA  
GCCAAGGACATGAAGAACAAGCTGGGGATCTTACAGCGCGGAATGAGTCCCCTGGAGCCCTCCCGCGG  
GCAAGGCAGACAAAATGATGAAGTCATTCAAGCCACCTCAGAGGAAGCCCTCAAGTGGGGCGAGTCCTT  
GGAGAAGCTGCTGGTTCACAAATACGGGTAGCAGTGTCCAAGCCTTCTTCGCACTGAGTTCAGTGAG  
GAGAATCTGGAGTCTGGTTGGCTTGTGAGGACTTCAAGAAGGTCAAGTCAAGTCAAGATGGCATCCA  
AGGCCAAGAAGATCTTTGCTGAATACATCGCGATCCAGGCATGCAAGGAGGTCAACCTGGACTCTACAC  
GCGGGAGCACACCAAGGACAACCTGCAGAGCGTCACGCGGGGCTGCTTCGACCTGGCACAGAAGCGCATC  
TTCGGGCTCATGAAAAGGACTCGTACCCTCGTTTCTCCGTTCTGACCTCTACCTGGACCTTATTAACC  
AGAAGAAGATGAGTCCCCCGCTT

**ACGCGT**ACGCGGCCGCTCGAGCAGAAACTCATCTCAGAAGAGGATCTGGCAGCAAATGATATCCTGGATT  
ACAAGGATGACGACGATAAGGTTTAA



[View online »](#)



**Reconstitution Method:**

1. Centrifuge at 5,000xg for 5min.
2. Carefully open the tube and add 100ul of sterile water to dissolve the DNA.
3. Close the tube and incubate for 10 minutes at room temperature.
4. Briefly vortex the tube and then do a quick spin (less than 5000xg) to concentrate the liquid at the bottom.
5. Store the suspended plasmid at -20°C. The DNA is stable for at least one year from date of shipping when stored at -20°C.

**RefSeq:** [NM\\_144489.3](#)

**RefSeq Size:** 1773 bp

**RefSeq ORF:** 579 bp

**Locus ID:** 5998

**UniProt ID:** [P49796](#)

**Cytogenetics:** 9q32

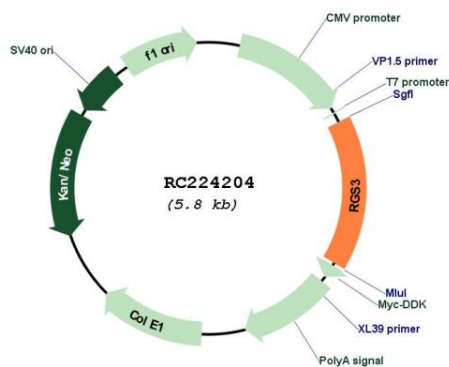
**Protein Families:** Druggable Genome

**Protein Pathways:** Axon guidance

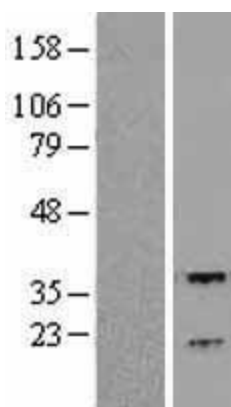
**MW:** 34.9 kDa

**Gene Summary:** This gene encodes a member of the regulator of G-protein signaling (RGS) family. This protein is a GTPase-activating protein that inhibits G-protein-mediated signal transduction. Alternative splicing and the use of alternative promoters results in multiple transcript variants encoding different isoforms. Long isoforms are largely cytosolic and plasma membrane-associated with a function in Wnt signaling and in the epithelial mesenchymal transition, while shorter N-terminally-truncated isoforms can be nuclear. [provided by RefSeq, Jan 2013]

## Product images:



Circular map for RC224204



Western blot validation of overexpression lysate (Cat# [LY403390]) using anti-DDK antibody (Cat# [TA50011-100]). Left: Cell lysates from untransfected HEK293T cells; Right: Cell lysates from HEK293T cells transfected with RC224204 using transfection reagent MegaTran 2.0 (Cat# [TT210002]).