

Product datasheet for **RC224203**

CCBE1 (NM_133459) Human Tagged ORF Clone

Product data:

Product Type:	Expression Plasmids
Product Name:	CCBE1 (NM_133459) Human Tagged ORF Clone
Tag:	Myc-DDK
Symbol:	CCBE1
Synonyms:	HKLLS1
Mammalian Cell Selection:	Neomycin
Vector:	pCMV6-Entry (PS100001)
E. coli Selection:	Kanamycin (25 ug/mL)
ORF Nucleotide Sequence:	>RC224203 representing NM_133459 Red=Cloning site Blue=ORF Green=Tags(s)

TTTTGTAATACGACTCACTATAGGGCGGCCGGAATTCGTCGACTGGATCCGGTACCGAGGAGATCTGCC
GCC**CGATCGCC**

ATGGTGCCCGCCTCCGAGCCGGGAGGAGCTGCCAGGGCCAGCTGGGCAGGAGCCTGGGTCCGCTGC
TGCTGCTCCTGGCGTTGGGACACACGTGGACCTACAGAGAGGAGCCGAGGACGGCGACAGAGAAATCTG
CTCAGAGAGCAAATCGCGACGACTAAATACCCGTGTCTGAAGTCTTCAGGCGAGCTCACCACATGCTAC
AGGAAAAAGTGTCAAAGGATATAAATTTGTTCTTGACAATGCATCCCAGAAGATTACGACGTTTGTG
CCGAGGCTCCCTGTGAACAGCAGTGCACGGACAACCTTTGGCCGAGTGTGTACTTGTATCCGGGATA
CCGATATGACCGGGAGAGACACCGGAAGCGGGAGAAGCCATACTGTCTGGATATTGATGAGTGTGCCAGC
AGCAATGGGACGCTGTGTGCCACATCTGCATCAATACCTTGGGACGCTACCGCTGCGAGTGCCGGGAAG
GCTACATCCGGGAAGATGATGGGAAGACATGTACCAGGGGAGACAAATATCCCAATGACACTGGCCATGA
GAAGTCTGAGAACATGGTGAAAGCCGAACTTGTCTGTGCCACATGCAAGGAGTTCTACCAGATGAAGCAG
ACCGTGTGCAGCTGAAGCAAAGATTGCTCTGCTCCCAACAATGCAGCTGACCTGGGCAAGTATATCA
CTGGTGACAAGGTGTGGCCTCAAACACCTACCTCCAGGACCTCCTGGCCTGCCTGGGGCCAGGGCCC
TCCCGGCTCACCAGGACCAAAGGGAAGCCAGGCTTCCCGGTATGCCAGGCCCTCCTGGCAGCCCGCC
CCACGGGGCTCAATGGGACCCATGGGACCATCTCCTGATCTGTCCACATTAAGCAAGCCGGAGGGGCC
CTGTGGGTCCACCAGGGGACCAGGAAGAGATGGTTCTAAGGGGAGAGAGGAGCCCTGGGCCAGAGG
GTCTCCAGGACCCCTGTTCTTTCGACTTCTGCTACTTATGCTGGCTGACATCCGCAATGACATCACT
GAGCTGCAGGAAAAGGTGTTCCGGCACCGGACTCACTTTCAGCAGAGGAGTTCCCTTTACCTCAGGAAT
TTCCAGCTACCCAGAAGCCATGGACCTGGGCTCTGGAGATGACCATCCAAGAAGAACTGAGACAAGAGA
CTTGAGAGCCCCAGAGACTTCTACCCA

ACGGTACGGCGCCGCTCGAGCAGAACTCATCTCAGAAGAGGATCTGGCAGCAAATGATATCTGGATT
ACAAGGATGACGACGATAAGGTTTAA



Protein Sequence: >RC224203 representing NM_133459
Red=Cloning site Green=Tags(s)

MVPPPPSRGGAARGQLGRSLGPLLLLLALGHTWYREEPEDGDREICSESKIATTKYPCLKSSGELTTCY
 RKKCKCKGYKFLGQCIPEDYDVCAEAPCEQQCTDNFGRVLCTCYPGYRDRERHRKREKPYCLDIDECAS
 SNGTLCAHICINTLGSYRCECREGYIREDGKCTRGDKYPNDTGHEKSENMMVKAGTCCATCKEFYQMKQ
 TVLQLKQKIALLPNNAADLGKYITGDKVLASNTYLPGPPGLPGGQPPGSPGPKGSPGFPMPGPPGQPG
 PRGSMGMPGSPDLSHIKQGRGPVGGAPGRDGSKGERGAPGRGSPGPPGDFLLMLADIRNDIT
 ELQEKVFGHRTHSSAEFFLPQEFPSYPEAMDLSGDDHPRRTETRDLRAPRDFYP

TRTRPLEQKLISEEDLAANDILDYKDDDDKV

Chromatograms: https://cdn.origene.com/chromatograms/mk8043_h10.zip

Restriction Sites: SgfI-MluI

Cloning Scheme:



* The last codon before the Stop codon of the ORF

ACCN: NM_133459

ORF Size: 1218 bp

OTI Disclaimer: The molecular sequence of this clone aligns with the gene accession number as a point of reference only. However, individual transcript sequences of the same gene can differ through naturally occurring variations (e.g. polymorphisms), each with its own valid existence. This clone is substantially in agreement with the reference, but a complete review of all prevailing variants is recommended prior to use. [More info](#)

OTI Annotation: This clone was engineered to express the complete ORF with an expression tag. Expression varies depending on the nature of the gene.

Components: The ORF clone is ion-exchange column purified and shipped in a 2D barcoded Matrix tube containing 10ug of transfection-ready, dried plasmid DNA (reconstitute with 100 ul of water).

Reconstitution Method:

1. Centrifuge at 5,000xg for 5min.
2. Carefully open the tube and add 100ul of sterile water to dissolve the DNA.
3. Close the tube and incubate for 10 minutes at room temperature.
4. Briefly vortex the tube and then do a quick spin (less than 5000xg) to concentrate the liquid at the bottom.
5. Store the suspended plasmid at -20°C. The DNA is stable for at least one year from date of shipping when stored at -20°C.

RefSeq: [NM_133459.4](#)

RefSeq Size: 3233 bp

RefSeq ORF: 1221 bp

Locus ID: 147372

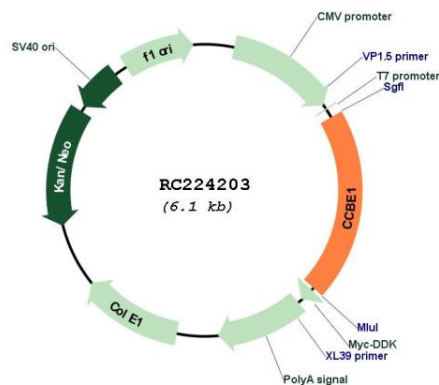
UniProt ID: [Q6UXH8](#)

Cytogenetics: 18q21.32

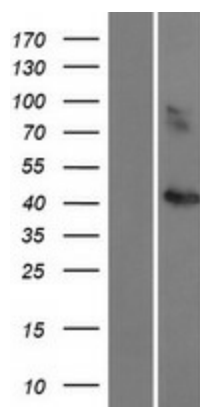
MW: 40.6 kDa

Gene Summary: This gene is thought to function in extracellular matrix remodeling and migration. It is predominantly expressed in the ovary, but down regulated in ovarian cancer cell lines and primary carcinomas, suggesting its role as a tumour suppressor. Mutations in this gene have been associated with Hennekam lymphangiectasia-lymphedema syndrome, a generalized lymphatic dysplasia in humans. [provided by RefSeq, Mar 2010]

Product images:



Circular map for RC224203



Western blot validation of overexpression lysate (Cat# [LY408797]) using anti-DDK antibody (Cat# [TA50011-100]). Left: Cell lysates from untransfected HEK293T cells; Right: Cell lysates from HEK293T cells transfected with RC224203 using transfection reagent MegaTran 2.0 (Cat# [TT210002]).