

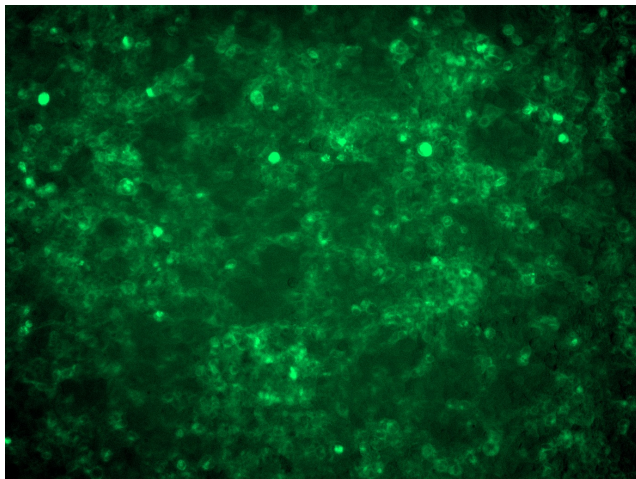
## Product datasheet for **RC224202L2V**

### **SIGLEC14 (NM\_001098612) Human Tagged ORF Clone Lentiviral Particle**

#### Product data:

Product Type:	Lentiviral Particles
Product Name:	SIGLEC14 (NM_001098612) Human Tagged ORF Clone Lentiviral Particle
Symbol:	SIGLEC14
Mammalian Cell Selection:	None
Vector:	pLenti-C-mGFP (PS100071)
Tag:	mGFP
ACCN:	NM_001098612
ORF Size:	1188 bp
ORF Nucleotide Sequence:	The ORF insert of this clone is exactly the same as(RC224202).
OTI Disclaimer:	The molecular sequence of this clone aligns with the gene accession number as a point of reference only. However, individual transcript sequences of the same gene can differ through naturally occurring variations (e.g. polymorphisms), each with its own valid existence. This clone is substantially in agreement with the reference, but a complete review of all prevailing variants is recommended prior to use. <a href="#">More info</a>
OTI Annotation:	This clone was engineered to express the complete ORF with an expression tag. Expression varies depending on the nature of the gene.
RefSeq:	<a href="#">NM_001098612.1</a>
RefSeq Size:	2113 bp
RefSeq ORF:	1191 bp
Locus ID:	100049587
UniProt ID:	<a href="#">Q08ET2</a>
Cytogenetics:	19q13.41
MW:	43.8 kDa
Gene Summary:	Putative adhesion molecule. Sialic acid-binding paired receptor which may activate associated receptors.[UniProtKB/Swiss-Prot Function]


[View online »](#)

**Product images:**

[RC224202L2] was used to prepare Lentiviral particles using [TR30037] packaging kit. HEK293T cells were transduced with RC224202L2V particle to overexpress human SIGLEC14-mGFP fusion protein.