

Product datasheet for RC224202

SIGLEC14 (NM_001098612) Human Tagged ORF Clone

Product data:

Product Type:	Expression Plasmids
Product Name:	SIGLEC14 (NM_001098612) Human Tagged ORF Clone
Tag:	Myc-DDK
Symbol:	SIGLEC14
Mammalian Cell Selection:	Neomycin
Vector:	pCMV6-Entry (PS100001)
E. coli Selection:	Kanamycin (25 ug/mL)
ORF Nucleotide Sequence:	>RC224202 representing NM_001098612 Red=Cloning site Blue=ORF Green=Tags(s)

TTTTGTAATACGACTCACTATAGGGCGGCCGGAATTCGTCGACTGGATCCGGTACCGAGGAGATCTGCC
GCC**CGATCGCC**

ATGCTGCCCTGCTGCTGCTGCCCTGCTGTGGGGGGGTCCCTGCAGGAGAAGCCAGTGTACGAGCTGC
AAGTGCAGAAGTCGGTGACGGTGACAGGAGGGCCTGTGCGTCTTGTGCCCTGCTCCTTCTTACCCCTG
GAGATCCTGGTATTCCTCTCCCCACTCTACGTCTACTGGTCCGGGACGGGAGATCCCATACTACGCT
GAGGTTGTGGCCACAAACAACCCAGACAGAAGAGTGAAGCCAGAGACCCAGGGCCGATCCGCCTCCTTG
GGGATGTCCAGAAGAAGAACTGCTCCCTGAGCATCGGAGATGCCAGAATGGAGGACACGGGAAGCTATTT
CTTCCGCGTGGAGAGAGGAAGGGATGTAATAATATAGCTACCAACAGAATAAGCTGAACTTGAGGTGACA
GCCCTGATAGAGAAACCGACATCCACTTTCTGGAGCCTCTGGAGTCCGGCCGCCACAAAGGCTGAGCT
GCAGCCTTCCAGGATCCTGTGAAGCGGGACCACCTCTCACATTCTCCTGGACGGGAATGCCCTCAGCCC
CCTGGACCCCGAGACCACCCGCTCCTCGGAGCTCACCTCACCCCGAGCCCGAGGACCATGGCACCAAC
CTCACCTGTCAGGTGAAACGCCAAGGAGCTCAGGTGACCACGGAGAGAACTGTCCAGCTCAATGTCTCCT
ATGCTCCACAGAACCTCGCCATCAGCATCTTCTCAGAAATGGCACAGGCACAGCCCTCGGATCCTGAG
CAATGGCATGTCGGTGCCATCCAGGAGGGCCAGTCCCTGTTCTCGCCTGCACAGTTGACAGCAACCCC
CCTGCCTCACTGAGCTGGTTCGGGAGGGAAAAGCCCTCAATCCTTCCAGACCTCAATGTCTGGGACCC
TGGAGCTGCCTAACATAGGAGCTAGAGAGGGAGGGGAATTCACCTGCCGGTTTCAGCATCCGCTGGGCTC
CCAGCACCTGTCTTTCATCCTTTCTGTGCAGAGAAGCTCCTTCTCCTGCATATGTGTAAGTGAACAG
CAGGGCTCCTGGCCCTCGTCTCACCTGATCAGGGGGCTCTCATGGGGCTGGCTTCTCCTCACCT
ATGGCCTCACCTGGATCTACTATACCAGGTGTGGAGGCCCCAGCAGAGCAGGGCTGAGAGGCCTGGC

ACGCGTACGCGGCCGCTCGAGCAGAACTCATCTCAGAAGAGGATCTGGCAGCAATGATATCCTGGATT
ACAAGGATGACGACGATAAGGTTTAA



[View online »](#)

Protein Sequence: >RC224202 representing NM_001098612
 Red=Cloning site Green=Tags(s)

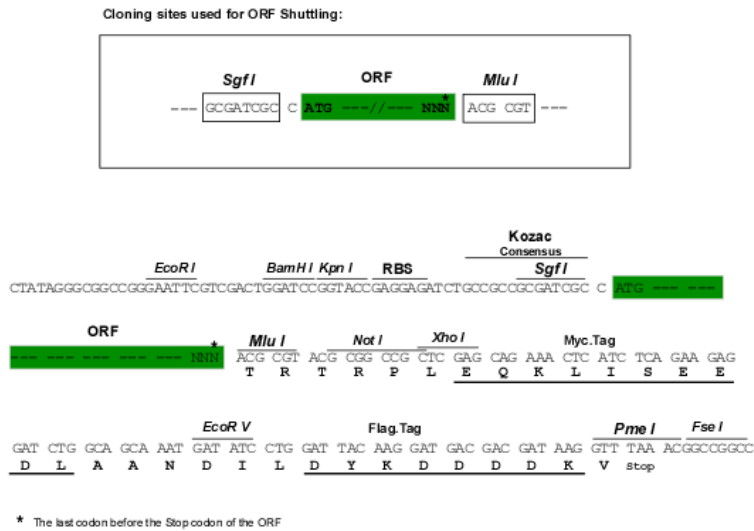
MLPLLLLPLLLWGGSLQEKPVYELQVQKSVTVQEGLCVLVPCSFSPWRSWYSSPPLYVYWFRDGEIPYYA
 EVVATNNPDRRVKPETQGRFRLLDVQKKNCSLSIGDARMEDTGSYFFRVERGRDVKYSYQKNLNEVT
 ALIEKPDIIHFLEPLESGRPTRLSCSLPGSCEAGPPLTFSWTGNALSPLDPETTRSELTLTPRPEDHGTN
 LTCQVKRQGAQVTTERTVQLNVSYPQNLAISIFFRNGTGTALRILSNGMSVPIQEGQSLFLACTVDSNP
 PASLSWFREGKALNPSQTSMSGTLELPNIGAREGGEFTCRVQHPLGSQHLSFILSVQRSSSSCICVTEKQ
 QGSWPLVLTIRGALMGAGFLLTYGLTWIYYTRCGGPQQSRAERPG

TRTRPLEQKLISEEDLAANDILDYKDDDDKV

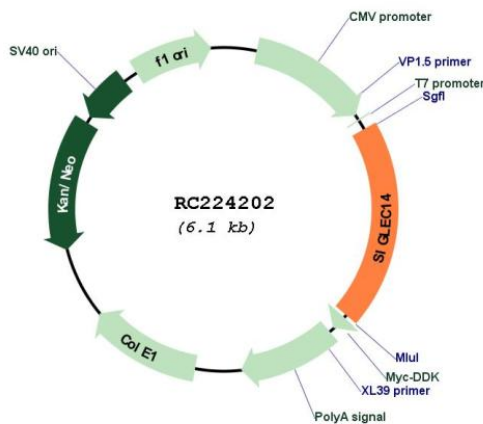
Chromatograms: https://cdn.origene.com/chromatograms/mk8005_g08.zip

Restriction Sites: SgfI-MluI

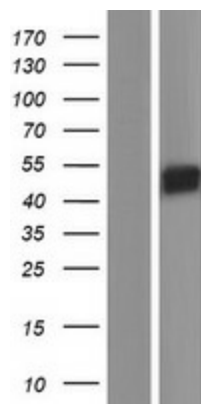
Cloning Scheme:



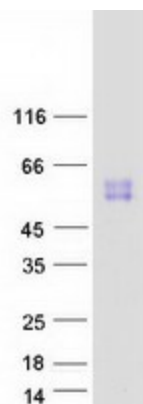
Plasmid Map:



ACCN:	NM_001098612
ORF Size:	1188 bp
OTI Disclaimer:	The molecular sequence of this clone aligns with the gene accession number as a point of reference only. However, individual transcript sequences of the same gene can differ through naturally occurring variations (e.g. polymorphisms), each with its own valid existence. This clone is substantially in agreement with the reference, but a complete review of all prevailing variants is recommended prior to use. More info
OTI Annotation:	This clone was engineered to express the complete ORF with an expression tag. Expression varies depending on the nature of the gene.
Components:	The ORF clone is ion-exchange column purified and shipped in a 2D barcoded Matrix tube containing 10ug of transfection-ready, dried plasmid DNA (reconstitute with 100 ul of water).
Reconstitution Method:	<ol style="list-style-type: none">1. Centrifuge at 5,000xg for 5min.2. Carefully open the tube and add 100ul of sterile water to dissolve the DNA.3. Close the tube and incubate for 10 minutes at room temperature.4. Briefly vortex the tube and then do a quick spin (less than 5000xg) to concentrate the liquid at the bottom.5. Store the suspended plasmid at -20°C. The DNA is stable for at least one year from date of shipping when stored at -20°C.
RefSeq:	NM_001098612.2
RefSeq Size:	2113 bp
RefSeq ORF:	1191 bp
Locus ID:	100049587
UniProt ID:	Q08ET2
Cytogenetics:	19q13.41
MW:	43.8 kDa
Gene Summary:	Putative adhesion molecule. Sialic acid-binding paired receptor which may activate associated receptors.[UniProtKB/Swiss-Prot Function]

Product images:

Western blot validation of overexpression lysate (Cat# [LY420640]) using anti-DDK antibody (Cat# [TA50011-100]). Left: Cell lysates from untransfected HEK293T cells; Right: Cell lysates from HEK293T cells transfected with RC224202 using transfection reagent MegaTran 2.0 (Cat# [TT210002]).



Coomassie blue staining of purified SIGLEC14 protein (Cat# [TP324202]). The protein was produced from HEK293T cells transfected with SIGLEC14 cDNA clone (Cat# RC224202) using MegaTran 2.0 (Cat# [TT210002]).