

## Product datasheet for **RC224198**

### PPIL2 (NM\_148175) Human Tagged ORF Clone

#### Product data:

Product Type:	Expression Plasmids
Product Name:	PPIL2 (NM_148175) Human Tagged ORF Clone
Tag:	Myc-DDK
Symbol:	PPIL2
Synonyms:	CYC4; Cyp-60; CYP60; hCyP-60; UBOX7
Vector:	pCMV6-Entry (PS100001)
E. coli Selection:	Kanamycin (25 ug/mL)
Cell Selection:	Neomycin



[View online »](#)

**ORF Nucleotide Sequence:**

>RC224198 representing NM\_148175  
 Red=Cloning site Blue=ORF Green=Tags(s)

TTTTGTAATACGACTCACTATAGGGCGGCCGGAATTCGTCGACTGGATCCGGTACCGAGGAGATCTGCC  
 GCC**CGATCGCC**

ATGGGGAAGCGACAGCACCAAAAGGACAAAATGTACATTACCTGTGCTGAATACACTCACTTTTATGGTG  
 GCAAGAAGCCAGATCTCCACAAACAAATTTTCGTCGTTTACCTTTTGACCACTGCAGTCTCTCTGCA  
 GCCTTTGTCTACCCAGTCTGCACTCCCGATGGCATCGTCTTTGACTTACTGAACATTGTTCCATGGCTT  
 AAGAAGTACGGGACCAACCCAGCAATGGAGAGAAGCTGGACGGGAGTCCCTGATCAAGCTGAACCTTTT  
 CCAAGAACAGTGAAGGGAAGTACCACTGCCAGTGTGTTACCGTGTTCACCAACAACCCACATCGT  
 GGCTGTGAGGACGACCGCAACGTCTACGCCTATGAGGCAGTGGAAACAGCTAAATATCAAGGCCAAGAAC  
 TTCGGGACCTGTGACCGACGAGCCCTTCTCCCGGCAGGACATCATACCCTCCAGGACCCCAACTT  
 TGGACAAGTTCAATGTCTCTAATTCTATCATGTGAAGAATAACATGAAAATAATAGACCCAGATGAAGA  
 GAAGGCCAAACAGGACCCGTCTTATTATCTGAAAATAACAAATGCCGAGACCCGAGAGACCTGCAGGAG  
 CTCTACAAGGAGTTCAAAGGGGACGAGATTCTGGCAGCCACCATGAAGGCCCCGGAGAAGAAGAAAGTGG  
 ACAAGCTGAACGCTGCCACTATTCCACAGGGAAGGTCAGCGCTTCTTACCTCCACCGCGATGGTCCC  
 GGAGACCACACATGAAGCAGTGCATCGACGAGGATGTGCTGCGCTACCACTTTGTGAAGAAGAAGGGC  
 TACGTGCGGTGCACACCAACAAGGGCGACCTCAACCTGGAGTGCAGTGCAGCTGACACCAAAAACCT  
 GCGAAAACCTCATCAGGCTTTGCAAGAAGCATTATTACGATGGCACCATCTTCCACAGATCCATCCGGAA  
 CTTTGTGATCAAAGGGGGCAGCCACAGGCACAGGCACGGGTGGGAGTCACTGGGGGAAGCCCTTC  
 AAAGACGAGTCCGGCCCAACCTCTCGCACACGGGCCCGGCATCCTCAGCATGGCCAACCTCCGGGCCA  
 ACAGCAACAGGTCTCAATTCTTTCATCACGTTTCGCTCCTGTGCCTACCTGGACAAGAAGCATAACCTTT  
 TGGACGGTGTGGGGGCTTTGACGTACTGACGCCATGGAGAATGTGGAGAGTGACCCCAAACTGAC  
 CGCCCTAAGGAGGAGATCCGCATTGATGCCACTACAGTGTTCGTGGACCCCTATGAGGAGCCGATGCC  
 AGATTGCGCAGGAGCGGAAGACACAGCTCAAGGTAGCCCGGAGACCAAAGTGAAGAGCAGCCAGCCCA  
 GGCAGGGAGCCAGGGCCCCAGACCTTCCGCCAGGGCGTGGCAAGTACATCAACCCAGCAGCCACGAAG  
 CGAGCAGCAGAGGAAGAGCCCTCAACCAGTGCCACTGTCCCATGTCCAAGAAGAAGCCAGTGGGGTT  
 TTGGGACTTCAGCTCTGG

**ACGCGT**ACGCGGCCGCTCGAGCAGAAACTCATCTCAGAAGAGGATCTGGCAGCAAATGATATCTGGATT  
 ACAAGGATGACGACGATAAGGTTTAA

**Protein Sequence:**

>RC224198 representing NM\_148175  
 Red=Cloning site Green=Tags(s)

MGKRQHQQDKMYITCAEYTHFYGGKKPDLPQTNFRRLPFDHCSLSLQPFVYVPCTPDGIVFDLLNIVPWL  
 KKYGTNPSNGEKLDGRSLIKLNF SKNSEGKYHCPVLFVFTNNTIHVAVRTTGNVYAYEAVEQLNIKAKN  
 FRDLLTDEPFSRQDIITLQDPTNLDKFNVSNFYHVKNMNIIDPDEEKAKQDPSYLLKNTNAETRETLQE  
 LYKEFKGDEILAAATMKAPEKKKVDKLNAAHYSTGKVSASFSTAMVPETTHEAAAIDEDVLRYPVKKKG  
 YVRLHTNKGDLNLELHCDLTPKTCENFIRLCKKHYYDGTIFHRSIRNFVIQGGDPTGTGGESYWGKPF  
 KDEFRPNLSHTGRGILSMANSGPNSNRSQFFITFRSCAYLDDKHTIFGRVVGDFDLTAMENVESDPKTD  
 RPKEEIRIDATTVFVDPYEEADAQIAQERKTQLKVAPETKVKSSQPQAGSQPQTFRQGVGKYINPAATK  
 RAAEEEPSTSATVPMSKKKPSRFGDFSSW

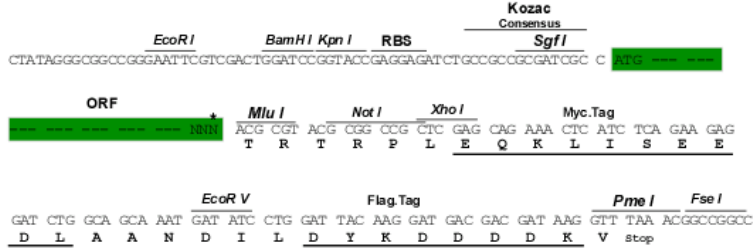
**TR**TRPLEQKLISEEDLAANDILDYKDDDDKV

**Restriction Sites:**

Sgfl-Mlul

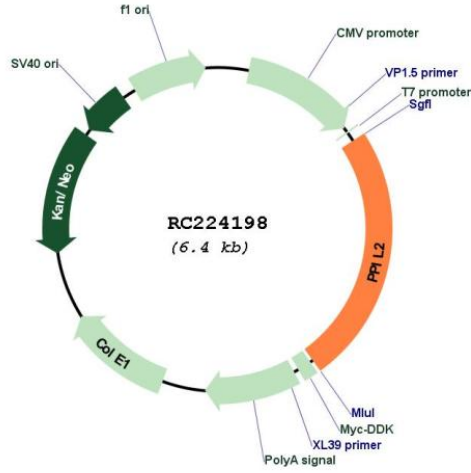
Cloning Scheme:

Cloning sites used for ORF Shutting:



\* The last codon before the Stop codon of the ORF

Plasmid Map:



<b>ACCN:</b>	NM_148175
<b>ORF Size:</b>	1560 bp
<b>OTI Disclaimer:</b>	The molecular sequence of this clone aligns with the gene accession number as a point of reference only. However, individual transcript sequences of the same gene can differ through naturally occurring variations (e.g. polymorphisms), each with its own valid existence. This clone is substantially in agreement with the reference, but a complete review of all prevailing variants is recommended prior to use. <a href="#">More info</a>
<b>OTI Annotation:</b>	This clone was engineered to express the complete ORF with an expression tag. Expression varies depending on the nature of the gene.
<b>Components:</b>	The ORF clone is ion-exchange column purified and shipped in a 2D barcoded Matrix tube containing 10ug of transfection-ready, dried plasmid DNA (reconstitute with 100 ul of water).
<b>Reconstitution Method:</b>	<ol style="list-style-type: none"><li>1. Centrifuge at 5,000xg for 5min.</li><li>2. Carefully open the tube and add 100ul of sterile water to dissolve the DNA.</li><li>3. Close the tube and incubate for 10 minutes at room temperature.</li><li>4. Briefly vortex the tube and then do a quick spin (less than 5000xg) to concentrate the liquid at the bottom.</li><li>5. Store the suspended plasmid at -20°C. The DNA is stable for at least one year from date of shipping when stored at -20°C.</li></ol>
<b>RefSeq:</b>	<a href="#">NM_148175.3</a>
<b>RefSeq Size:</b>	2878 bp
<b>RefSeq ORF:</b>	1563 bp
<b>Locus ID:</b>	23759
<b>UniProt ID:</b>	<a href="#">Q13356</a>
<b>Cytogenetics:</b>	22q11.21
<b>Protein Families:</b>	Druggable Genome
<b>Protein Pathways:</b>	Ubiquitin mediated proteolysis
<b>MW:</b>	58.8 kDa
<b>Gene Summary:</b>	This gene is a member of the cyclophilin family of peptidylprolyl isomerases. The cyclophilins are a highly conserved ubiquitous family, members of which play an important role in protein folding, immunosuppression by cyclosporin A, and infection of HIV-1 virions. This protein interacts with the proteinase inhibitor eglin c and is localized in the nucleus. Alternatively spliced transcript variants have been found for this gene. [provided by RefSeq, Dec 2015]