

Product datasheet for **RC224192**

POU6F2 (NM_007252) Human Tagged ORF Clone

Product data:

Product Type:	Expression Plasmids
Product Name:	POU6F2 (NM_007252) Human Tagged ORF Clone
Tag:	Myc-DDK
Symbol:	POU6F2
Synonyms:	RPF-1; WT5; WTSL
Mammalian Cell Selection:	Neomycin
Vector:	pCMV6-Entry (PS100001)
E. coli Selection:	Kanamycin (25 ug/mL)



[View online »](#)

ORF Nucleotide
Sequence:

>RC224192 representing NM_007252
Red=Cloning site Blue=ORF Green=Tags(s)

TTTTGTAATACGACTCACTATAGGGCGGCCGGAATTCGTGACTGGATCCGGTACCGAGGAGATCTGCC
GCCGCGATCGCC

ATGAGTGTCTTCTTTCAGGATCCAATGATAGCTGGACAAGTCAGTAAGCCCTTGCTGTCACTGCGGAGTG
AAATGAATGCGGAGTTGAGAGGTGAGGACAAGGCTGCTACTTCAGACAGCGAGCTGAATGAGCCCCGCT
TGCGCCTGTGGAATCAAATGACAGCGAGGACACTCCCAGCAAGCTCTTCGGGGCTAGAGGAAACCCAGCA
TTATCAGACCCAGGCACTCCTGACCAACACCAGGCCAGTCAGACCCACCCCATTTCCAGTTGGGCCAC
AGCCACTTCTGACGGCACAGCAGTTAGCTTCTGCTGTGGCCGGCGTGATGCCGGGAGGCCCCAGCCCT
CAACCAGCCAATCCTCATTCCCTTCAACATGGCGGGACAGCTAGGAGGCCAGCAAGGACTGGTTCTCACA
CTGCCAACAGCGAATCTACCAACATCCAAGGGCTGGTGGCAGCAGCTGCAGCCGGAGGCATTATGACTC
TGCCACTGCAAAATCTACAAGCTACCTCATCCCTGAACCTCCAGCTCCAGCAGCTCCAGCTCCAGCTCCA
GCAGCAGCAGCAGCAGCAGCAGCAGCAGCTCCCCGTAACCAACCAGCACCCGCAACCAGCCCCACAG
GCGCCCTCGCAGTCCCAGCAGCAGCCGCTGCAGCCCACCCACCCAGCAGCCACCACCCGCTCTCAGC
AGCCGCCAGCTCCTACATCTCAGCTGCAACAGGCGCTCAGCCCCAGCAGCACCAACCCCACTCCCCTC
CCAGAACCAGAACCAACCATCTCCAACCCAGCAGAGCTCCAGCCCCCGAGAAACCTAGTCAGTCTCCA
GGCATGGCCTGCCTTACCCTCACGCCACCCAACTCCTTACAGCTGGTTAATAATCCACTAGCAAATGTC
AGGCTGCAGCGGCTGCAGCAGCCATGAGCTCCATAGCAAGCTCACAGGCCCTTGGCAATGCCCTCTCCAG
TCTTACAGGGGTACAGGTCAACTAGTTACTAATGCACAAGGACAGATTATCGGGACCTTCCACTGATG
CCTAATCCAGGGCCATCGAGCCAAGCAGCAAGCGGCACTCAGGGCTTGAAGTGCAGCCAATCACCCCC
AGCTCCTCACAACGCCAGGGCCAGATCATCGCCACAGTCATTGGGAACCAGATCCTGCCGTGATCAA
CACCCAGGGCATCAGCTGTCAACCATCAAGCCCGGCCAGCAGCTCCACCAACCCCTCCAGACGTCAAGT
GGTCAAGCAGCCTCCCAAGGCAACCTTCTGCACCTGGCTCACAGCCAAGCATCCATGTCTCAAAGTCCCG
TCCGGCAGGCTTCTTCTTCTCCTCATCCTCCTTCTTCTTCTTCTTCTTCTTCTTCTTCTTCTTCTTCTTCT
CAATCCTCAAACGGCAGCGGGTGAAGTGGATGGGGTAACTGGAGGAGATCCGAGAATTTGCCAAAGCT
TTTAAATCCGGCGCCTGTCCCTTGGCCTGACCCAGACTCAGGTGGGACAGGCTCTCAGTGTACAGAGG
GCCCGCGTACAGCCAGTCGGCCATCTGCAGACACACCCTCTGAGAAGCCACTTTTCTACCACAGGA
AGCCCAAGAGAACAATAGCTAGCAGTCTGACAGCCAACTGAACCCTGGCCTTTGTATCCTGCCAGG
TTTGAAAAGCTGGACATACCCCTAAAAGTGCCAGAAGATCAAGCCGGTCTTGAGCGGTGGATGGCTG
AGGCTGAGGCCCGCCATCGAGCAGGTATGCAGAACCTGACCGAGTTTATCGGGAGTGAACCATCCAAAA
GCGCAAGCGGCGCACCTCCTTACACCCAGGCCCTTGAGATCCTCAATGCCCACTTTGAGAAGAACACA
CACCTTCTGGGCAGGAAATGACCGAAATTGCTGAGAAGCTGAATATGACCGAGAAGTAGTTAGAGTTT
GGTTCTGCAATAAGAGGCAAGCCCTGAAGAACAATTAACGCTTAAAACAGCAGCAGCCGGCCACGGC
AGTCCCTTGGAGCCCTAACAGACTCTCTGGAAGAAACTCC

ACGCGTACGCGGCCGCTCGAGCAGAACTCATCTCAGAAGAGGATCTGGCAGCAATGATATCCTGGATT
ACAAGGATGACGACGATAAGGTTTAA

Protein Sequence: >RC224192 representing NM_007252
 Red=Cloning site Green=Tags(s)

MSALLQDPMIAGQVSKPLL SVRSEMNAELRGEDKAATSDSELNEPLLAPVESNDS EDTPSKLF GARGNPA
 LSDPGTPDQH QASQTHPPFPVGPQPLLTAQQLASAVAGVMPGGPPALNQPILIPFNMAQQLGGQQGLVLT
 LPTANL TNIQGLVAAAAAGGIMTLPLQNLQATSSLNSQLQQLQLQLQQQQQQQQPPSTNQHPQPAPQ
 APSQSQQQLPQTTPPQQPPASQPPAPTSQLQQAPQPQHQPHSHSQNQNPSPPTQQSSPPQKPSQSP
 GHGLPSPLTPPNPLQLVNNPLASQAAAAAAMSSIASQAFGNALSSLQGVGTGQLVTNAQQQIIGTIPLM
 PNPGPSQAASGTQGLQVQIPITPQLLTNAQQQIIATVIGNQILPVINTQGITLSPKPGQQLHQPSQTSV
 GQAASQGNLLHLAHSQASMSQSPVRQASSSSSSSSSSALSVGQLVSNPQTAAGEVDGVNLEEIREFAKA
 FKIRRLSLGLTQTQVGQAL SATEGPAYSAICRHTILRSHFLLPQEAQENTIASSLTAKLNPGLLYPAR
 FEKLDITPKSAQKIKPVLERWMAEAEARHRAGMQNLTEFIGSEPSKRRKRRTSFTPQALEILNAHFENKNT
 HPSGQEMTEIAEKLNYDREVVVWF CNKRQALKNTIKRLKQHEPATAVPLEPLTDSLEENS

TRTRPLEQKLISEEDLAANDILDYKDDDDKV

Restriction Sites:

SgfI-MluI

Cloning Scheme:



ACCN: NM_007252

ORF Size: 2073 bp

OTI Disclaimer: Due to the inherent nature of this plasmid, standard methods to replicate additional amounts of DNA in E. coli are highly likely to result in mutations and/or rearrangements. Therefore, OriGene does not guarantee the capability to replicate this plasmid DNA. Additional amounts of DNA can be purchased from OriGene with batch-specific, full-sequence verification at a reduced cost. Please contact our customer care team at custsupport@origene.com or by calling 301.340.3188 option 3 for pricing and delivery.

The molecular sequence of this clone aligns with the gene accession number as a point of reference only. However, individual transcript sequences of the same gene can differ through naturally occurring variations (e.g. polymorphisms), each with its own valid existence. This clone is substantially in agreement with the reference, but a complete review of all prevailing variants is recommended prior to use. [More info](#)

OTI Annotation: This clone was engineered to express the complete ORF with an expression tag. Expression varies depending on the nature of the gene.

Components: The ORF clone is ion-exchange column purified and shipped in a 2D barcoded Matrix tube containing 10ug of transfection-ready, dried plasmid DNA (reconstitute with 100 ul of water).

Reconstitution Method:

1. Centrifuge at 5,000xg for 5min.
2. Carefully open the tube and add 100ul of sterile water to dissolve the DNA.
3. Close the tube and incubate for 10 minutes at room temperature.
4. Briefly vortex the tube and then do a quick spin (less than 5000xg) to concentrate the liquid at the bottom.
5. Store the suspended plasmid at -20°C. The DNA is stable for at least one year from date of shipping when stored at -20°C.

RefSeq: [NM_007252.4](#)

RefSeq Size: 2324 bp

RefSeq ORF: 2076 bp

Locus ID: 11281

UniProt ID: [P78424](#)

Cytogenetics: 7p14.1

Domains: POU, homeobox

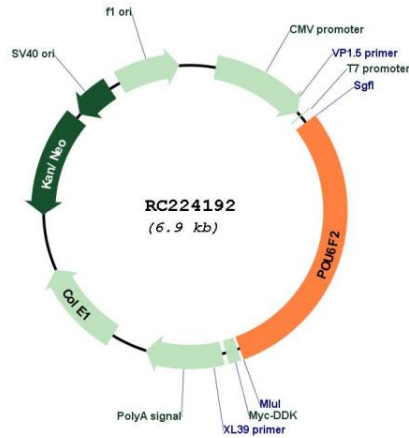
Protein Families: Transcription Factors

MW: 73.3 kDa

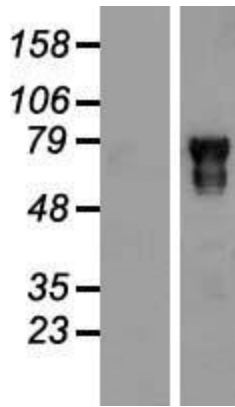
Gene Summary:

This gene encodes a member of the POU protein family characterized by the presence of a bipartite DNA binding domain, consisting of a POU-specific domain and a homeodomain, separated by a variable polylinker. The DNA binding domain may bind to DNA as monomers or as homo- and/or heterodimers, in a sequence-specific manner. The POU family members are transcriptional regulators, many of which are known to control cell type-specific differentiation pathways. This gene is a tumor suppressor involved in Wilms tumor (WT) predisposition. Alternatively spliced transcript variants encoding distinct isoforms have been found for this gene.[provided by RefSeq, Oct 2009]

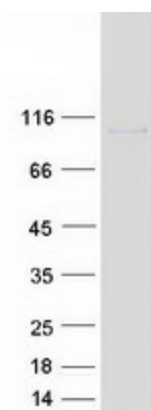
Product images:



Circular map for RC224192



Western blot validation of overexpression lysate (Cat# [LY416091]) using anti-DDK antibody (Cat# [TA50011-100]). Left: Cell lysates from untransfected HEK293T cells; Right: Cell lysates from HEK293T cells transfected with RC224192 using transfection reagent MegaTran 2.0 (Cat# [TT210002]).



Coomassie blue staining of purified POU6F2 protein (Cat# [TP324192]). The protein was produced from HEK293T cells transfected with POU6F2 cDNA clone (Cat# RC224192) using MegaTran 2.0 (Cat# [TT210002]).