

## Product datasheet for RC224190

### DIABLO (NM\_138929) Human Tagged ORF Clone

#### Product data:

**Product Type:** Expression Plasmids  
**Product Name:** DIABLO (NM\_138929) Human Tagged ORF Clone  
**Tag:** Myc-DDK  
**Symbol:** DIABLO  
**Synonyms:** DFNA64; DIABLO-S; SMAC; SMAC3  
**Vector:** pCMV6-Entry (PS100001)  
**E. coli Selection:** Kanamycin (25 ug/mL)  
**Cell Selection:** Neomycin  
**ORF Nucleotide Sequence:** >RC224190 representing NM\_138929  
Red=Cloning site Blue=ORF Green=Tags(s)

TTTTGTAATACGACTCACTATAGGGCGCCGGAATTCGTCGACTGGATCCGGTACCGAGGAGATCTGCC  
GCC**GCGATCGCC**

ATGGCGGCTCTGAAGAGTTGGCTGTCGCGCAGCGTAATTCATTCTTCAGGTACAGACAGTGTGGTGTG  
TTCTGTTGGCTAACTTAAGAAGCGGTGTTTCTCAGAATTGATAAGACCATGGCACAAAACCTGTGAC  
GATTGGCTTTGGAGTAACCTGTGTGCGGTTCTATTGCACAGGCTGTTTATACCTTAACCTCTCTTTAC  
CGACAATATAAGTTTACTTGGGAAAATGAATTCAGAGGAGGAAGATGAAGTGTGGCAGGTGATCATAG  
GAGCCAGAGCTGAGATGACTTCAAACACCAAGAGTACTTGAAGCTGGAACCACTTGGATGACTGCAGT  
TGGTCTTTAGAGATGGCAGCAGAAGCTGCATATCAAACCTGGCGCAGATCAGGCCTCTATAACCGCCAGG  
AATCACATTCAGCTGGTAAACTGCAGGTGGAAGAGGTGCACCAGCTCTCCCGAAAGCAGAAACCAAGC  
TGGCAGAAGCACAGATAGAAGAGCTCCGTCAGAAAACACAGGAGGAAGGGGAGGAGCGGGCTGAGTCGGA  
GCAGGAGGCCTACCTGCGTGAGGAT

**ACGCGT**ACGCGGCGCTCGAGCAGAAACTCATCTCAGAAGAGGATCTGGCAGCAAATGATATCCTGGATT  
ACAAGGATGACGACGATAAGGTTTAA

**Protein Sequence:** >RC224190 representing NM\_138929  
Red=Cloning site Green=Tags(s)

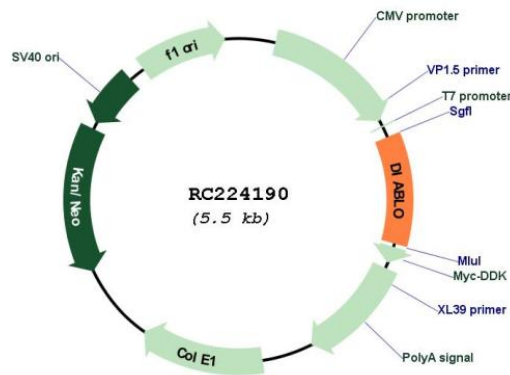
MAALKSWLSRSVTSFFRYRQCLCVPVVFANFKKRCFSELIRPWHKTVTIGFVTLCAVPIAQAVYTLTSLY  
RQYTSLLGKMNSEEEDEVWQVIIGARAEMTSKHQEYLLKLETTWMTAVGLSEMAEAAAYQTGADQASITAR  
NHIQLVKLQVEEVHQLSRKAETKLAEAQIEELRQKTQEEGEERAESEQEAYLRED

**TR**TRPLEQKLISEEDLAANDILDYKDDDDKV

**Restriction Sites:** SgfI-MluI



**Cloning Scheme:**

**Plasmid Map:**


**ACCN:** NM\_138929

**ORF Size:** 585 bp

**OTI Disclaimer:** The molecular sequence of this clone aligns with the gene accession number as a point of reference only. However, individual transcript sequences of the same gene can differ through naturally occurring variations (e.g. polymorphisms), each with its own valid existence. This clone is substantially in agreement with the reference, but a complete review of all prevailing variants is recommended prior to use. [More info](#)

**OTI Annotation:** This clone was engineered to express the complete ORF with an expression tag. Expression varies depending on the nature of the gene.

**Components:** The ORF clone is ion-exchange column purified and shipped in a 2D barcoded Matrix tube containing 10ug of transfection-ready, dried plasmid DNA (reconstitute with 100 ul of water).

**Reconstitution Method:**

1. Centrifuge at 5,000xg for 5min.
2. Carefully open the tube and add 100ul of sterile water to dissolve the DNA.
3. Close the tube and incubate for 10 minutes at room temperature.
4. Briefly vortex the tube and then do a quick spin (less than 5000xg) to concentrate the liquid at the bottom.
5. Store the suspended plasmid at -20°C. The DNA is stable for at least one year from date of shipping when stored at -20°C.

**RefSeq:** [NM\\_138929.3](#)

**RefSeq Size:** 1366 bp

**RefSeq ORF:** 587 bp

**Locus ID:** 56616

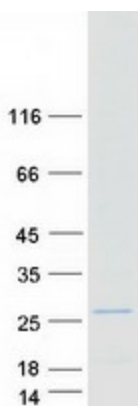
**Cytogenetics:** 12q24.31

**Protein Families:** Transmembrane

**MW:** 15.9 kDa

**Gene Summary:** This gene encodes an inhibitor of apoptosis protein (IAP)-binding protein. The encoded mitochondrial protein enters the cytosol when cells undergo apoptosis, and allows activation of caspases by binding to inhibitor of apoptosis proteins. Overexpression of the encoded protein sensitizes tumor cells to apoptosis. A mutation in this gene is associated with young-adult onset of nonsyndromic deafness-64. Alternative splicing results in multiple transcript variants encoding different isoforms. [provided by RefSeq, May 2013]

## Product images:



Coomassie blue staining of purified DIABLO protein (Cat# [TP324190]). The protein was produced from HEK293T cells transfected with DIABLO cDNA clone (Cat# RC224190) using MegaTran 2.0 (Cat# [TT210002]).