

## Product datasheet for **RC224184**

### **C6ORF182 (CEP57L1) (NM\_001083535) Human Tagged ORF Clone**

#### **Product data:**

|                           |  |
|---------------------------|--|
| Product Type:             | Expression Plasmids                                      |
| Product Name:             | C6ORF182 (CEP57L1) (NM_001083535) Human Tagged ORF Clone |
| Tag:                      | Myc-DDK  |
| Symbol:                   | C6ORF182   |
| Synonyms:                 | bA487F23.2; C6orf182; cep57R                             |
| Mammalian Cell Selection: | Neomycin   |
| Vector:                   | pCMV6-Entry (PS100001)                                   |
| E. coli Selection:        | Kanamycin (25 ug/mL)                                     |



[View online »](#)

**ORF Nucleotide Sequence:**

>RC224184 ORF sequence  
 Red=Cloning site Blue=ORF Green=Tags(s)

TTTTGTAATACGACTCACTATAGGGCGGCCGGAATTCGTCGACTGGATCCGGTACCGAGGAGATCTGCC  
 GCC**CGCATCGCC**

ATGGATTCTGAATTAATGCATAGTATAGTAGGAAGCTATCATAAACCTCCAGAAAGAGTATTTGTTCCCT  
 CATTACCCAGAATGAACCATCTCAGAATTGCCATCCTGCAAACCTAGAAGTTACCTCTCCTAAGATACT  
 TCATAGCCCAAATAGCCAAGCTCTTATTTTAGCCTTAAAACTCTTCAGGAAAAAATTCATCGTTTAGAG  
 CTGGAGAGAACAAGCTGAAGATAACCTGAACATTCTTTCCAGAGAAGCAGCACAGTATAAGAAGGCCT  
 TAGAGAATGAAACAAATGAGAGAAATCTGGCACACCAGGAGCTGATAAAGCAGAAAAAGATATAAGTAT  
 ACAGTTAAGCTCAGCCCAGTCTCGTTGTACTCTTCTAGAGAAGCAACTAGAATATACAAAGAGAATGGTT  
 CTCACGTAGAGCGAGAAAAAAGACATGATCCTAGAACAACAGGCCAGCTTCAGAGGGAAAAAGAACAAG  
 ATCAGATGAAGCTGTATGCAAACTTGAAGCTTGATGTCTTAGAAAAAGAGTGTTCAGACTTACAAC  
 AACTCAGAAAACCTGCTGAGGACAAGATTAACATTTAGAAGAAAACTTAAAGGAAGAAGAACATCAGCGT  
 AAGCTATTTCAAGACAAAGCTTCTGAGCTTCAAACCTGGACTTGAAATCAGTAAAAATTATAATGTCTTCAG  
 TTTCAAATCTAAAGCACTCCAAGGAAAAAGAAGAAATCTTCAAAGAAAACTAAATGTATAAAGAGACGACC  
 ACCTTGGCAAATTTGTTCAAAGTTTGGAGCACTGCCTTTTGTGGCTGAAAAGATGAGGCAACATCGTGAC  
 CCACATATCCTTCAGAAACCTTTAACGTGACTGAGACTAGATGTCTCCCAAGCCTTCTAGAACAACCT  
 CCTGGTGTAAAGCTATTCCTCCTGACTCAGAAAAGTCCATTTCCATTTGTGACAATTTATCTGAACCTTT  
 GATGGCAATGCAAGATGAGCTGGACCAATGAGCATGGAGCACCAGAAGTACTGAAACAAATGAAGGAA  
 ACTGAAAGTCATTCACTGTGACGACATAGAATGTGAAGTACTGAAAGTACTGAAAGTACTGAAAGTACTGAAAGT  
 AAGGAGAACAAATCTCCAACTGAAGAAGCATCAAGACAGTGTCTGTAAGTGCAGCAAAAGTTCAAAA  
 CTCAAAGATGAGTGAAGCTTCAGGTATTCAGCAAGAAGACAGCTACCCTAAAGGATCAAAGAACATAAAA  
 AATAGCCCGAGAAATGTTTACTGACTACTAACCTTTTTCAGAAAAACAGCAGCTTTCATCCAATACGAG  
 TTCATAATCTTCAAATGAAATTGAGAAGAGATGATATCATGTGGGAACAG

**ACGCGT**ACGCGGCCGCTCGAGCAGAACTCATCTCAGAAGAGGATCTGGCAGCAAATGATATCCTGGATT  
 ACAAGGATGACGACGATAAGGTTTAA

**Protein Sequence:**

>RC224184 protein sequence  
 Red=Cloning site Green=Tags(s)

MSELMSIVGSYHKPPERVFVPSFTQNEPSQNCHPANLEVTSPKILHSPNSQALILALKTLQEKIHRLE  
 LERTQAEDNLNILSREAAQYKALENETNERNLAHQELIKQKDISIQLSSAQSRTLLLEKQLEYTKRMV  
 LNVEREKNMILEQQAQLQREKEQDMKLYAKLEKLDVLEKECFRLTTTQKTAEDKIKHLEEKLEEEHQR  
 KLFQDKASELQTGLEISKIIMSSVSNLKHSEKKSSTKTKIKRRPPWQICSKFGALPFVAEKMRQHRD  
 PHILQKPFNVTETRCLPKPSRTTSWCKAIPDSEKISISIDNLSSELLMAMQDELDMQSMHEQELLKQMK  
 TESHVCDIECELECLLKKMEIKGEQISLKKHQDSVCKLQKQVQNSKMSEASGIQQEDSYPKGSKNIK  
 NSPRKCLTDTNLFQKNSSFPIRVHNLQMKLRRDDIMWEQ

**TR**TRPLEQKLISEEDLAANDILDYKDDDDKV

**Chromatograms:**

[https://cdn.origene.com/chromatograms/mk6725\\_d08.zip](https://cdn.origene.com/chromatograms/mk6725_d08.zip)

**Restriction Sites:**

Sgfl-MluI

**Cloning Scheme:**


**ACCN:** NM\_001083535

**ORF Size:** 1380 bp

**OTI Disclaimer:** The molecular sequence of this clone aligns with the gene accession number as a point of reference only. However, individual transcript sequences of the same gene can differ through naturally occurring variations (e.g. polymorphisms), each with its own valid existence. This clone is substantially in agreement with the reference, but a complete review of all prevailing variants is recommended prior to use. [More info](#)

**OTI Annotation:** This clone was engineered to express the complete ORF with an expression tag. Expression varies depending on the nature of the gene.

**Components:** The ORF clone is ion-exchange column purified and shipped in a 2D barcoded Matrix tube containing 10ug of transfection-ready, dried plasmid DNA (reconstitute with 100 ul of water).

- Reconstitution Method:**
1. Centrifuge at 5,000xg for 5min.
  2. Carefully open the tube and add 100ul of sterile water to dissolve the DNA.
  3. Close the tube and incubate for 10 minutes at room temperature.
  4. Briefly vortex the tube and then do a quick spin (less than 5000xg) to concentrate the liquid at the bottom.
  5. Store the suspended plasmid at -20°C. The DNA is stable for at least one year from date of shipping when stored at -20°C.

**RefSeq:** [NM\\_001083535.3](#)

**RefSeq Size:** 2915 bp

**RefSeq ORF:** 1383 bp

**Locus ID:** 285753

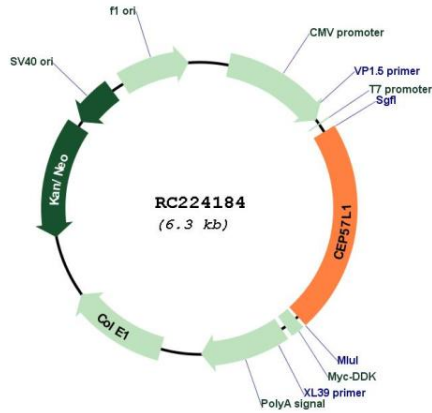
**UniProt ID:** [Q8IYX8](#)

**Cytogenetics:** 6q21

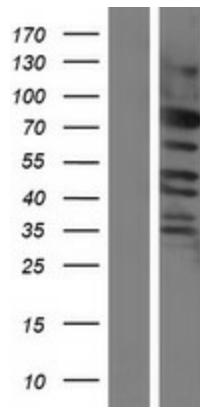
**MW:** 53.6 kDa

**Gene Summary:** Centrosomal protein which may be required for microtubule attachment to centrosomes. [UniProtKB/Swiss-Prot Function]

**Product images:**



Circular map for RC224184



Western blot validation of overexpression lysate (Cat# [LY421215]) using anti-DDK antibody (Cat# [TA50011-100]). Left: Cell lysates from untransfected HEK293T cells; Right: Cell lysates from HEK293T cells transfected with RC224184 using transfection reagent MegaTran 2.0 (Cat# [TT210002]).